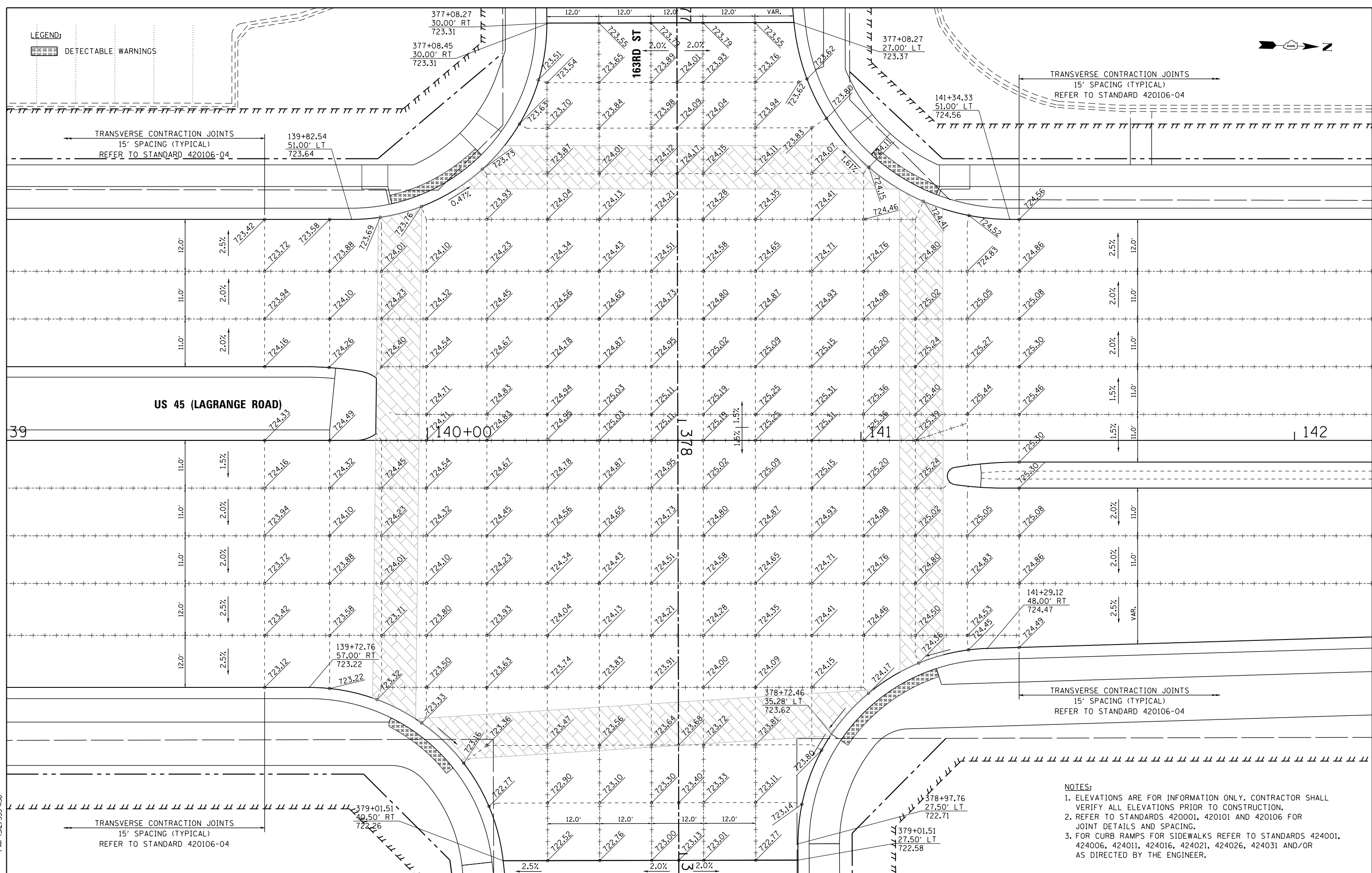
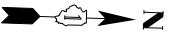


LEGEND:
 DETECTABLE WARNINGS



TRANSVERSE CONTRACTION JOINTS
 15' SPACING (TYPICAL)
 REFER TO STANDARD 420106-04

TRANSVERSE CONTRACTION JOINTS
 15' SPACING (TYPICAL)
 REFER TO STANDARD 420106-04

TRANSVERSE CONTRACTION JOINTS
 15' SPACING (TYPICAL)
 REFER TO STANDARD 420106-04

TRANSVERSE CONTRACTION JOINTS
 15' SPACING (TYPICAL)
 REFER TO STANDARD 420106-04

- NOTES:
1. ELEVATIONS ARE FOR INFORMATION ONLY. CONTRACTOR SHALL VERIFY ALL ELEVATIONS PRIOR TO CONSTRUCTION.
 2. REFER TO STANDARDS 420001, 420101 AND 420106 FOR JOINT DETAILS AND SPACING.
 3. FOR CURB RAMP FOR SIDEWALKS REFER TO STANDARDS 424001, 424006, 424011, 424016, 424021, 424026, 424031 AND/OR AS DIRECTED BY THE ENGINEER.

100 S. WACKER DR.
 SUITE 600
 CHICAGO, IL 60606
 TEL (312) 939-1000
 FAX (312) 939-4998
URS

FILE NAME = D160F05-SHT-PAVEMENT-DETAILS06.dgn	USER NAME = Frank.Stallone	DESIGNED - JTF	REVISED -
		DRAWN - JTF	REVISED -
		CHECKED - MJT	REVISED -
SHT.PLAN	PLOT DATE = 3/13/2013	DATE - 03/13/13	REVISED -

**STATE OF ILLINOIS
 DEPARTMENT OF TRANSPORTATION**

**INTERSECTION DETAILS
 US 45 (LAGRANGE ROAD) AND 163RD STREET**

SCALE: 1"=10' SHEET 6 OF 8 SHEETS STA. TO STA.

F.A.P. RTE. 330	SECTION 103R-3	COUNTY COOK	TOTAL SHEETS 932	SHEET NO. 412
PD-06			CONTRACT NO. 60F05	
ILLINOIS FED. AID PROJECT				