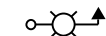
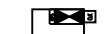

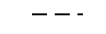
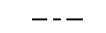
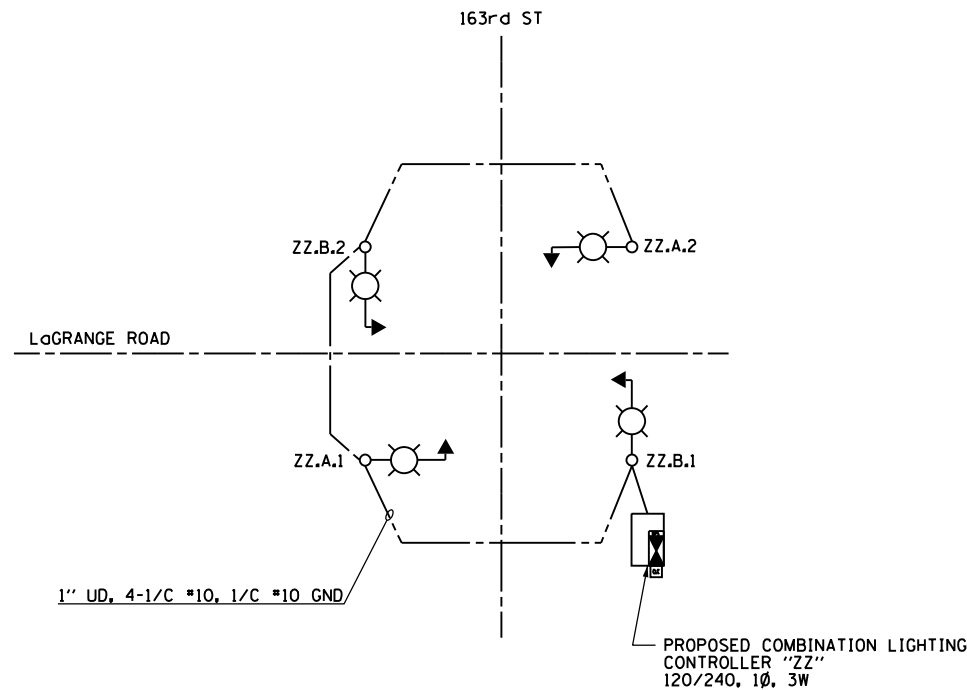


**LEGEND:**

-  PROPOSED COMBINATION POLE LIGHTING UNIT; 400W, 240V PHASE TO PHASE, HPS LUMINAIRE WITH TYPE III DISTRIBUTION, INSTALLED ON 12'-0" MAST ARM AT 45'-0" MOUNTING HEIGHT. POLE AND FOUNDATION SUPPLIED BY THE TRAFFIC SIGNAL CONTRACTOR, WITH 5A FUSES
-  PROPOSED COMBINATION LIGHTING CONTROLLER
-  PROPOSED COMED PAD-MOUNTED TRANSFORMER FOR UTILITY SERVICE CONNECTION
-  PROPOSED CONDUIT AND CABLE AS IDENTIFIED TO SECONDARY SIDE OF UTILITY SERVICE CONNECTION
-  PROPOSED UNIT DUCT; SIZE AND QUANTITY OF CONDUCTORS AS IDENTIFIED

**NOTES:**

1. SEE DRAWING E-1 FOR ELECTRICAL ABBREVIATIONS. SEE DRAWING E-2 FOR ELECTRICAL GENERAL NOTES.
2. COLOR CODING OF CONDUCTORS FOR 240/480V, 1Ø, 3W LIGHTING SYSTEM IS AS FOLLOWS:  
 "A" PHASE - RED  
 "B" PHASE - BLACK  
 NEUTRAL - WHITE  
 GROUND - GREEN
3. COLOR CODING OF CONDUCTORS FOR 120/240V, 1Ø, 3W RECEPTACLE SYSTEM IS AS FOLLOWS:  
 "A" PHASE - ORANGE  
 "B" PHASE - BROWN  
 NEUTRAL - GRAY  
 GROUND - GREEN



**PROPOSED COMBO TRAFFIC/LIGHTING CONTROLLER  
 "ZZ" WIRING DIAGRAM  
 N.T.S.**

COMBO TRAFFIC/LIGHTING CONTROLLER "ZZ" ROADWAY LIGHTING PANEL LOAD TABLE					
CIRCUIT			CIRCUIT		
	AMPS	WATTS		AMPS	WATTS
A	4	960	B	4	960
C	--	--	D	--	--
TOTAL	4.0	960	TOTAL	4.0	960

LOAD TABULATION IS BASED ON THE FOLLOWING:  
 400W HPS LUMINAIRE: 2.0A AT 240V (PHASE TO PHASE)