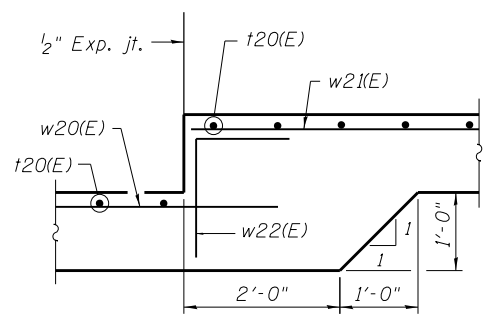


ELEVATION
(Looking West at F.F. of Wall)

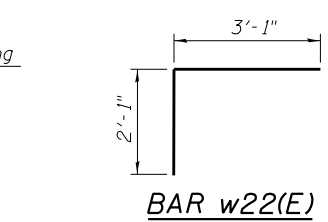
A DIMENSION

Bar	A
v20(E)	10'-8"
v21(E)	9'-3"
v22(E)	8'-8"
v23(E)	10'-5"
v24(E)	9'-1"

BARS v20(E), v21(E), v22(E), v23(E) & v24(E)



DETAIL 1



BAR w22(E)

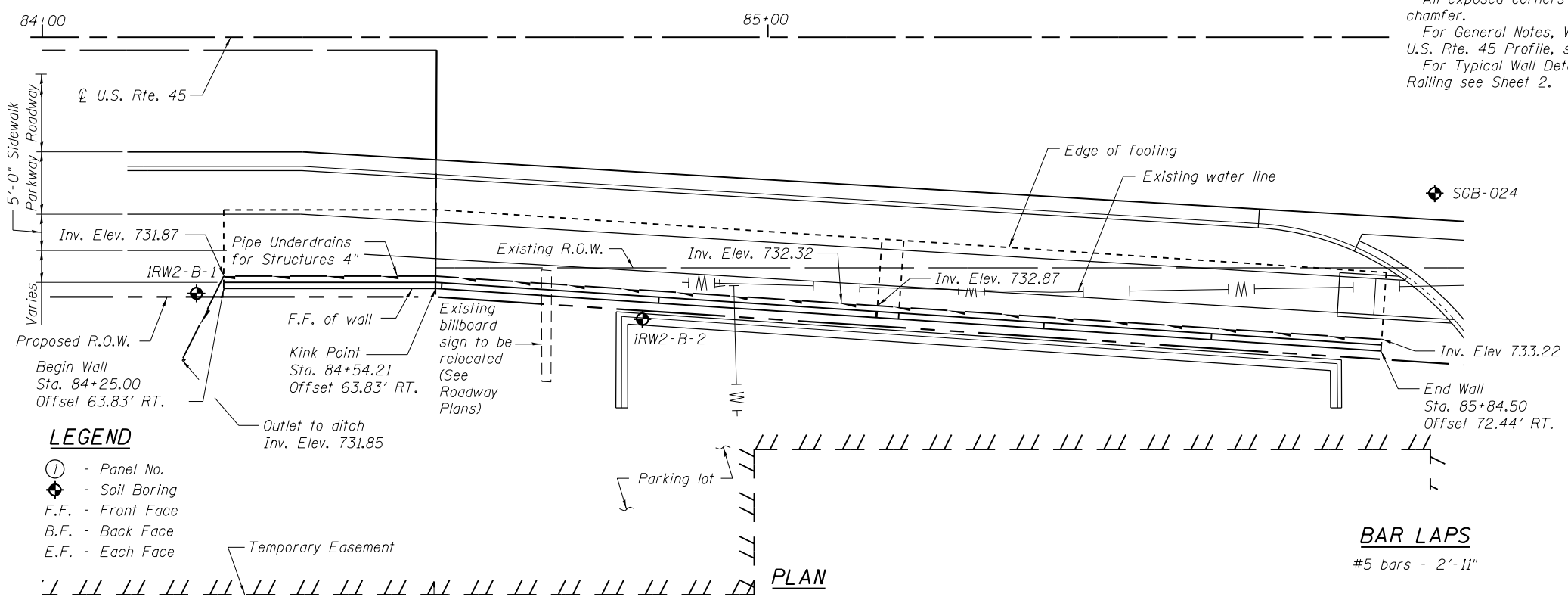
NOTES

Wall stations, offsets and dimensions are measured at front face of wall.
All exposed corners shall have a 1" chamfer.
For General Notes, Wall Key Plan and U.S. Rte. 45 Profile, see Sheet 1.
For Typical Wall Details and Ornamental Railing see Sheet 2.

BILL OF MATERIAL

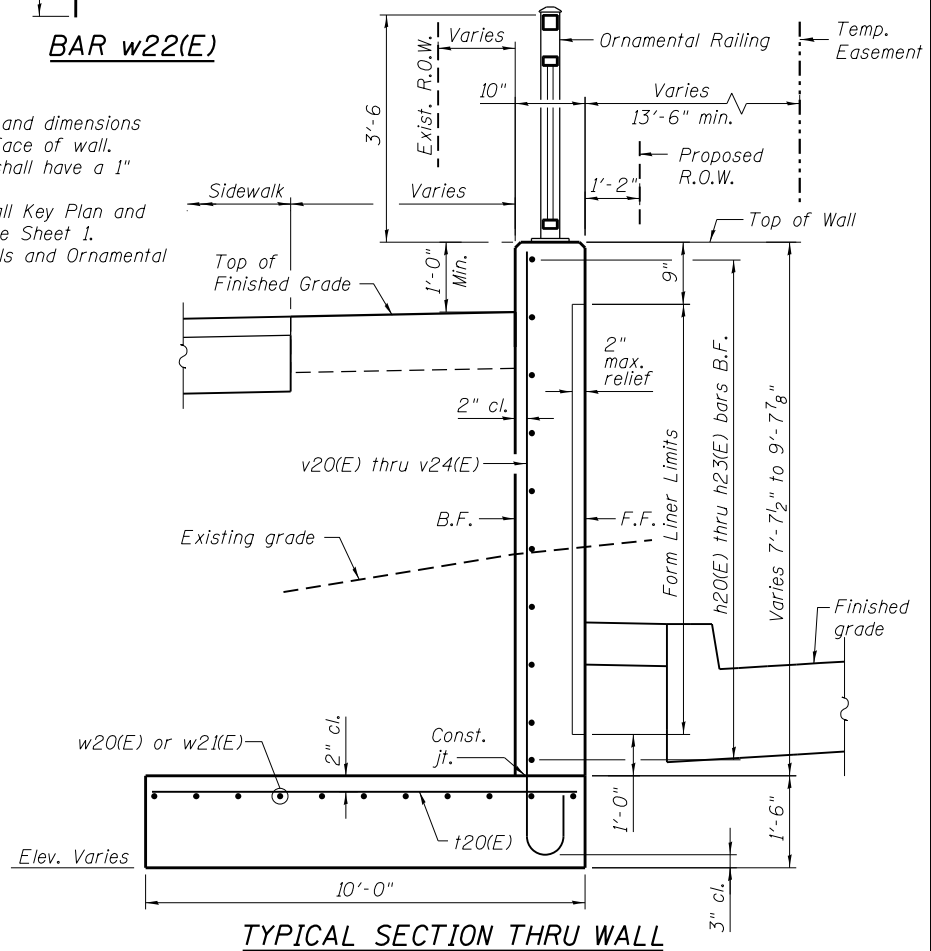
Bar	No.	Size	Length	Shape
h20(E)	11	#5	29'-8"	—
h21(E)	9	#5	22'-10"	—
h22(E)	22	#5	32'-11"	—
h23(E)	18	#5	26'-5"	—
v20(E)	121	#7	11'-6"	⌋
v21(E)	47	#7	10'-1"	⌋
v22(E)	48	#7	9'-6"	⌋
v23(E)	61	#7	11'-3"	⌋
v24(E)	47	#7	9'-11"	⌋
t20(E)	322	#5	9'-8"	—
w20(E)	33	#5	32'-9"	—
w21(E)	33	#5	25'-3"	—
w22(E)	11	#5	5'-2"	⌋
Structure Excavation			Cu. Yd.	447
Concrete Structures			Cu. Yd.	134.0
Form Liner Textured Surface			Sq. Ft.	1,136
Reinforcement Bars, Epoxy Coated			Pound	14,210
Geocomposite Wall Drain			Sq. Yd.	110
Granular Backfill for Structures			Cu. Yd.	147
Ornamental Railing			Foot	160
Pipe Underdrains for Structures 4"			Foot	164

Bars indicated thus 10x2-#5 etc. indicates 10 lines of bars with 2 lengths per line.



PLAN

BAR LAPS
#5 bars - 2'-11"



TYPICAL SECTION THRU WALL
Maximum Applied Bearing Pressure = 2.10 ksf

LEGEND

- ① - Panel No.
- ◆ - Soil Boring
- F.F. - Front Face
- B.F. - Back Face
- E.F. - Each Face
- Temporary Easement

100 S. WACKER DR.
 100 S/W/TE 600
 CHICAGO, IL 60606
 TEL (312) 939-1000
 FAX (312) 939-4998
URS

FILE NAME = D:\160F05-SHT-Wall.02-1.dgn	USER NAME = Anthony.Plutz	DESIGNED - MAI	REVISED -	STATE OF ILLINOIS DEPARTMENT OF TRANSPORTATION	RETAINING WALL NO. 2 - S.N.016-2016 STA. 84 + 25.00 TO 85 + 84.50	F.A.P. RTE. 330	SECTION 103R-3	COUNTY COOK	TOTAL SHEETS 932	SHEET NO. 560	
PLOT SCALE = 20.0000' / in.	DRAWN - MAI	REVISOR -	REVISOR -			SHEET NO. 5 OF 41 SHEETS		CONTRACT NO. 60F05		ILLINOIS FED. AID PROJECT	
PLOT DATE = 3/12/2013	CHECKED - PMH	REVISOR -	REVISOR -								