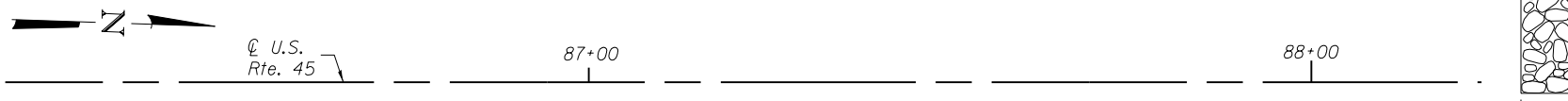
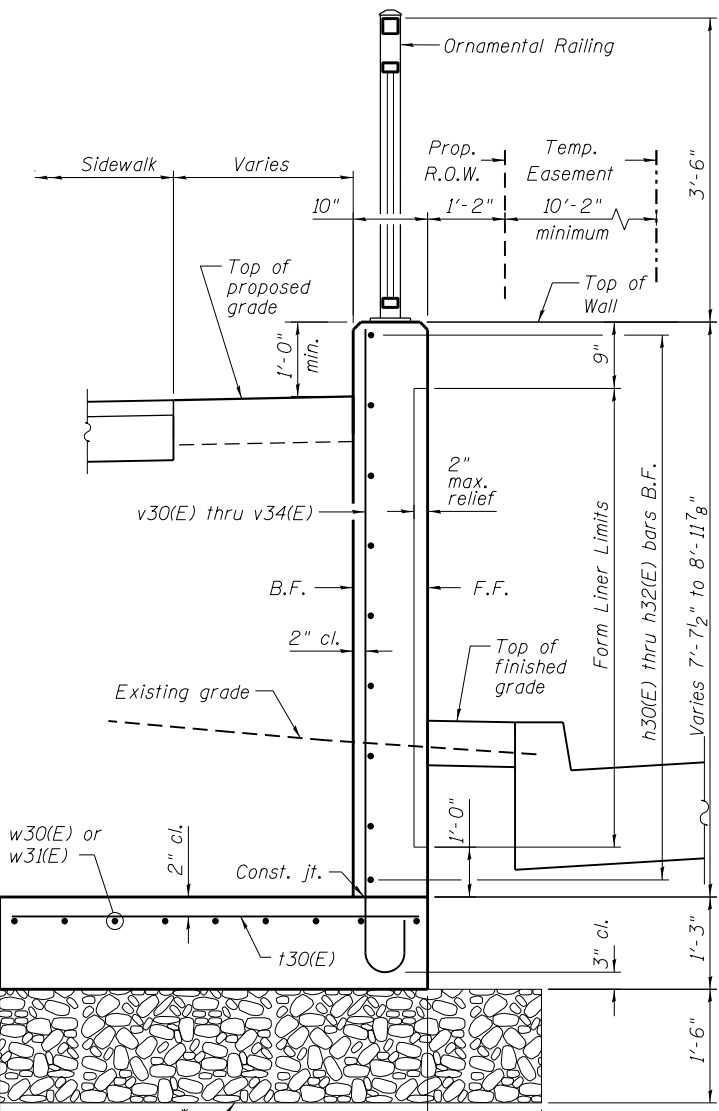


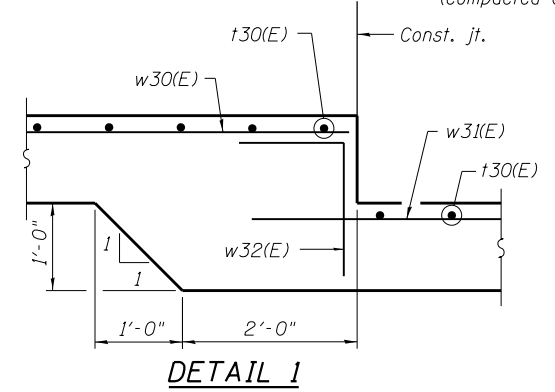
ELEVATION
(Looking West at F.F. of wall)



PLAN



TYPICAL SECTION THRU WALL
Maximum Applied Bearing Pressure = 1.80 ksf



A DIMENSION

Bar	A
v30(E)	8'-10"
v31(E)	9'-10"
v32(E)	9'-6"
v33(E)	9'-1"
v34(E)	8'-5"

BILL OF MATERIAL

Bar	No.	Size	Length	Shape
h30(E)	27	#5	32'-11"	
h31(E)	20	#5	29'-8"	
h32(E)	8	#5	9'-8"	
v30(E)	92	#6	9'-6"	
v31(E)	46	#6	10'-6"	
v32(E)	46	#6	10'-2"	
v33(E)	46	#6	9'-9"	
v34(E)	16	#6	9'-1"	
t30(E)	215	#6	8'-2"	
w30(E)	10	#5	29'-8"	
w31(E)	40	#5	35'-2"	
w32(E)	10	#5	4'-11"	
Structure Excavation			Cu. Yd.	328
Removal and Disposal of Unsuitable Material for Structures			Cu. Yd.	57
Concrete Structures			Cu. Yd.	105.0
Form Liner Textured Surface			Sq. Ft.	1,057
Reinforcement Bars, Epoxy Coated			Pound	9,730
Geocomposite Wall Drain			Sq. Yd.	101
Granular Backfill for Structures			Cu. Yd.	135
Ornamental Railing			Foot	160
Pipe Underdrains for Structures 4"			Foot	180
Granular Embankment, Special			Cu. Yd.	57

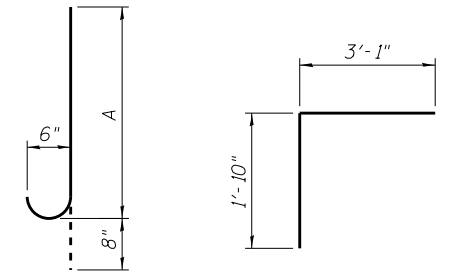
Bars indicated thus 9x4-#5 etc. indicates 9 lengths of bars with 4 bars per line.

NOTES

Wall stations, offsets and dimensions are measured at front face of wall. All exposed corners shall have a 1" chamfer. For General Notes, Wall Key Plan and U.S. Rte. 45 Profile, see Sheet 1. For Typical Wall Details and Ornamental Railing see Sheet 2.

BAR LAPS

#5 bars - 2'-11"



BARS v30(E), v31(E), v32(E), v33(E) & v34(E)

BAR w32(E)

100 S. WACKER DR.
SUITE 600
CHICAGO, IL 60606
TEL (312) 939-1000
FAX (312) 939-4998

URS

LEGEND

① - Panel No.
⊕ - Soil Boring
F.F. - Front Face
B.F. - Back Face
E.F. - Each Face

FILE NAME = D160F05-SHT-Wall.03-1.dgn
USER NAME = Anthony.Plutz
DESIGNED - MAI
CHECKED - PMH
PLOT SCALE = 25.0000' / in.
DRAWN - MAI
PLOT DATE = 3/12/2013
CHECKED - PMH
REVISED -

**STATE OF ILLINOIS
DEPARTMENT OF TRANSPORTATION**

**RETAINING WALL NO. 3 - S.N. 016-2017
STA. 86 + 46.00 TO 88 + 06.00**
SHEET NO. 6 OF 41 SHEETS

F.A.P. RTE.	SECTION	COUNTY	TOTAL SHEETS	SHEET NO.
330	103R-3	COOK	932	561
CONTRACT NO. 60F05				
ILLINOIS FED. AID PROJECT				