

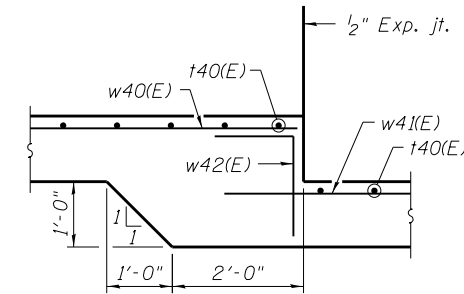
**BILL OF MATERIAL**

Bar	No.	Size	Length	Shape
h40(E)	10	#5	11'-8"	—
h41(E)	30	#5	29'-8"	—
h42(E)	47	#5	32'-11"	—
v40(E)	65	#6	10'-8"	—
v41(E)	46	#6	11'-0"	—
v42(E)	46	#6	10'-3"	—
v43(E)	46	#6	9'-11"	—
v44(E)	46	#6	9'-7"	—
v45(E)	46	#6	9'-3"	—
v46(E)	46	#6	8'-10"	—
v47(E)	46	#6	8'-6"	—
t40(E)	337	#6	9'-2"	—
w40(E)	11	#5	41'-8"	—
w41(E)	77	#5	33'-0"	—
w42(E)	11	#5	4'-11"	—
Structure Excavation		Cu. Yd.	599	
Concrete Structures		Cu. Yd.	177.7	
Form Liner Textured Surface		Sq. Ft.	1,697	
Reinforcement Bars, Epoxy Coated		Pound	16,190	
Geocomposite Wall Drain		Sq. Yd.	160	
Granular Backfill for Structures		Cu. Yd.	213	
Ornamental Railing		Foot	252	
Pipe Underdrains for Structures 4"		Foot	282	

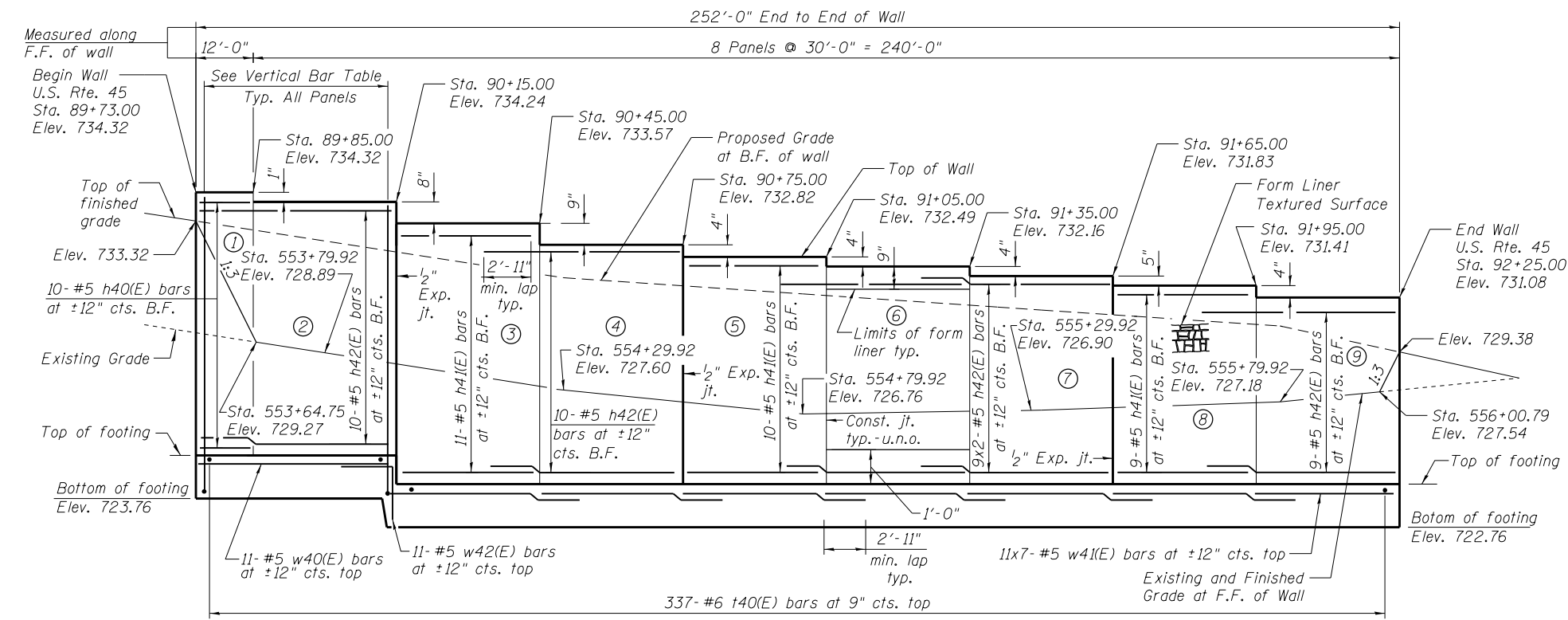
Bars indicated thus 9x2-#5 etc. indicates 9 lines of bars with 2 lengths per line.

**VERTICAL BAR TABLE**

Panel No.	Vertical Bars
1	19-#6 v40(E) bars at 8" cts. B.F.
2	46-#6 v40(E) bars at 8" cts. B.F.
3	46-#6 v41(E) bars at 8" cts. B.F.
4	46-#6 v42(E) bars at 8" cts. B.F.
5	46-#6 v43(E) bars at 8" cts. B.F.
6	46-#6 v44(E) bars at 8" cts. B.F.
7	46-#6 v45(E) bars at 8" cts. B.F.
8	46-#6 v46(E) bars at 8" cts. B.F.
9	46-#6 v47(E) bars at 8" cts. B.F.

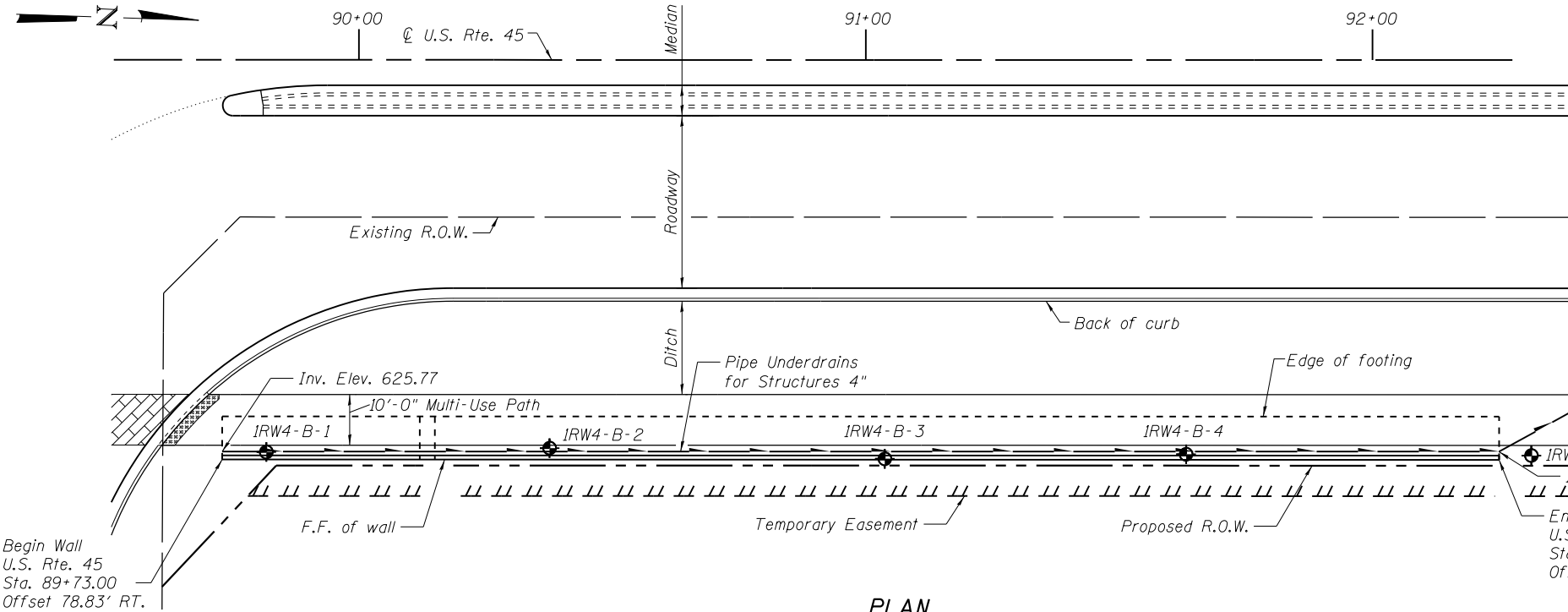


**DETAIL 1**

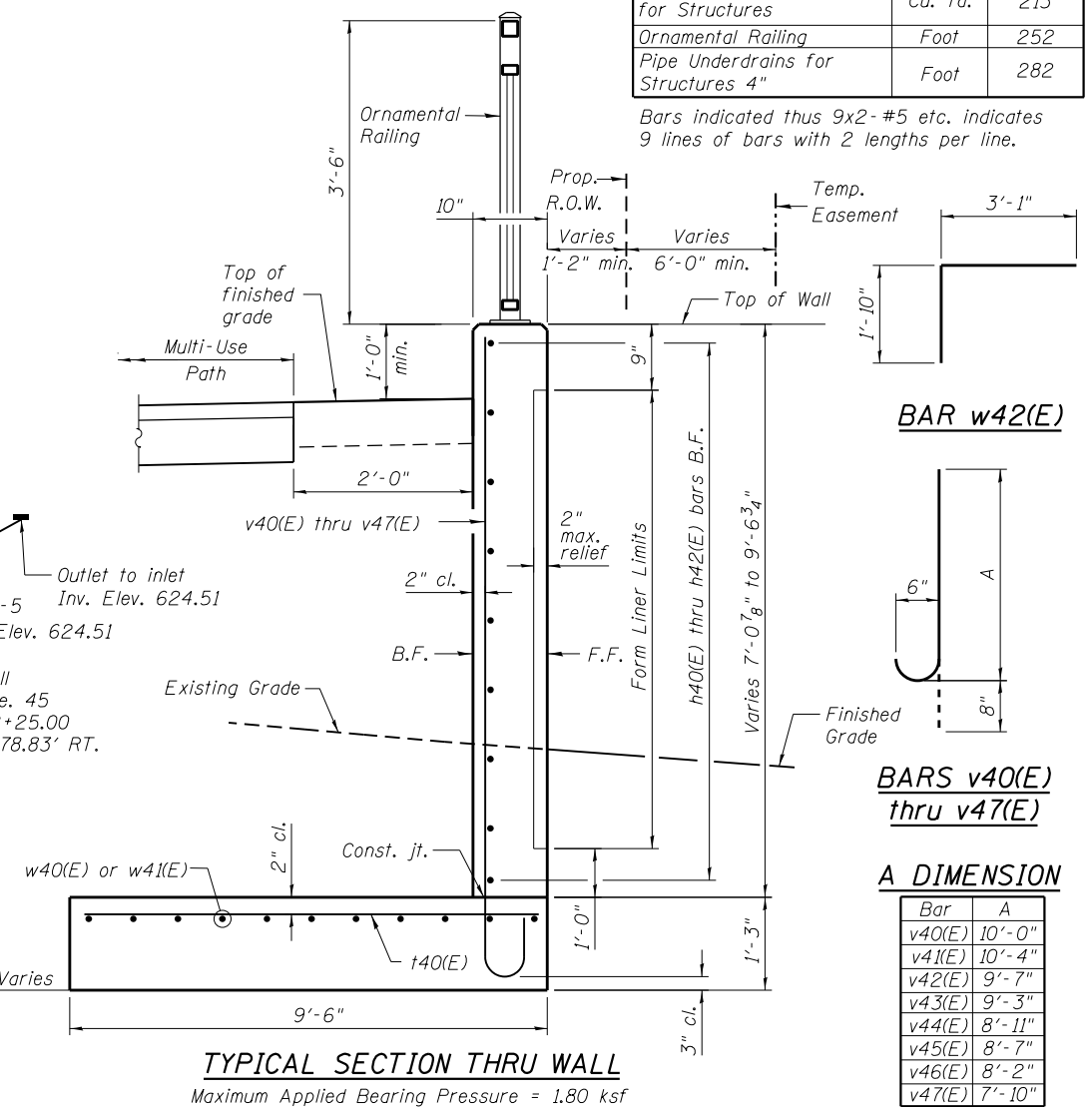


**ELEVATION**

(Looking West at F.F. of Wall)



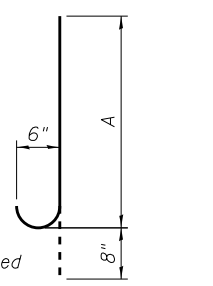
**PLAN**



**TYPICAL SECTION THRU WALL**

Maximum Applied Bearing Pressure = 1.80 ksf

**BAR w42(E)**



**BARS v40(E) thru v47(E)**

**A DIMENSION**

Bar	A
v40(E)	10'-0"
v41(E)	10'-4"
v42(E)	9'-7"
v43(E)	9'-3"
v44(E)	8'-11"
v45(E)	8'-7"
v46(E)	8'-2"
v47(E)	7'-10"

**NOTES**

Wall stations, offsets and dimensions are measured at front face of wall.  
 All exposed corners shall have a 1" chamfer.  
 For General Notes, Wall Key Plan and U.S. Rte. 45 Profile, see Sheet 1.  
 For Typical Wall Details and Ornamental Railing see Sheet 2.

**BAR LAPS**

#5 bars - 2'-11"

**LEGEND**

- ① - Panel No.
- ⊕ - Soil Boring
- F.F. - Front Face
- B.F. - Back Face
- E.F. - Each Face

FILE NAME = D160F05-SHT-Wall.04-1.dgn

USER NAME = Anthony.Plutz

DESIGNED - MAI  
 CHECKED - PMH

REVISED -  
 REVISED -

PLOT SCALE = 32.0000' / in.  
 PLOT DATE = 3/12/2013

DRAWN - MAI  
 CHECKED - PMH

REVISED -  
 REVISED -

**STATE OF ILLINOIS  
 DEPARTMENT OF TRANSPORTATION**

**RETAINING WALL NO. 4 - S.N.016-2018  
 STA. 89+73.00 TO 92+25.00**

SHEET NO. 7 OF 41 SHEETS

F.A.P. R.T.E. 330 SECTION 103R-3 COUNTY COOK TOTAL SHEETS 932 SHEET NO. 562

CONTRACT NO. 60F05

ILLINOIS FED. AID PROJECT