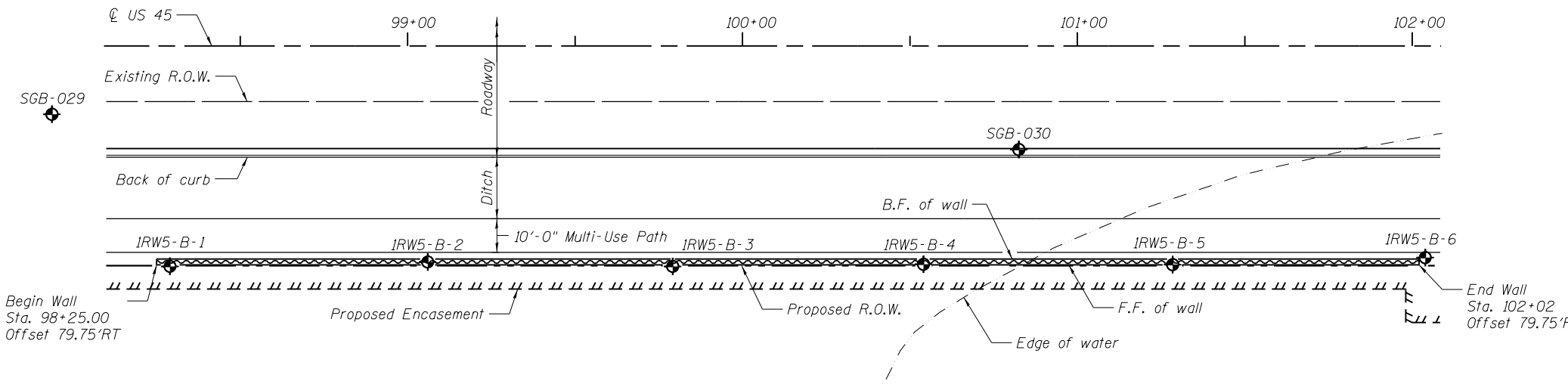


ELEVATION
(Looking West at F.F. of Wall)



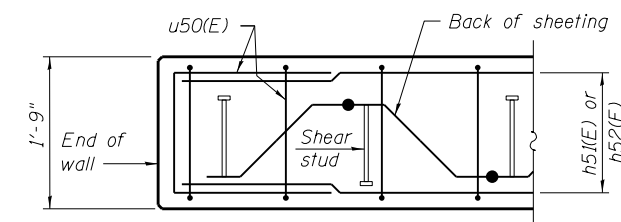
PLAN

LEGEND

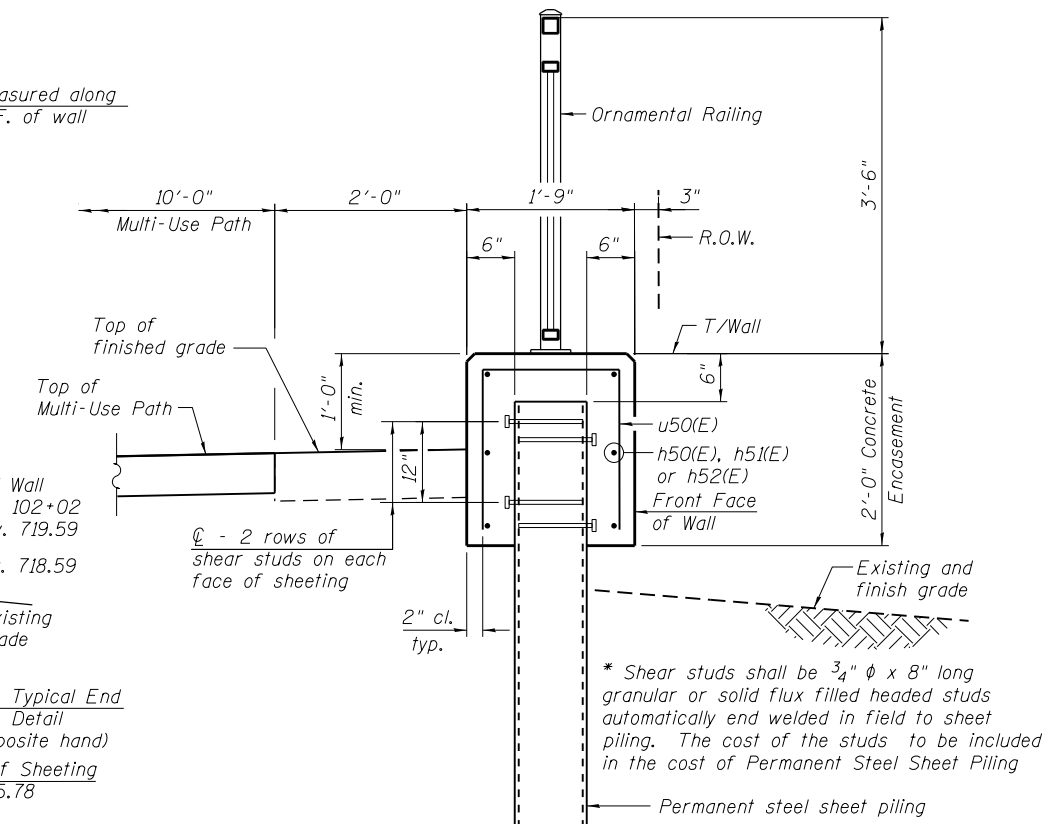
- ⊙ - Panel No.
- ⊕ - Soil Boring
- F.F. - Front Face
- B.F. - Back Face
- E.F. - Each Face

BAR LAPS

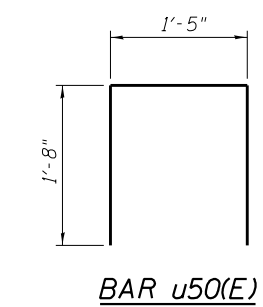
Basic Lap	Top Bar Lap
#5 bars - 2'-7"	#5 bars - 2'-11"



PLAN AT END OF WALL



TYPICAL SECTION THROUGH WALL



BAR u50(E)

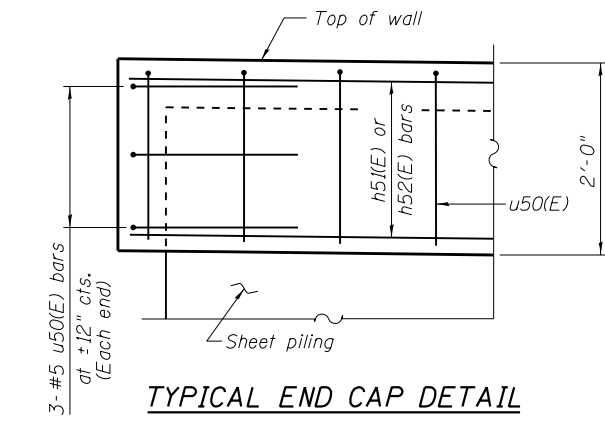
BILL OF MATERIAL

Bar	No.	Size	Length	Shape
h50(E)	48	#5	32'-11"	—
h5(E)	24	#5	29'-8"	—
h52(E)	6	#5	16'-8"	—
u50(E)	388	#5	4'-9"	⊏
Concrete Structures		Cu. Yd.	48.9	
Reinforcement Bars, Epoxy Coated		Pound	4,420	
Permanent Steel Sheet Piling		Sq. Ft.	5,243	
Ornamental Railing		Foot	377	

Bars indicated thus 3x2-#5 etc. indicates 3 lines of bars with 2 lengths per line.

NOTES:

Wall stations, offsets and dimensions are measured at front face of wall. All exposed corners shall have a 1" chamfer. For General Notes, Wall Key Plan and US 45 Profile, see Sheet 1. For Typical Wall Details and Ornamental Railing see Sheet 2. The details for the concrete cap, reinforcement and required number of shear stud connectors are based on Section AZ 18 sheet piling. If the Contractor chooses to use any other section, then the Contractor shall submit revised concrete cap and reinforcement configuration for approval by the Engineer. Such changes shall not be cause for additional compensation.



TYPICAL END CAP DETAIL

100 S. WACKER DR.
 CHICAGO, IL 60606
 TEL (312) 935-1000
 FAX (312) 935-4998
URS

FILE NAME = D160F05-SHT-Wall.05-1.dgn	USER NAME = Anthony.Plutz	DESIGNED -	REVISED -	STATE OF ILLINOIS DEPARTMENT OF TRANSPORTATION	RETAINING WALL NO. 5 - S.N.016-2019 STA. 98 + 25.00 TO 102 + 02.00	F.A.P. R.T.E. = 330	SECTION = 103R-3	COUNTY = COOK	TOTAL SHEETS = 932	SHEET NO. = 563	
PLOT SCALE = 43.33' / in.	DRAWN -	REVISED -	SHEET NO. 8 OF 41 SHEETS			CONTRACT NO. 60F05					
PLOT DATE = 3/12/2013	CHECKED -	REVISED -	ILLINOIS FED. AID PROJECT								