

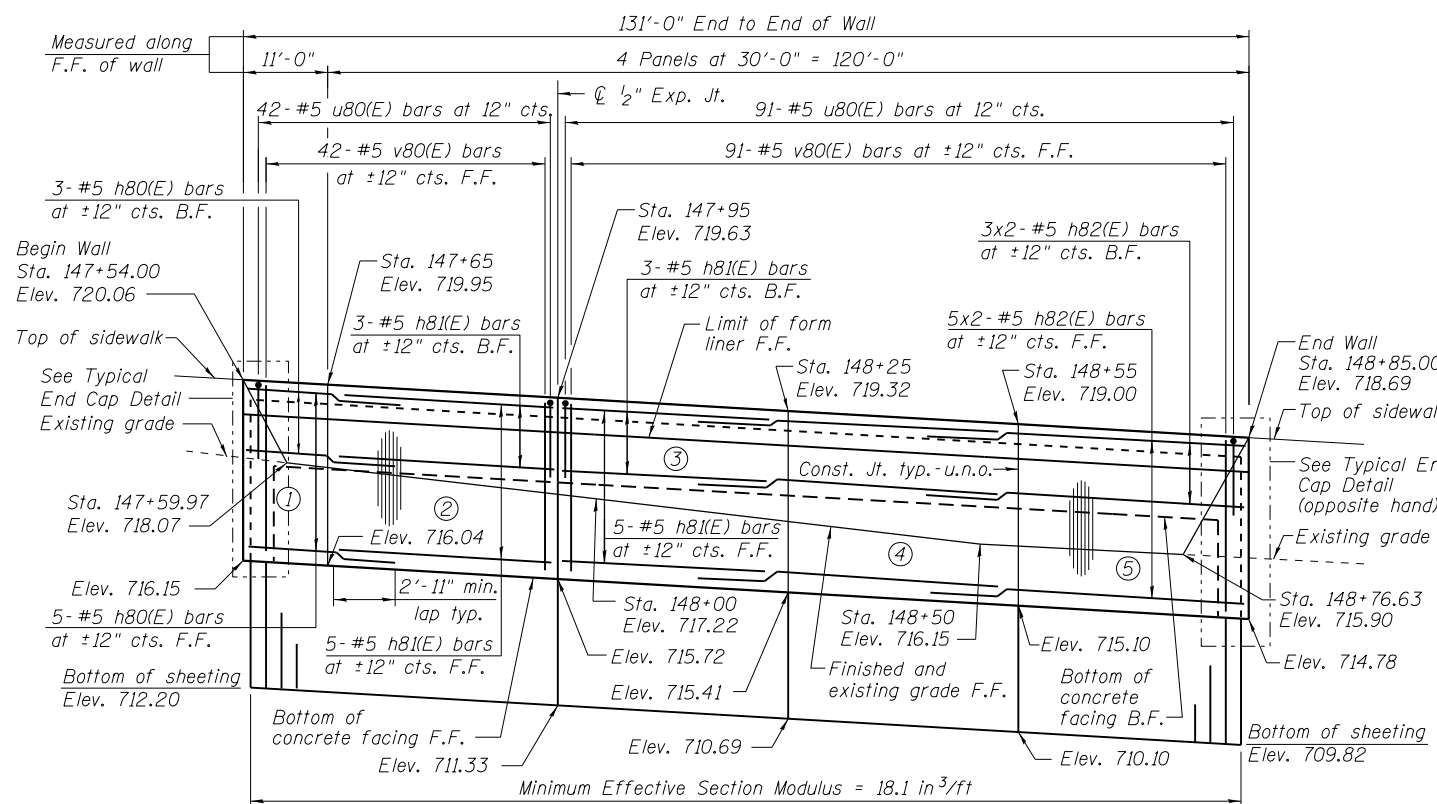
BILL OF MATERIAL

Bar	No.	Size	Length	Shape
h80(E)	8	#5	14'-3"	—
h81(E)	16	#5	29'-8"	—
h82(E)	16	#5	32'-11"	—
v80(E)	137	#5	3'-4"	—
u80(E)	143	#5	4'-9"	□
Structure Excavation		Cu. Yd.	44	
Concrete Structures		Cu. Yd.	24.6	
Form Liner Textured Surface		Sq. Ft.	337	
Reinforcement Bars, Epoxy Coated		Pound	2,350	
Permanent Sheet Piling		Sq. Ft.	1,062	
Ornamental Railing		Foot	131	

Bars indicated thus 9x2-#5 etc. indicates 9 lines of bars with 2 lengths per line.

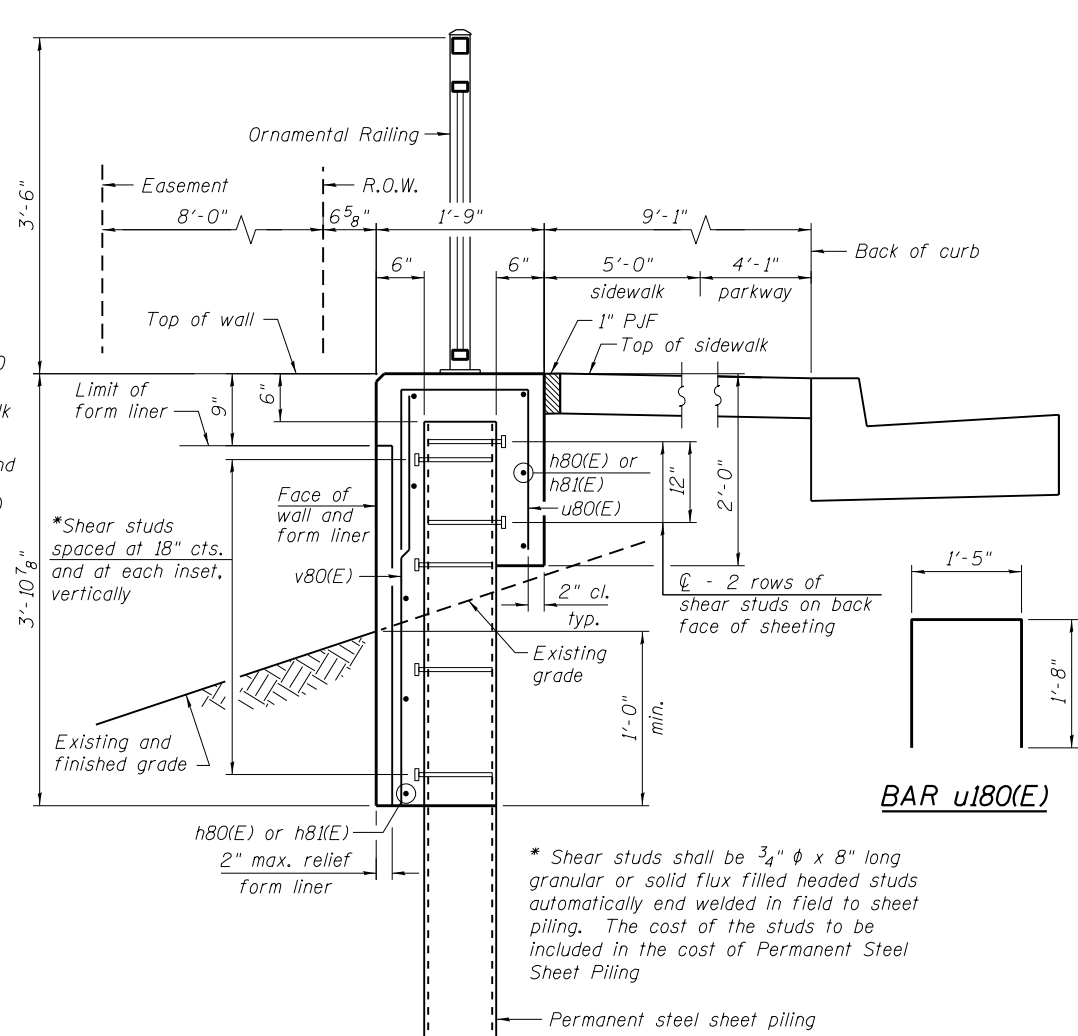
NOTES:

Wall stations, offsets and dimensions are measured at front face of wall.
 All exposed corners shall have a 1" chamfer.
 For General Notes, Wall Key Plan and US 45 Profile, see Sheet 1.
 For Typical Wall Details and Ornamental Railing see Sheet 2.
 The details for the concrete cap, reinforcement and required number of shear stud connectors are based on Section AZ 18 sheet piling. If the Contractor chooses to use any other section, then the Contractor shall submit revised concrete cap and reinforcement configuration for approval by the Engineer. Such changes shall not be cause for additional compensation.

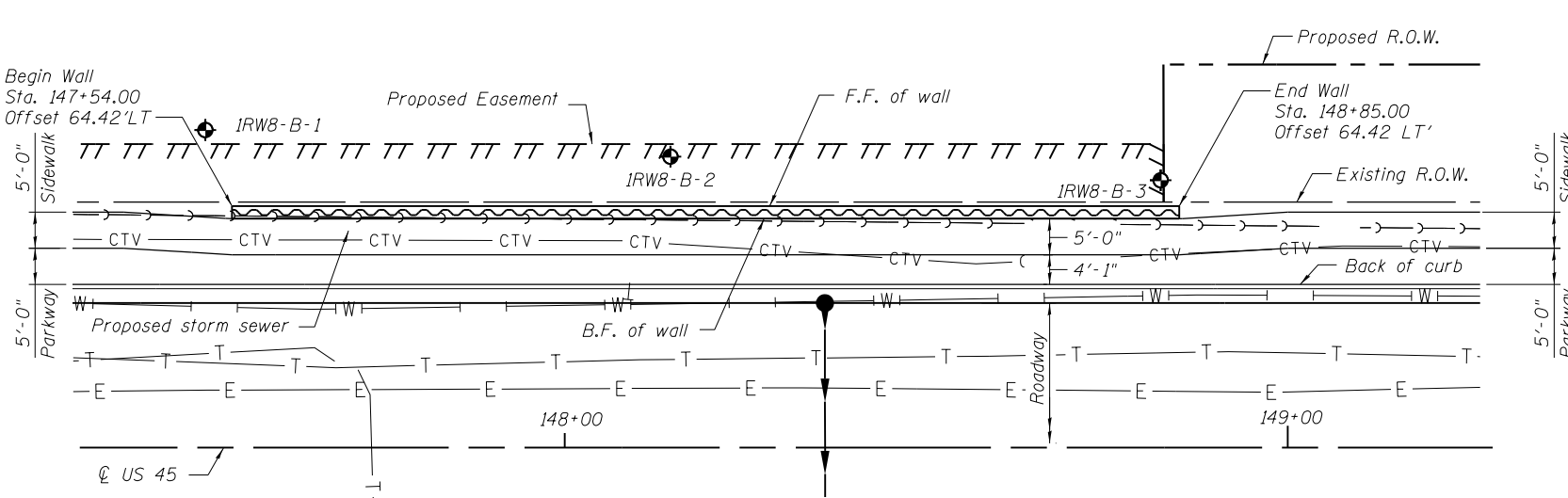


ELEVATION

(Looking West - F.F. of wall shown)



TYPICAL SECTION THROUGH WALL



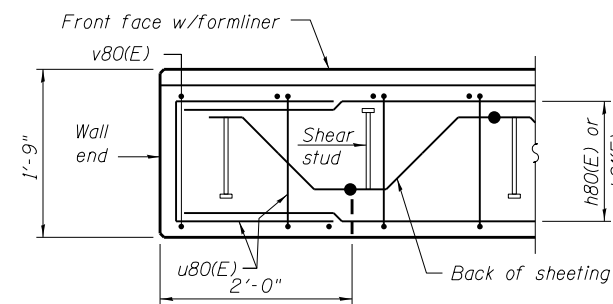
PLAN

LEGEND

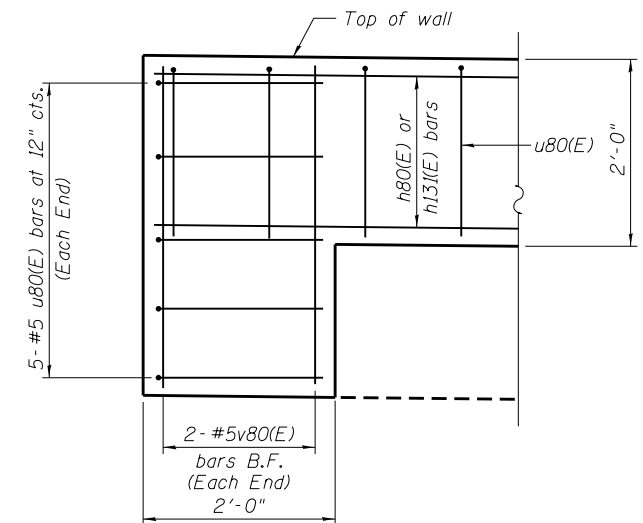
- ① - Panel No.
- ⊕ - Soil Boring
- F.F. - Front Face
- B.F. - Back Face
- E.F. - Each Face

BAR LAPS

Basic Lap #5 bars - 2'-7"
 Top Lap #5 bars - 2'-11"



PLAN AT END OF WALL



TYPICAL END CAP DETAIL

(v(E) bars in F.F. not shown for clarity)

100 S. WACKER DR.
 5TH FLOOR
 CHICAGO, IL 60606
 TEL (312) 939-1000
 FAX (312) 939-4998

URS

FILE NAME = D:\160F05-SHT-Wall.08-1.dgn	USER NAME = Anthony.Plutz	DESIGNED -	REVISED -
		CHECKED -	REVISED -
		DRAWN -	REVISED -
		CHECKED -	REVISED -

**STATE OF ILLINOIS
 DEPARTMENT OF TRANSPORTATION**

**RETAINING WALL NO. 8 - S.N. 016-2022
 STA. 147+54.00 TO 148+85.00**

SHEET NO. 11 OF 41 SHEETS

F.A.P. RTE. 330	SECTION 103R-3	COUNTY COOK	TOTAL SHEETS 932	SHEET NO. 566
CONTRACT NO. 60F05			ILLINOIS FED. AID PROJECT	