

BILL OF MATERIAL

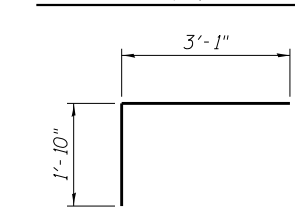
| Bar | No. | Size | Length | Shape |
|------------------------------------|-----|------|---------|-------|
| h90(E) | 10 | #5 | 32'-8" | — |
| h91(E) | 19 | #5 | 32'-11" | — |
| h92(E) | 1 | #5 | 17'-11" | — |
| v90(E) | 51 | #6 | 10'-10" | ⌋ |
| v91(E) | 46 | #6 | 10'-2" | ⌋ |
| v92(E) | 23 | #6 | 9'-10" | ⌋ |
| v93(E) | 23 | #6 | 8'-10" | ⌋ |
| t90(E) | 125 | #6 | 9'-2" | — |
| w90(E) | 30 | #5 | 28'-9" | — |
| w91(E) | 10 | #5 | 14'-8" | — |
| w92(E) | 10 | #5 | 4'-11" | ⌋ |
| Structure Excavation | | | Cu. Yd. | 233 |
| Concrete Structures | | | Cu. Yd. | 66.7 |
| Form Liner Textured Surface | | | Sq. Ft. | 642 |
| Reinforcement Bars, Epoxy Coated | | | Pound | 6,020 |
| Geocomposite Wall Drain | | | Sq. Yd. | 62 |
| Granular Backfill for Structures | | | Cu. Yd. | 82 |
| Ornamental Railing | | | Foot | 93 |
| Pipe Underdrains for Structures 4" | | | Foot | 103 |

Bars indicated thus 9x3-#5 etc. indicates 9 lines of bars with 3 lengths per line.

A DIMENSION

| Bar | A |
|--------|--------|
| v90(E) | 10'-2" |
| v91(E) | 9'-6" |
| v92(E) | 9'-2" |
| v93(E) | 8'-2" |

BARS v90(E) THRU v93(E)



BAR w92(E)

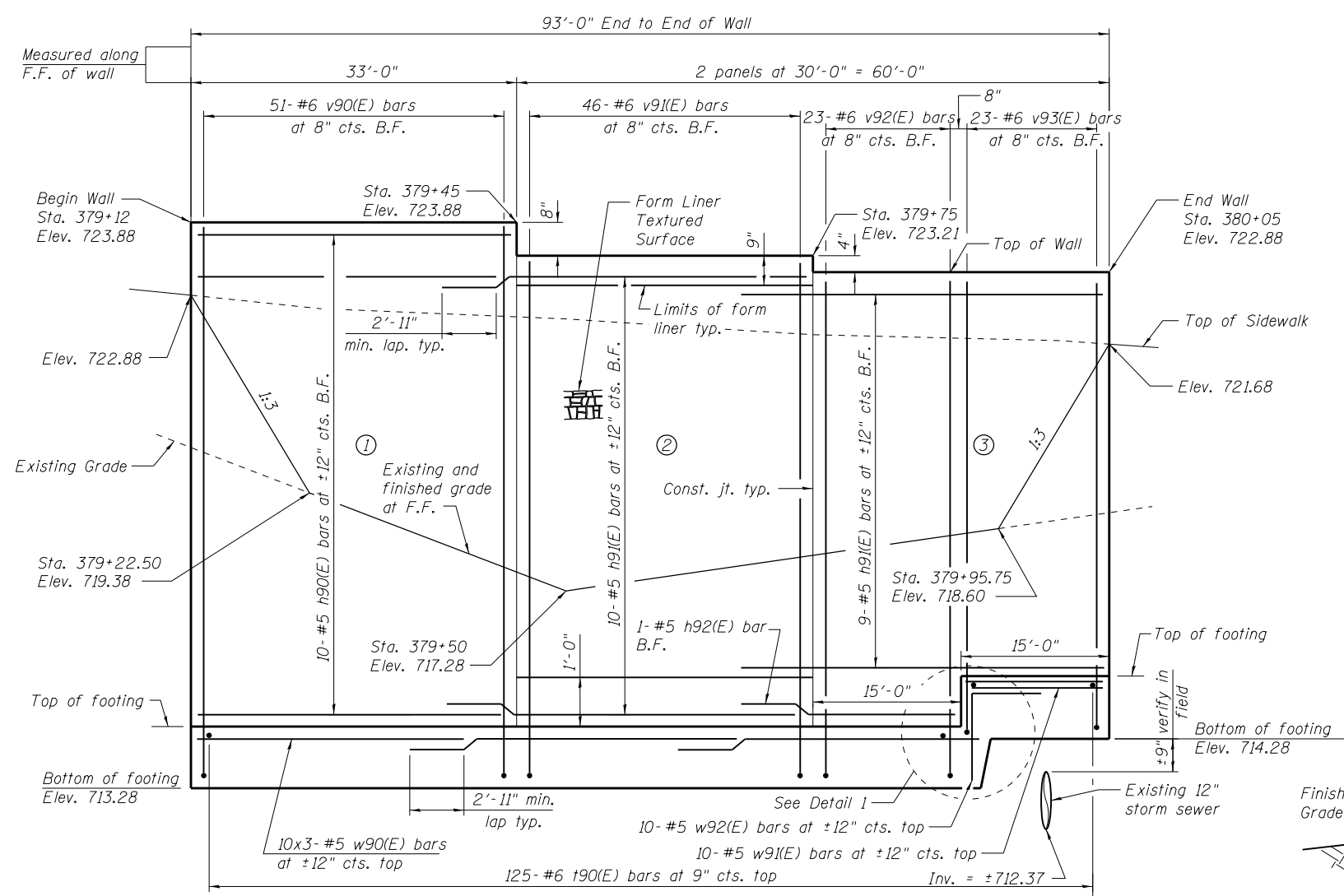


NOTES

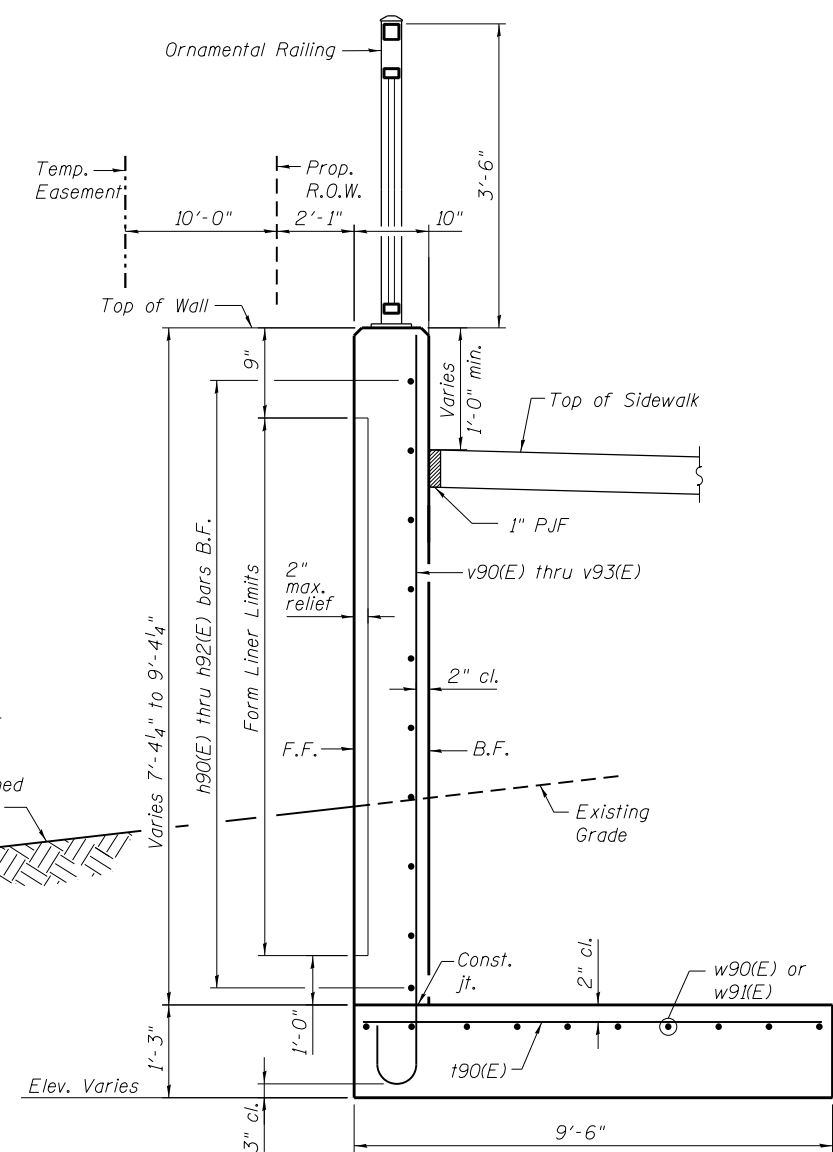
Wall stations, offsets and dimensions are measured at front face of wall.
 All exposed corners shall have a 1" chamfer.
 For General Notes, Wall Key Plan and 163rd St. Profile, see Sheet 1.
 For Typical Wall Details and Ornamental Railing see Sheet 2.

BAR LAPS

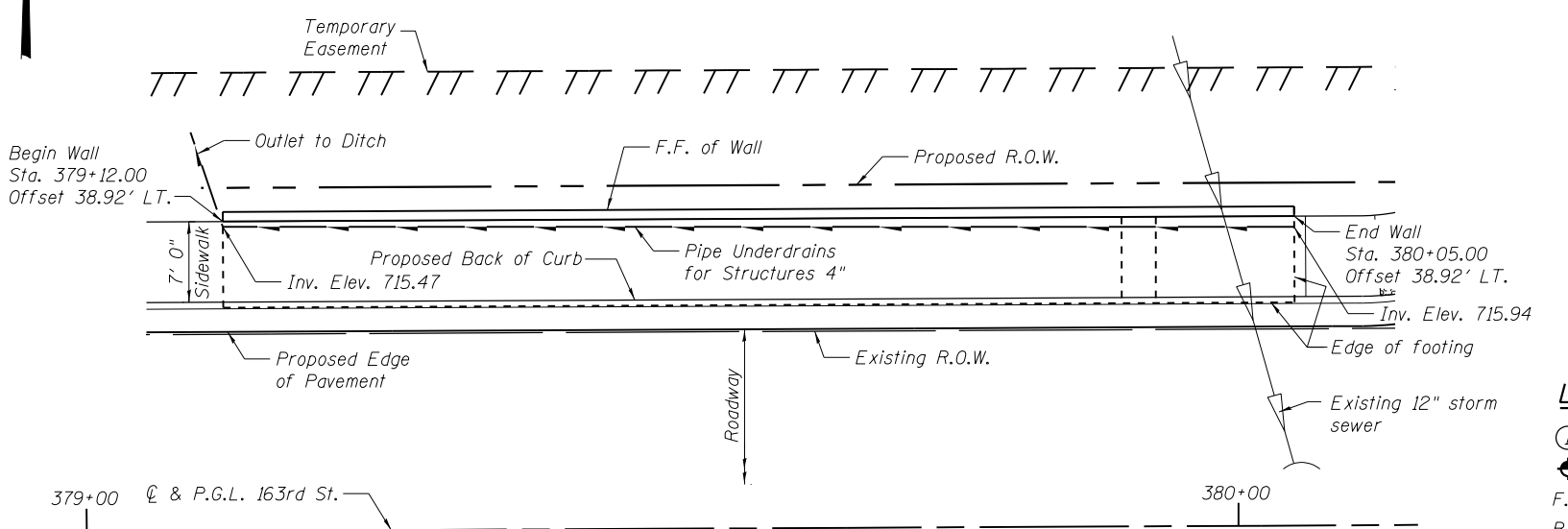
#5 bars - 2'-11"



ELEVATION
(Looking North)



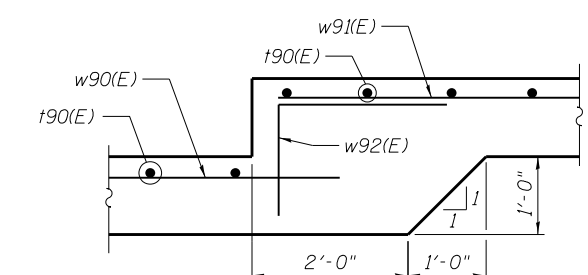
TYPICAL SECTION THRU WALL
Maximum Applied Bearing Pressure = 1.80 ksf



PLAN

LEGEND

- ① - Panel No.
- ◆ - Soil Boring
- F.F. - Front Face
- B.F. - Back Face
- E.F. - Each Face



DETAIL 1

100 S. WACKER DR.
 SUITE 600
 CHICAGO, IL 60606
 TEL (312) 939-1000
 FAX (312) 939-4998
URS

| | | | | | | | | | | | |
|--|---------------------------|----------------|-------------|---|---|---------------------------|------------------|---------------|--------------------|-----------------|--|
| FILE NAME = D:\60F05-SHT-Wall.09-1.dgn | USER NAME = Anthony.Plutz | DESIGNED - MAI | REVISIONS - | STATE OF ILLINOIS DEPARTMENT OF TRANSPORTATION | RETAINING WALL NO. 9 - S.N. 016-2023 STA. 379+12 TO 380+05 | F.A.P. R.E. = 330 | SECTION = 103R-3 | COUNTY = COOK | TOTAL SHEETS = 932 | SHEET NO. = 567 | |
| PLOT SCALE = 1/8" = 1'-0" | DRAWN - MAI | CHECKED - PMH | REVISIONS - | | | CONTRACT NO. 60F05 | | | | | |
| PLOT DATE = 3/12/2013 | CHECKED - PMH | REVISIONS - | REVISIONS - | | | SHEET NO. 12 OF 41 SHEETS | | | | | |
| | | | | | | ILLINOIS FED. AID PROJECT | | | | | |