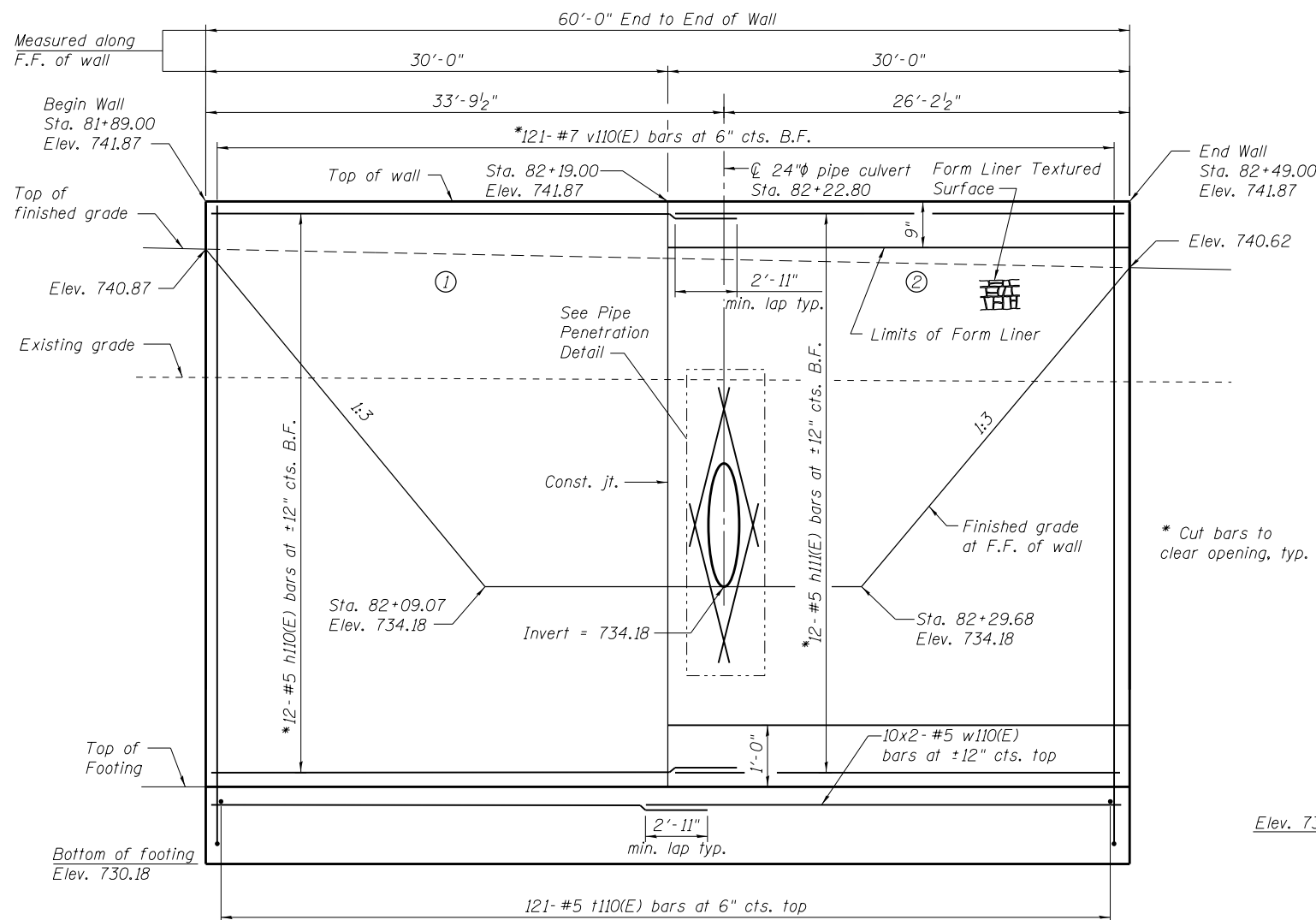


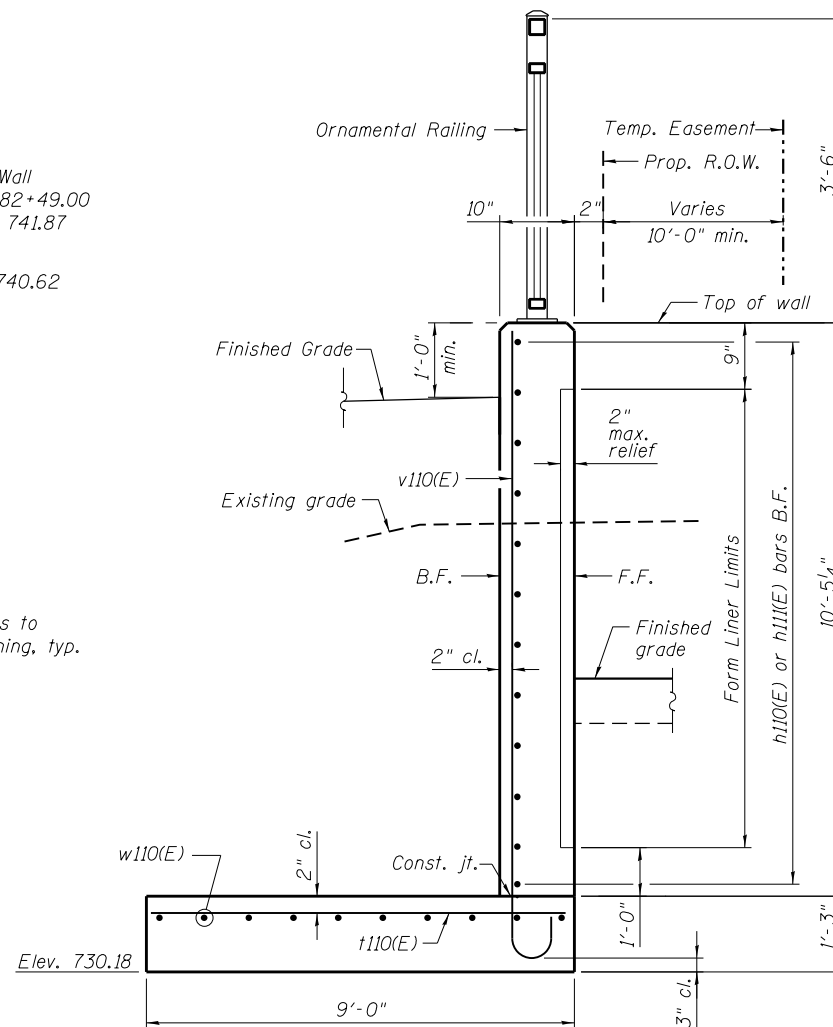
BILL OF MATERIAL

Bar	No.	Size	Length	Shape
h110(E)	12	#5	32'-11"	—
h111(E)	12	#5	29'-8"	—
h112(E)	16	#5	4'-4"	—
v110(E)	121	#7	12'-1"	—
t110(E)	121	#5	8'-8"	—
w110(E)	20	#5	31'-4"	—
Structure Excavation			Cu. Yd.	215
Removal and Disposal of Unsuitable Material for Structures			Cu. Yd.	15
Concrete Structures			Cu. Yd.	44.4
Form Liner Textured Surface			Sq. Ft.	522
Reinforcement Bars, Epoxy Coated			Pound	5,600
Geocomposite Wall Drain for Structures			Sq. Yd.	53
Granular Backfill for Structures			Cu. Yd.	70
Ornamental Railing			Foot	60
Pipe Underdrains for Structures 4"			Foot	80

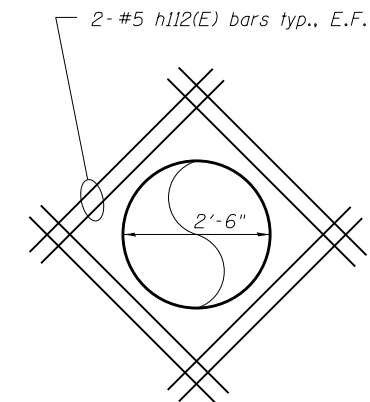
Bars indicated thus 10x2-#5 etc. indicates 10 lines of bars with 2 lengths per line.



* Cut bars to clear opening, typ.

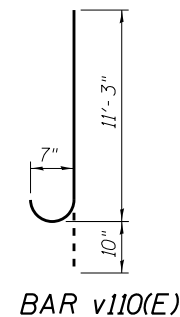


TYPICAL SECTION THRU WALL
Maximum Applied Bearing Pressure = 2.10 ksf



PIPE PENETRATION DETAIL

Trim vertical and horizontal bars to clear pipe openings



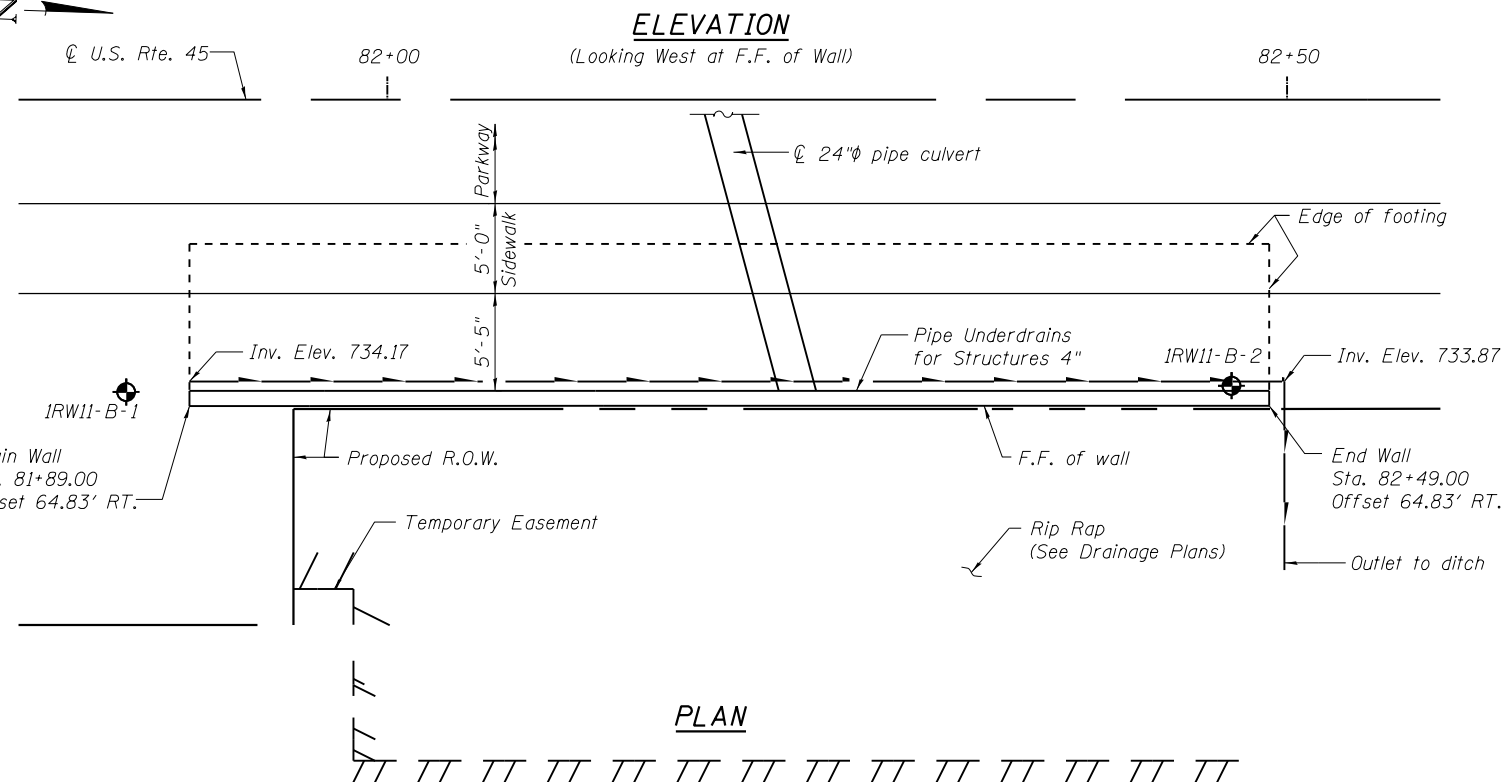
BAR v110(E)

NOTES

Wall stations, offsets and dimensions are measured at front face of wall.
All exposed corners shall have a 1" chamfer.
For General Notes, Wall Key Plan and U.S. Rte. 45 Profile, see Sheet 1.
For Typical Wall Details and Ornamental Railing see Sheet 2.

BAR LAPS

#5 bars - 2'-11"



PLAN

LEGEND

- ① - Panel No.
- ◆ - Soil Boring
- F.F. - Front Face
- B.F. - Back Face
- E.F. - Each Face

100 S. WACKER DR.
 SUITE 600
 CHICAGO, IL 60606
 TEL (312) 939-1000
 FAX (312) 939-4998
URS

FILE NAME = D160F05-SHT-Wall.11-1.dgn	USER NAME = Anthony.Plutz	DESIGNED - MAI	REVISIONS -	STATE OF ILLINOIS DEPARTMENT OF TRANSPORTATION	RETAINING WALL NO. 11 - S.N. 016-2025 STA. 81+89.00 TO 82+49.00	F.A.P. RTE. = 330	SECTION = 103R-3	COUNTY = COOK	TOTAL SHEETS = 932	SHEET NO. = 569	
PLOT SCALE = 1/8" = 1'-0"	DRAWN - MAI	CHECKED - PMH	REVISIONS -			CONTRACT NO. 60F05					
PLOT DATE = 3/12/2013	CHECKED - PMH	REVISIONS -	REVISIONS -			SHEET NO. 14 OF 41 SHEETS					
ILLINOIS FED. AID PROJECT											