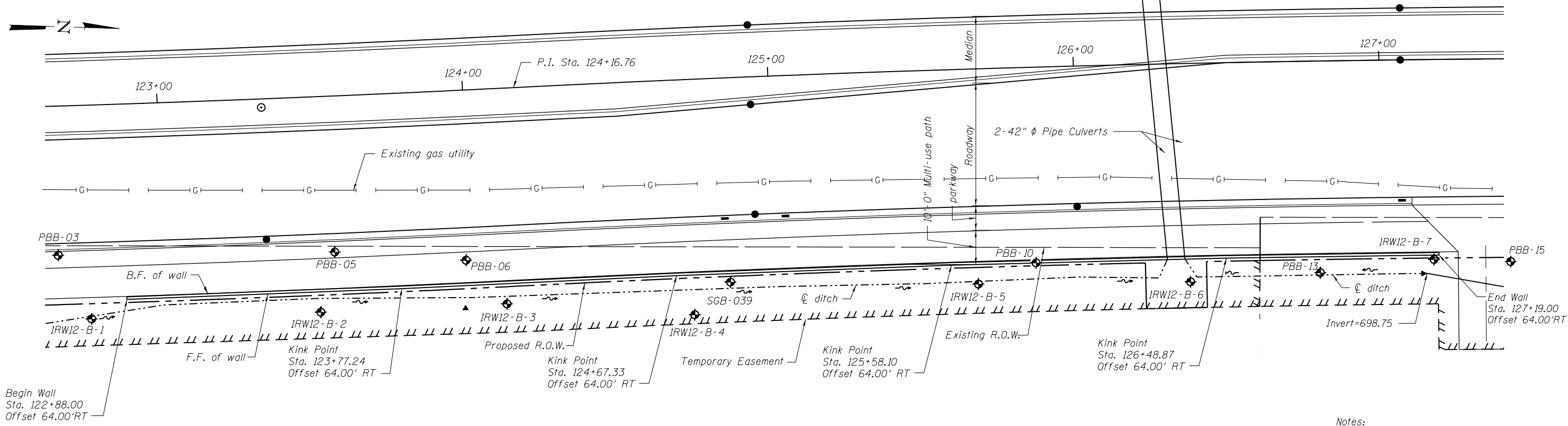


ELEVATION
(Looking west at F.F. of wall)



PLAN

LEGEND

- ① - Panel No.
- ⊕ - Soil Boring
- F.F. - Front Face
- B.F. - Back Face
- E.F. - Each Face

Notes:
 Wall stations, offsets and dimensions are measured at front face of wall.
 All exposed corners shall have a 1" chamfer.
 For General Notes, Wall Key Plan and US 45 Profile, see Sheet 1.
 For Typical Wall Details and Ornamental Railing see Sheet 2 and Sheet 20
 Quantities, Reinforcement List and Sections shown on Sheet 20.

100 S. WACKER DR.
 SUITE 600
 CHICAGO, IL 60606
 TEL (312) 939-1000
 FAX (312) 939-4998
URS

FILE NAME = D160F05-SHT-Wall.12-1.dgn	USER NAME = Anthony.Plutz	DESIGNED -	REVISED -	STATE OF ILLINOIS DEPARTMENT OF TRANSPORTATION	RETAINING WALL NO. 12 - S.N. 016-2026 STA. 122 + 88.00 TO 127 + 19.00	F.A.P. RTE. = 330	SECTION = 103R-3	COUNTY = COOK	TOTAL SHEETS = 932	SHEET NO. = 570		
	PLOT SCALE = 33.3333' / in.	CHECKED -	REVISED -			SHEET NO. 15 OF 41 SHEETS		CONTRACT NO. 60F05				
	PLOT DATE = 3/12/2013	DRAWN -	REVISED -			ILLINOIS FED. AID PROJECT						
		CHECKED -	REVISED -									