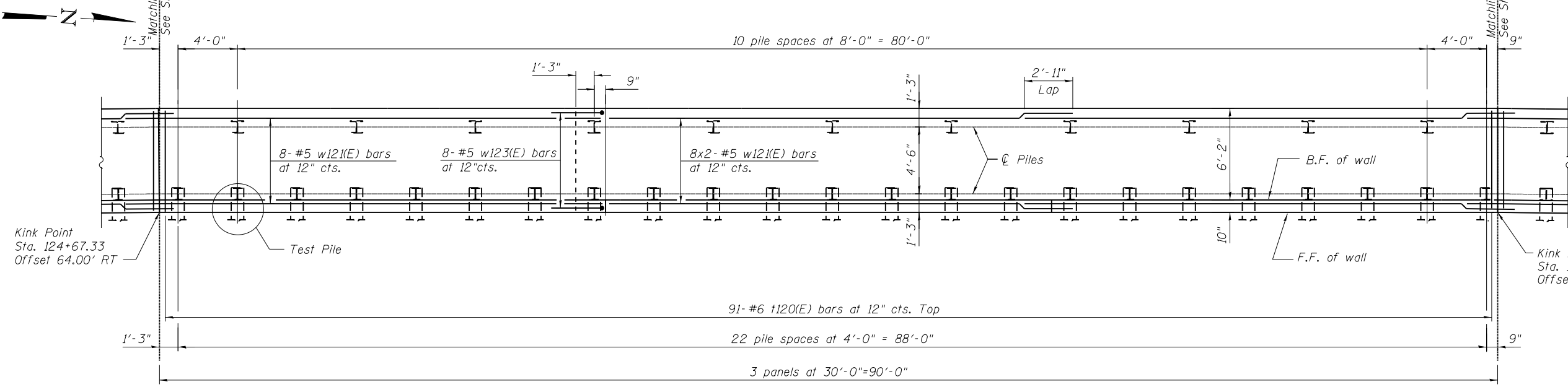


**ELEVATION**  
(Looking west at F.F. of wall)

- LEGEND**
- ① - Panel No.
  - ⊕ - Soil Boring
  - F.F. - Front Face
  - B.F. - Back Face
  - E.F. - Each Face
  - I - vertical pile
  - ⊥ - battered pile

- BAR LAPS**
- Top Bars #5 bars = 2'-11"
  - Other Bars #5 bars = 2'-7"

- NOTES**
- Wall stations, offsets and dimensions are measured at front face of wall.
  - All exposed corners shall have a 1" chamfer.
  - For General Notes, Wall Key Plan and US 45 Profile, see Sheet 1.
  - For Typical Wall Details and Ornamental Railing see Sheet 2 and 20.
  - Quantities and Reinforcement List and Sections shown on Sheet 20.
  - Bars indicated thus 1x3-#5 etc. indicates 1 line of bars with 3 lengths per line.
  - For Pile Data see Sheet 20.



**PLAN**

100 S. WACKER DR.  
 5TH FLOOR  
 CHICAGO, IL 60606  
 TEL (312) 939-1000  
 FAX (312) 939-4998  
**URS**

FILE NAME = D160F05-SHT-Wall.12-4.dgn	USER NAME = Anthony.Plutz	DESIGNED -	REVISED -	<b>STATE OF ILLINOIS DEPARTMENT OF TRANSPORTATION</b>	<b>RETAINING WALL NO. 12 - S.N. 016-2026 STA. 122 + 88.00 TO 127 + 19.00</b>	F.A.P. R.T.E. = 330	SECTION = 103R-3	COUNTY = COOK	TOTAL SHEETS = 932	SHEET NO. = 573	
	PLOT SCALE = 8:8.0000 '1' / in.	DRAWN -	REVISED -			SHEET NO. 18 OF 41 SHEETS					
	PLOT DATE = 3/12/2013	CHECKED -	REVISED -			CONTRACT NO. 60F05					
						ILLINOIS FED. AID PROJECT					