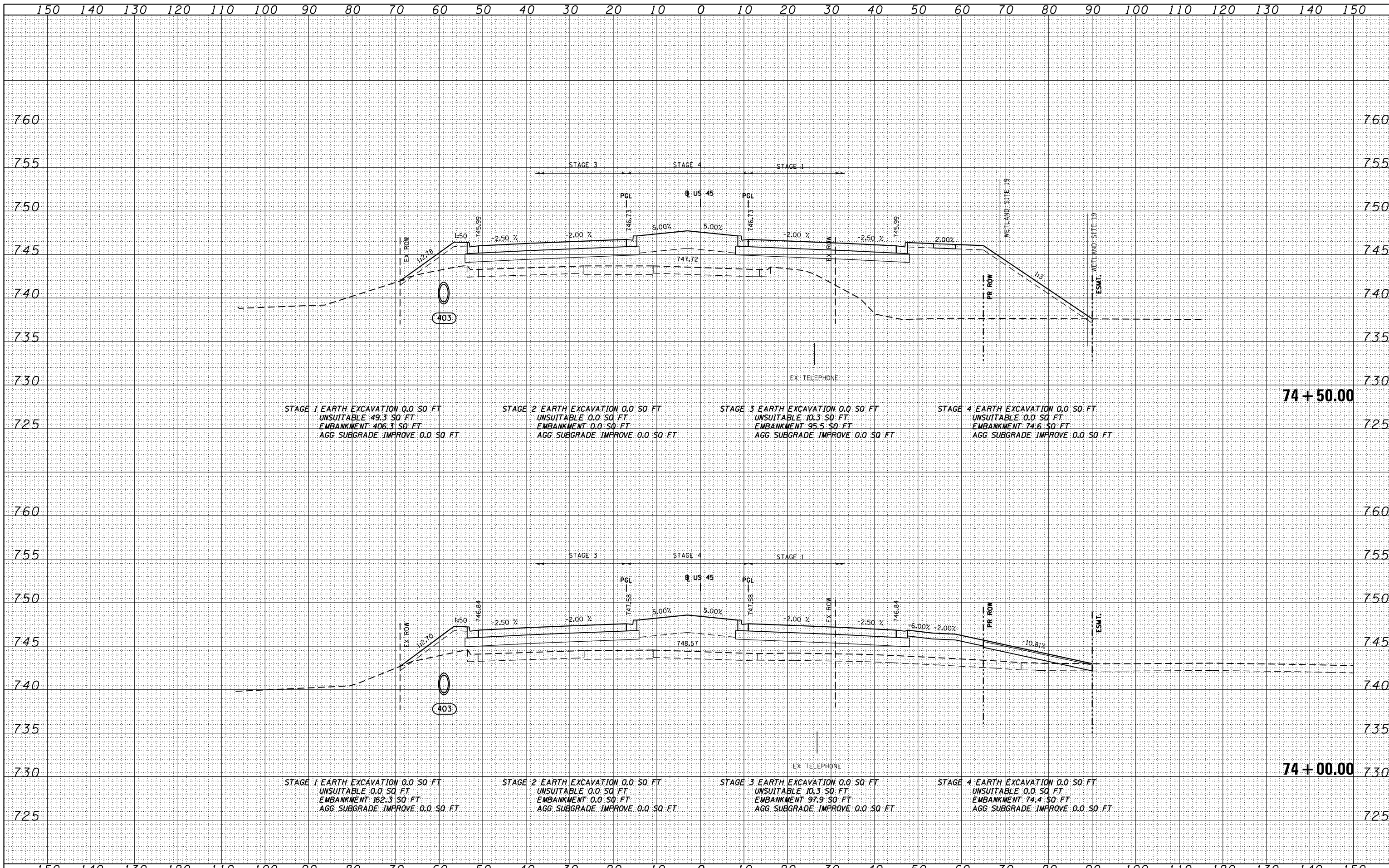


DATE	
BY	
FINISHED SURVEY	
PLOTTED	
TEMPLATE	
NOTE BOOK	
AREAS CHECKED	
NO.	

DATE	
BY	
ORIGINAL SURVEY	
PLOTTED	
TEMPLATE	
NOTE BOOK	
AREAS CHECKED	
NO.	

100 S. WACKER DR.  
 CHICAGO, IL 60606  
 TEL (312) 939-4000  
 FAX (312) 939-4098



FILE NAME =	USER NAME = Anthony.Plutz	DESIGNED - BFH	REVISED -	<b>STATE OF ILLINOIS</b> <b>DEPARTMENT OF TRANSPORTATION</b>	<b>US 45 CROSS SECTIONS</b> SCALE: 1"=10'H; 1"=5'V SHEET NO. 53 OF 147 SHEETS STA. 74+00.00 TO STA. 74+50.00			F.A.P. RTE.	SECTION	COUNTY	TOTAL SHEETS	SHEET NO.
D160F05-SHT-XSST01.dgn		DRAWN - BFH	REVISED -					330	103R-3	COOK	932	790
		CHECKED - EUG	REVISED -					<b>XS-US45-53</b>				CONTRACT NO. 60F05
		DATE - 03/13/13	REVISED -					ILLINOIS FED. AID PROJECT				