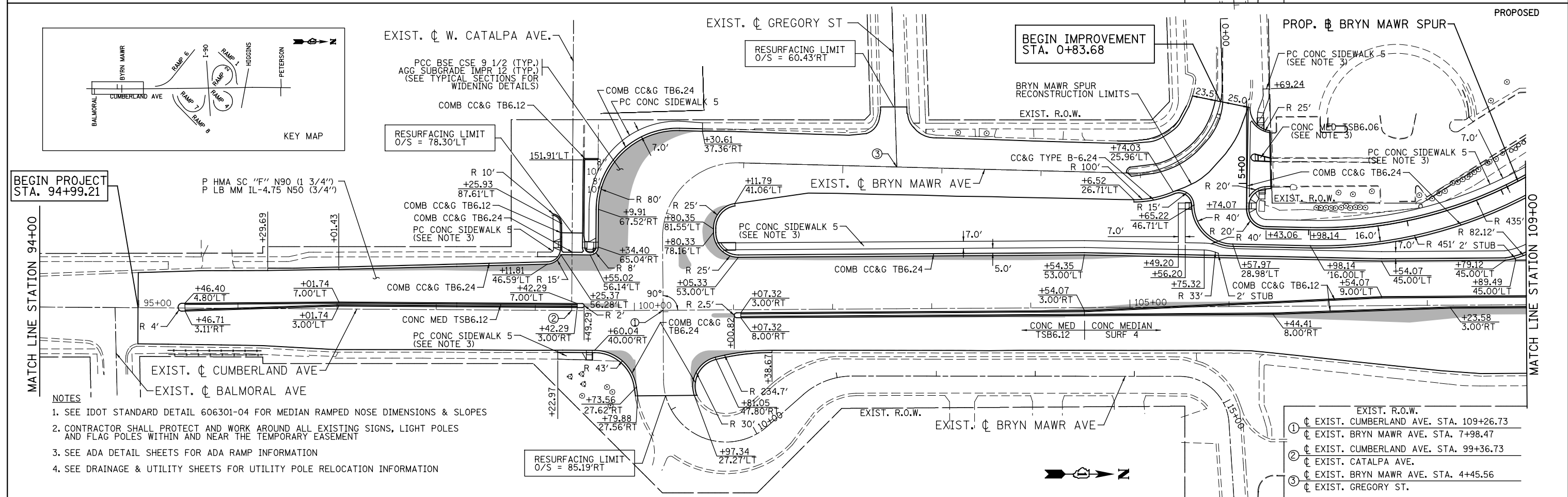
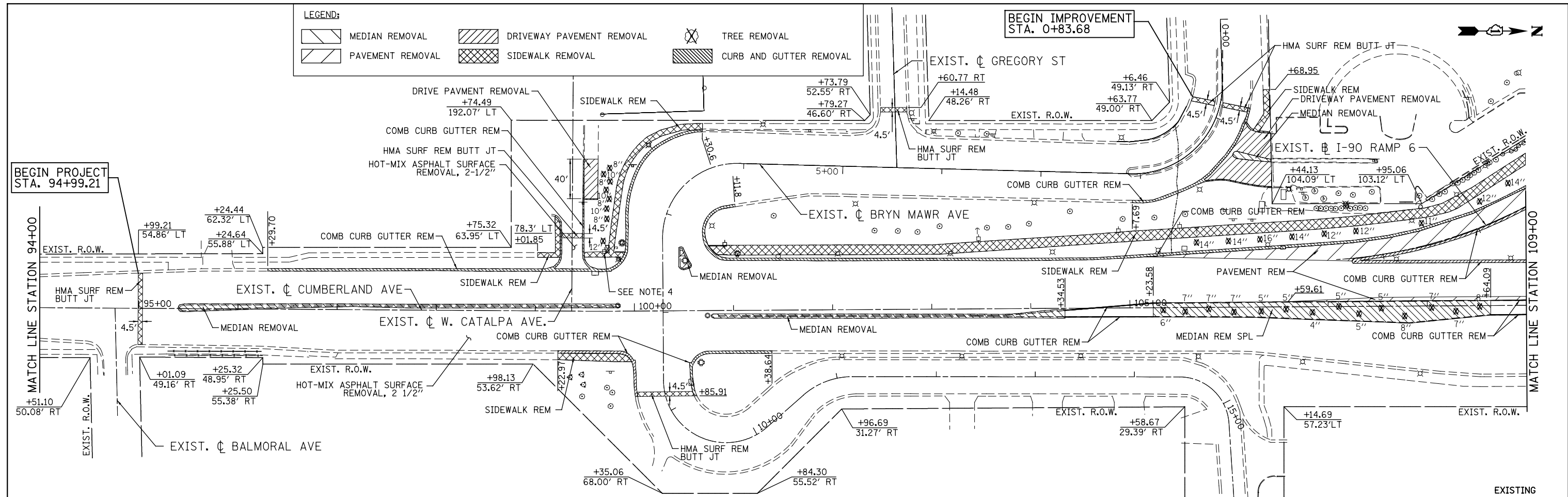


LEGEND:

	MEDIAN REMOVAL		DRIVEWAY PAVEMENT REMOVAL		TREE REMOVAL
	PAVEMENT REMOVAL		SIDEWALK REMOVAL		CURB AND GUTTER REMOVAL



- NOTES**
- SEE IDOT STANDARD DETAIL 606301-04 FOR MEDIAN RAMPED NOSE DIMENSIONS & SLOPES
 - CONTRACTOR SHALL PROTECT AND WORK AROUND ALL EXISTING SIGNS, LIGHT POLES AND FLAG POLES WITHIN AND NEAR THE TEMPORARY EASEMENT
 - SEE ADA DETAIL SHEETS FOR ADA RAMP INFORMATION
 - SEE DRAINAGE & UTILITY SHEETS FOR UTILITY POLE RELOCATION INFORMATION

- EXIST. R.O.W.**
- EXIST. CUMBERLAND AVE. STA. 109+26.73
 - EXIST. BRYN MAWR AVE. STA. 7+98.47
 - EXIST. CUMBERLAND AVE. STA. 99+36.73
 - EXIST. CATALPA AVE.
 - EXIST. BRYN MAWR AVE. STA. 4+45.56
 - EXIST. GREGORY ST.

G:\IDOT\21050_006_CumberlandAve\Drawings\CADD Sheets\0160J14-sh-t-plan_01.dgn