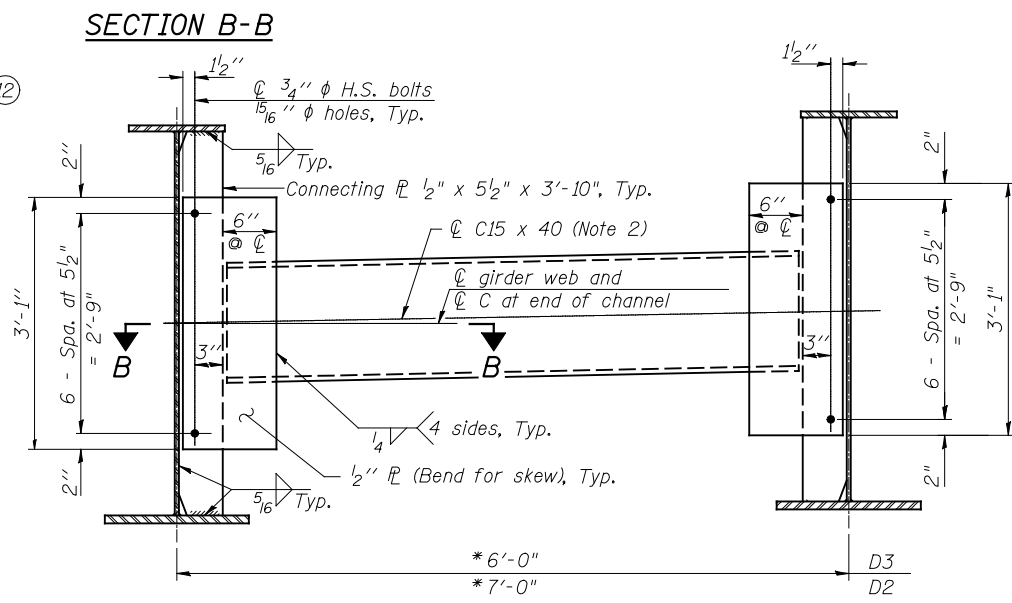
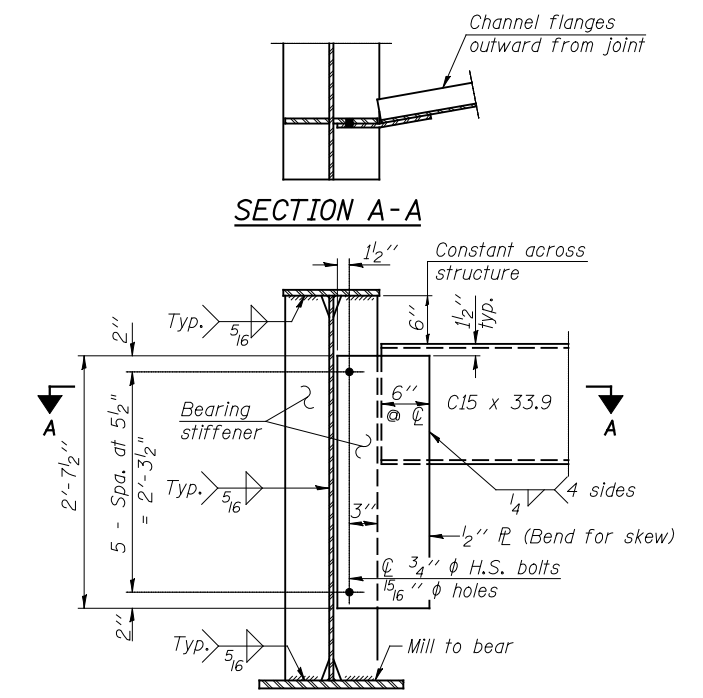


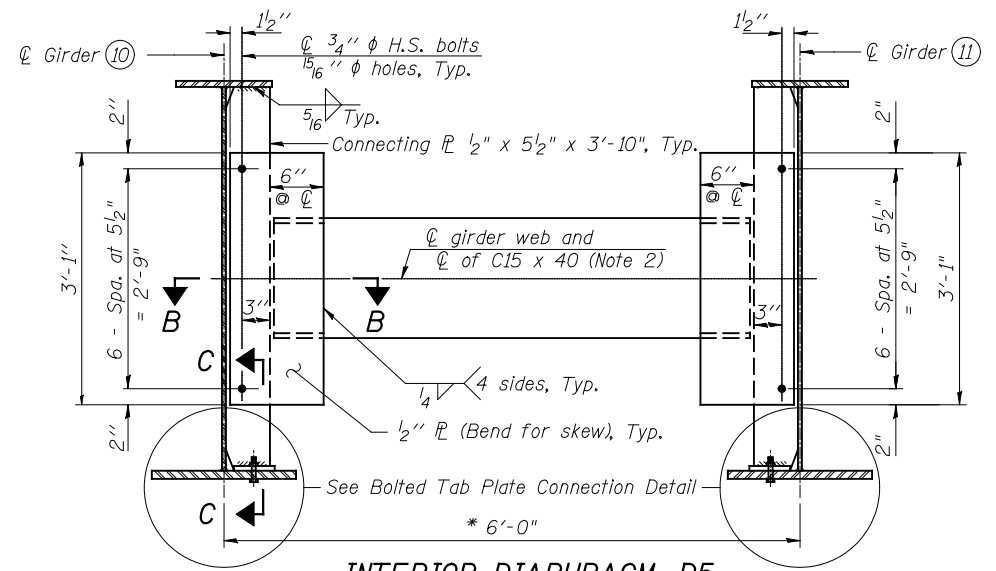
INTERIOR DIAPHRAGM, D4
10 Required



INTERIOR DIAPHRAGM, D2 & D3
224- D2 & 8- D3 Required

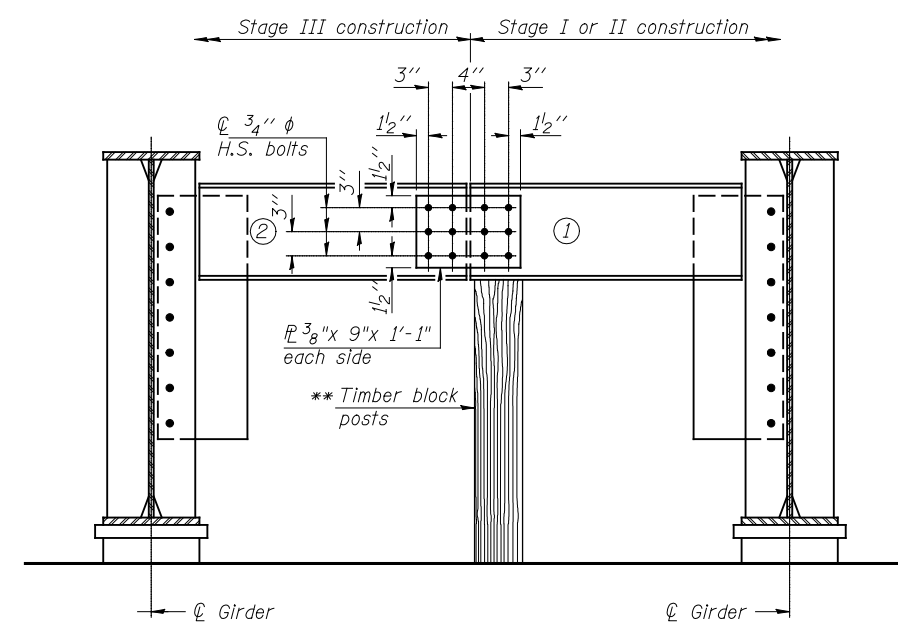


END DIAPHRAGM, D1 & D6
38 Required



INTERIOR DIAPHRAGM, D5
5 Required

* Girder Spacing



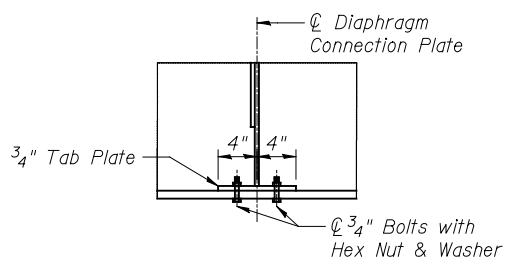
END DIAPHRAGM D6
STAGE CONSTRUCTION SEQUENCE

- Order diaphragm in two sections.
- Attach section ① of diaphragm to girder.
- Place timber block posts between section ① of diaphragm and abutment bearing section.
- Attach section ② of diaphragm to both girder and section ① of diaphragm during stage III construction with splice plates.
- Remove timber block posts.

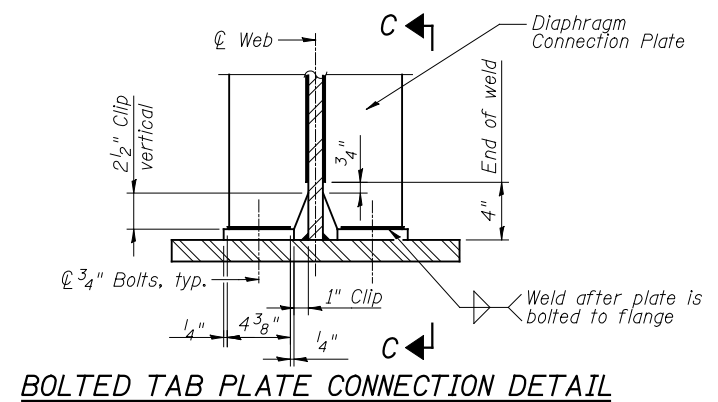
** Cost of Timber Block Posts is included with Structural Steel.

Notes:

- Two hardened washers required for each set of oversized holes.
- Alternate channels C15x50 are permitted to facilitate material acquisition. Calculated weight of structural steel is based on C15x40 sections. The alternate, if utilized, shall be provided at no extra cost to the department.



SECTION C-C



BOLTED TAB PLATE CONNECTION DETAIL