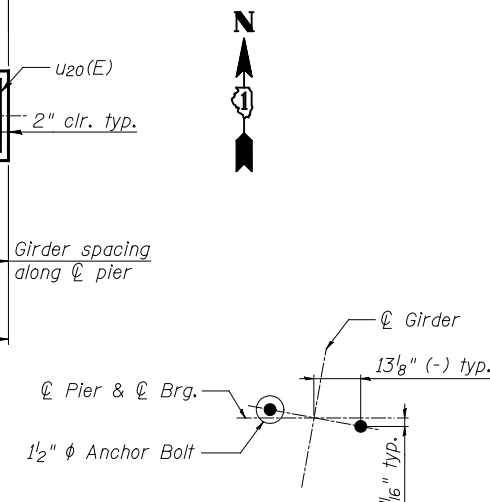


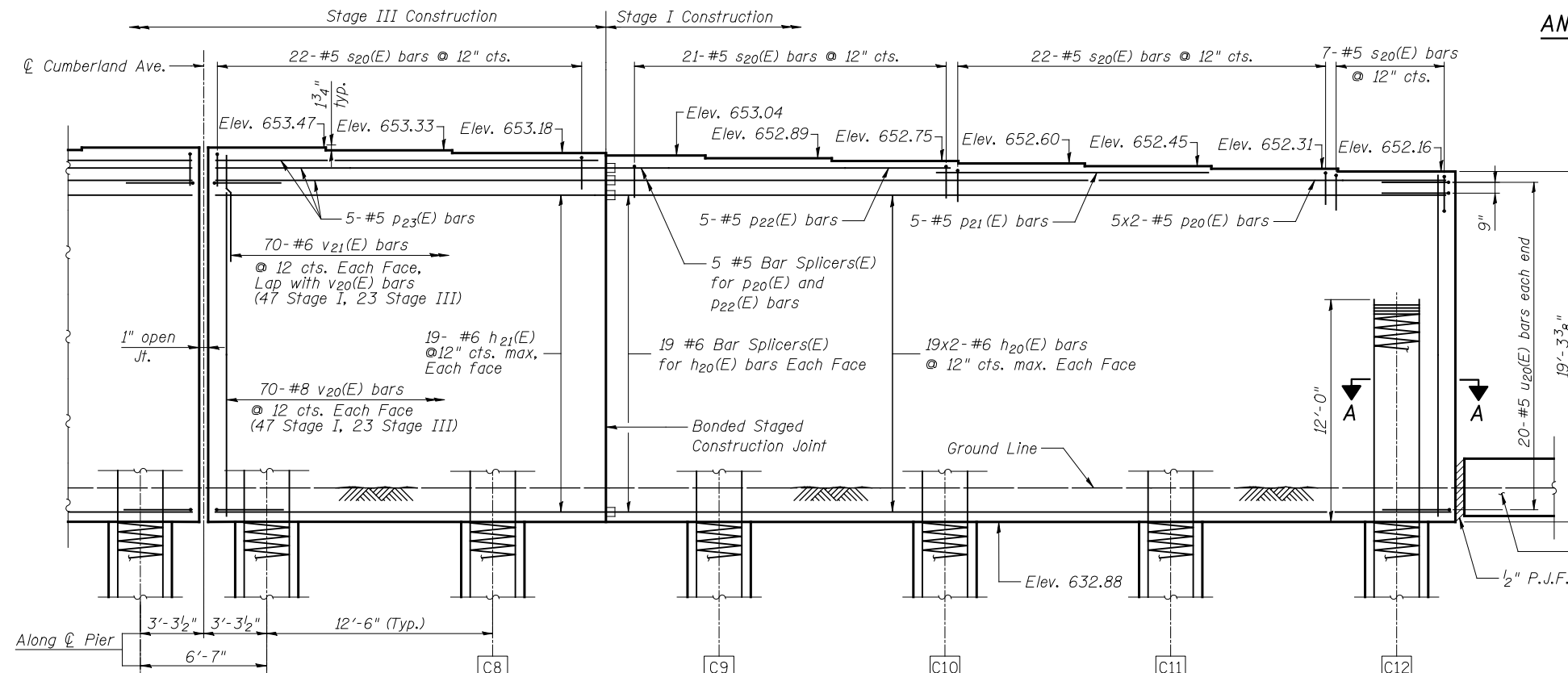
TOP PLAN



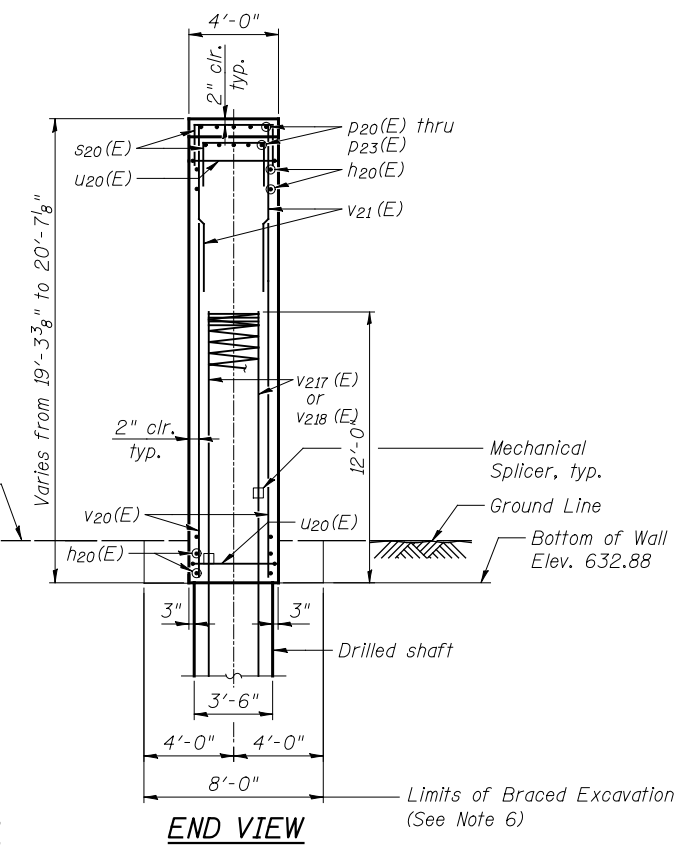
ANCHOR BOLTS LOCATION

BILL OF MATERIAL

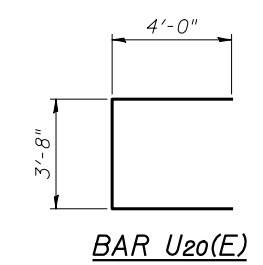
Bar No.	Size	Length	Shape
h20(E)	152	#6	25'- 2"
h21(E)	76	#6	21'- 8"
p20(E)	20	#5	24'- 10"
p21(E)	10	#5	14'- 10"
p22(E)	10	#5	19'- 3"
p23(E)	30	#5	21'- 8"
s20(E)	144	#5	7'- 8"
u20(E)	80	#5	11'- 8"
v20(E)	280	#8	19'- 0"
v21(E)	280	#6	6'- 0"
Concrete Structures		Cu. Yd.	408.2
Reinforcement Bars, Epoxy Coated		Pound	28,630
Concrete Sealer		Sq. Ft.	6261
Braced Excavation		Cu. Yd.	87
Bar Splicers		Each	96



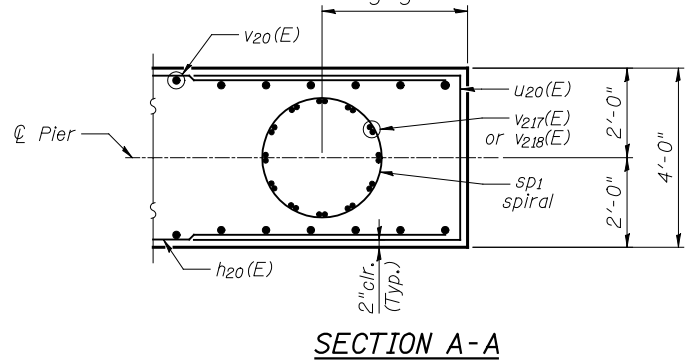
ELEVATION
(Looking North)



END VIEW



BAR S20(E)



SECTION A-A

MIN. BAR LAP

#5 bar = 2'-11"
#6 bar = 3'-6"

Notes:

1. Space reinforcement in cap to miss anchor bolts.
2. Pour steps monolithically with cap.
3. Concrete Sealer shall be applied to the top, sides, and ends of the pier.
4. For Drilled Shaft reinforcement details see sheet S42 of S59.
5. Bars indicated thus 19x2-#6 etc. indicates 19 lines of bars with 2 lengths per line.
6. Braced Excavation shall extend 2'-0" from each end of the pier. See General Note 8 on Sheet S2 of S59.