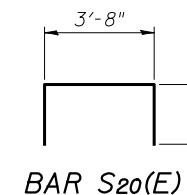
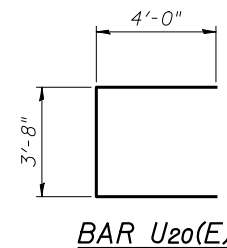
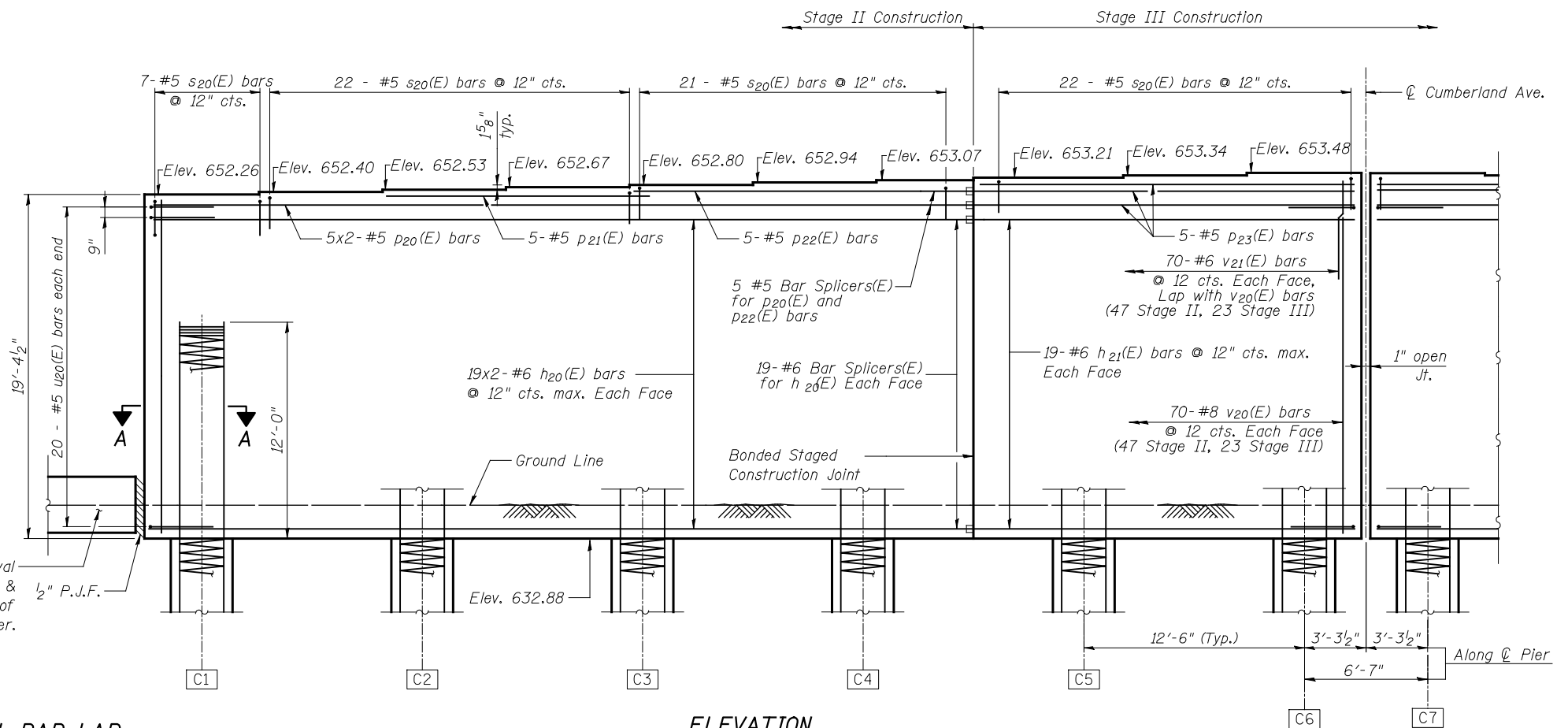


Notes:

1. Space reinforcement in cap to miss anchor bolts.
2. Pour steps monolithically with cap.
3. Concrete Sealer shall be applied to the top, sides, and ends of the pier.
4. For Drilled Shaft reinforcement & details see sheet S42 of S59.
5. Bars indicated thus 19x2-#6 etc. indicates 19 lines of bars with 2 lengths per line.
6. Braced Excavation shall extend 2'-0" from each end of the pier. See General Note 8 on Sheet S2 of S59.
7. For Bill of Material See Sheet S40 of S59.

MIN. BAR LAP

- #5 bar = 2'-11"
- #6 bar = 3'-6"



<p>PATRICK ENGINEERING INC. 4970 VARSITY DRIVE LISLE, IL 60532 patrickengineering.com</p>	USER NAME =	DESIGNED - RDW	REVISED	<p align="center">STATE OF ILLINOIS DEPARTMENT OF TRANSPORTATION</p>	<p align="center">PIER DETAILS II STRUCTURE NO. 016-1250</p>	F.A.U. RTE. =	SECTION	COUNTY	TOTAL SHEETS	SHEET NO.
	PLOT SCALE =	DRAWN - DM	REVISED			2746	1616B	COOK	404	310
	PLOT DATE =	CHECKED - RLD	REVISED			CONTRACT NO. 60J14				
		DATE - 2/18/2013	REVISED			ILLINOIS FED. AID PROJECT				