

F.A.U. RTE.	SECTION	COUNTY	TOTAL SHEETS	SHEET NO.
2689	(3185 & 3186) RS-3	COOK	20	1
		ILLINOIS	CONTRACT NO. 60M30	

STATE OF ILLINOIS
DEPARTMENT OF TRANSPORTATION
DIVISION OF HIGHWAYS

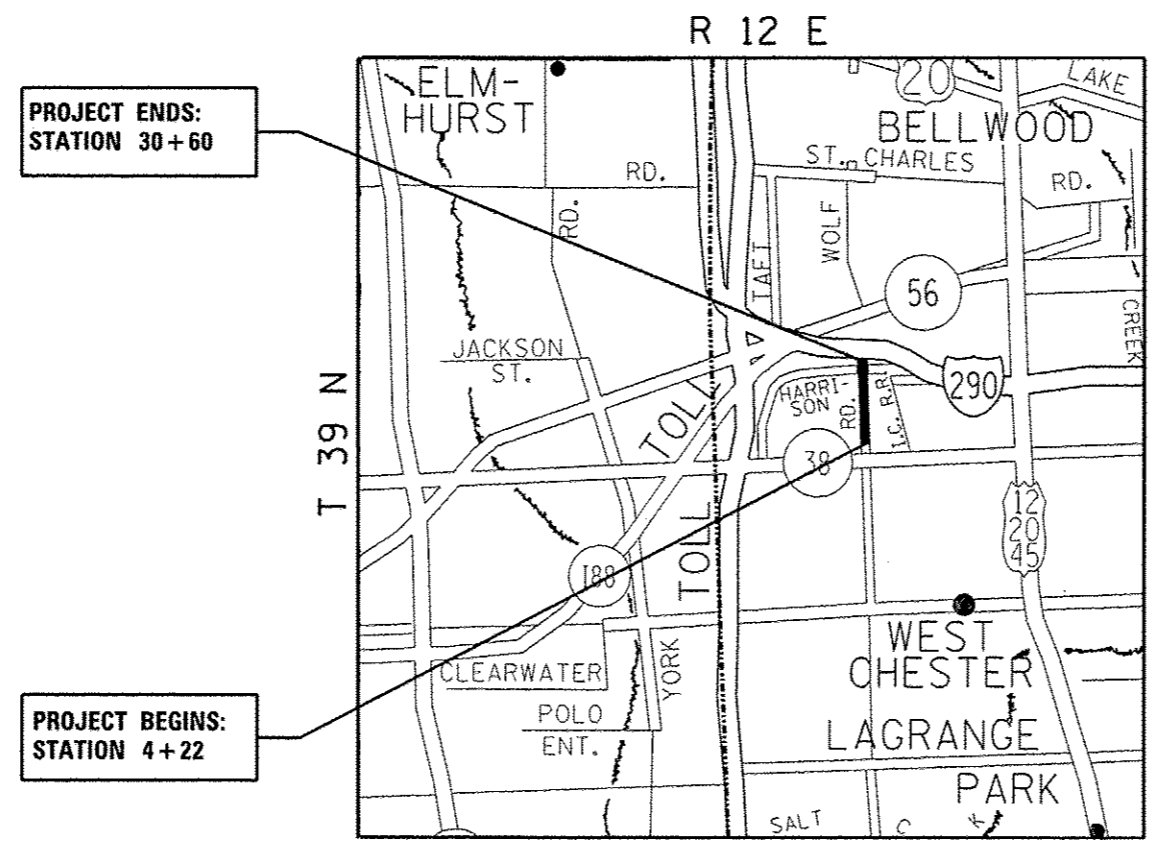
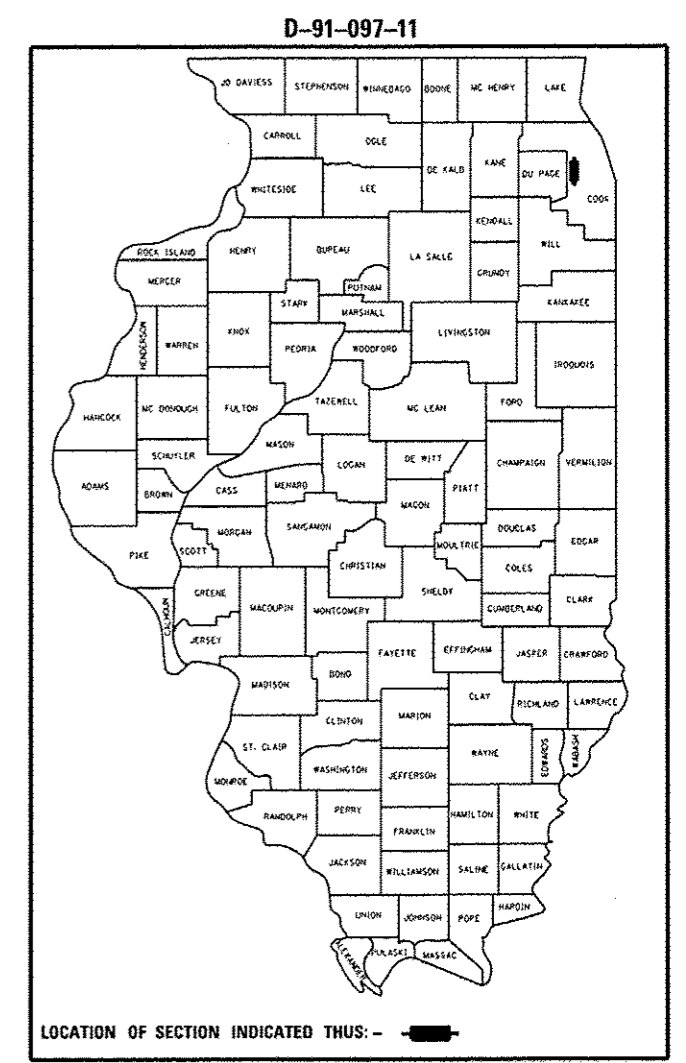
**PROPOSED
HIGHWAY PLANS**

FAU ROUTE 2689: WOLF ROAD
SECTION (3185 & 3186) RS-3
HARRISON STREET TO ILL. 38 (ROOSEVELT ROAD)
RESURFACING (3P)

COOK COUNTY
C-91-097-11

FOR INDEX OF SHEETS, SEE SHEET NO. 2

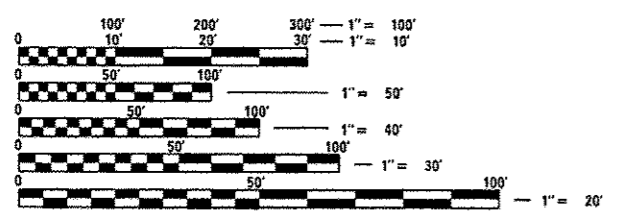
PROJECT IS LOCATED IN THE VILLAGE
OF HILLSIDE



PROJECT ENDS:
STATION 30+60

PROJECT BEGINS:
STATION 4+22

TRAFFIC DATA
2010 ADT = 15,900
POSTED SPEED LIMIT = 35 MPH



FULL SIZE PLANS HAVE BEEN PREPARED USING STANDARD ENGINEERING SCALES. REDUCED SIZED PLANS WILL NOT CONFORM TO STANDARD SCALES. IN MAKING MEASUREMENTS ON REDUCED PLANS, THE ABOVE SCALES MAY BE USED.

J.U.L.I.E.
JOINT UTILITY LOCATION INFORMATION FOR EXCAVATION
1-800-892-0123
OR 811

PROJECT ENGINEER DAN WILGREEN (847) 705-4240
PROJECT MANAGER KEN ENG (847) 705-4247

CONTRACT NO. 60M30

GROSS AND NET LENGTH OF PROJECT = 2,638 FT. = 0.50 MILES

STATE OF ILLINOIS
DEPARTMENT OF TRANSPORTATION
DIVISION OF HIGHWAYS

SUBMITTED February 4, 2013
[Signature]
DEPUTY DIRECTOR OF HIGHWAYS, REGION ENGINEER

March 22, 2013
John D. Baranzoli, P.E.
ENGINEER OF DESIGN AND ENVIRONMENT

March 22, 2013
Omer Osman, P.E.
DIRECTOR OF HIGHWAYS, CHIEF ENGINEER

PRINTED BY THE AUTHORITY
OF THE STATE OF ILLINOIS