

STATE OF ILLINOIS
 DEPARTMENT OF TRANSPORTATION
 DIVISION OF HIGHWAYS

**PROPOSED
 HIGHWAY PLANS**

FAP 358: US 6/ILL 83 (TORRENCE AVE.)
 ILL 83 (SIBLEY BLVD.) TO I-80
 SECTION: 2010-109-RS
 RESURFACING

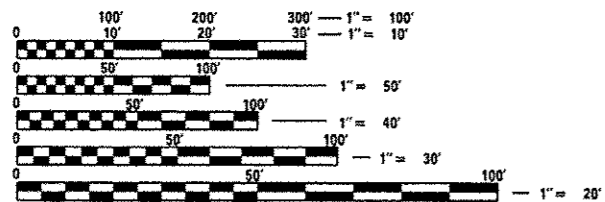
COOK COUNTY
 C-91-103-11

F.A.P. RTE.	SECTION	COUNTY	TOTAL SHEETS	SHEET NO.
358	2010-109-RS	COOK	32	1
FED. ROAD DIST. NO.	ILLINOIS	CONTRACT NO. 60M36		

* 32 + 1 = 33
 D -91-103-11

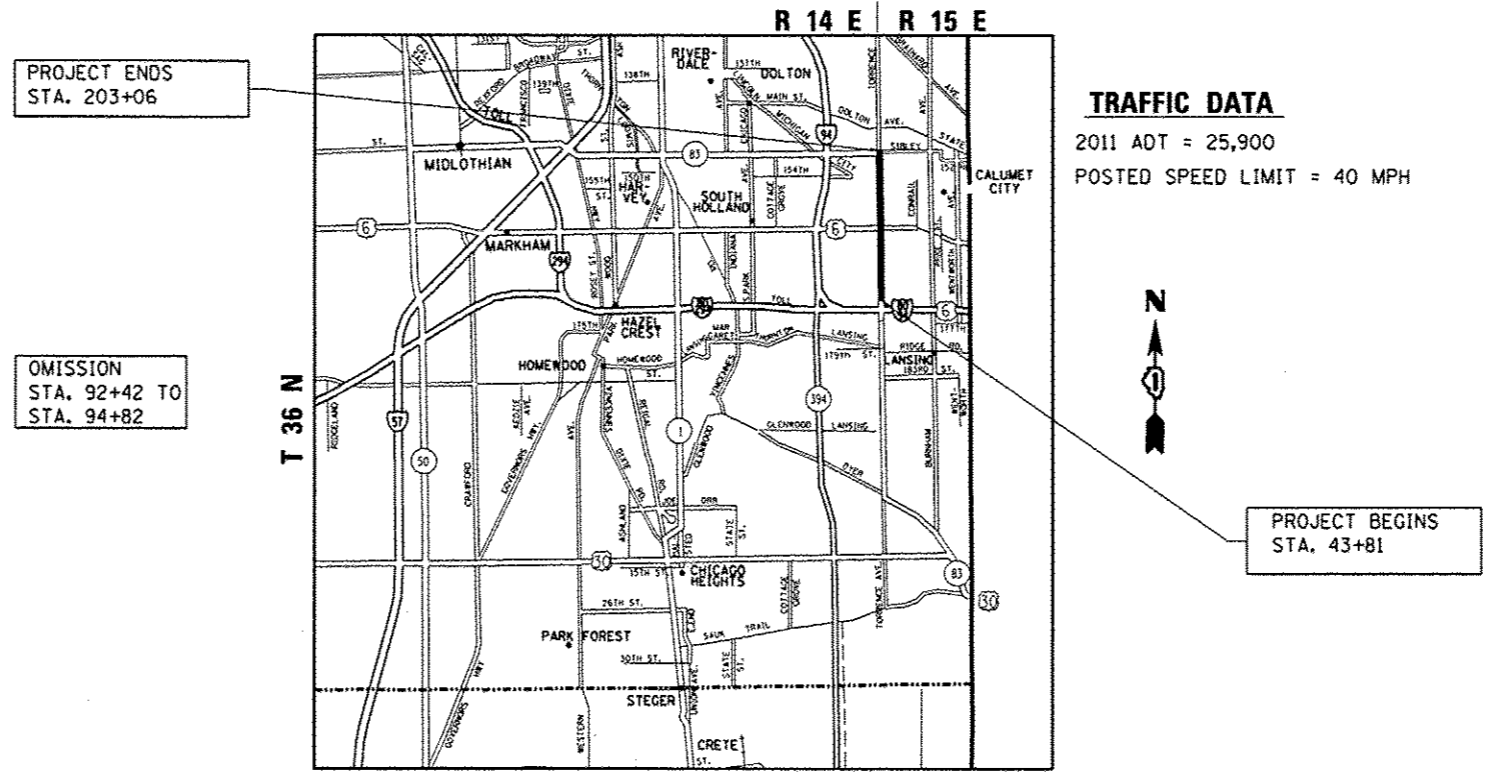
FOR INDEX OF SHEETS, SEE SHEET NO. 2

THE PROJECT IS LOCATED IN THE CITY OF CALUMET AND THE VILLAGE OF LANSING



FULL SIZE PLANS HAVE BEEN PREPARED USING STANDARD ENGINEERING SCALES. REDUCED SIZED PLANS WILL NOT CONFORM TO STANDARD SCALES. IN MAKING MEASUREMENTS ON REDUCED PLANS, THE ABOVE SCALES MAY BE USED.

J.U.L.I.E.
 JOINT UTILITY LOCATION INFORMATION FOR EXCAVATION
 1-800-892-0123
 OR 811



TRAFFIC DATA
 2011 ADT = 25,900
 POSTED SPEED LIMIT = 40 MPH

PROJECT ENGINEER JENPAI CHANG (847) 705-4432
 PROJECT MANAGER KEN ENG (847) 705-4247

CONTRACT NO. 60M36

GROSS LENGTH OF PROJECT = 15,925 LINEAL FEET = 3.02 MILE
 NET LENGTH OF PROJECT = 15,685 LINEAL FEET = 2.97 MILE

STATE OF ILLINOIS
 DEPARTMENT OF TRANSPORTATION
 DIVISION OF HIGHWAYS

SUBMITTED October 10 20 12
John Fontana
 DEPUTY DIRECTOR OF HIGHWAYS, REGION ENGINEER

March 22 20 13
John D. Baranzelli, P.E.
 ENGINEER OF DESIGN AND ENVIRONMENT

March 22 20 13
Omer Osman, P.E.
 DIRECTOR OF HIGHWAYS, CHIEF ENGINEER

**PRINTED BY THE AUTHORITY
 OF THE STATE OF ILLINOIS**