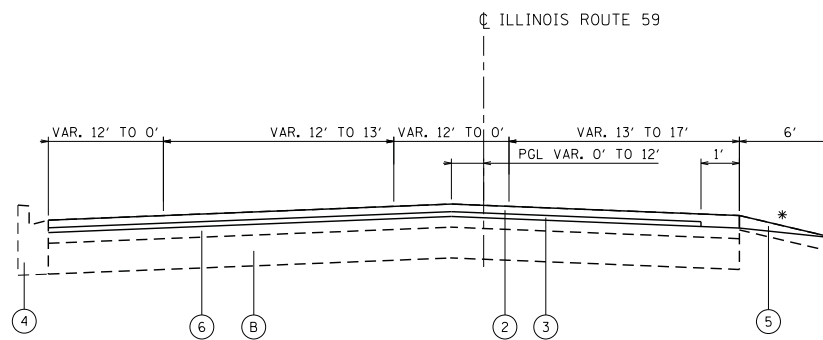


EXISTING TYPICAL SECTION

STA. 256+58 TO STA. 259+59  
 STA. 275+84 TO STA. 281+09  
 STA. 331+92 TO STA. 350+92  
 STA. 376+48 TO STA. 380+80

\* 2'-12" HMA SHOULDER - STA. 256+58 TO STA. 259+59  
 STA. 333+00 TO STA. 342+25  
 COMB CONC CURB & GUTTER - STA. 376+48 TO STA. 380+80



PROPOSED TYPICAL SECTION

STA. 256+58 TO STA. 259+59  
 STA. 275+84 TO STA. 281+09  
 STA. 331+92 TO STA. 350+92  
 STA. 376+48 TO STA. 380+80

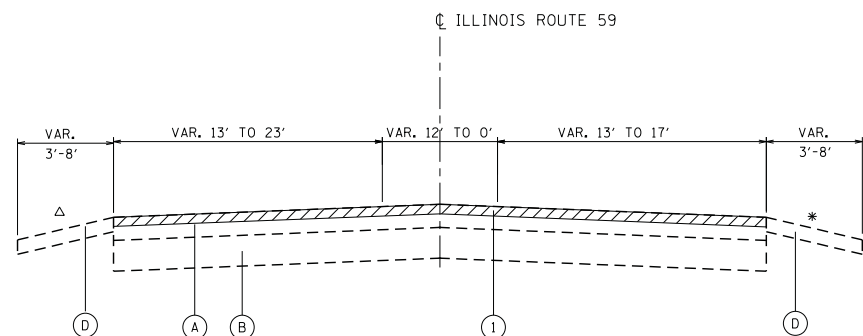
\* 2'-12" HMA SHOULDER - STA. 256+58 TO STA. 259+59  
 STA. 333+00 TO STA. 342+25  
 COMB CONC CURB & GUTTER - STA. 376+48 TO STA. 380+80

EXISTING CONDITIONS

- (A) HOT-MIX ASPHALT PAVEMENT, ±6
- (B) PCC BASE COURSE, ±9"
- (C) COMBINATION CONCRETE CURB AND GUTTER
- (D) AGGREGATE SHOULDERS

PROPOSED IMPROVEMENTS

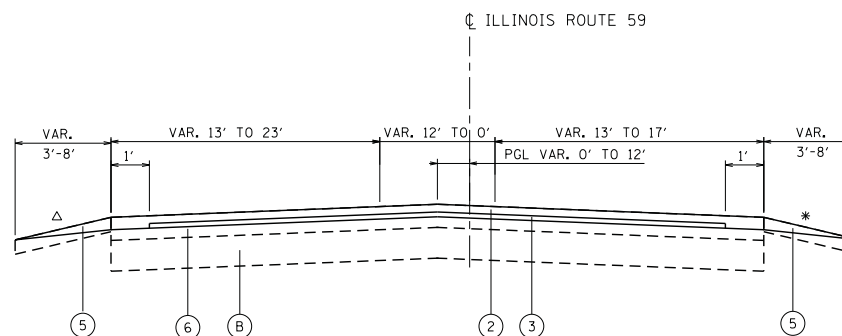
- (1) HOT-MIX ASPHALT SURFACE REMOVAL, 2 1/4"
- (2) HOT-MIX ASPHALT SURFACE COURSE, MIX "D", N70, 1 1/2"
- (3) POLYMERIZED LEVELING BINDER (MACHINE METHOD), IL-4.75, N50, 3/4"
- (4) COMBINATION CONCRETE CURB & GUTTER REMOVAL AND REPLACEMENT (AT LOCATIONS AS DETERMINED BY THE ENGINEER)
- (5) AGGREGATE WEDGE SHOULDER, TYPE B (TAPER 3" TO 1" THICKNESS) - SEE SAFETY EDGE DETAIL
- (6) EXISTING HOT-MIX ASPHALT SURFACE AFTER PROPOSED SURFACE REMOVAL



EXISTING TYPICAL SECTION

STA. 235+49 TO STA. 256+58  
 STA. 259+59 TO STA. 275+84  
 STA. 281+09 TO STA. 331+92  
 STA. 350+92 TO STA. 376+48

\* 4'-12" HMA SHOULDER - STA. 259+59 TO STA. 260+99  
 STA. 281+09 TO STA. 283+67  
 Δ 4'-12" HMA SHOULDER - STA. 255+11 TO STA. 256+58  
 STA. 281+09 TO STA. 283+67



PROPOSED TYPICAL SECTION

STA. 235+49 TO STA. 256+58  
 STA. 259+59 TO STA. 275+84  
 STA. 281+09 TO STA. 331+92  
 STA. 350+92 TO STA. 376+48

\* 4'-12" HMA SHOULDER - STA. 259+59 TO STA. 260+99  
 STA. 281+09 TO STA. 283+67  
 Δ 4'-12" HMA SHOULDER - STA. 255+11 TO STA. 256+58  
 STA. 281+09 TO STA. 283+67

HOT-MIX ASPHALT MIXTURE REQUIREMENTS

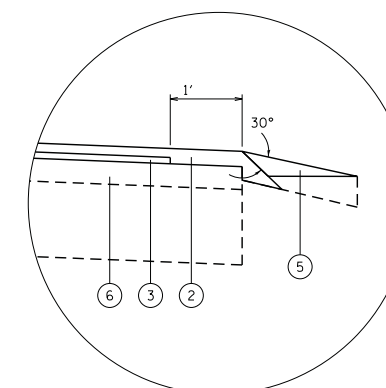
| MIXTURE TYPE   | AIR VOIDS<br>@ 100s |
|--|---------------------|
| PAVEMENT & SHOULDER RESURFACING                            |                     |
| HOT-MIX ASPHALT SURFACE COURSE, MIX "D", N70 (IL-9.5mm)    | 4% @ 70 GYR.        |
| POLYMERIZED LEVELING BINDER (MACHINE METHOD), IL-4.75, N50 | 3.5% @ 50 GYR.      |
| PATCHING   |                     |
| CLASS D PATCHES (HMA BINDER, IL-19mm)                      | 4% @ 70 GYR.        |
| HMA REPLACEMENT OVER PATCHES (HMA BINDER IL-19mm)          | 4% @ 70 GYR.        |

THE UNIT WEIGHT TO CALCULATE ALL HMA SURFACE MIXTURE QUANTITIES IS 112 LBS/SO YD/IN

THE "AC TYPE" FOR POLYMERIZED HMA MIXES SHALL BE "SBS/SBR PG 76-22" AND FOR NON-POLYMERIZED HMA THE "AC TYPE" SHALL BE "PG 64-22" UNLESS MODIFIED BY DISTRICT ONE SPECIAL PROVISIONS.

FOR USE OF RECYCLED MATERIALS SEE SPECIAL PROVISIONS.

NOTE:  
 THE CONTRACTOR SHALL MILL FIRST BEFORE PATCHING. SEE DISTRICT 1  
 DETAIL PAVEMENT PATCHING FOR HMA SURFACED PAVEMENT.



RESURFACING TREATMENT AT SHOULDER AND SAFETY EDGE DETAILS

N.T.S.

NOTE: INCREASED THICKNESS OF HMA SURFACE COURSE ALONG SHOULDER EDGE SHALL BE INCLUDED IN THE COST OF HOT-MIX ASPHALT SURFACE COURSE, MIX "D", N70

COMPANY NAME: HRGreen  
 PROJECT CONTACT: HRGreen.com  
 10/24/2012 9:45:37 AM  
 DATE PLOTTED: 10/24/2012 9:45:37 AM  
 FILE NAME: 10/24/2012 9:45:37 AM  
 PLOT DRIVER: pafplot  
 PEN TABLE: standard-trans.tbl



|                        |                   |           |
|------------------------|-------------------|-----------|
| USER NAME = spenel     | DESIGNED - CMH    | REVISED - |
|                        | DRAWN - SMP       | REVISED - |
| PLOT SCALE = N.T.S.    | CHECKED - TEH     | REVISED - |
| PLOT DATE = 10/24/2012 | DATE - 10/24/2012 | REVISED - |

STATE OF ILLINOIS  
 DEPARTMENT OF TRANSPORTATION

TYPICAL SECTIONS  
 ILLINOIS ROUTE 59 (HIGHWOODS DR. TO IL RTE. 173)

SCALE: N.T.S. SHEET NO. 1 OF 1 SHEETS STA. BEGIN TO STA. END

|                     |           |                           |              |           |
|---------------------|-----------|---------------------------|--------------|-----------|
| F.A. RTE.           | SECTION   | COUNTY                    | TOTAL SHEETS | SHEET NO. |
| 104                 | 105W-RS-1 | LAKE                      | 26           | 6         |
| CONTRACT NO.        |           |                           | 60N46        |           |
| FED. ROAD DIST. NO. |           | ILLINOIS FED. AID PROJECT |              |           |