

F.A.U. RTE.	SECTION	COUNTY	TOTAL SHEETS	SHEET NO.
1427	3205B-RS-1	COOK	22	1
ILLINOIS			CONTRACT NO. 60N67	

STATE OF ILLINOIS
DEPARTMENT OF TRANSPORTATION
DIVISION OF HIGHWAYS

**PROPOSED
HIGHWAY PLANS**

F.A.U. ROUTE 1427 : HARRISON STREET
SECTION 3205B-RS-1
IL. 38 (ROOSEVELT ROAD) TO WOLF ROAD
RESURFACING (3P)

COOK COUNTY
C-91-337-11

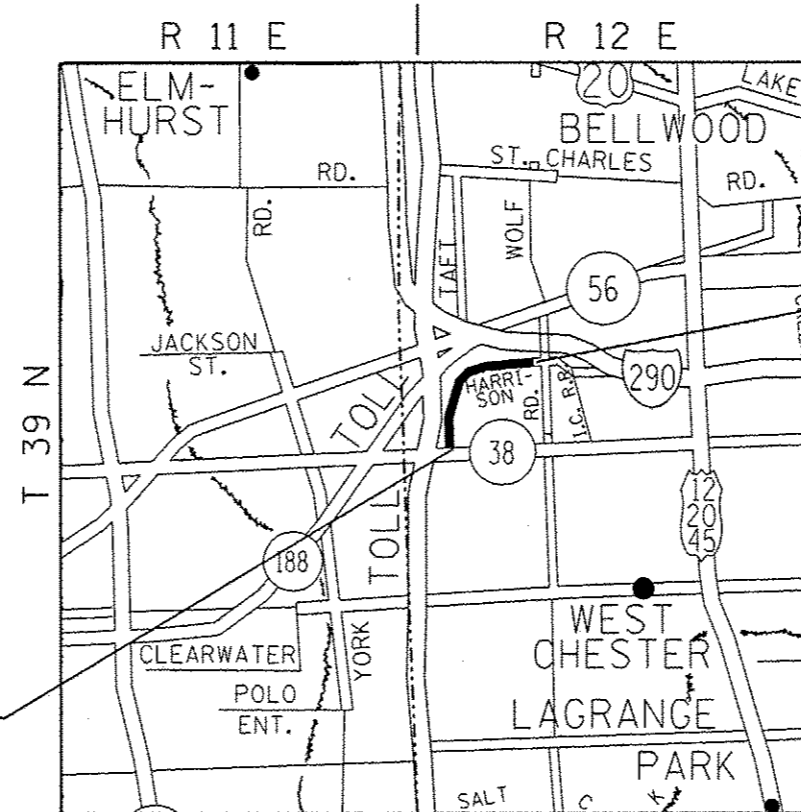
D-91-337-11



LOCATION OF SECTION INDICATED THUS: —

FOR INDEX OF SHEETS, SEE SHEET NO. 2

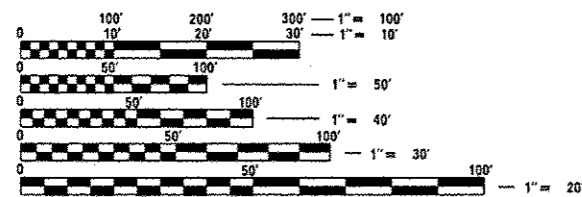
PROJECT IS LOCATED IN THE VILLAGE
OF HILLSIDE



PROJECT ENDS:
STATION 60+04.6

TRAFFIC DATA

2011 ADT = 1,700
POSTED SPEED LIMIT = 35 MPH



FULL SIZE PLANS HAVE BEEN PREPARED USING STANDARD
ENGINEERING SCALES. REDUCED SIZED PLANS WILL NOT
CONFORM TO STANDARD SCALES. IN MAKING MEASUREMENTS
ON REDUCED PLANS, THE ABOVE SCALES MAY BE USED.

J.U.L.I.E.
JOINT UTILITY LOCATION INFORMATION FOR EXCAVATION
1-800-892-0123
OR 811

PROJECT BEGINS:
STATION 0+77

PROVISO TOWNSHIP

PROJECT ENGINEER: DAN WILGREEN (847) 705-4240
PROJECT MANAGER: KEN ENG (847) 705-4247

GROSS AND NET LENGTH OF PROJECT = 5,927.6 FT. = 1.12 MILES

CONTRACT NO. 60N67

STATE OF ILLINOIS
DEPARTMENT OF TRANSPORTATION
DIVISION OF HIGHWAYS

SUBMITTED February 21, 2013
John Fraternelli, PE
DEPUTY DIRECTOR OF HIGHWAYS, REGION ENGINEER

March 22, 2013
John D. Baranzoli, PE, LE
ENGINEER OF DESIGN AND ENVIRONMENT

March 22, 2013
Omer Osman, PE, LE
DIRECTOR OF HIGHWAYS, CHIEF ENGINEER

PRINTED BY THE AUTHORITY
OF THE STATE OF ILLINOIS