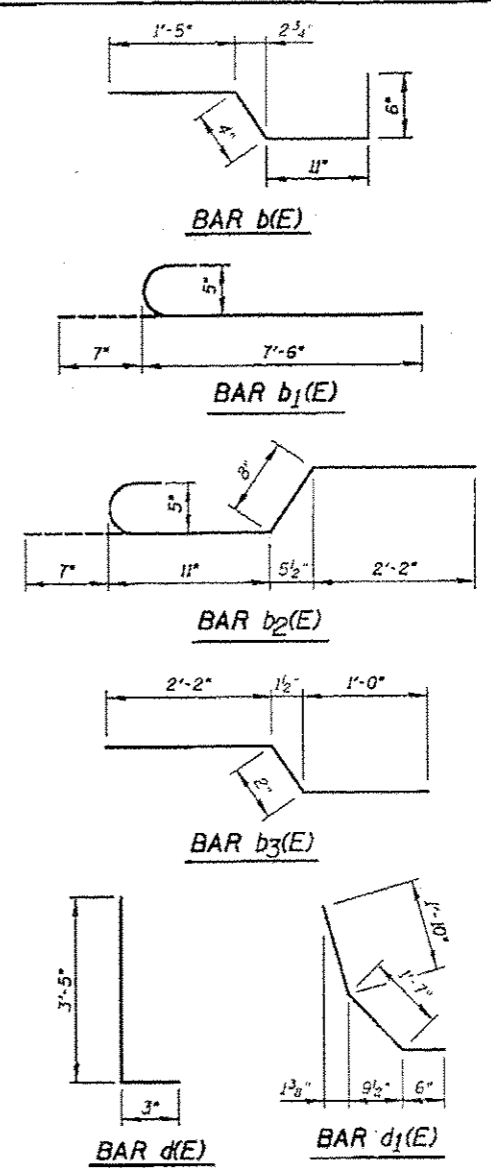
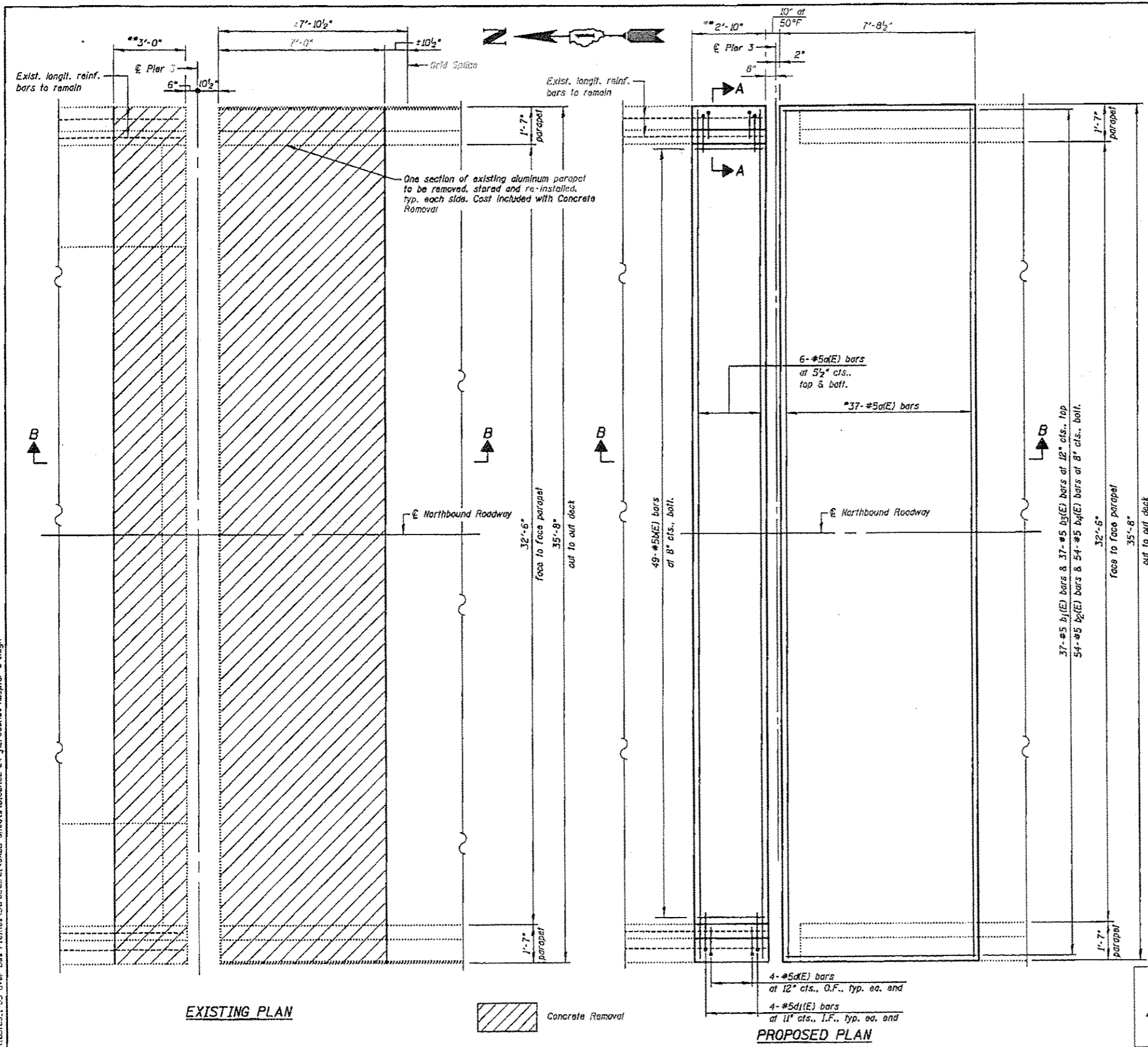


FILE NAME = I:\183183.1-65 over Das Planes\Structural\CADD Sheets\AD16862-24-J-reconst-86.ppt-3-1.dgn



**BILL OF MATERIAL**

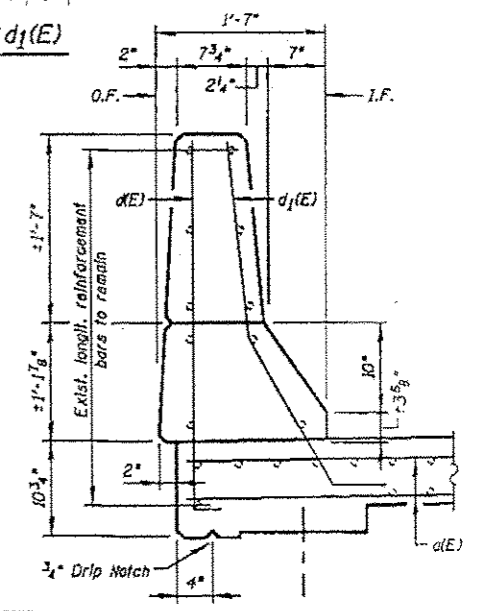
Bar	No.	Size	Length	Shape
d(E)	49	#5	35'-0"	—
b(E)	49	#5	3'-2"	—
b1(E)	37	#5	8'-1"	—
b2(E)	54	#5	4'-4"	—
b3(E)	37	#5	3'-4"	—
b4(E)	54	#5	8'-4"	—
d(E)	8	#5	3'-8"	L
d1(E)	8	#5	3'-11"	—
Reinforcement Bars, Epoxy Coated		Pound	3,170	
Concrete Removal		Cu Yd	12.4	
Concrete Superstructure		Cu Yd	12.0	

\*Epoxy grouted reinf. bars according to Article 584 of the Standard Specifications. 9" min.

Notes:  
See Sht. S25 for Section B-B

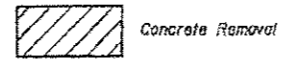
**LEGEND:**  
O.F. = Outside Face  
I.F. = Inside Face

\*17 d(E) bars at 5 1/2" cts., top, 17 d(E) bars at 5 1/2" cts., bott. & 3 d(E) bars in haunch as shown in Section B-B  
\*\*Length of block out, width of joint and number of reinforcement bars may vary as required by Joint Manufacturer



EXISTING PLAN

PROPOSED PLAN



**CHRISTIAN-ROGE & ASSOCIATES, INC.**

USER NAME = 1807	DESIGNED - J.C.N./B.N.S./J.W.	REVISED -
PLLOT SCALE = 50.0000 / 1" = 10'	CHECKED - B.N.S./J.W.	REVISED -
PLLOT DATE = 3/19/2013	DRAWN - P.M.	REVISED -
	DATE - MARCH 20, 2013	REVISED -

STATE OF ILLINOIS  
DEPARTMENT OF TRANSPORTATION

EXPANSION JOINT RECONSTRUCTION AT PIER 3-NORTHBOUND-I  
STRUCTURE NO. 099-0009

SHEET NO. 524 OF 560 SHEETS

F.A.I. RTE.	SECTION	COUNTY	TOTAL SHEETS	SHEET NO.
55	87B, D-BR-1	WILL	106	63
ILLINOIS FED. AID PROJECT			CONTRACT NO. 60R62	