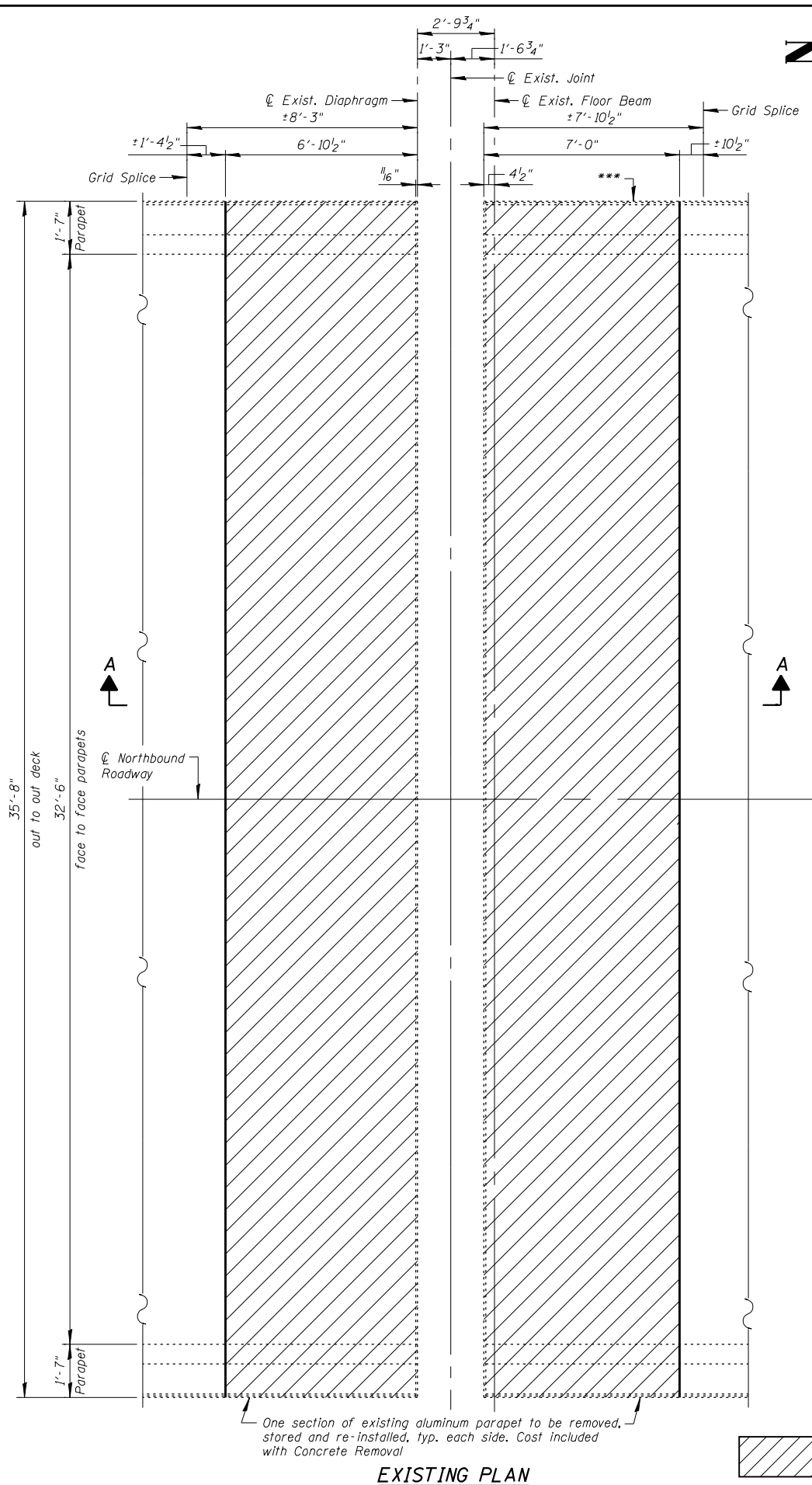
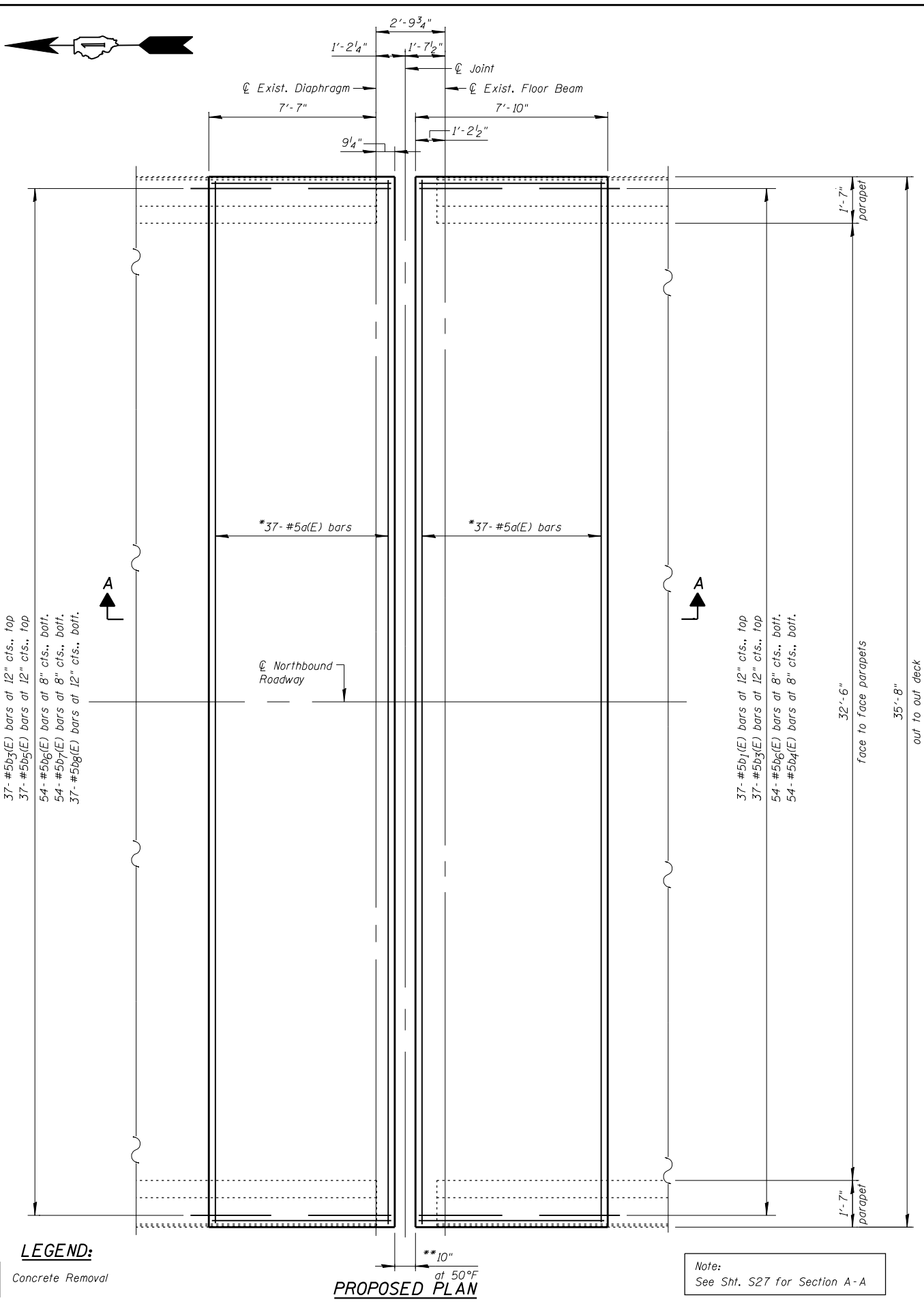


FILE NAME = I:\103103.1-55 over des planes\structure\cedd sheets\160R62-25-jt-reconst-NB.L13-1.dgn



EXISTING PLAN

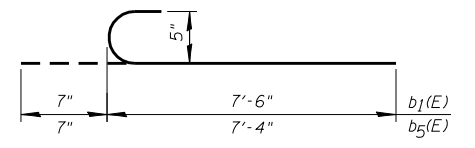


PROPOSED PLAN

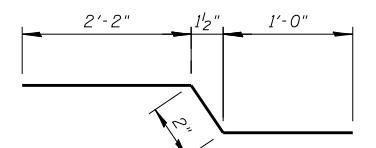
LEGEND:
 Concrete Removal

BILL OF MATERIAL

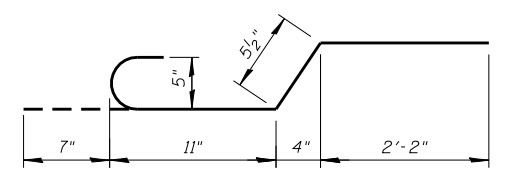
Bar	No.	Size	Length	Shape	
a(E)	74	#5	15'-10"	—	
a ₂ (E)	12	#5	6'-0"	—	
b ₁ (E)	37	#5	8'-1"	⌋	
b ₃ (E)	74	#5	3'-4"	⌋	
b ₄ (E)	54	#5	8'-4"	⌋	
b ₅ (E)	37	#5	7'-11"	⌋	
b ₆ (E)	108	#5	4'-2"	⌋	
b ₇ (E)	54	#5	8'-2"	⌋	
b ₈ (E)	37	#5	4'-4"	⌋	
Reinforcement Bars, Epoxy Coated				Pound	3,740
Concrete Removal				Cu Yd	13.1
Concrete Superstructure				Cu Yd	15.6



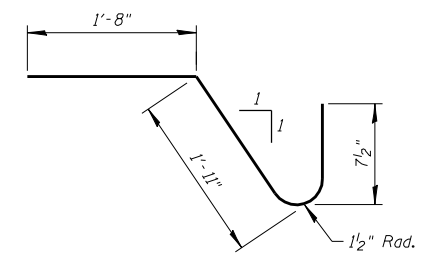
BARS b₁(E) & b₅(E)



BAR b₃(E)



BAR b₆(E)



BAR b₈(E)

*17 a(E) bars at 5 1/2" cts., top,
 17 a(E) bars at 5 1/2" cts., bott. &
 3 a(E) bars in haunch as shown in Section B-B

**Length of block out, width of joint and number of reinforcement bars may vary as required by Joint Manufacturer

***1/2" ⌀ to be cut at the removal line, typ.

Note:
 See Sht. S27 for Section A-A