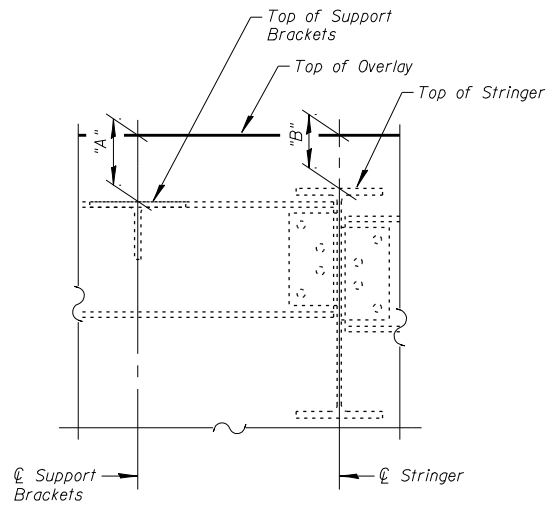


NORTH SIDE OF JOINT

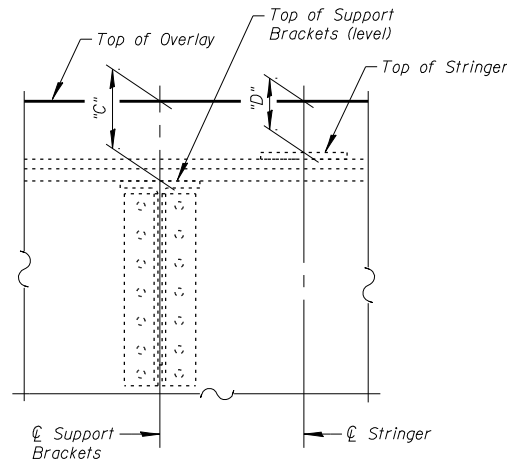
Stringer or Support	Dim. "A" at Support	Dim. "B" at Bearing
1	-	5 ³ / ₁₆ "
A	9 ¹ / ₂ "	-
2	-	6 ³ / ₁₆ "
B	9 ¹ / ₄ "	-
3	-	8 ¹ / ₈ "
C	9 ⁷ / ₈ "	-
D	10 ³ / ₁₆ "	-
E	10 ⁹ / ₁₆ "	-
4	-	7 ⁷ / ₈ "
F	9 ³ / ₈ "	-
G	9 ³ / ₄ "	-
H	10 ¹ / ₁₆ "	-
J	10 ³ / ₈ "	-
5	-	8 ³ / ₄ "

SOUTH SIDE OF JOINT

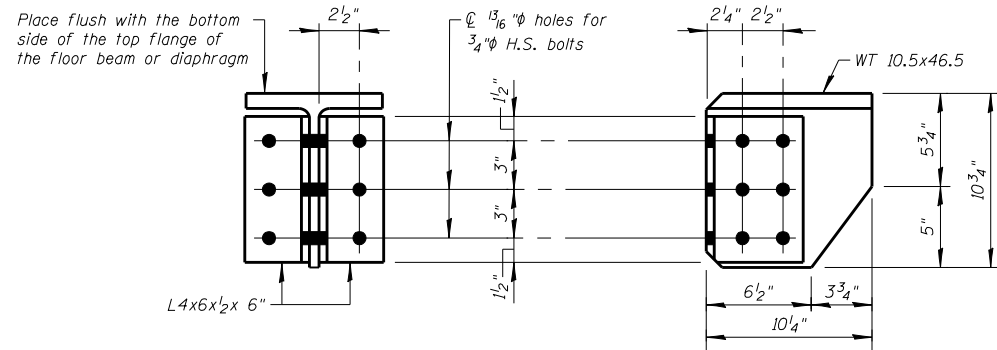
Stringer or Support	Dim. "C" at Support	Dim. "D" at Bearing
1	-	5 ³ / ₁₆ "
A	9"	-
2	-	6 ³ / ₁₆ "
B	9 ¹ / ₄ "	-
3	-	8 ¹ / ₈ "
C	9 ¹ / ₁₆ "	-
D	10"	-
E	10 ⁵ / ₁₆ "	-
F	10 ⁵ / ₈ "	-
4	-	7 ⁷ / ₈ "
G	10 ⁷ / ₈ "	-
H	11 ¹ / ₄ "	-
J	11 ⁵ / ₈ "	-
K	12"	-
5	-	8 ³ / ₄ "



TYPICAL
(At North side of joint)

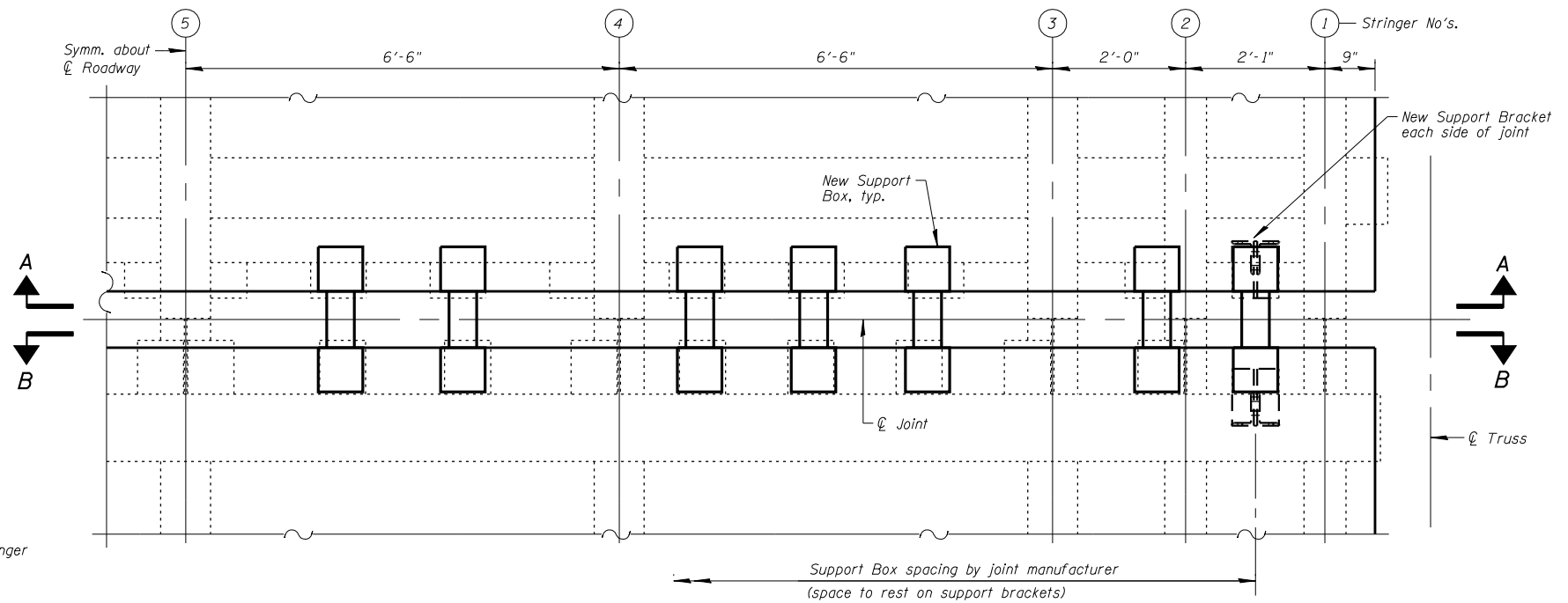


TYPICAL
(At South side of joint)

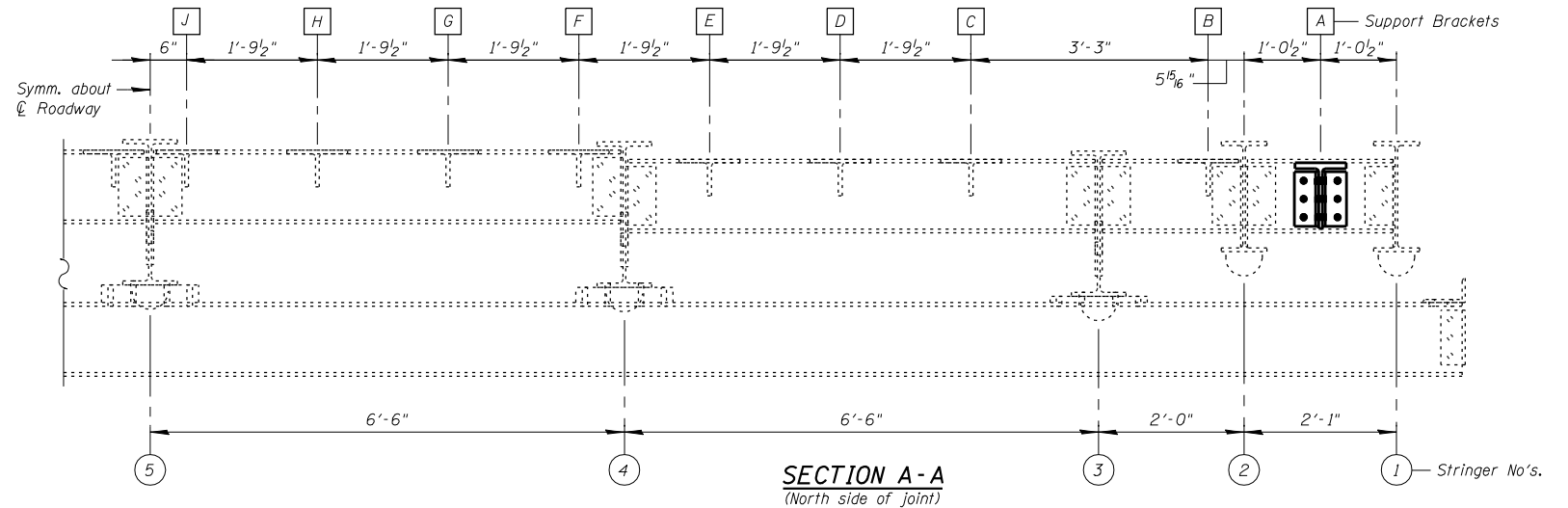


NEW SUPPORT BRACKET DETAILS
(Cost included with Modular Expansion Joint 6")

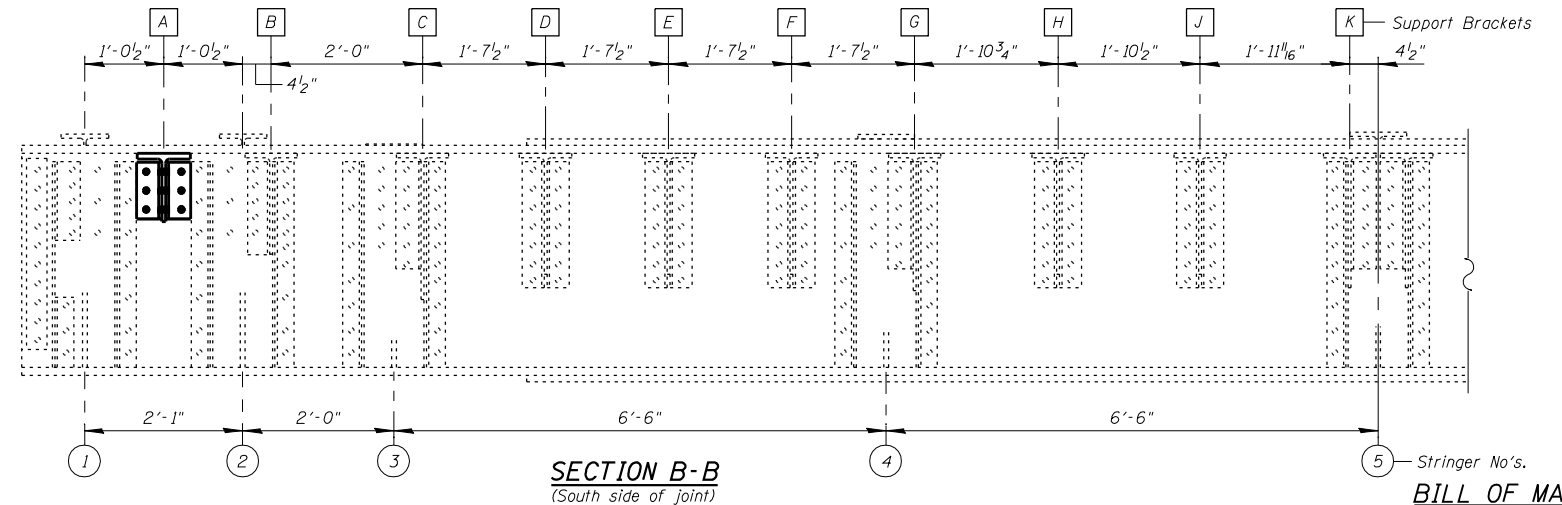
Notes:
 Modular Expansion Joint shall be designed according to the latest ASTM Specifications for HS20 Loading with 30% Impact and for minimum movement of ±3" (Total of 6"). See Special Provisions for Modular Expansion Joint.
 Joint shall be fabricated and installed according to the manufacturer's recommendations and as approved by the Engineer. Support brackets may be added as required by Modular Expansion Joint Fabricator. See New Support Bracket Details. Cost included with Modular Expansion Joint.
 Joint shall be fabricated to conform to the existing cross slopes. See Sht's. S3 & S4 for details. Match existing conditions.
 Cost of all hardware and installation of steel bearing shim plates and additional reinforcement required to anchor the joint to the slab shall be included with "Modular Expansion Joint".
 The Inorganic zinc rich primer / acrylic / acrylic paint system shall be used for shop and field painting of new structural steel except no top coat required in non-exposed areas. The color of the acrylic finish coat shall be Gray, Munsell No. 5B 7/1. See Special Provision for "Cleaning and Painting New Metal Structures".
 Modular Expansion Joints shall be assembled in their final relative position with the ends in place for shop inspection and acceptance.



PARTIAL PLAN AT L13



SECTION A-A
(North side of joint)

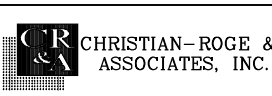


SECTION B-B
(South side of joint)

BILL OF MATERIAL

DESCRIPTION	UNIT	TOTAL
Modular Expansion Joint 6"	Foot	36

FILE NAME = it:103103.1+55 over des planes\structure\1\cead sheets\160R62-31-modular-exp-jt-NB-L13.dgn



USER NAME = IDOT	DESIGNED - J.C.N./B.N.S./J.W.	REVISED -
PLOT SCALE = 100.0000' / IN.	CHECKED - B.N.S./J.W.	REVISED -
PLOT DATE = 1/18/2013	DRAWN - F.M.	REVISED -
	DATE - JANUARY 16, 2013	REVISED -

STATE OF ILLINOIS
DEPARTMENT OF TRANSPORTATION

MODULAR EXPANSION JOINT DETAILS AT L13-NORTHBOUND
STRUCTURE NO. 099-0009

SHEET NO. S31 OF S60 SHEETS

F.A.I. RTE. 55	SECTION 87B, D-BR-1	COUNTY WILL	TOTAL SHEETS 106	SHEET NO. 70
CONTRACT NO. 60R62				
ILLINOIS FED. AID PROJECT				