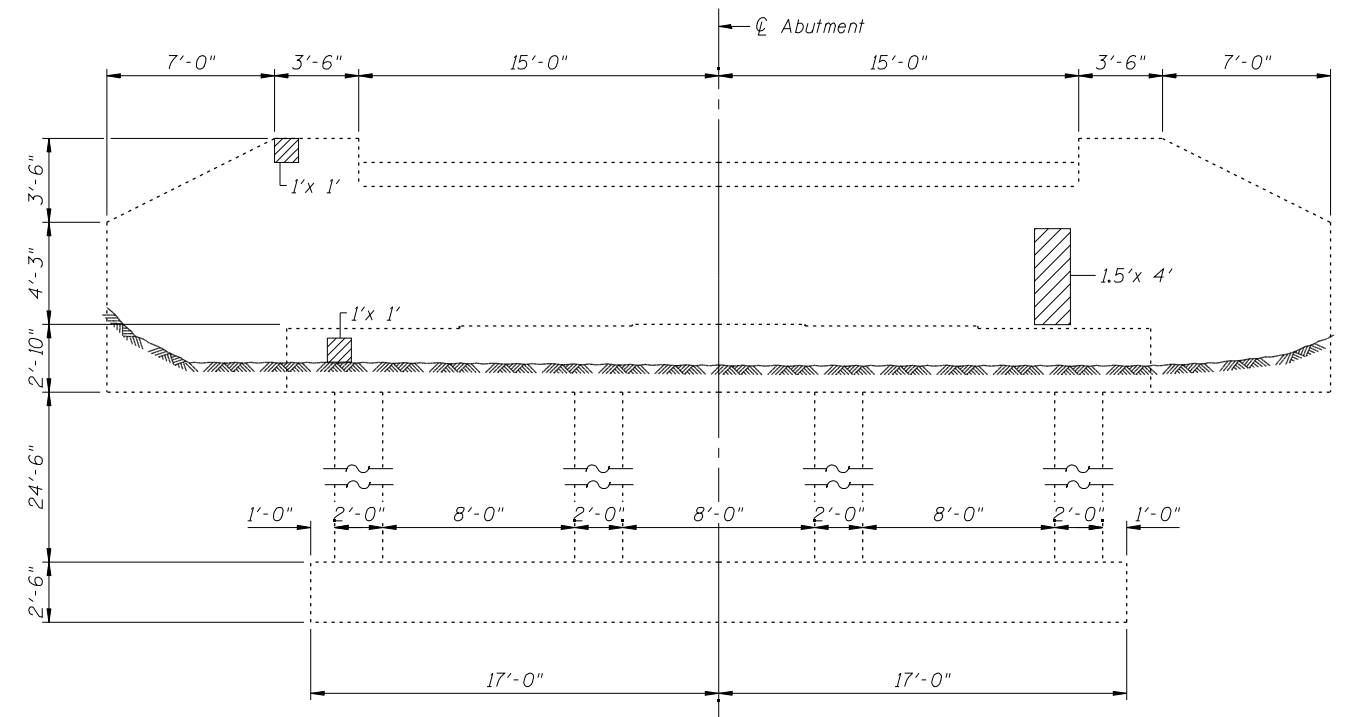



SOUTH ABUTMENT ELEVATION



NORTH ABUTMENT ELEVATION

LEGEND:

 Structural Repair of Concrete
(Depth Equal to or Less Than 5 Inches)

BILL OF MATERIAL

DESCRIPTION	UNIT	TOTAL
Structural Repair of Concrete (Depth Equal to or Less Than 5 Inches)	Sq Ft	27

FILE NAME = I:\103103.1+55 over des planes\structural\cadd sheets\160R62-53-NB_Abut-repairs.dgn



USER NAME = IDOT	DESIGNED - J.C.N./B.N.S./J.W.	REVISED -
PLOT SCALE = 0:2.0000 '1' / IN.	CHECKED - B.N.S./J.W.	REVISED -
PLOT DATE = 1/18/2013	DRAWN - F.M.	REVISED -
	DATE - JANUARY 16, 2013	REVISED -

**STATE OF ILLINOIS
DEPARTMENT OF TRANSPORTATION**

**NORTH & SOUTH ABUTMENT REPAIRS - NORTHBOUND
STRUCTURE NO. 099-0009**

SHEET NO. S53 OF S60 SHEETS

F.A.I. RTE.	SECTION	COUNTY	TOTAL SHEETS	SHEET NO.
55	87B, D-BR-I	WILL	106	89
CONTRACT NO. 60R62				
ILLINOIS FED. AID PROJECT				