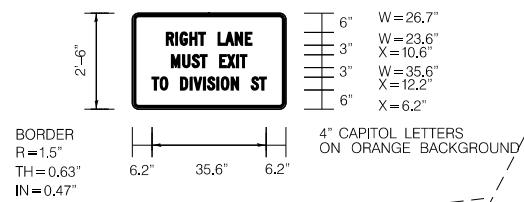
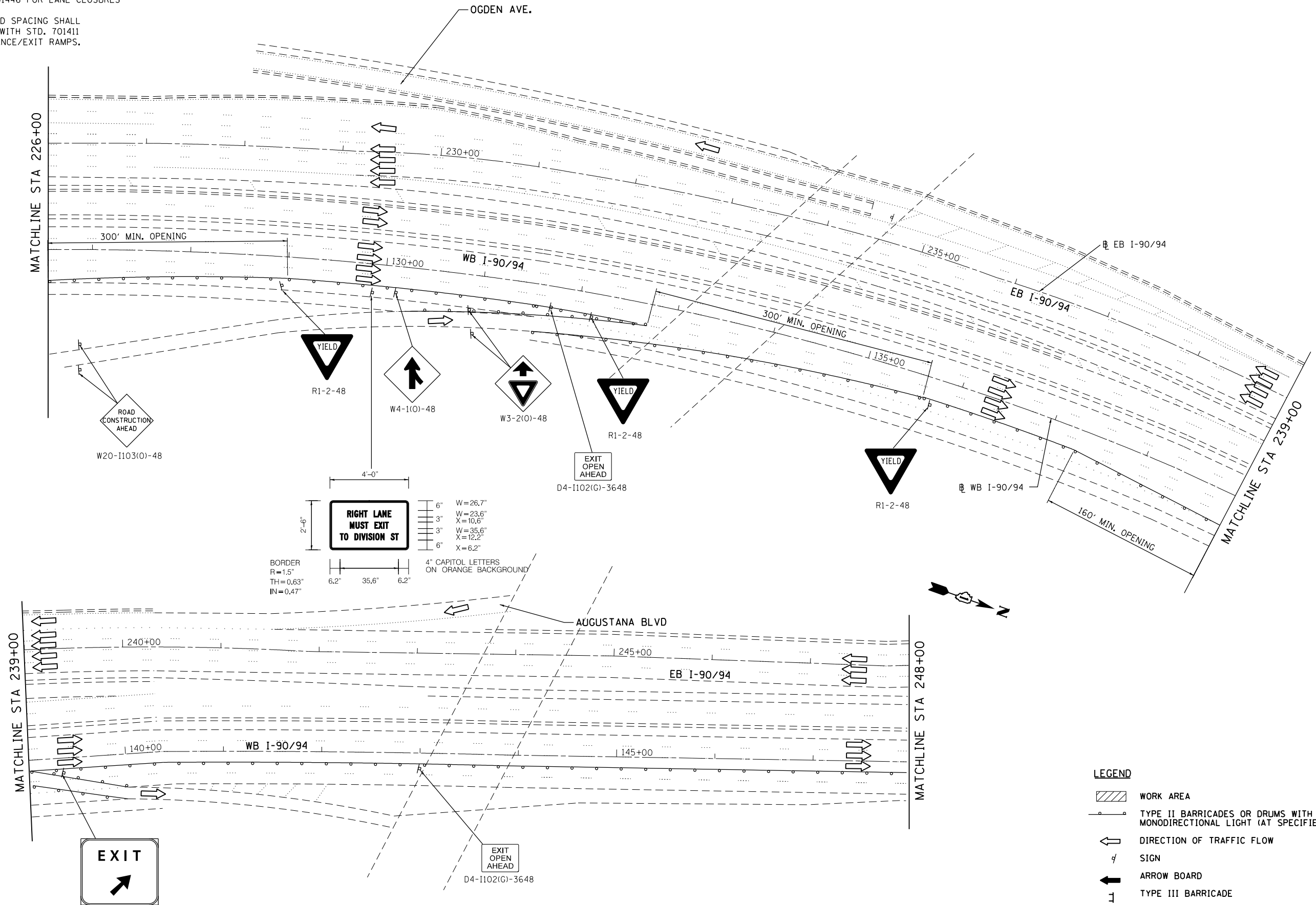
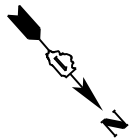


NOTES:

- SIGN PLACEMENT AND SPACING SHALL BE IN ACCORDANCE WITH STD. 701400 AND STD. 701401/701446 FOR LANE CLOSURES
- SIGN PLACEMENT AND SPACING SHALL BE IN ACCORDANCE WITH STD. 701411 AT AFFECTED ENTRANCE/EXIT RAMP.



- LEGEND**
- WORK AREA
 - TYPE II BARRICADES OR DRUMS WITH STEADY BURN MONODIRECTIONAL LIGHT (AT SPECIFIED SPACING)
 - DIRECTION OF TRAFFIC FLOW
 - SIGN
 - ARROW BOARD
 - TYPE III BARRICADE

COLLINS ENGINEERS
 123 N. Rocker Dr.
 Suite 900
 Chicago, IL 60606
 Tel: (312) 704-9300
 Fax: (312) 704-9300
 www.collinseng.com
ILLINOIS PROFESSIONAL DESIGN FIRM LICENSE NO. 104-088993

USER NAME =	DESIGNED - RC	REVISED -
DRAWN - RC	REVISED -	
CHECKED - MR	REVISED -	
DATE - DECEMBER 2012	REVISED -	

**STATE OF ILLINOIS
 DEPARTMENT OF TRANSPORTATION**

**STAGING AND TRAFFIC CONTROL
 I-90/94
 STAGE III**

SCALE: SHEET OF SHEETS STA. TO STA.

F.A.I. RTE. 90/94	SECTION 2012-055BR	COUNTY COOK	TOTAL SHEETS 107	SHEET NO. 96
CONTRACT NO. 60V58				ILLINOIS FED. AID PROJECT