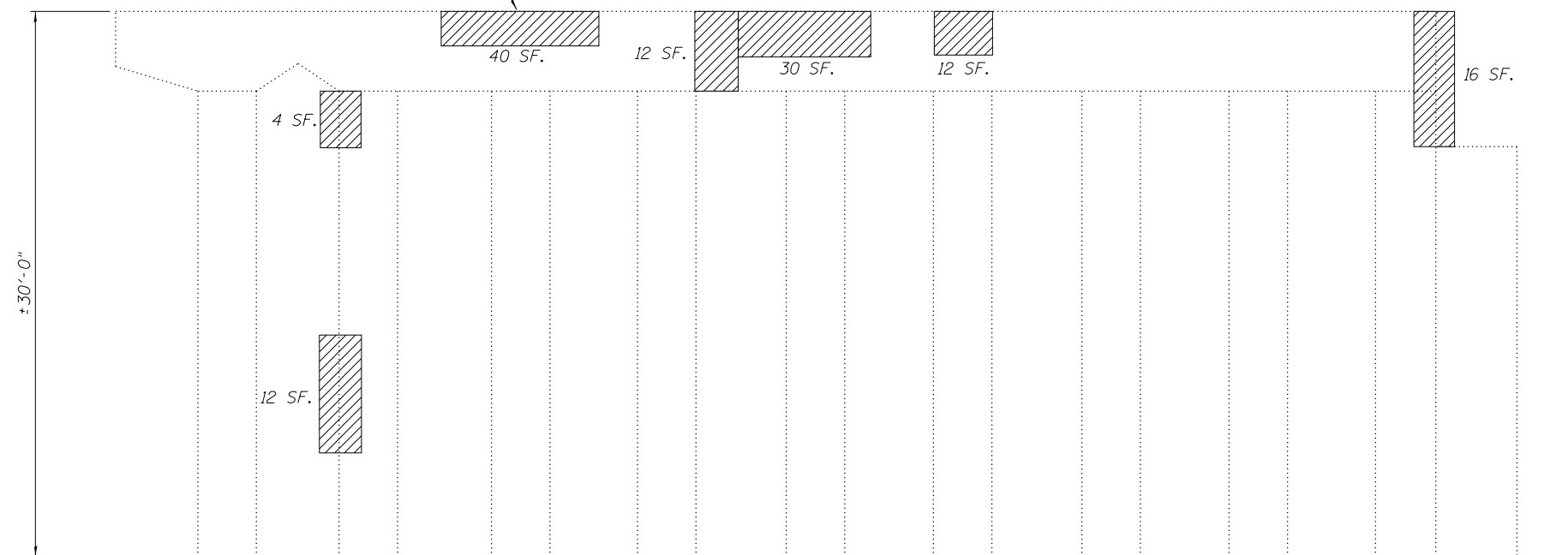


**PIER 14 SOUTH ELEVATION**

(Looking North)

Temporary Shoring and Cribbing to Facilitate Concrete Repair (2 EA, Beams 8 and 9)



**PIER 14 NORTH ELEVATION**

(Looking South)

*Note:*  
Beams are numbered East to West.

PIER 14 GIRDER REACTION TABLE		
	Span 14	Span 15
R <sub>DL</sub> (k)	46.1	46.1
R <sub>SDL</sub> (k)	13.7	13.7
R <sub>LL</sub> (k)	37.6	37.6
R <sub>T</sub> (k)	9.8	9.8
R <sub>Total</sub> (k)	107.2	107.2

*Note:*  
Due to variable girder type, spacing, and span, reactions provided are a general indication for the loads within the indicated span. Contractor shall verify loading at each shoring location. Cost included in pay item 'Temporary Shoring and Cribbing.'

**BILL OF MATERIAL**

SYMBOL	ITEM	UNIT	QUANTITY
	Structural Repair of Concrete, (Depth Equal To or Less Than 5")	Sq. Ft.	548
	Temporary Shoring and Cribbing	Each	7