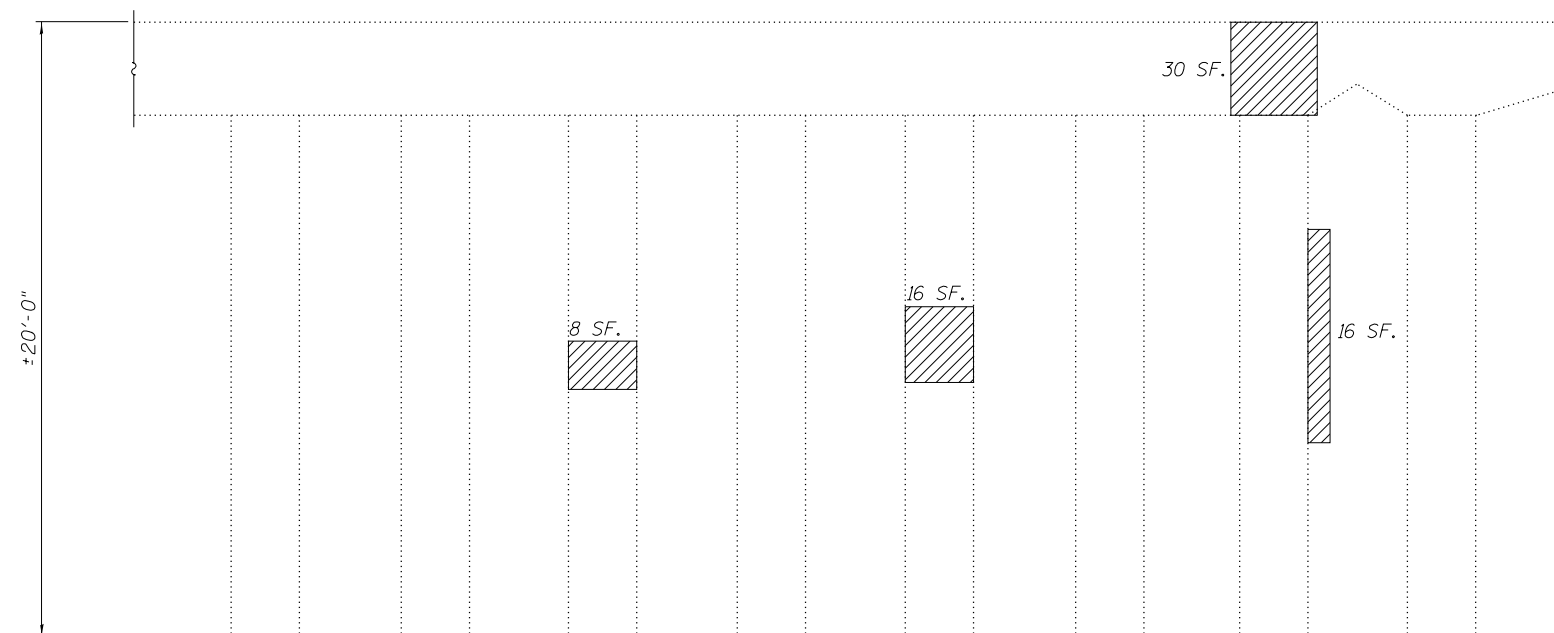


Note:
Beams are numbered East to West.



PIER 24 GIRDER REACTION TABLE			
		Span 24	Span 25
R _{DL}	(k)	55.0	39.1
R _{SDL}	(k)	15.4	12.8
R _{LL}	(k)	37.6	46.1
R _T	(k)	9.1	13.2
R _{Total}	(k)	117.1	111.2

Note:
Reactions provided are for the maximum girder spacing and length within the span indicated. Contractor shall verify loading at each shoring location. Cost included in pay item 'Temporary Shoring and Cribbing.'

PIER 24 NORTH ELEVATION
(Looking South)

BILL OF MATERIAL

SYMBOL	ITEM	UNIT	QUANTITY
	Structural Repair of Concrete, (Depth Equal To or Less Than 5")	Sq. Ft.	86
	Structural Repair of Concrete, (Depth Greater Than 5")	Sq. Ft.	160
	Temporary Shoring and Cribbing	Each	4

USER NAME =	DESIGNED - AMS	REVISED -
DRAWN - DR	REVISOR -	
PLOT SCALE =	CHECKED - JMH	REVISED -
PLOT DATE =	DATE - DECEMBER 2012	REVISED -

F.A.I. RTE.	SECTION	COUNTY	TOTAL SHEETS	SHEET NO.
90/94	2012-055BR	COOK	107	95
CONTRACT NO. 60V58			ILLINOIS FED. AID PROJECT	