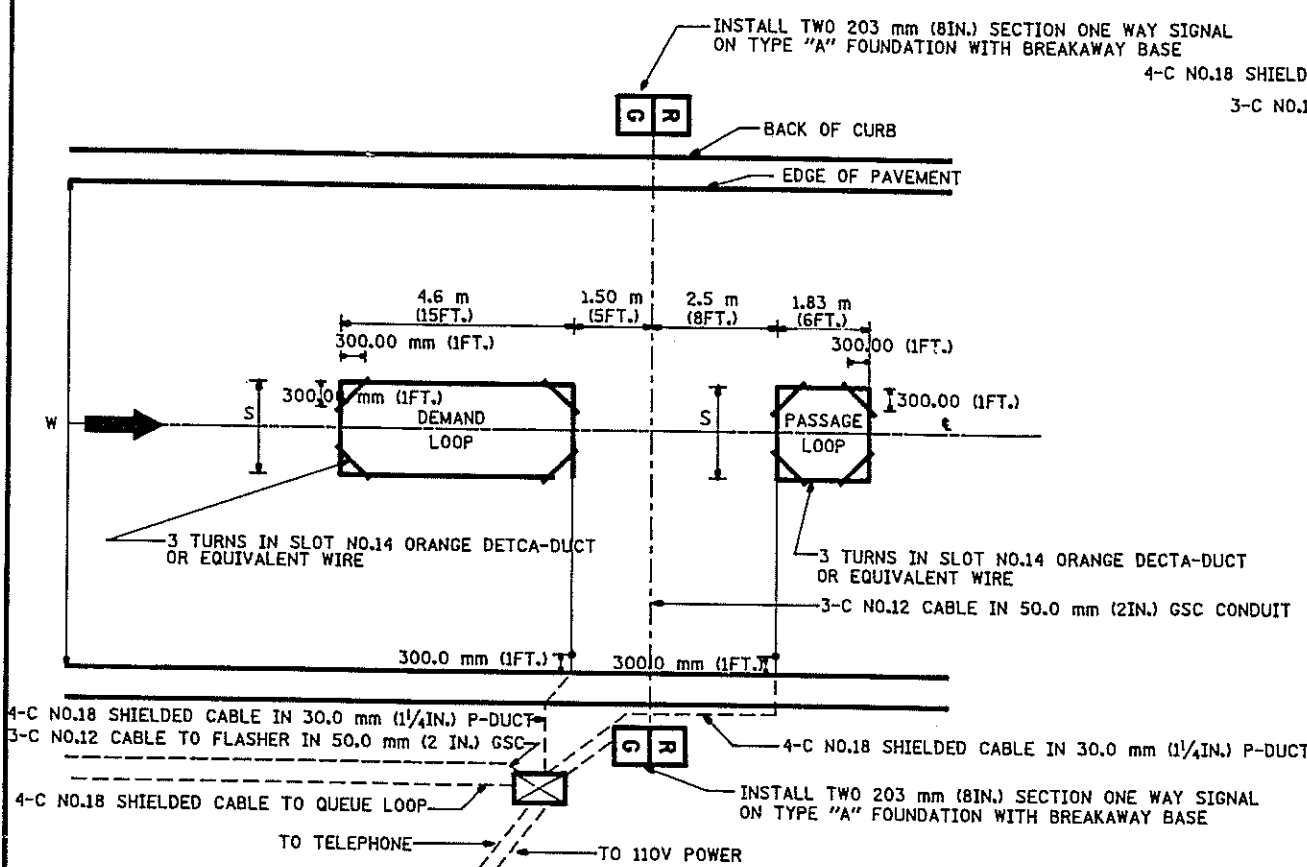
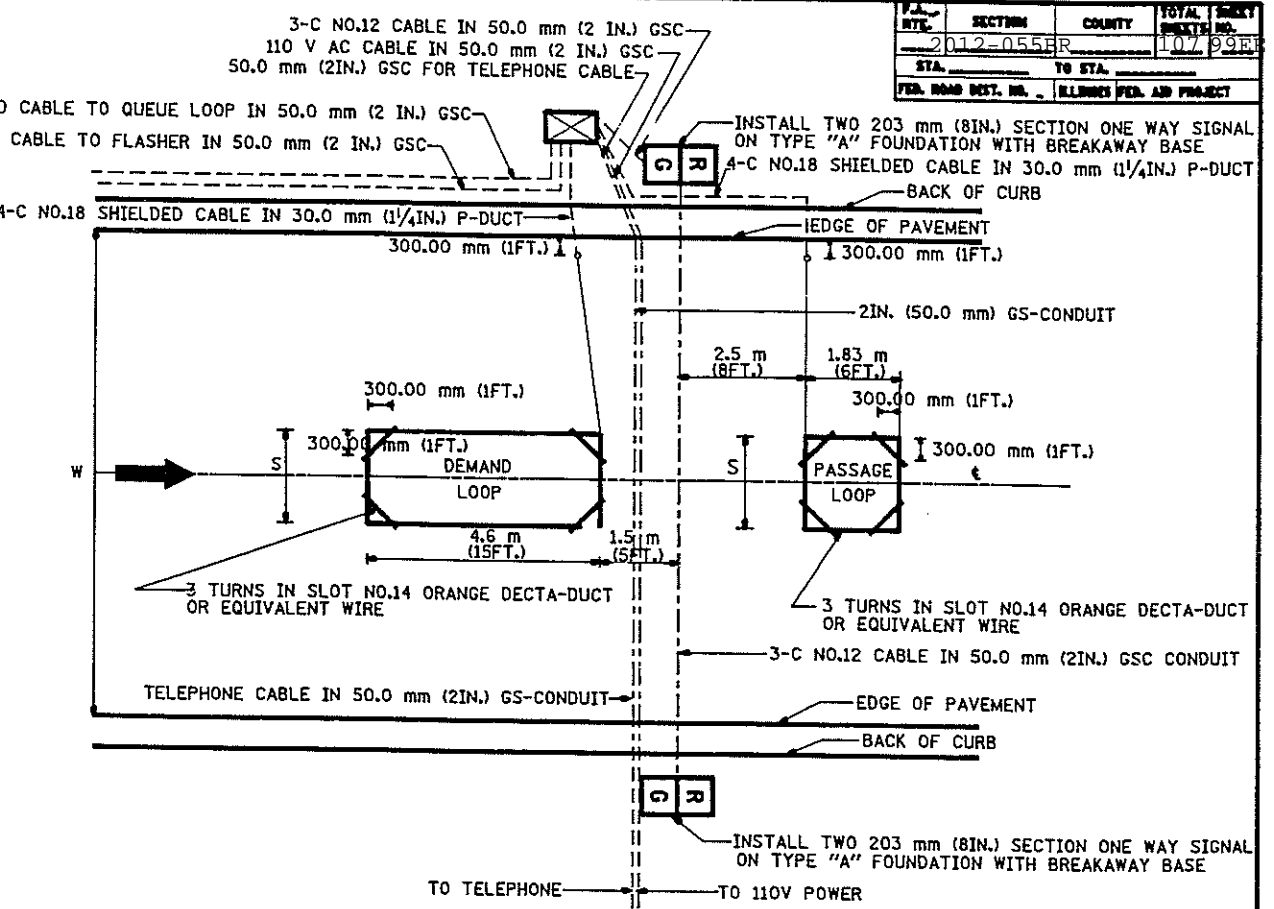


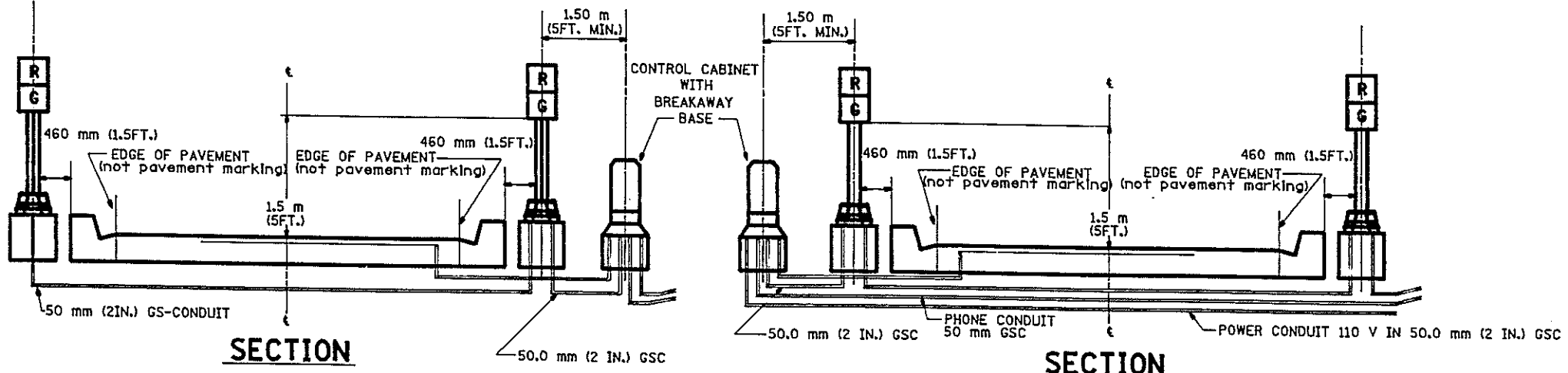
F.S. RITE	SECTION	COUNTY	TOTAL SHEETS
2012-055R			107
STA.	TO STA.		
FED. ROAD DIST. NO.	ILLINOIS FED. AID PROJECT		



TYPICAL SIGNAL AND LOOP LAYOUT (TYPE I)



TYPICAL SIGNAL AND LOOP LAYOUT (TYPE II)



SECTION

SECTION

TABLE 1

WIDTH (W)	WIDTH (S)
3.7 m (12')	2.5 m (8')
4.0 m (13')	2.8 m (9')
4.3 m (14')	3.1 m (10')
4.6 m (15')	3.4 m (11')
4.9 m (16')	3.7 m (12')
5.2 m (17')	4.0 m (13')
5.5 m (18')	4.3 m (14')
5.8 m (19')	4.6 m (15')
6.1 m (20')	4.9 m (16')
6.4 m (21')	5.2 m (17')
6.7 m (22')	5.5 m (18')
7.0 m (23')	5.8 m (19')
7.3 m (24')	6.1 m (20')
7.6 m (25')	6.4 m (21')

- NOTES
1. EACH LOOP SHALL BE SPliced TO A 4-C NO.18 TWISTED SHIELDED LEAD IN WHEN 150FT. (45 m) OR MORE FROM CABINET.
  2. LOOPS SHALL BE SPliced IN HANDHOLES ONLY, OTHERWISE WRITTEN PERMISSION SHALL BE OBTAINED FROM TSC ENGINEER.
  3. LOOPS SHALL NOT BE SPliced IN SERIES.
  4. EACH LOOP LEAD IN SHALL BE IDENTIFIED AND PERMANENTLY COLOR CODED IN THE COREHOLE, HANDHOLE & CABINETS THRU WHICH THEY ENTER OR PASS AND TAGGED WITH THE CORRECT NOMENCLATURES.

FOR INFORMATION ONLY

REVISIONS		ILLINOIS DEPARTMENT OF TRANSPORTATION TRAFFIC SYSTEMS CENTER
NAME	DATE	
RL	5/94	<b>TYPICAL RAMP METERING INSTALLATION TYPE I &amp; II (WITH CURB &amp; GUTTER)</b> SCALE: NONE DATE: 6-22-94 DRAWN BY: G.M. CHECKED BY: R.L.
T.C.	3/96	
RL	2/98	