

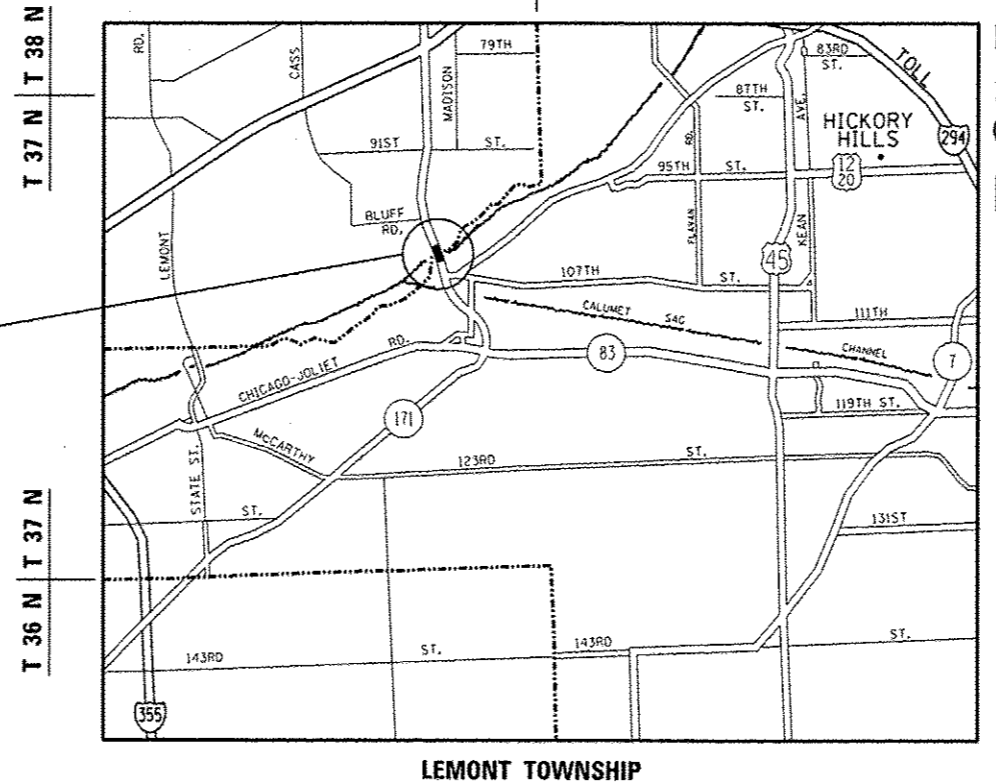
STATE OF ILLINOIS
DEPARTMENT OF TRANSPORTATION
DIVISION OF HIGHWAYS

**PROPOSED
HIGHWAY PLANS**

F.A.P. ROUTE 344: IL 83 (KINGERY HIGHWAY)
OVER S & S AND I & M CANALS
SECTION: 2012-055BP
BRIDGE PAINTING
COOK COUNTY

C-91-026-13

R 11 E | R 12 E



IMPROVEMENT LOCATION
SN 016-0425

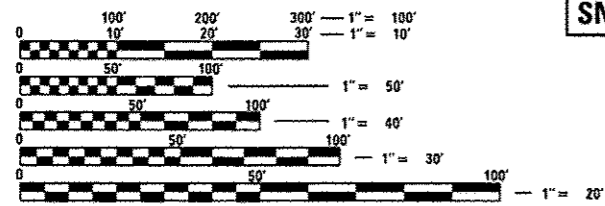
GROSS & NET LENGTH = 250.9 FT. = 0.048 MILE

FOR INDEX OF SHEETS, SEE SHEET NO. 2

PROJECT IS LOCATED IN THE
TOWNSHIP OF LEMONT.

TRAFFIC DATA

2011 ADT = 28,600
POSTED SPEED LIMIT = 45 MPH



FULL SIZE PLANS HAVE BEEN PREPARED USING STANDARD
ENGINEERING SCALES. REDUCED SIZED PLANS WILL NOT
CONFORM TO STANDARD SCALES. IN MAKING MEASUREMENTS
ON REDUCED PLANS, THE ABOVE SCALES MAY BE USED.

J.U.L.I.E.
JOINT UTILITY LOCATION INFORMATION FOR EXCAVATION
1-800-892-0123
OR 811

PROJECT ENGINEER J. ALAIN MIDY (847) 221-3056
PROJECT MANAGER ISSAM RAYYAN (847) 705-4178

CONTRACT NO. 60V60

F.A.P. RTE.	SECTION	COUNTY	TOTAL SHEETS	SHEET NO.
344	2012-055BP	COOK	16	1

*16-1 = 15

D-91-026-13



LOCATION OF SECTION INDICATED THUS: - [black rectangle]

STATE OF ILLINOIS
DEPARTMENT OF TRANSPORTATION
DIVISION OF HIGHWAYS

SUBMITTED February 20 13
John D. Baranzoni
DEPUTY DIRECTOR OF HIGHWAYS, REGION ENGINEER

March 22 20 13
John D. Baranzoni P.E. *for*
ENGINEER OF DESIGN AND ENVIRONMENT

March 22 20 13
Omer Osman P.E. *for*
DIRECTOR OF HIGHWAYS, CHIEF ENGINEER

PRINTED BY THE AUTHORITY
OF THE STATE OF ILLINOIS