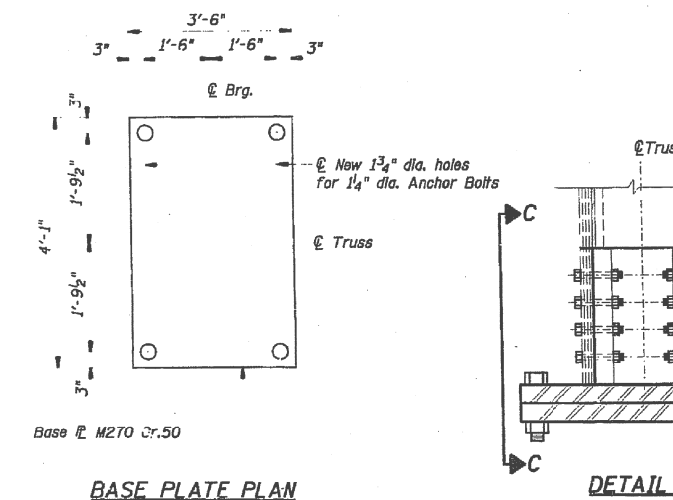
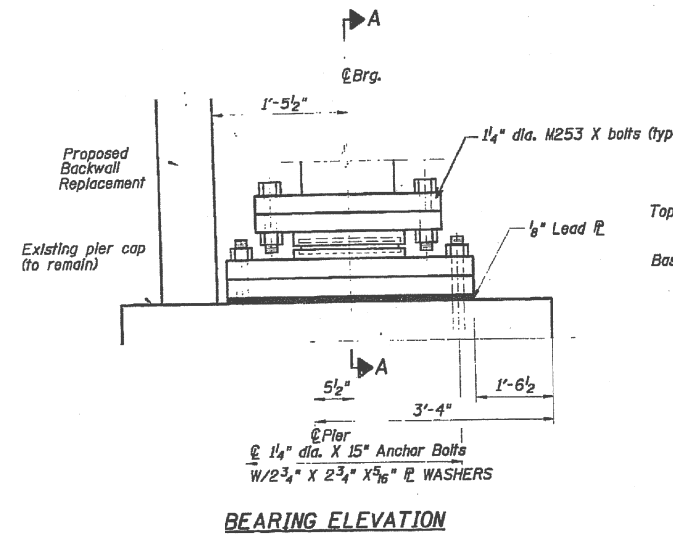
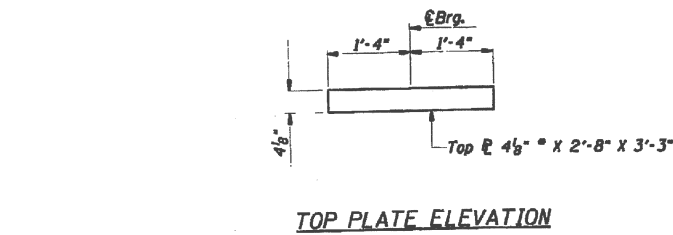
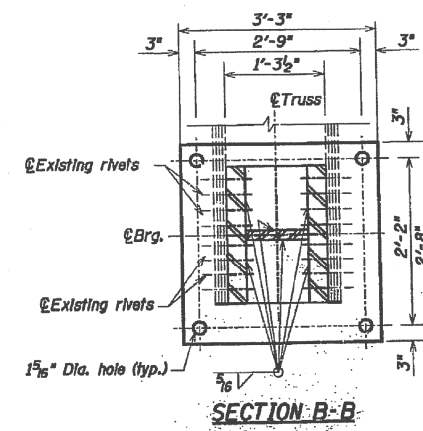
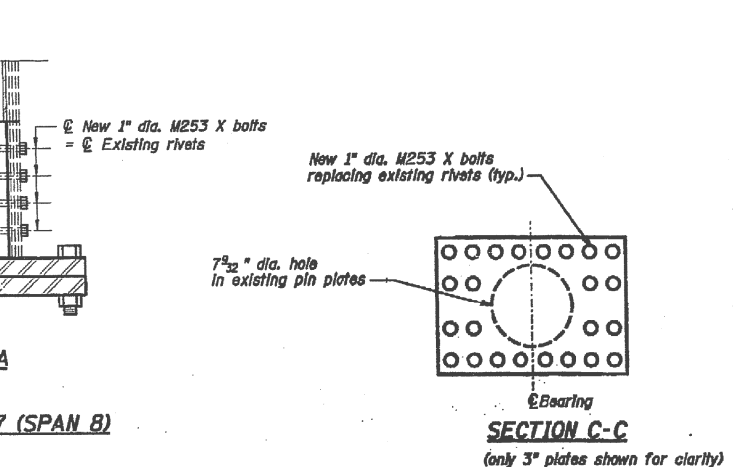
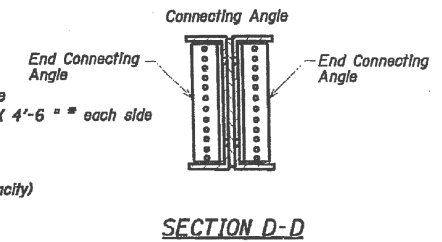
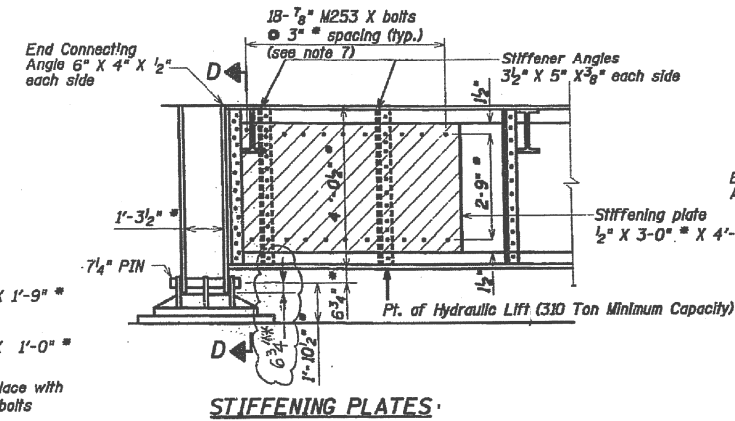
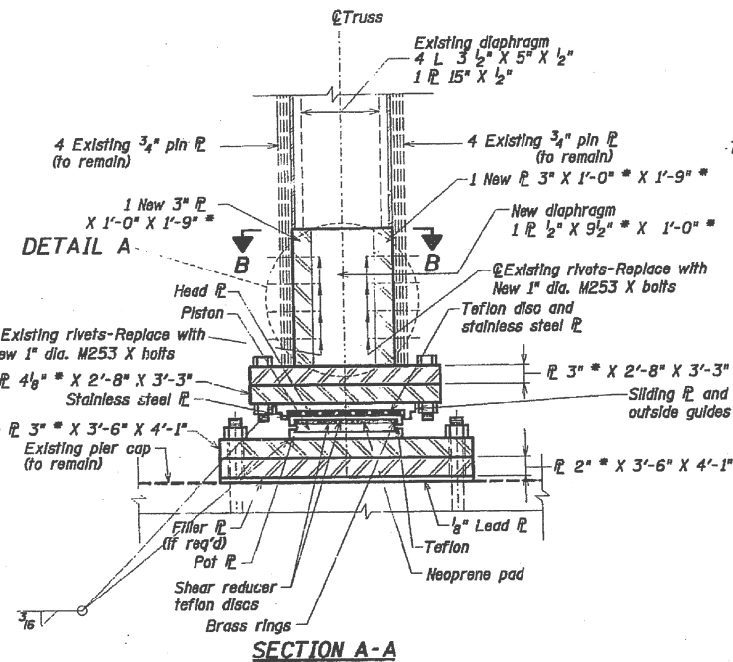


# FOR INFORMATION ONLY



**1100 KIP UNI-DIRECTIONAL POT BEARINGS AT PIER #7 (SPAN 8)**  
(No. Required = 2)



### POT BEARING DATA

		CSSC PIER 7 EXP.
Max. $P$	Kips	710
$E + I$	Kips	180
Total	Kips	890
<b>Long. Loads (Max.)</b>		
Wind	Kips	0
Earthquake	Kips	0
<b>Trans. Loads (Max.)</b>		
Wind	Kips	39
Earthquake	Kips	142
<b>Movement Long. (IN.)</b>		
		1 5/8" E.W.
<b>Movement Tran. (IN.)</b>		
		1/4" E.W.
<b>Earthquake A. bolts</b>		
Long.	Kips	0
Trans.	Kips	142

Maximum sliding coefficient of friction shall not exceed 3 percent.

FILE NAME =	USER NAME = pyrzanowskirb	DESIGNED -	REVISED -	<b>STATE OF ILLINOIS DEPARTMENT OF TRANSPORTATION</b>	<b>POT BEARINGS (PIER 7) IL 83 AT S &amp; S AND I &amp; M CANALS (SN 016-0425)</b>	F.A.P. RTE.	SECTION	COUNTY	TOTAL SHEETS	SHEET NO.	
et:\pw\work\p10102613\p10102613-sht-plan.dgn	DI02613-sht-plan.dgn	DRAWN -	REVISED -			344	2012-055BP	COOK	16	15	
PLOT SCALE = 100.0000' / in.		CHECKED -	REVISED -			<b>CONTRACT NO. 60V60</b>					
*MODELNAME*	PLOT DATE = 1/25/2013	DATE -	REVISED -			ILLINOIS FED. AID PROJECT					