

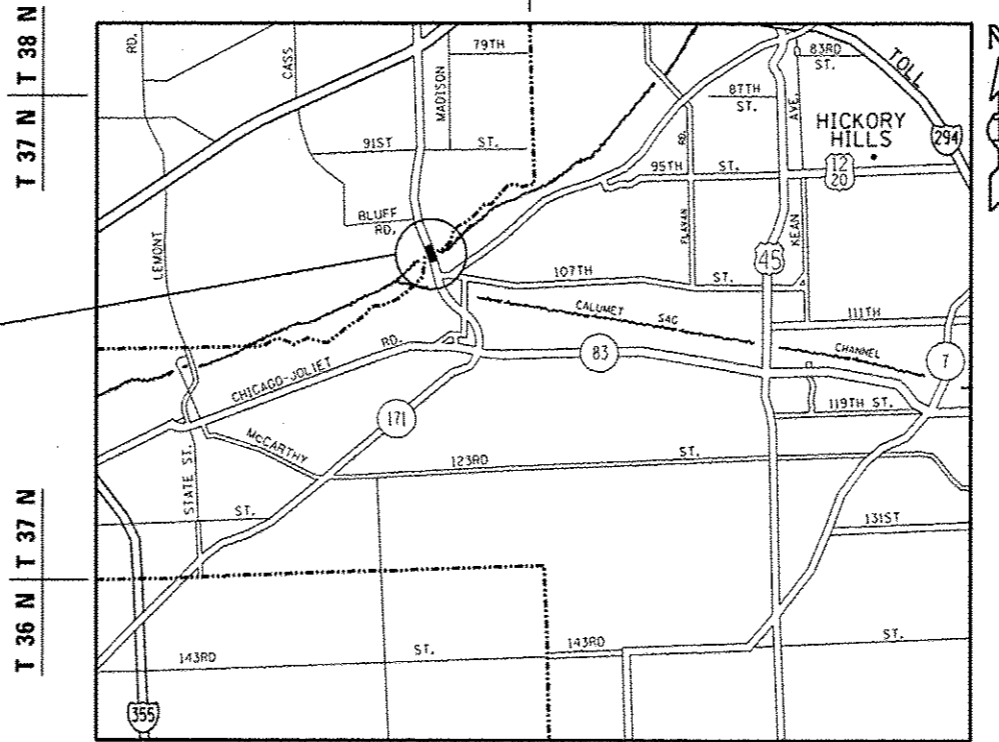
STATE OF ILLINOIS  
DEPARTMENT OF TRANSPORTATION  
DIVISION OF HIGHWAYS

**PROPOSED  
HIGHWAY PLANS**

F.A.P. ROUTE 344: IL 83 (KINGERY HIGHWAY)  
OVER S & S AND I & M CANALS  
SECTION: 2012-055BP  
BRIDGE PAINTING  
COOK COUNTY

C-91-026-13

R 11 E | R 12 E



LEMONT TOWNSHIP

GROSS & NET LENGTH = 250.9 FT. = 0.048 MILE

F.A.P. RTE.	SECTION	COUNTY	TOTAL SHEETS	SHEET NO.
344	2012-055BP	COOK	16	1

\*16-1 = 15

D-91-026-13



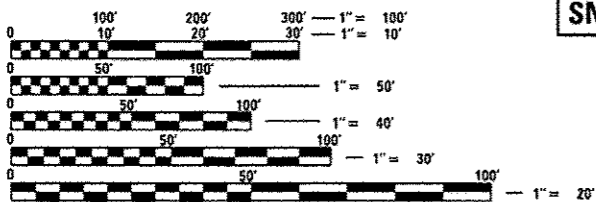
LOCATION OF SECTION INDICATED THUS: - [black rectangle] -

FOR INDEX OF SHEETS, SEE SHEET NO. 2

PROJECT IS LOCATED IN THE TOWNSHIP OF LEMONT.

**TRAFFIC DATA**

2011 ADT = 28,600  
POSTED SPEED LIMIT = 45 MPH



FULL SIZE PLANS HAVE BEEN PREPARED USING STANDARD ENGINEERING SCALES. REDUCED SIZED PLANS WILL NOT CONFORM TO STANDARD SCALES. IN MAKING MEASUREMENTS ON REDUCED PLANS, THE ABOVE SCALES MAY BE USED.

J.U.L.I.E.  
JOINT UTILITY LOCATION INFORMATION FOR EXCAVATION  
1-800-892-0123  
OR 811

PROJECT ENGINEER J. ALAIN MIDY (847) 221-3056  
PROJECT MANAGER ISSAM RAYYAN (847) 705-4178

CONTRACT NO. 60V60

STATE OF ILLINOIS  
DEPARTMENT OF TRANSPORTATION  
DIVISION OF HIGHWAYS

SUBMITTED February 20 13  
*John D. Baranzoni*  
DEPUTY DIRECTOR OF HIGHWAYS, REGION ENGINEER

March 22 20 13  
*John D. Baranzoni, P.E.*  
ENGINEER OF DESIGN AND ENVIRONMENT

March 22 20 13  
*Omer Osman, P.E.*  
DIRECTOR OF HIGHWAYS, CHIEF ENGINEER

PRINTED BY THE AUTHORITY  
OF THE STATE OF ILLINOIS

**INDEX OF SHEETS**

- 1. TITLE SHEET
  - 2. INDEX OF SHEETS, STATE STANDARDS, GENERAL NOTES AND GENERAL PAINT NOTES
  - 3. SUMMARY OF QUANTITIES
  - \* 4-15. EXISTING BRIDGE PLANS
  - 16. ARTERIAL ROAD INFORMATION SIGN (TC-22)
- \* 14. DELETED

**STATE STANDARDS**

STANDARD NO.	DESCRIPTION
701301-04	LANE CLOSURE, 2L, 2W, SHORT TIME OPERATIONS
701606-08	URBAN LANE CLOSURE, MULTILANE, 2W WITH MOUNTABLE MEDIAN
701801-05	SIDEWALK, CORNER OR CROSSWALK CLOSURE
701901-02	TRAFFIC CONTROL DEVICES

**GENERAL NOTES**

BEFORE STARTING ANY EXCAVATION, THE CONTRACTOR SHALL CALL "J.U.L.I.E." AT (800) 892-0123 OR 811 FOR FIELD LOCATIONS OF BURIED ELECTRIC, TELEPHONE AND GAS UTILITIES. 48 HOUR NOTIFICATION IS REQUIRED.

THE CONTRACTOR SHALL COORDINATE CONSTRUCTION ACTIVITIES WITH UTILITY COMPANIES, AND THE TOWNSHIP OF LEMONT.

PLAN DIMENSIONS AND DETAILS RELATIVE TO EXISTING PLANS ARE SUBJECT TO NOMINAL CONSTRUCTION VARIATIONS. THE CONTRACTOR SHALL FIELD VERIFY EXISTING DIMENSIONS AND DETAILS AFFECTING NEW CONSTRUCTION AND MAKE NECESSARY APPROVED ADJUSTMENTS PRIOR TO CONSTRUCTION OR ORDERING OF MATERIALS. SUCH VARIATIONS SHALL NOT BE CAUSE FOR ADDITIONAL COMPENSATION FOR A CHANGE IN SCOPE OF THE WORK, HOWEVER, THE CONTRACTOR WILL BE PAID FOR THE QUANTITY ACTUALLY FURNISHED BASED AT THE UNIT PRICE BID FOR THE WORK.

THE CONTRACTOR WILL NOT BE ALLOWED TO SET UP A YARD OR FIELD OFFICE ON STATE PROPERTY WITHOUT WRITTEN PERMISSION FROM THE DEPARTMENT.

THE CONTRACTOR SHALL CONTACT THE DISTRICT ONE TRAFFIC CONTROL SUPERVISOR AT (847) 705-4470 A MINIMUM OF 72 HOURS IN ADVANCE OF BEGINNING WORK.

IT SHALL BE THE CONTRACTOR'S RESPONSIBILITY TO PROTECT AND MAINTAIN THE EXISTING BRIDGE LIGHTING AT ANY LOCATIONS THAT LIGHTING IS ENCOUNTERED ADJACENT TO AN AREA TO BE CLEANED AND PAINTED.

THE CONTRACTOR SHALL BE REQUIRED TO PROVIDE ACCESS TO ABUTTING PROPERTY AT ALL TIMES DURING THE CONSTRUCTION OF THIS PROJECT.

DO NOT SCALE PLANS FOR CONSTRUCTION DIMENSIONS.

THE CONTRACTOR SHALL OBTAIN COAST GUARD APPROVAL TO OCCUPY NAVIGABLE WATERS, IF REQUIRED, FOR THE PROPOSED WORK. A WORK PLAN SHALL BE PREPARED BY THE CONTRACTOR, REVIEWED AND APPROVED BY THE ENGINEER AND BE SUBMITTED BY THE ENGINEER TO THE COAST GUARD AT THE ADDRESS LISTED BELOW FOR APPROVAL.

BRIDGE ADMINISTRATOR  
 US COAST GUARD  
 NINTH COAST GUARD DISTRICT  
 1240 E. NINTH ST.  
 CLEVELAND, OH 44199-2060

**GENERAL PAINT NOTES**

CLEANING AND PAINTING OF THE EXISTING STRUCTURAL STEEL SHALL BE AS SPECIFIED IN THE SPECIAL PROVISION FOR "CLEANING AND PAINTING EXISTING STEEL STRUCTURES."

A MINIMUM OF TWO (2) AIR MONITORS WILL BE REQUIRED TO MONITOR ABRASIVE BLASTING OPERATIONS PER LOCATION, SEE SPECIAL PROVISIONS FOR CONTAINMENT AND DISPOSAL OF LEAD PAINT CLEANING RESIDUE.

ALL EXISTING STEEL OF THE TRUSS SHALL BE CLEANED PER NEAR WHITE BLAST CLEANING - SSPC-SP10. ALL EXISTING STEEL OF THE TRUSS SHALL BE PAINTED ACCORDING TO THE REQUIREMENT OF PAINT SYSTEM 1-0Z/E/U. THE COLOR OF THE FINAL FINISH COAT FOR ALL INTERIOR STEEL SURFACES SHALL BE GRAY, MUNSELL NO. 5B 7/1. THE COLOR OF THE FINAL FINISH COAT FOR TRUSS MEMBERS SHALL BE BLUE, MUNSELL NO. 10B 3/6.

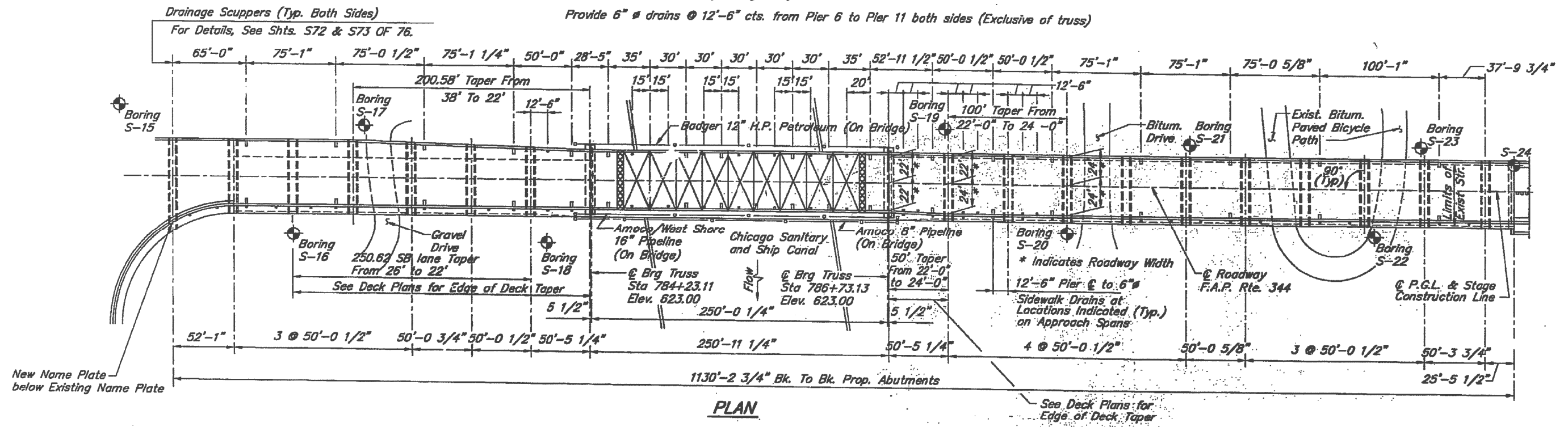
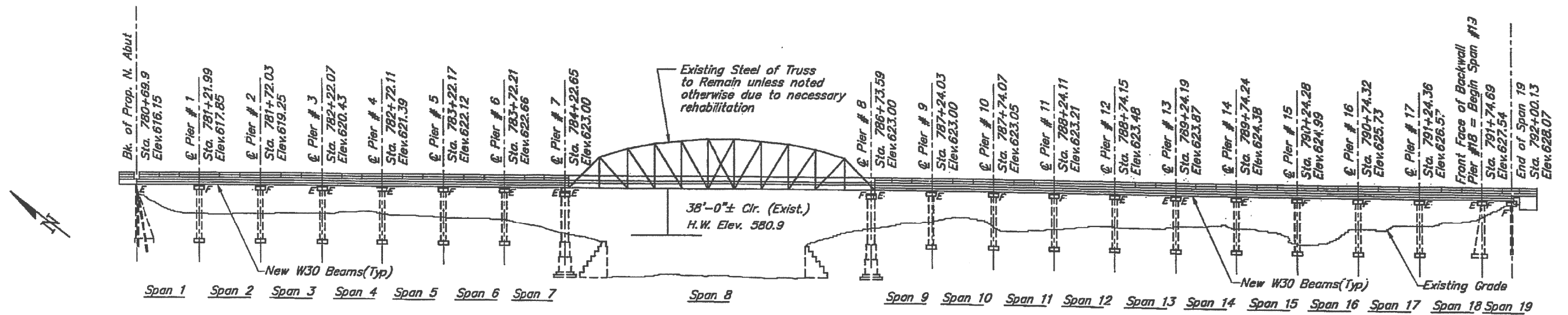
THE CONTRACTOR SHALL SUBMIT CALCULATIONS AND DETAILS DEMONSTRATING THE STRUCTURAL INTEGRITY OF THE BRIDGE IS MAINTAINED UNDER THE ADDITIONAL IMPOSED LOADS OF THE CONTAINMENT SYSTEM. SEE SPECIAL PROVISIONS.

FILE NAME *	USER NAME * pyzranovskirb	DESIGNED -	REVISED -	<b>STATE OF ILLINOIS DEPARTMENT OF TRANSPORTATION</b>	<b>INDEX OF SHEETS, STATE STANDARDS, GENERAL NOTES, AND GENERAL PAINT NOTES</b>				F.A.P. RTE.	SECTION	COUNTY	TOTAL SHEETS	SHEET NO.
or\p\work\p\dot\pyzranovskirb\0319367\0102613-sht-plan.dgn		DRAWN -	REVISED -		344	2012-055BP	COOK	16	2				
#MODELNAME#	PLOT SCALE * 100.0000 1/ in.	CHECKED -	REVISED -		SCALE: SHEET OF SHEETS STA. TO STA.				CONTRACT NO. 60V60				
	PLOT DATE * 1/25/2013	DATE -	REVISED -		ILLINOIS FED. AID PROJECT								

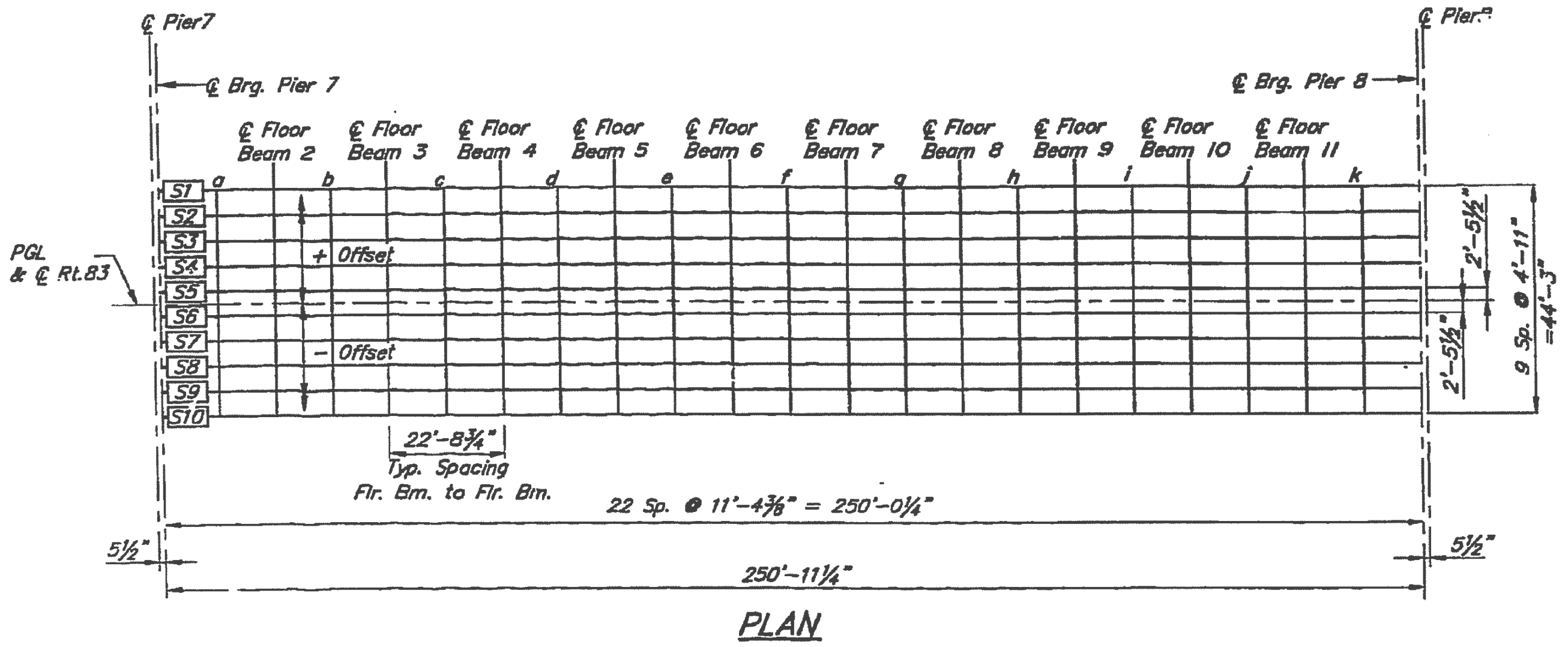
Rev.

SUMMARY OF QUANTITIES			URBAN	CONSTRUCTION TYPE CODE 0014					SUMMARY OF QUANTITIES			CONSTRUCTION TYPE CODE					
CODE NO	ITEM	UNIT	TOTAL QUANTITIES	0014 100% STATE					CODE NO	ITEM	UNIT	TOTAL QUANTITIES					
67000400	ENGINEER'S FIELD OFFICE, TYPE A	CAL MO	6	6													
67100100	MOBILIZATION	L SUM	1	1													
70102625	TRAFFIC CONTROL AND PROTECTION, STANDARD 701606	L SUM	1	1													
70102640	TRAFFIC CONTROL AND PROTECTION, STANDARD 701801	L SUM	1	1													
Z0007112	CONTAINMENT AND DISPOSAL OF LEAD PAINT CLEANING RESIDUES	L SUM	1	1													
Z0010501	CLEANING AND PAINTING STEEL BRIDGE NO. 1	L SUM	1	1													
Z0030850	TEMPORARY INFORMATION SIGNING	SO FT	51.4	51.4													

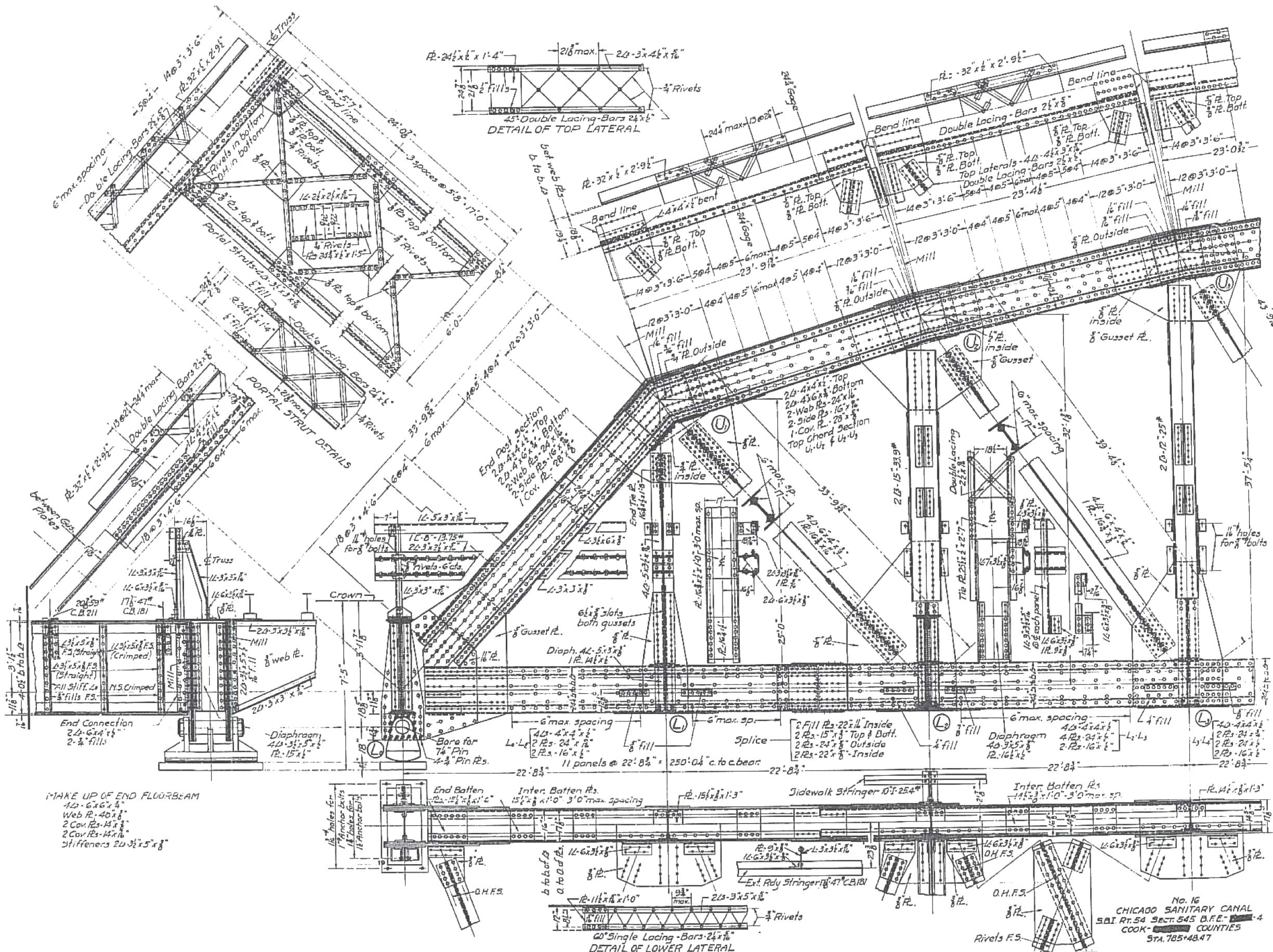
# FOR INFORMATION ONLY



FILE NAME =	USER NAME = pyrzanowskirb	DESIGNED -	REVISED -	<b>STATE OF ILLINOIS</b> <b>DEPARTMENT OF TRANSPORTATION</b>	<b>GENERAL PLAN AND ELEVATION</b> <b>IL 83 AT S &amp; S AND I &amp; M CANALS (SN 016-0425)</b>	F.A.P. RTE. =	SECTION =	COUNTY =	TOTAL SHEETS =	SHEET NO. =	
et:\pw\work\p1dot\pyrzanowskirb\d0315367	D102613-sht-plan.dgn	DRAWN -	REVISED -			344	2012-055BP	COOK	16	4	
\$MODELNAME\$	PLOT SCALE = 100.0000' / in.	CHECKED -	REVISED -			CONTRACT NO. 60V60					
	PLOT DATE = 1/25/2013	DATE -	REVISED -			ILLINOIS FED. AID PROJECT					



FILE NAME =	USER NAME = pyrzanowski	DESIGNED -	REVISED -	STATE OF ILLINOIS DEPARTMENT OF TRANSPORTATION	FLOOR BEAM PLAN IL 83 AT S & S AND I & M CANALS (SN 016-0425)				F.A.P. RTE.	SECTION	COUNTY	TOTAL SHEETS	SHEET NO.
et:\pw\work\p1dot\pyrzanowski\0315367	D102613-sht-plan.dgn	DRAWN -	REVISED -		344	2012-055BP	COOK	16	5				
#MODELNAME#	PLOT SCALE = 100.0000' / in.	CHECKED -	REVISED -		SCALE:      SHEET      OF      SHEETS      STA.      TO      STA.				CONTRACT NO. 60V60				
	PLOT DATE = 1/25/2013	DATE -	REVISED -		ILLINOIS FED. AID PROJECT								



FILE NAME :  
 c:\p\work\p\idat\pyrzenowskirb\d01261367

USER NAME : pyrzenowskirb  
 D:\012613-sht-plan.dgn  
 PLOT SCALE = 100.0000' / in.  
 PLOT DATE = 1/25/2013

DESIGNED -  
 DRAWN -  
 CHECKED -  
 DATE -

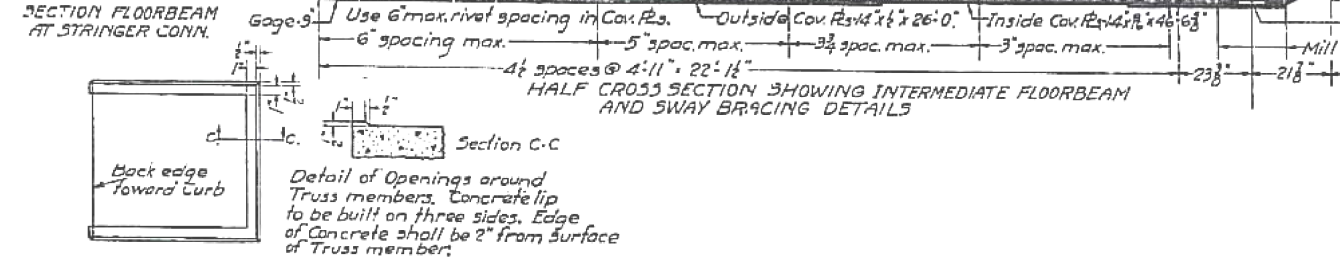
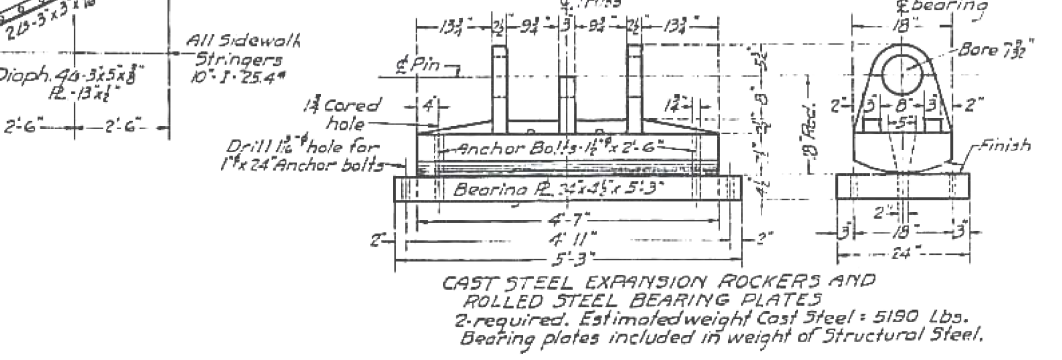
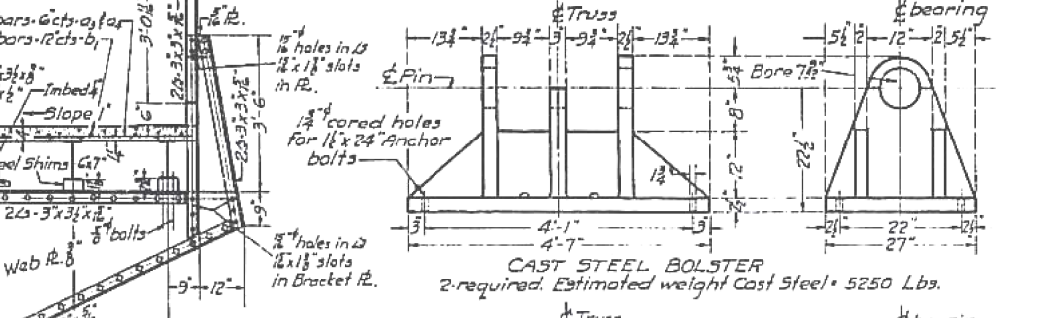
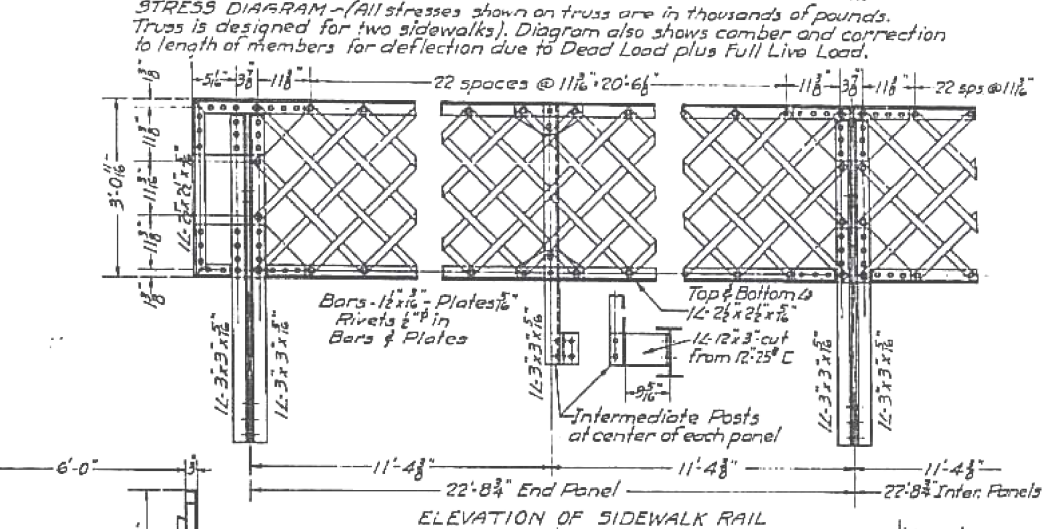
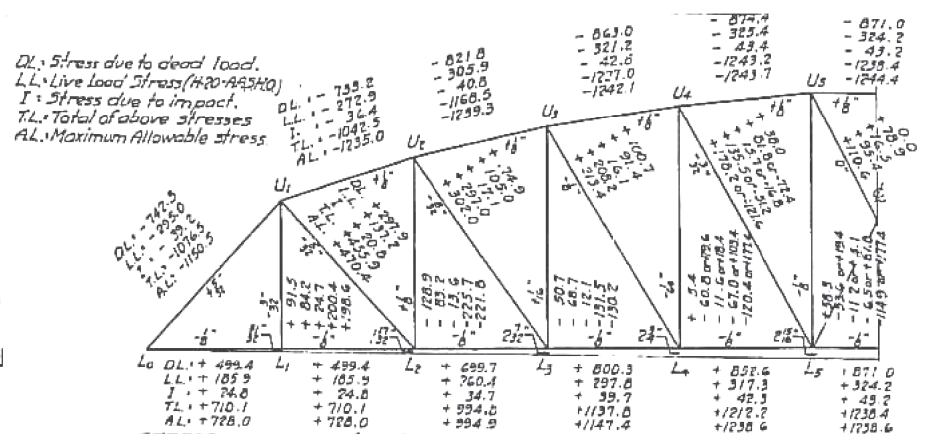
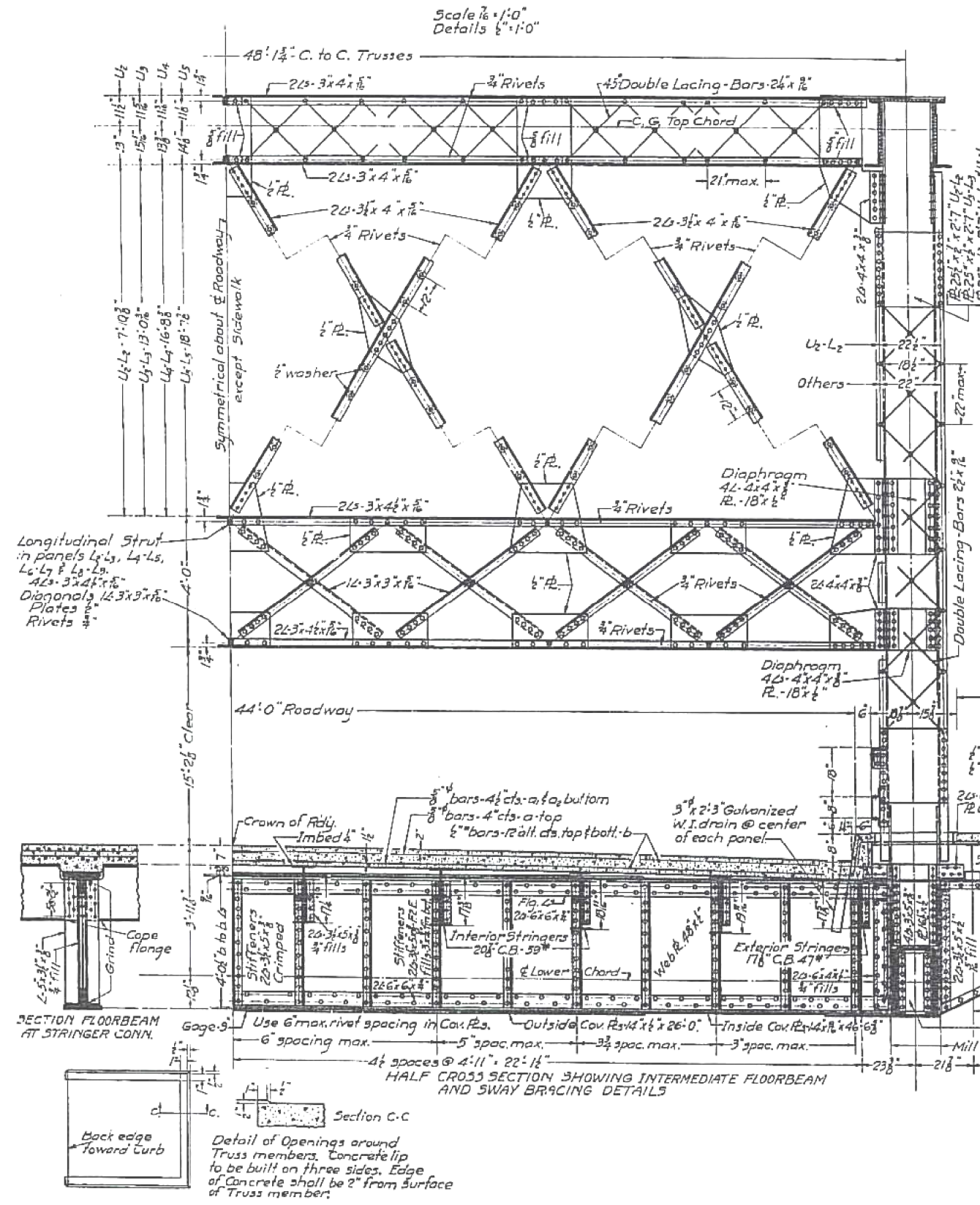
REVISED -  
 REVISED -  
 REVISED -  
 REVISED -

STATE OF ILLINOIS  
 DEPARTMENT OF TRANSPORTATION

TRUSS DETAILS SHEET 1 OF 6  
 IL 83 AT S & S AND I & M CANALS (SN 016-0425)  
 SCALE: SHEET OF SHEETS STA. TO STA.

F.A.P. RTE.	SECTION	COUNTY	TOTAL SHEETS	SHEET NO.
344	2012-055BP	COOK	16	6
CONTRACT NO. 60V60				
ILLINOIS FED. AID PROJECT				





FILE NAME =  
 c:\pwwork\p\d02\pyrzenowskirb\d0215367

USER NAME = pyrzenowskirb  
 D:\02613-sht-plan.dgn  
 PLOT SCALE = 100.0000' / in.  
 PLOT DATE = 1/25/2013

DESIGNED -	REVISED -
DRAWN -	REVISED -
CHECKED -	REVISED -
DATE -	REVISED -

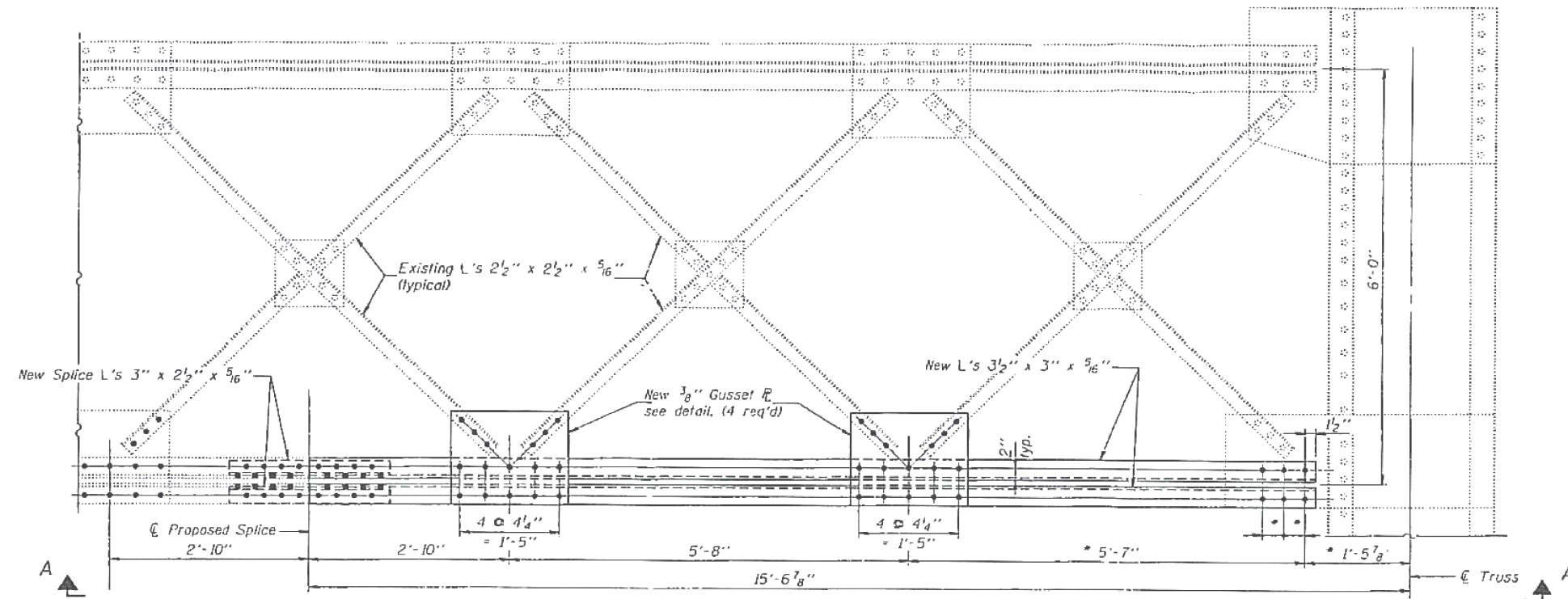
STATE OF ILLINOIS  
 DEPARTMENT OF TRANSPORTATION

TRUSS DETAILS SHEET 3 OF 6  
 IL 83 AT S & S AND I & M CANALS (SN 016-0425)

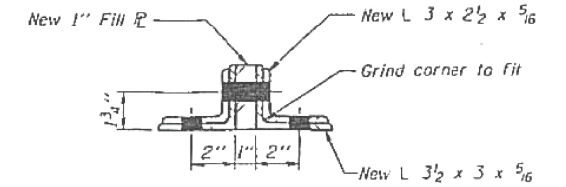
F.A.P. RTE.	SECTION	COUNTY	TOTAL SHEETS	SHEET NO.
344	2012-055BP	COOK	16	8
CONTRACT NO. 60V60				



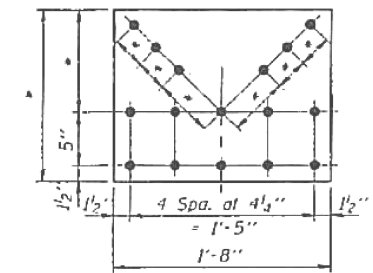
# FOR INFORMATION ONLY



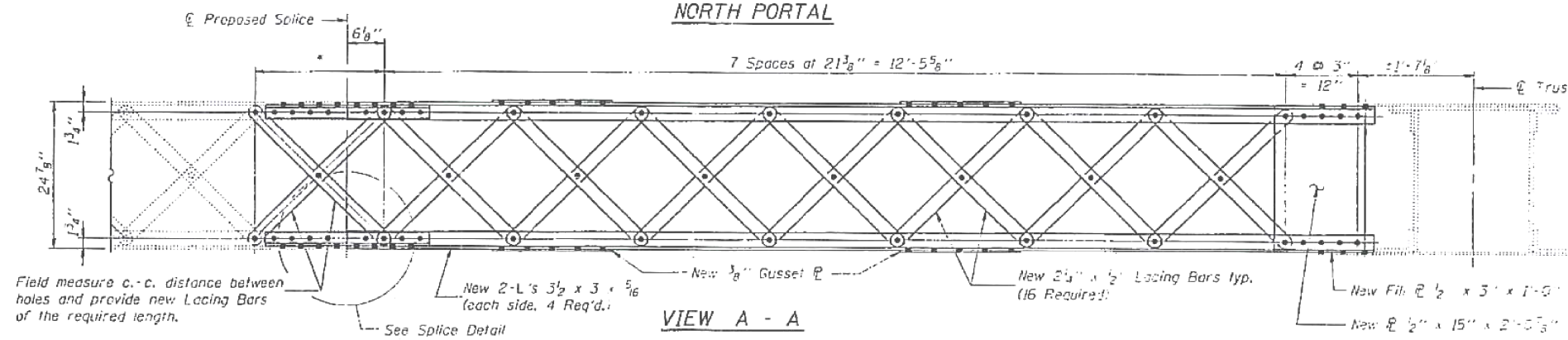
ELEVATION VIEW OF NORTH PORTAL



SECTION B - B

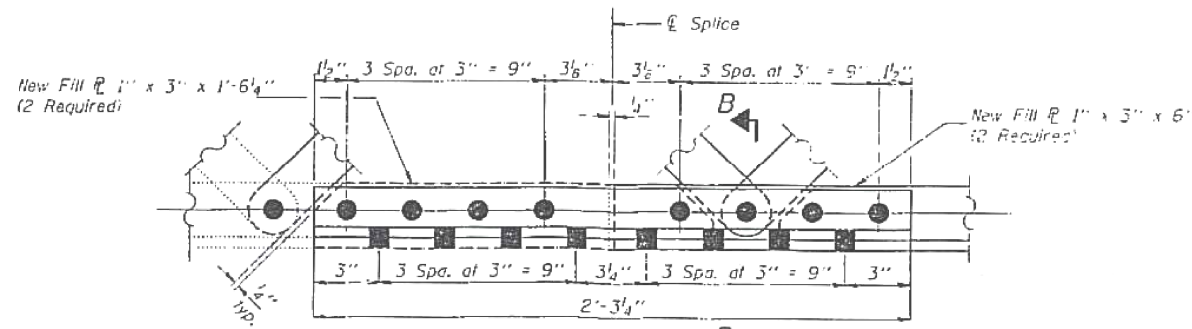


GUSSET PLATE DETAIL



VIEW A - A

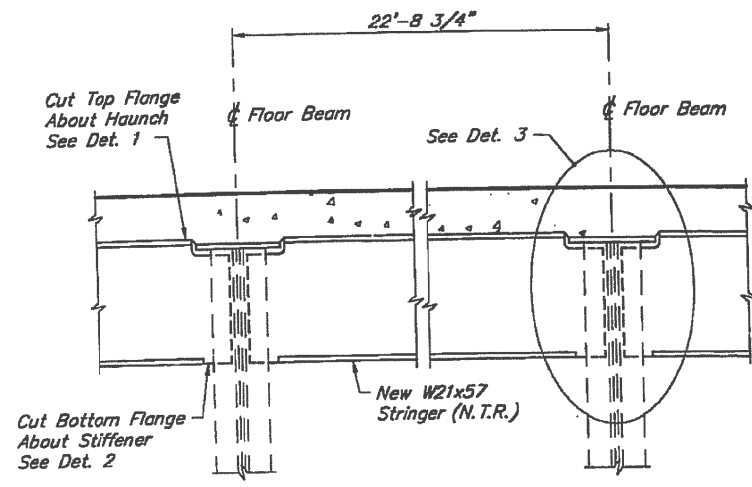
\* Dimensions to be determined or verified in the field prior to construction or ordering of materials.



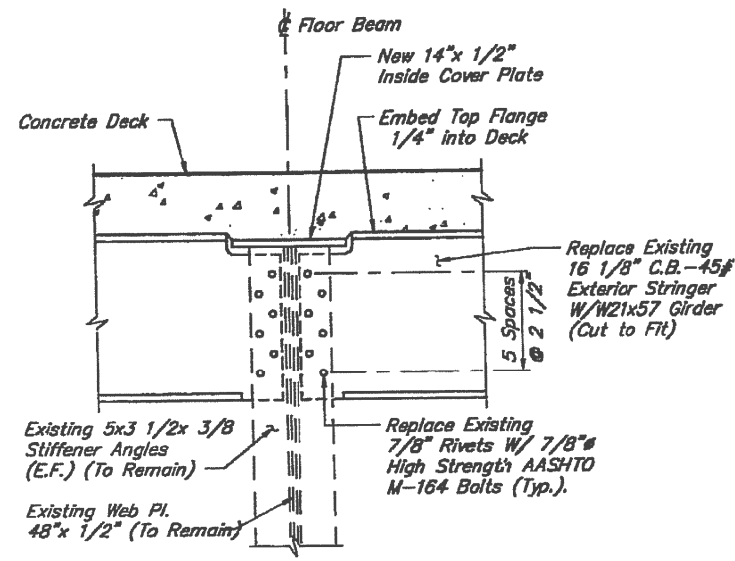
SPlice DETAIL

FILE NAME =	USER NAME = pyzzenowskirb	DESIGNED -	REVISED -	<b>STATE OF ILLINOIS DEPARTMENT OF TRANSPORTATION</b>	<b>TRUSS DETAILS SHEET 4 OF 6 IL 83 AT S &amp; S AND I &amp; M CANALS (SN 016-0425)</b>	F.A.P. RTE.	SECTION	COUNTY	TOTAL SHEETS	SHEET NO.	
et:\pw\work\p\id\pyzzenowskirb\d0315367	D102613-sht-plan.dgn	DRAWN -	REVISED -			344	2012-055BP	COOK	16	9	
\$MODELNAME\$	PLOT SCALE = 100.0000' / in.	CHECKED -	REVISED -			<b>CONTRACT NO. 60V60</b>					
	PLOT DATE = 1/25/2013	DATE -	REVISED -			ILLINOIS FED. AID PROJECT					

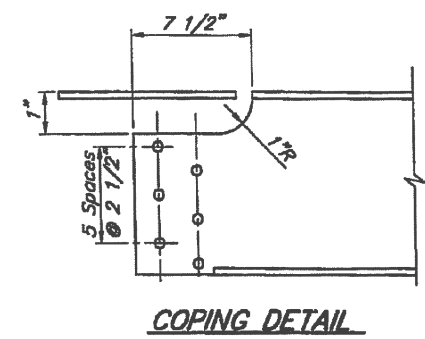
# FOR INFORMATION ONLY



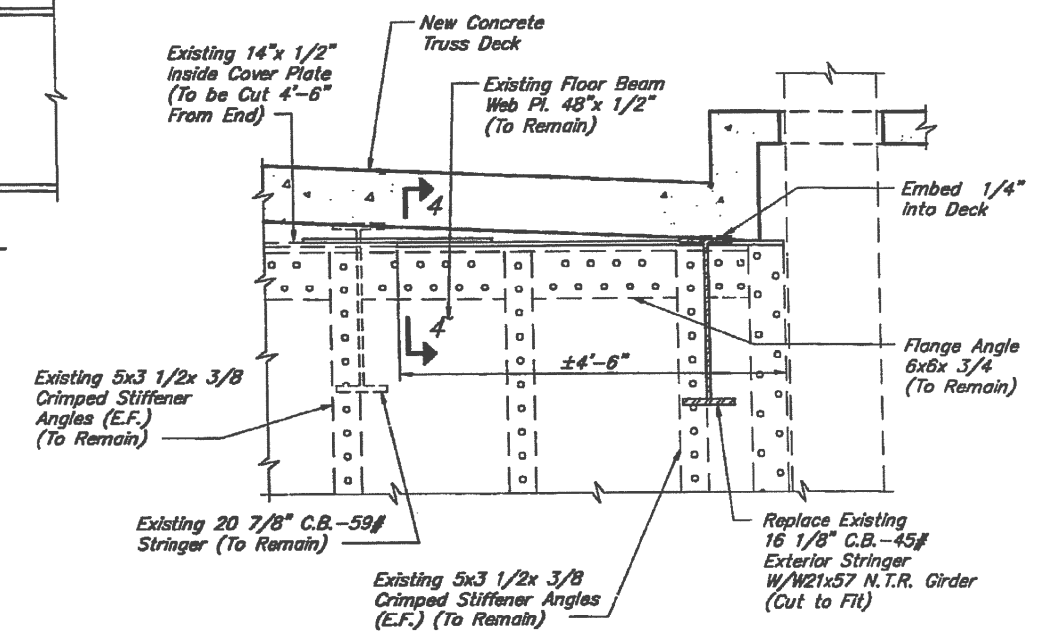
**DETAIL A**  
SHT. S36 OF 76



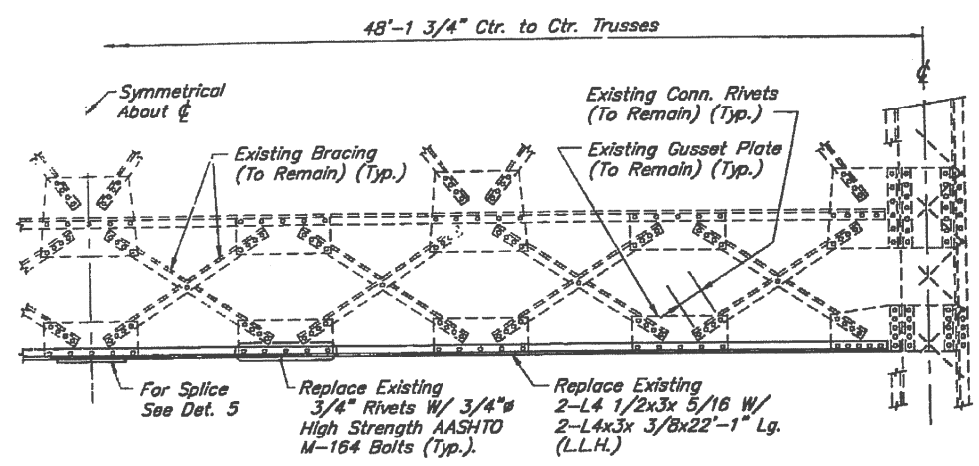
**DETAIL 3**



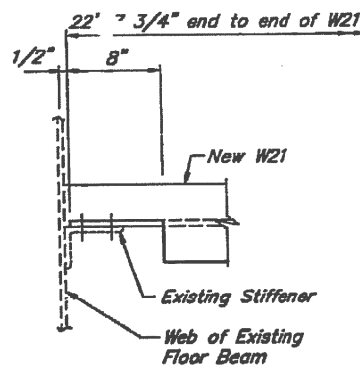
**COPING DETAIL**



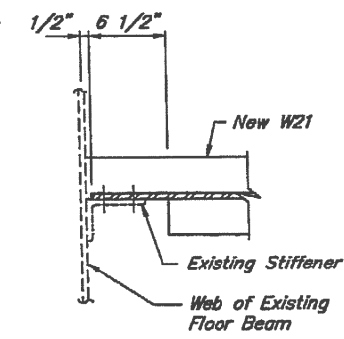
**DETAIL B**  
SHT. S36 OF 76



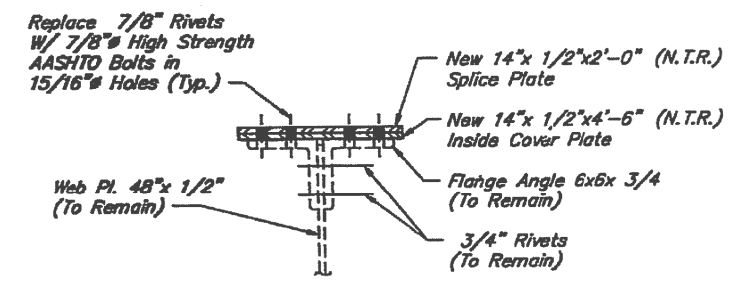
**DETAIL C**  
SHT. S36 OF 76



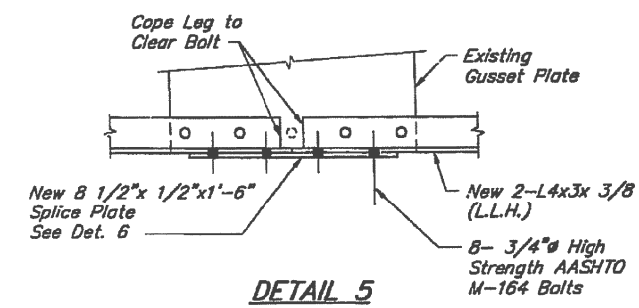
**DETAIL 1**  
Plan at Top Flange



**DETAIL 2**  
Plan at Bottom Flange



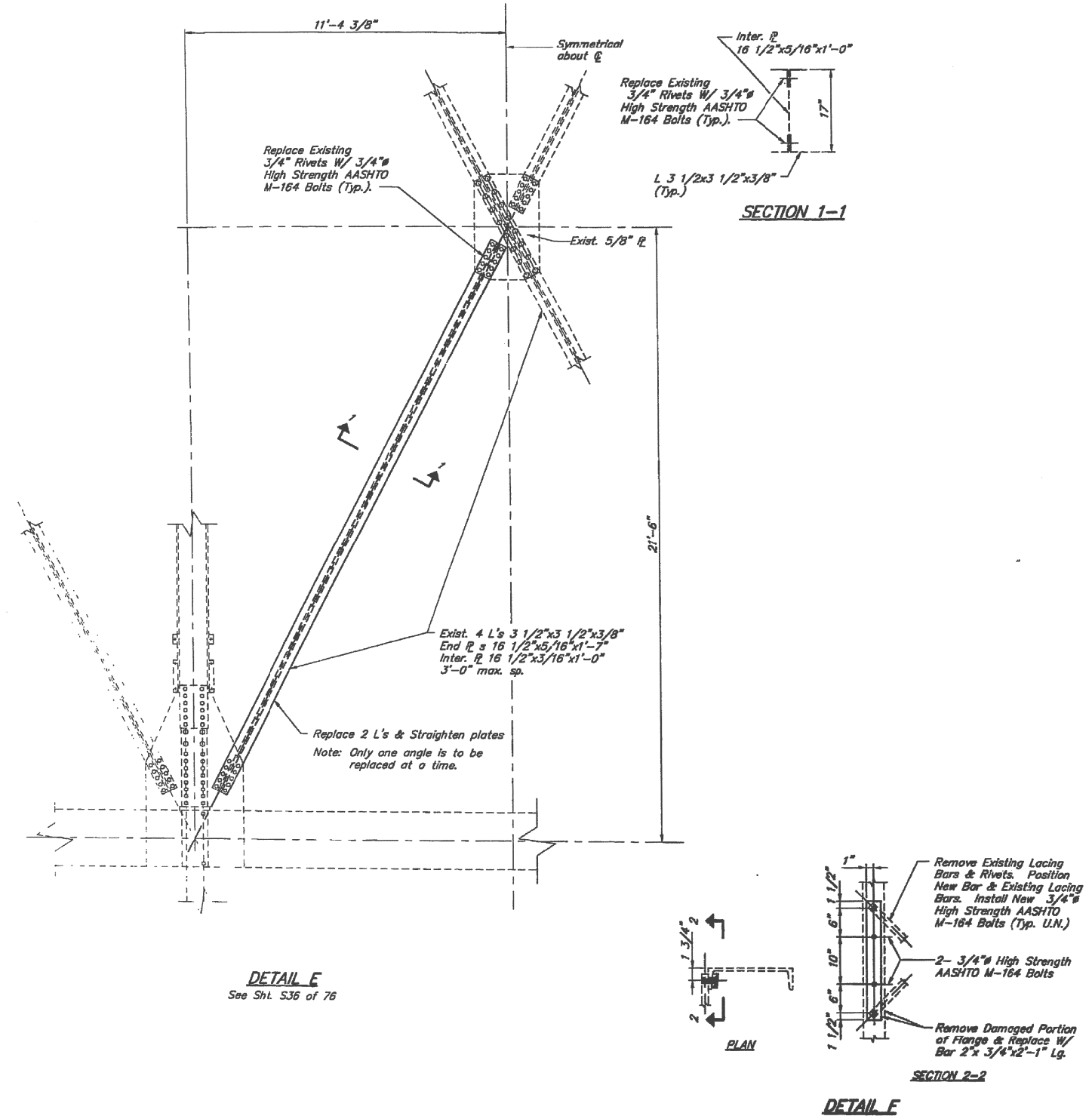
**SECTION 4-4**



**DETAIL 5**

FILE NAME =	USER NAME = pyzranowskirb	DESIGNED -	REVISED -	<b>STATE OF ILLINOIS</b> <b>DEPARTMENT OF TRANSPORTATION</b>	<b>TRUSS DETAILS SHEET 5 OF 6</b> <b>IL 83 AT S &amp; S AND I &amp; M CANALS (SN 016-0425)</b>	F.A.P. RTE. =	SECTION =	COUNTY =	TOTAL SHEETS =	SHEET NO. =	
et:\pw\work\p1dot\pyzranowskirb\d0315367	D102613-sht-plan.dgn	DRAWN -	REVISED -			344	2012-055BP	COOK	16	10	
\$MODELNAME\$	PLOT SCALE = 100.0000' / in.	CHECKED -	REVISED -			<b>CONTRACT NO. 60V60</b>					
	PLOT DATE = 1/25/2013	DATE -	REVISED -			ILLINOIS FED. AID PROJECT					

# FOR INFORMATION ONLY



FILE NAME =	USER NAME = pyzranowskirb	DESIGNED -	REVISED -
ct:\pwork\work\pwork\pyzranowskirb\d0315367	D102613-sht-plan.dgn	DRAWN -	REVISED -
\$MODELNAME\$	PLOT SCALE = 100.0000' / in.	CHECKED -	REVISED -
	PLOT DATE = 1/25/2013	DATE -	REVISED -

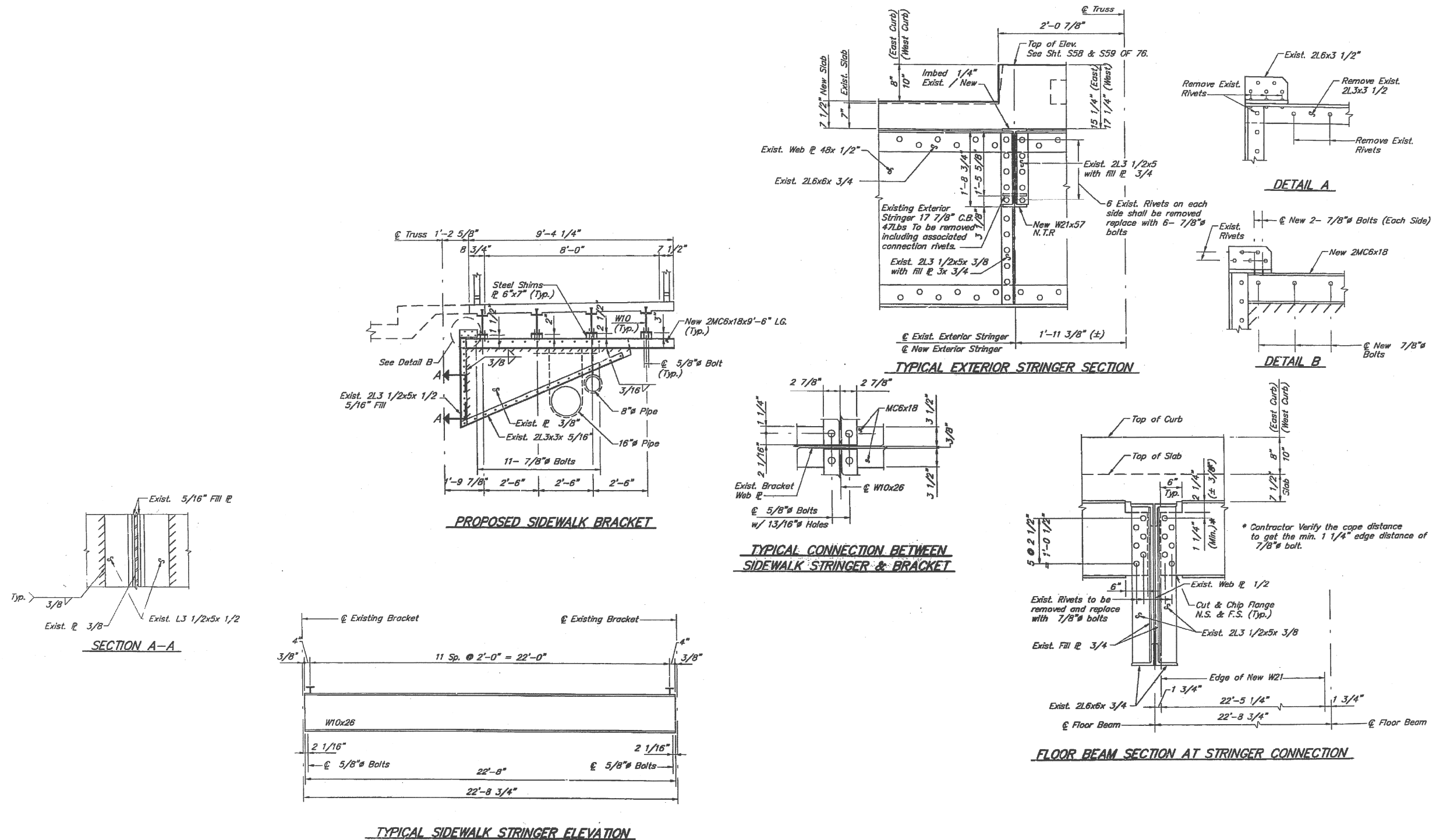
**STATE OF ILLINOIS  
DEPARTMENT OF TRANSPORTATION**

**TRUSS DETAILS SHEET 6 OF 6  
IL 83 AT S & S AND I & M CANALS (SN 016-0425)**

SCALE: SHEET OF SHEETS STA. TO STA.

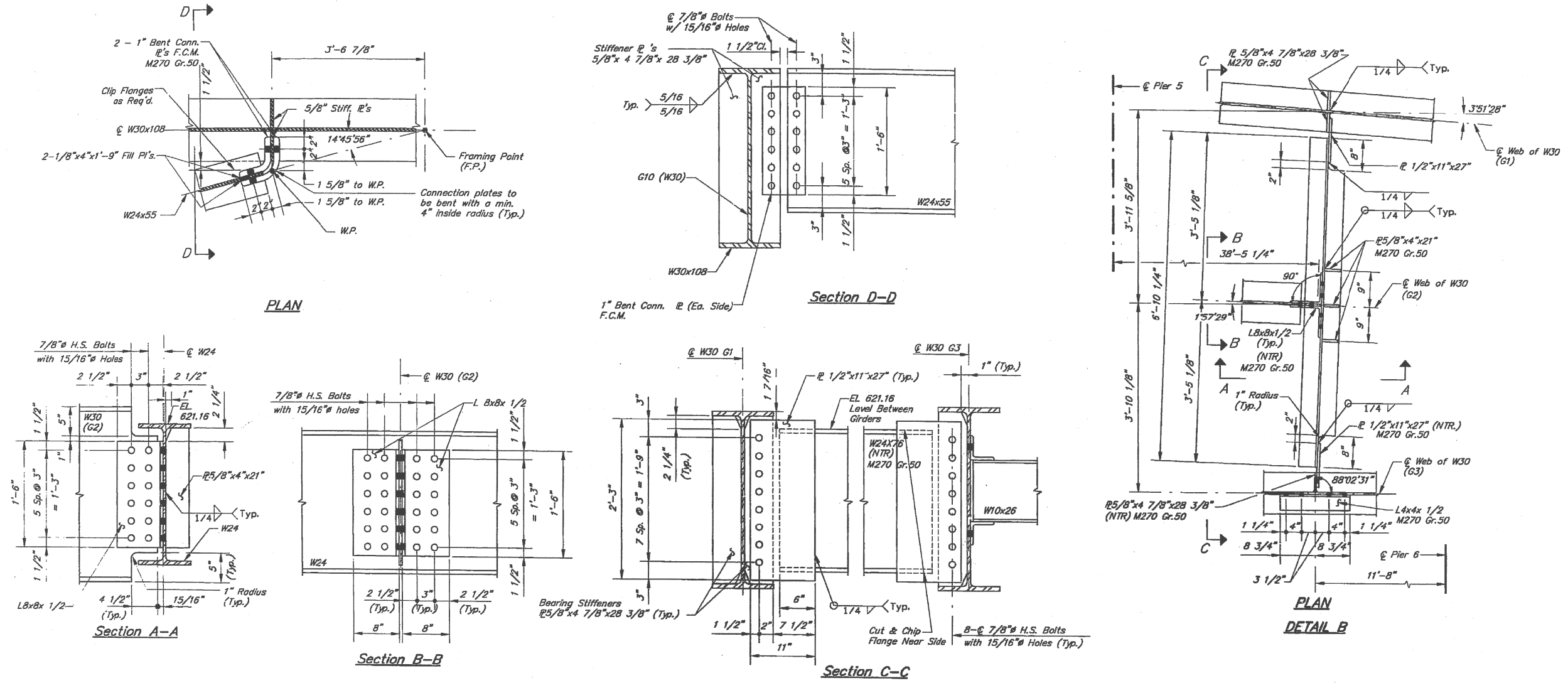
F.A.P. RTE.	SECTION	COUNTY	TOTAL SHEETS	SHEET NO.
344	2012-055BP	COOK	16	11
<b>CONTRACT NO. 60V60</b>				
ILLINOIS FED. AID PROJECT				

# FOR INFORMATION ONLY



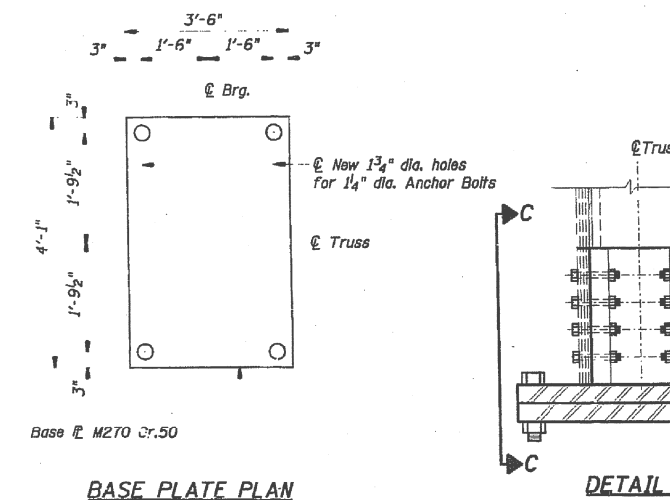
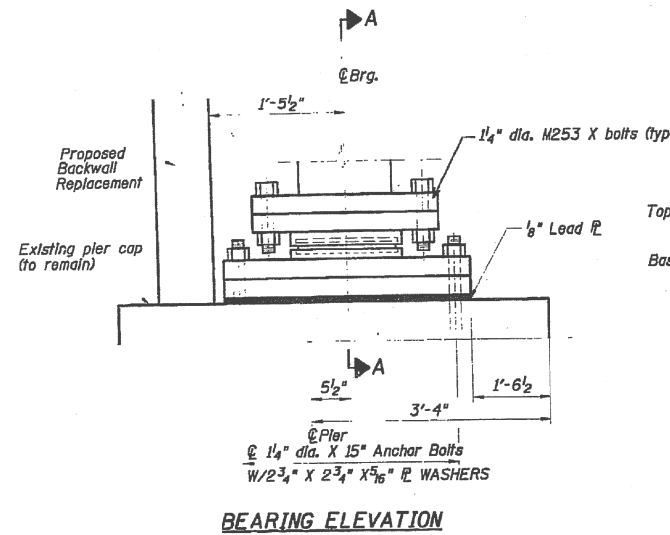
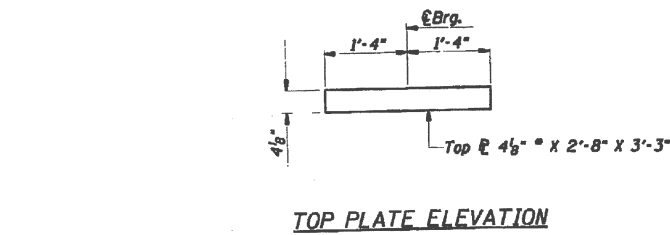
FILE NAME =	USER NAME = pyrzanowski	DESIGNED -	REVISED -	<b>STATE OF ILLINOIS DEPARTMENT OF TRANSPORTATION</b>	<b>TRUSS SIDEWALK BRACKET DETAILS &amp; EXTERIOR STRINGER DETAILS IL 83 AT S &amp; S AND I &amp; M CANALS (SN 016-0425)</b>	F.A.P. RTE.	SECTION	COUNTY	TOTAL SHEETS	SHEET NO.	
et:\pw\work\p\d02613-sht-plan.dgn	D102613-sht-plan.dgn	DRAWN -	REVISED -			344	2012-055BP	COOK	16	12	
\$MODELNAME\$	PLOT DATE = 1/25/2013	CHECKED -	REVISED -			CONTRACT NO. 60V60					
						ILLINOIS FED. AID PROJECT					

# FOR INFORMATION ONLY

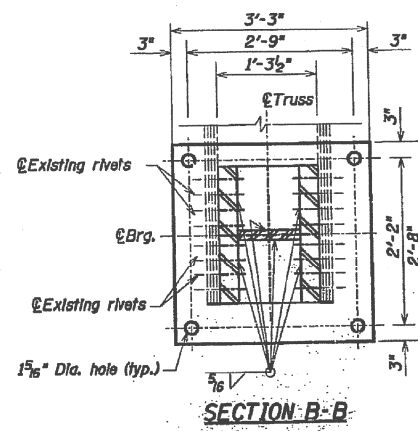
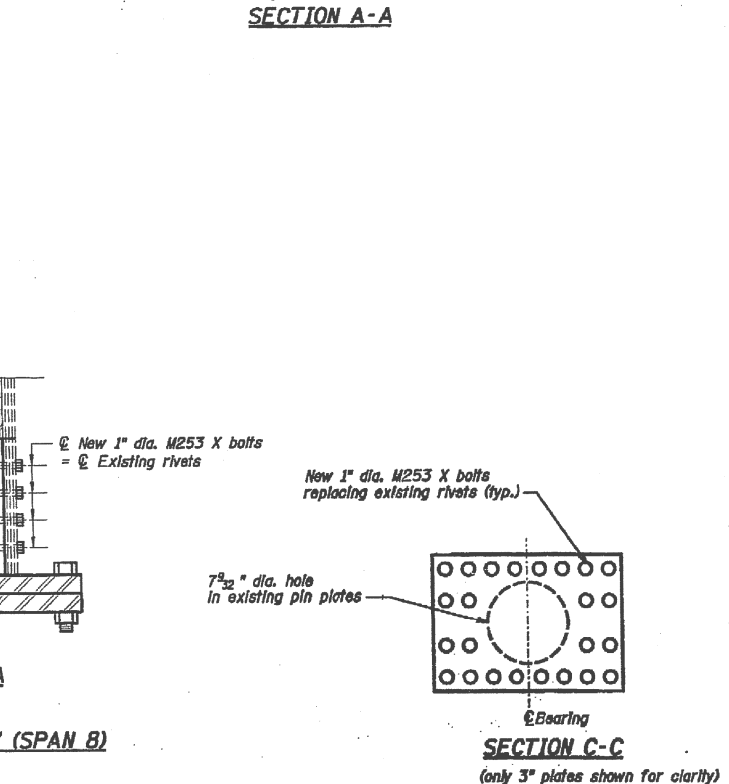
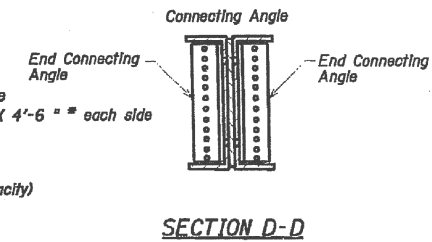
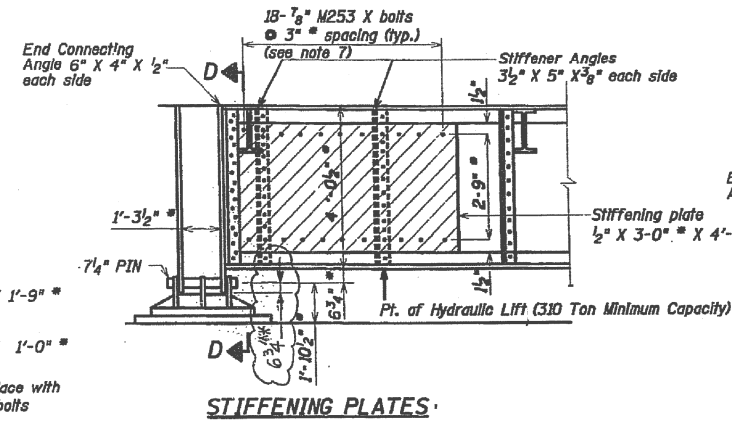
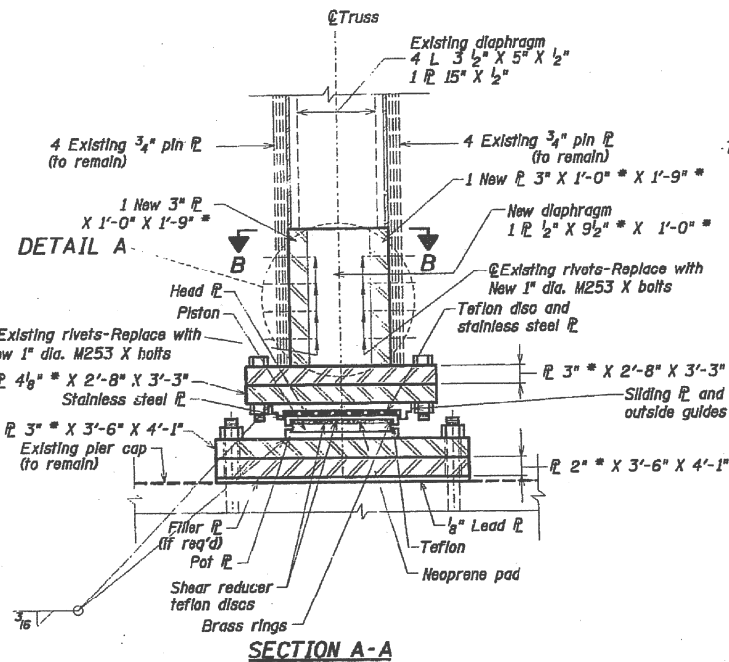


FILE NAME =	USER NAME = pyrzanowskirb	DESIGNED -	REVISED -	<b>STATE OF ILLINOIS DEPARTMENT OF TRANSPORTATION</b>	<b>STRUCTURAL STEEL DETAILS SHEET 1 OF 2 IL 83 AT S &amp; S AND I &amp; M CANALS (SN 016-0425)</b>	F.A.P. RTE.	SECTION	COUNTY	TOTAL SHEETS	SHEET NO.	
et:\pwork\pwork\pyrzanowskirb\d0315367	D102613-sht-plan.dgn	DRAWN -	REVISED -			344	2012-055BP	COOK	16	13	
PLOT SCALE = 100.0000' / in.	CHECKED -	REVISED -	SCALE:			SHEET	OF	SHEETS	STA.	TO	STA.
DATE = 1/25/2013	DATE -	REVISED -	ILLINOIS FED. AID PROJECT			CONTRACT NO. 60V60					

# FOR INFORMATION ONLY



**1100 KIP UNI-DIRECTIONAL POT BEARINGS AT PIER #7 (SPAN 8)**  
(No. Required = 2)

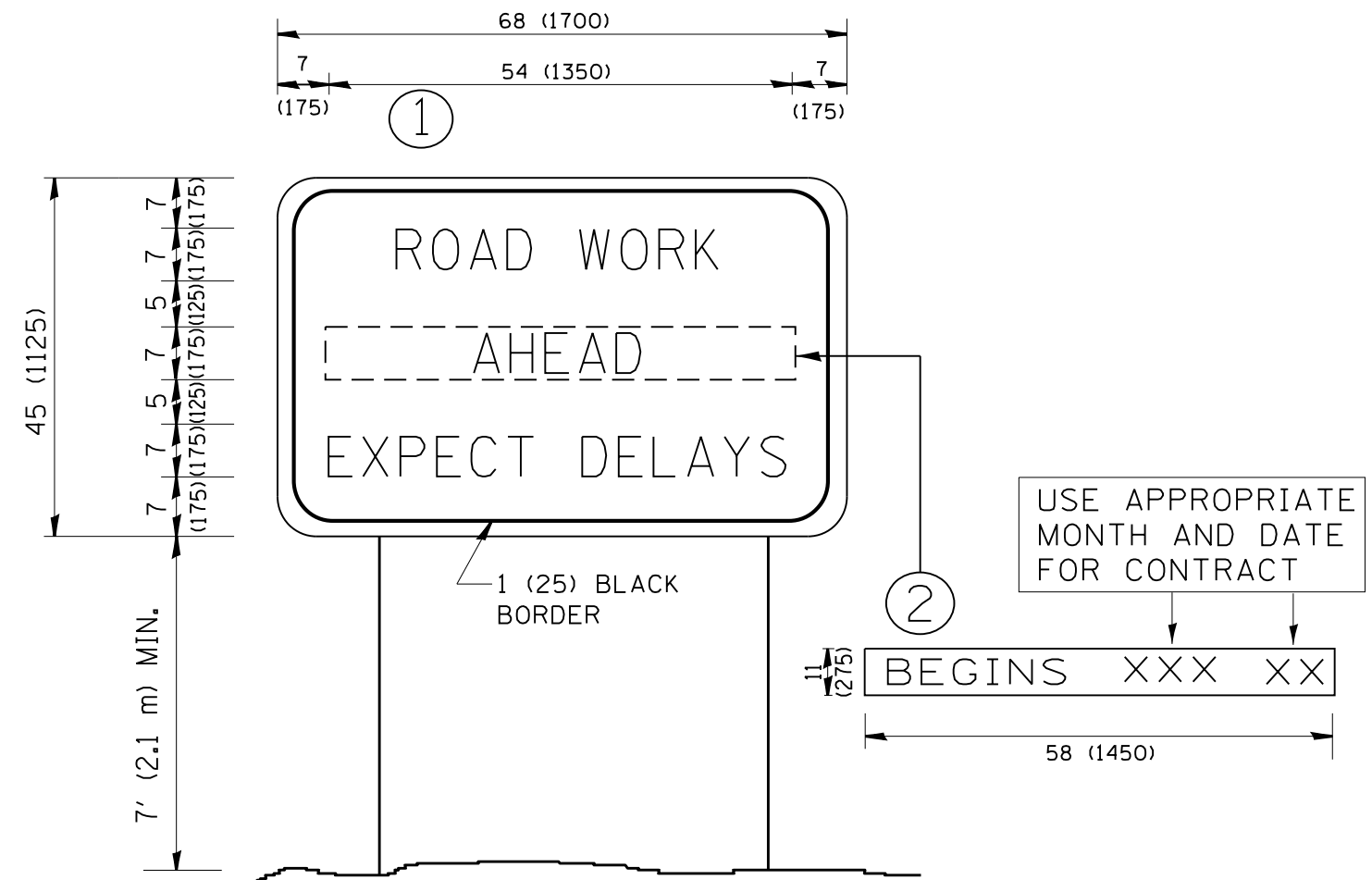


### POT BEARING DATA

		CSSC PIER 7 EXP.
Max. $P$	Kips	710
$E + I$	Kips	180
Total	Kips	890
<b>Long. Loads (Max.)</b>		
Wind	Kips	0
Earthquake	Kips	0
<b>Trans. Loads (Max.)</b>		
Wind	Kips	39
Earthquake	Kips	142
<b>Movement Long. (IN.)</b>		
		1 5/8" E.W.
<b>Movement Tran. (IN.)</b>		
		1/4" E.W.
<b>Earthquake A. bolts</b>		
Long.	Kips	0
Trans.	Kips	142

Maximum sliding coefficient of friction shall not exceed 3 percent.

FILE NAME =	USER NAME = pyrzanowskirb	DESIGNED -	REVISED -	<b>STATE OF ILLINOIS DEPARTMENT OF TRANSPORTATION</b>	<b>POT BEARINGS (PIER 7) IL 83 AT S &amp; S AND I &amp; M CANALS (SN 016-0425)</b>	F.A.P. RTE.	SECTION	COUNTY	TOTAL SHEETS	SHEET NO.	
et:\pw\work\p10dot\pyrzanowskirb\d0315367	D102613-sht-plan.dgn	DRAWN -	REVISED -			344	2012-055BP	COOK	16	15	
*MODELNAME*	PLOT DATE = 1/25/2013	CHECKED -	REVISED -			<b>CONTRACT NO. 60V60</b>					
		DATE -	REVISED -			ILLINOIS FED. AID PROJECT					



**NOTES:**

1. USE BLACK LETTERING ON ORANGE BACKGROUND.
2. ERECT SIGNS IN ADVANCE OF THE LOCATION FOR THE "ROAD CONSTRUCTION AHEAD" SIGN AT LOCATIONS AS DIRECTED BY THE ENGINEER.
3. ERECT SIGN ① WITH INSTALLED PANEL ② ONE WEEK PRIOR TO THE START OF CONSTRUCTION.
4. REMOVE PANEL ② SOON AFTER THE START OF CONSTRUCTION.
5. SEE SPECIAL PROVISION FOR "TEMPORARY INFORMATION SIGNING" FOR ADDITIONAL INFORMATION.
6. ONE SIGN ASSEMBLY EQUALS 25.70 SQ. FT. (2.3 SQ. M.)
7. SHALL BE PAID FOR AS TEMPORARY INFORMATION SIGNING.

ALL DIMENSIONS ARE IN INCHES (MILLIMETERS) UNLESS OTHERWISE SHOWN.

FILE NAME =	USER NAME = pyzanoskirb	DESIGNED -	REVISED - R. MIRS 09-15-97
et:\pw\work\p\idot\pyzanoskirb\d0315367	D102613-sht-plan.dgn	DRAWN -	REVISED - R. MIRS 12-11-97
	PLOT SCALE = 100.0000' / in.	CHECKED -	REVISED - T. RAMMACHER 02-02-99
	PLOT DATE = 1/25/2013	DATE -	REVISED - C. JUCIUS 01-31-07

STATE OF ILLINOIS  
DEPARTMENT OF TRANSPORTATION

ARTERIAL ROAD  
INFORMATION SIGN

SCALE: NONE SHEET NO. 1 OF 1 SHEETS STA. TO STA.

F.A.P. RTE.	SECTION	COUNTY	TOTAL SHEETS	SHEET NO.
344	2012-055BP	COOK	16	16
TC-22		CONTRACT NO. 60V60		
FED. ROAD DIST. NO. 1   ILLINOIS FED. AID PROJECT				