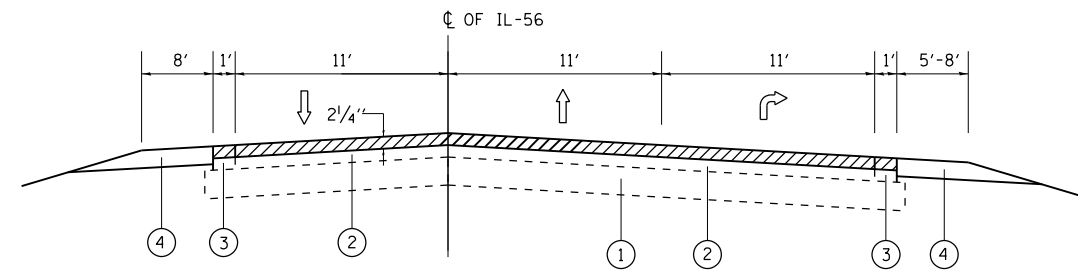
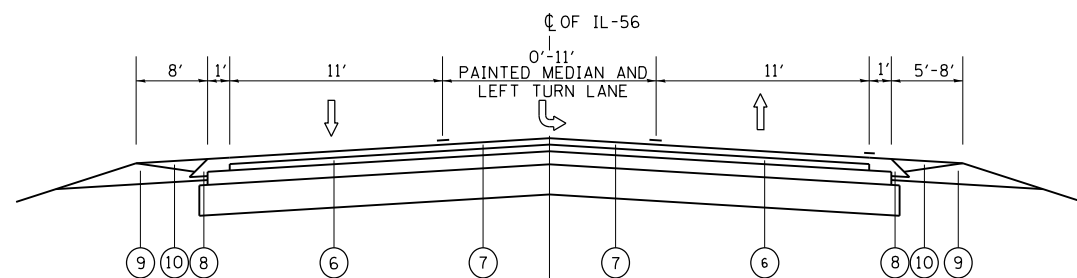


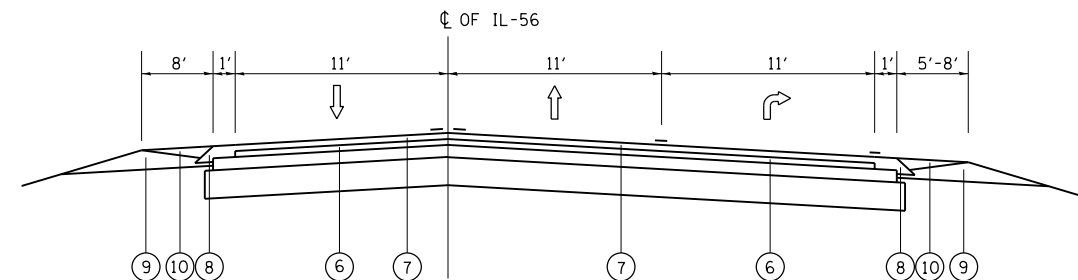
EXISTING TYPICAL SECTION
STA. 11+45 TO STA. 17+75



EXISTING TYPICAL SECTION
STA. 17+75 TO STA. 22+13



PROPOSED TYPICAL SECTION
STA. 11+45 TO STA. 17+75



PROPOSED TYPICAL SECTION
STA. 17+75 TO STA. 22+13

LEGEND

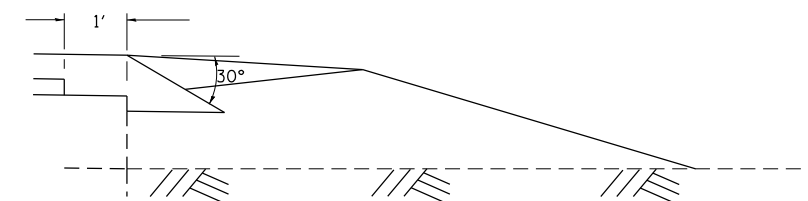
- 1 EXISTING P.C.C. PAVEMENT, 9"±
 - 2 EXISTING HMA SURFACE, 6"±
 - 3 EXISTING HMA SHOULDER
 - 4 EXISTING AGGREGATE SHOULDER
 - 5 PROPOSED HMA SURFACE REMOVAL, 2 1/4"
 - 6 PROPOSED POLYMERIZED LEVELING BINDER (MM), IL-4.75, N50, 3/4"
 - 7 PROPOSED HMA SURFACE COURSE, MIX "D", IL-9.5mm, N70, 1 1/2"
 - 8 PROPOSED SAFETY EDGE. (DETAIL A)
 - # 9 PROPOSED GRATING AND SHAPING EXISTING AGGREGATE SHOULDER
 - # 10 PROPOSED AGGREGATE WEDGE SHOULDER TYPE "B", 2 1/4"
- # THE LOCATIONS FOR PROPOSED GRADING AND SHAPING AND AGGREGATE WEDGE SHOULDERS WILL BE DETERMINED BY THE R.E. IN THE FIELD

NOTE: CONTRACTOR SHALL MILL FIRST, BEFORE PATCHING

HOT-MIX ASPHALT MIXTURE REQUIREMENTS	
MIXTURE USES	DESIGN AIR VOIDS @ N _{DES}
HMA SURFACE COURSE, MIX "D" N70 (IL-9.5 mm), 1 1/2"	4% AT 70 GYR
POLYMERIZED LEVELING BINDER, IL-4.75, N50, 3/4"	3.5% AT 50 GYR
CLASS D PATCHES, (HMA BINDER IL-19.0 mm), 13"	4% AT 70 GYR

NOTE: THE UNIT WEIGHT USED TO CALCULATE ALL HMA SURFACE MIXTURE QUANTITIES IS 112 LBS./ SQ YD./IN.

THE "AC TYPE" FOR POLYMERIZED HMA MIXES SHALL BE "SBS/SBR PG 76-22" AND FOR NON-POLYMERIZED HMA THE "AC TYPE" SHALL BE "PG 64-22" UNLESS MODIFIED BY DISTRICT ONE SPECIAL PROVISIONS. FOR USE OF RECYCLED MATERIALS SEE SPECIAL PROVISIONS.



DETAIL A

FILE NAME =	USER NAME = gaglianob	DESIGNED -	REVISED -
et:\pwork\pwork\gaglianob\d0316270\04113-sh-typical.dgn		DRAWN -	REVISED -
Default	PLOT SCALE = 100.0000' / in.	CHECKED -	REVISED -
	PLOT DATE = 12/3/2012	DATE -	REVISED -

**STATE OF ILLINOIS
DEPARTMENT OF TRANSPORTATION**

**IL. RTE. 56 (BUTTERFIELD RD.)
FROM MITCHEL RD./HART RD. TO FARNSWORTH RD./KIRK RD.
TYPICAL CROSS SECTIONS**

SCALE: SHEET OF SHEETS STA. TO STA.

F.A.P. RTE.	SECTION	COUNTY	TOTAL SHEETS	SHEET NO.
365	60RS-4	KANE	22	5
CONTRACT NO. 60V63			ILLINOIS FED. AID PROJECT	