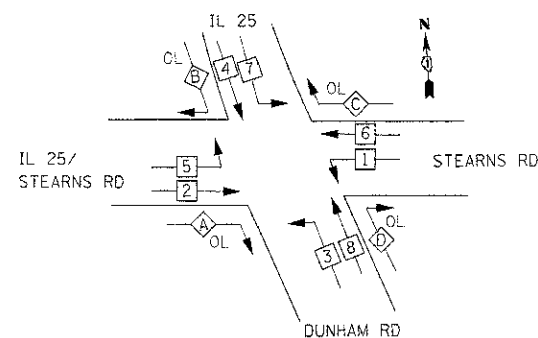


CONTROLLER SEQUENCE



LEGEND

- ◻ SINGLE ENTRY PHASE
- ◉ DUAL ENTRY PHASE
- ◻ OL OVERLAP
- ◻ OL FREE-FLOW RIGHT TURN MOVEMENT TO BE CONTINUOUSLY ON
- NUMBER REFERS TO ASSOCIATED PHASE

OVERLAP LETTER	PERMISSIVE PHASE	PROTECTED PHASE
A	2 +	3
B	CONTINUOUS OVERLAP FREE-FLOW RIGHT	
C	6 +	7
D	8 +	1

PROPOSED PHASE DESIGNATION DIAGRAM

IL 25/STEARNS RD

EXISTING INTERSECTION AND SAMPLING (SYSTEM) DETECTORS

THE END OF THE TRACER CABLE WILL BE CONTINUOUS AND EXTEND INTO THE CONTROLLER CABINET

INTERCONNECT TO GILBERT ST.

TRACER CABLE

CONSTRUCTION NOTES:

- ① REBUILD EXISTING LED SIGNAL HEAD FROM A 5-SECTION LED SIGNAL HEAD TO A 3-SECTION LED SIGNAL HEAD.

SCHEDULE OF QUANTITIES

ITEM	UNIT	TOTAL
UNDERGROUND CONDUIT, GALVANIZED STEEL, 2" DIA.	FOOT	172
UNDERGROUND CONDUIT, GALVANIZED STEEL, 2 1/2" DIA.	FOOT	107
UNDERGROUND CONDUIT, GALVANIZED STEEL, 4" DIA.	FOOT	93
HANDHOLE	EACH	1
ELECTRIC CABLE IN CONDUIT, SIGNAL NO. 14 2C	FOOT	1,977
ELECTRIC CABLE IN CONDUIT, SIGNAL NO. 14 5C	FOOT	999
ELECTRIC CABLE IN CONDUIT, EQUIPMENT GROUNDING CONDUCTOR, NO. 6 1C	FOOT	967
TRAFFIC SIGNAL POST, GALVANIZED STEEL 14 FT.	EACH	2
CONCRETE FOUNDATION, TYPE A	FOOT	8
DRILL EXISTING HANDHOLE	EACH	3
TRAFFIC SIGNAL BACKPLATE, LOUVERED, ALUMINUM	EACH	1
TEMPORARY TRAFFIC SIGNAL INSTALLATION	EACH	1
REBUILD EXISTING SIGNAL HEAD, LED	EACH	2
MODIFY EXISTING CONTROLLER	EACH	1
REMOVE ELECTRIC CABLE FROM CONDUIT	FOOT	665
REMOVE EXISTING TRAFFIC SIGNAL EQUIPMENT	EACH	1
REBUILD EXISTING HANDHOLE	EACH	1
REMOVE EXISTING HANDHOLE	EACH	1
REMOVE EXISTING CONCRETE FOUNDATION	EACH	1
TEMPORARY TRAFFIC SIGNAL TIMING	EACH	1

ELECTRIC CABLE IN CONDUIT, LEAD-IN, NO. 14 1 PAIR

EXISTING INTERSECTION AND SAMPLING (SYSTEM) DETECTORS

EXISTING INTERSECTION AND SAMPLING (SYSTEM) DETECTORS

STEARNS RD

NUMBER OF GROUND CABLES AS PER PLAN

EXISTING MASTER CONTROLLER

EXISTING BIKE PATH

DUNHAM RD

EXISTING INTERSECTION AND SAMPLING (SYSTEM) DETECTORS

CABLE PLAN

I.D.O.T. TRAFFIC SIGNAL INSTALLATION ELECTRICAL SERVICE REQUIREMENTS				TOTAL WATTAGE
TYPE	NO. LAMPS	WATTAGE LED	%OPERATION	
SIGNAL (RED)	20	17	0.50	170
(YELLOW)	20	25	0.25	125
(GREEN)	20	15	0.25	75
ARROW	12	12	0.10	14.4
FREEFLOW ARROW	2	15	1.00	30.0
CONTROLLER	1	100	1.00	100.0
FLASHER			0.50	

ENERGY COSTS TO: TOTAL = \$14.4

ILLINOIS DEPARTMENT OF TRANSPORTATION
 201 W. CENTER COURT
 SCHAMBURG, ILLINOIS 60196
 ENERGY SUPPLY CONTACT: MARTY RUBIN
 PHONE: 847-608-2400
 COMPANY: COMED

FILE NAME =	DESIGNED - BC	REVISED - ADDENDUM 04/15/2013
...:\DI\63598-sht-IL25-Dun-ts-cable.dgn	DRAWN - TMB	REVISED -
USER NAME = toddblark	CHECKED - MPM	REVISED -
PLOT DATE = 4/15/2013	DATE - 01/18/2013	REVISED -



STATE OF ILLINOIS
 DIVISION OF TRANSPORTATION

SCHEDULE OF QUANTITIES, CABLE PLAN, AND PHASE DESIGNATION DIAGRAM
 IL 25/STEARNS RD AT IL 25/DUNHAM RD
 SCALE: 1"=20' SHEET NO. 39 OF 49 SHEETS STA. TO STA.

F.A.P. RTE.	SECTION	COUNTY	TOTAL SHEETS	SHEET NO.
36	06-00214-18-RP	KANE	45	250
CONTRACT NO. 63598			ILLINOIS FED. AID PROJECT	