

INDEX OF SHEETS

SHEET NO.	DESCRIPTION
1	COVER SHEET
2-4	GENERAL NOTES, INDEX OF STATE STANDARDS, AND COMMITMENTS
5-11	SUMMARY OF QUANTITIES
12-14	TYPICAL SECTIONS
15-16	SCHEDULE OF QUANTITIES
17-18	ALIGNMENT, TIES AND BENCHMARKS
19-25	REMOVAL PLAN
26-36	PLAN AND PROFILE
37-39	EROSION AND SEDIMENT CONTROL
40-51	DRAINAGE AND UTILITY PLAN
52-61	PLAT OF HIGHWAYS
62	JOINTING AND GRADING PLAN
63-65	PAVEMENT MARKING AND SIGNING PLAN
66-68	LANDSCAPING PLAN
69-84	TRAFFIC SIGNAL PLANS
85-88	LIGHTING PLANS
89-111	STRUCTURAL PLANS
112-137	DETAILS
138-167	CROSS SECTIONS

STATE OF ILLINOIS

DEPARTMENT OF TRANSPORTATION

DIVISION OF HIGHWAYS

PLANS FOR PROPOSED FEDERAL AID HIGHWAY

**FAU ROUTE 4068 (KREUTZER ROAD)
ILLINOIS ROUTE 47 TO MAIN STREET
NEW ROADWAY CONSTRUCTION
AND INTERSECTION IMPROVEMENT
SECTION 07-00031-00-PV
PROJECT NO. M-8003(940)
VILLAGE OF HUNTLEY
KANE AND McHENRY COUNTIES**

C-91-189-08

LOCATION MAP
R 7 E
3RD PM

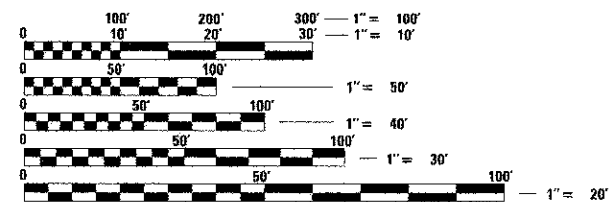


TRAFFIC DATA

	ADT (2030)	DESIGN SPEED	POSTED SPEED
KREUTZER ROAD (MAIN STREET TO ILLINOIS RTE 47)	11,000	40 MPH	35 MPH
KREUTZER ROAD (ILLINOIS RTE 47 TO SMITH DRIVE)	28,000	40 MPH	35 MPH
ILLINOIS RTE 47 (REGENCY PARKWAY TO KREUTZER ROAD)	46,000	50 MPH	40 MPH
ILLINOIS RTE 47 (KREUTZER ROAD TO MAIN STREET)	40,000	50 MPH	40 MPH

DESIGN DESIGNATION

KREUTZER ROAD - 1600(30) COLLECTOR 1.53 (FD-20)

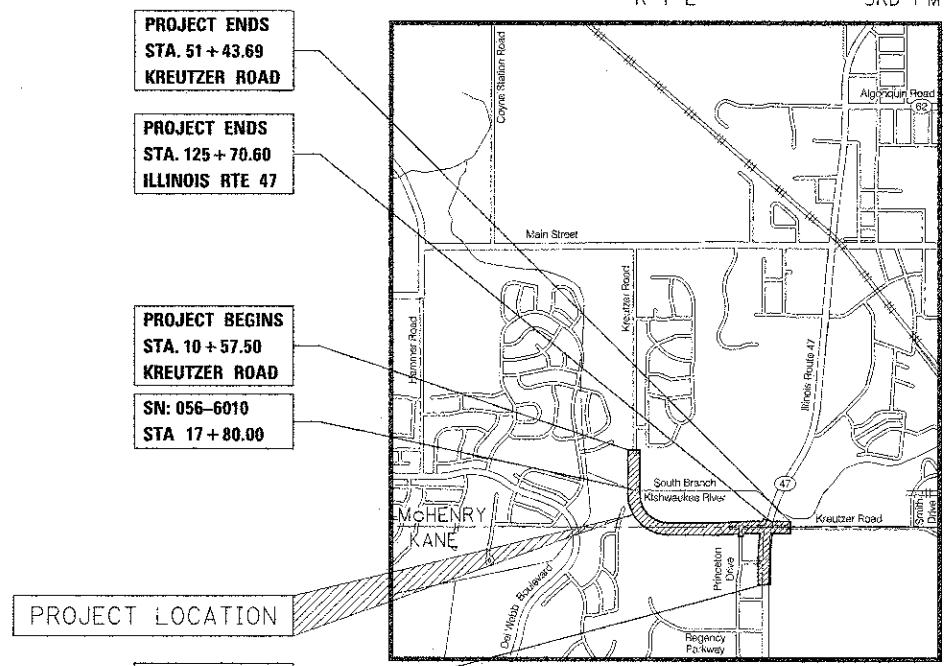


FULL SIZE PLANS HAVE BEEN PREPARED USING STANDARD ENGINEERING SCALES. REDUCED SIZED PLANS WILL NOT CONFORM TO STANDARD SCALES. IN MAKING MEASUREMENTS ON REDUCED PLANS, THE ABOVE SCALES MAY BE USED.

J.U.L.I.E.
JOINT UTILITY LOCATION INFORMATION FOR EXCAVATION
1-800-892-0123
OR 811

PLANS PREPARED BY:

450 E. Devon Ave., Suite 300 - Itasca, Illinois 60143
Tel: 630.773.3600 - Fax: 630.773.3975
www.civiltechinc.com



PROJECT LOCATION

PROJECT ENDS
STA. 51 + 43.69
KREUTZER ROAD

PROJECT ENDS
STA. 125 + 70.60
ILLINOIS RTE 47

PROJECT BEGINS
STA. 10 + 57.50
KREUTZER ROAD

SN: 056-6010
STA 17 + 80.00

PROJECT BEGINS
STA. 110 + 98.50
ILLINOIS RTE 47

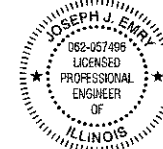
McHENRY COUNTY - GRAFTON TOWNSHIP
KANE COUNTY - RUTLAND TOWNSHIP



PROJECT LENGTH:
KREUTZER ROAD - 4,134.42 FT. = 0.783 MILE
ILLINOIS RTE 47 - 1,472.10 FT. = 0.279 MILE



Gary A. Blazek 11/30/2013
REGISTERED P.E., STATE OF ILLINOIS EXPIRES
SHEET NOS: 1-51, 62-68, 112-167



Joseph J. Emery 4/30/13
REGISTERED P.E., STATE OF ILLINOIS EXPIRES
SHEET NOS: 69-84



Derek N. Mall 8/29/12 11/30/13
REGISTERED P.E., STATE OF ILLINOIS EXPIRES
SHEET NOS: 85-88



Gregory J. Hattestad 8/29/12 11/30/12
REGISTERED S.E., STATE OF ILLINOIS EXPIRES
SHEET NOS: 89-111

STATE OF ILLINOIS
DEPARTMENT OF TRANSPORTATION
DIVISION OF HIGHWAYS

APPROVED *Oct 27 2012*
[Signature]
VILLAGE MANAGER, VILLAGE OF HUNTLEY

PASSED *November 8 2012*
[Signature]
DISTRICT ONE ENGINEER OF LOCAL ROADS & STREETS

RELEASING FOR BID
BASED ON LIMITED
REVIEW *November 8 2012*
[Signature]
DEPUTY DIRECTOR OF HIGHWAYS, REGION ONE ENGINEER

**PRINTED BY THE AUTHORITY
OF THE STATE OF ILLINOIS**

PROGRAM AND OFFICE ENGINEER: CHARLES F. RIDDLE, P.E. 847-705-4406 SCHAUMBURG, IL

CONTRACT NO. 63743