

KREUTZER ROAD  
PROPOSED  $\phi$  COORDINATE TABLE

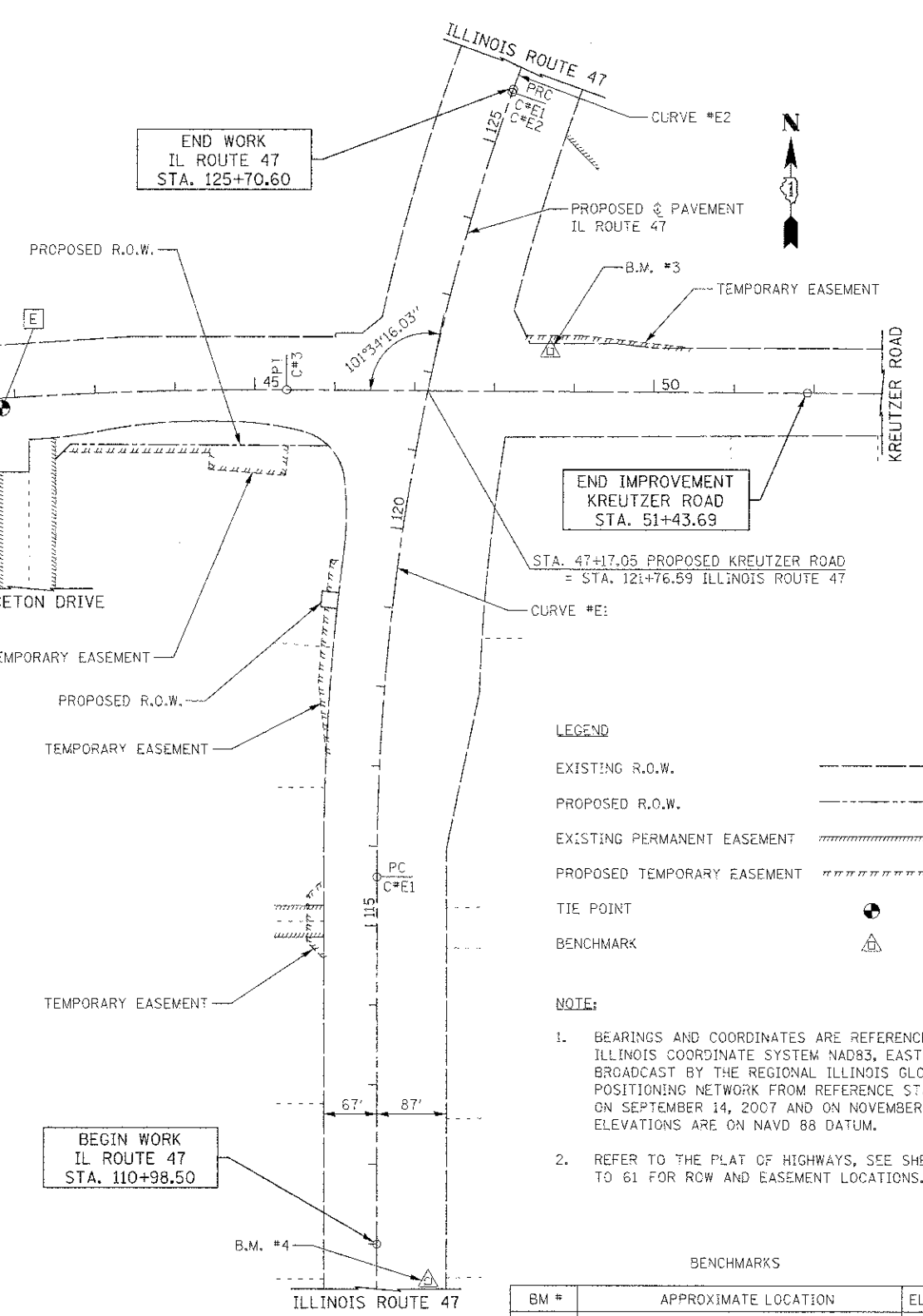
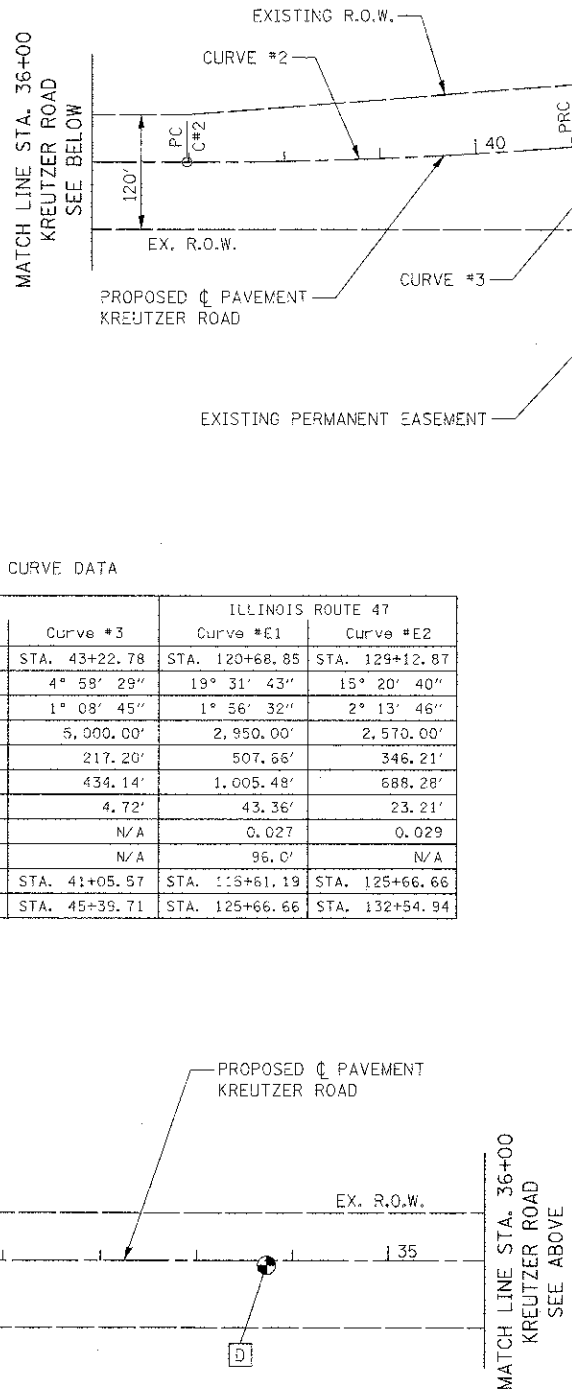
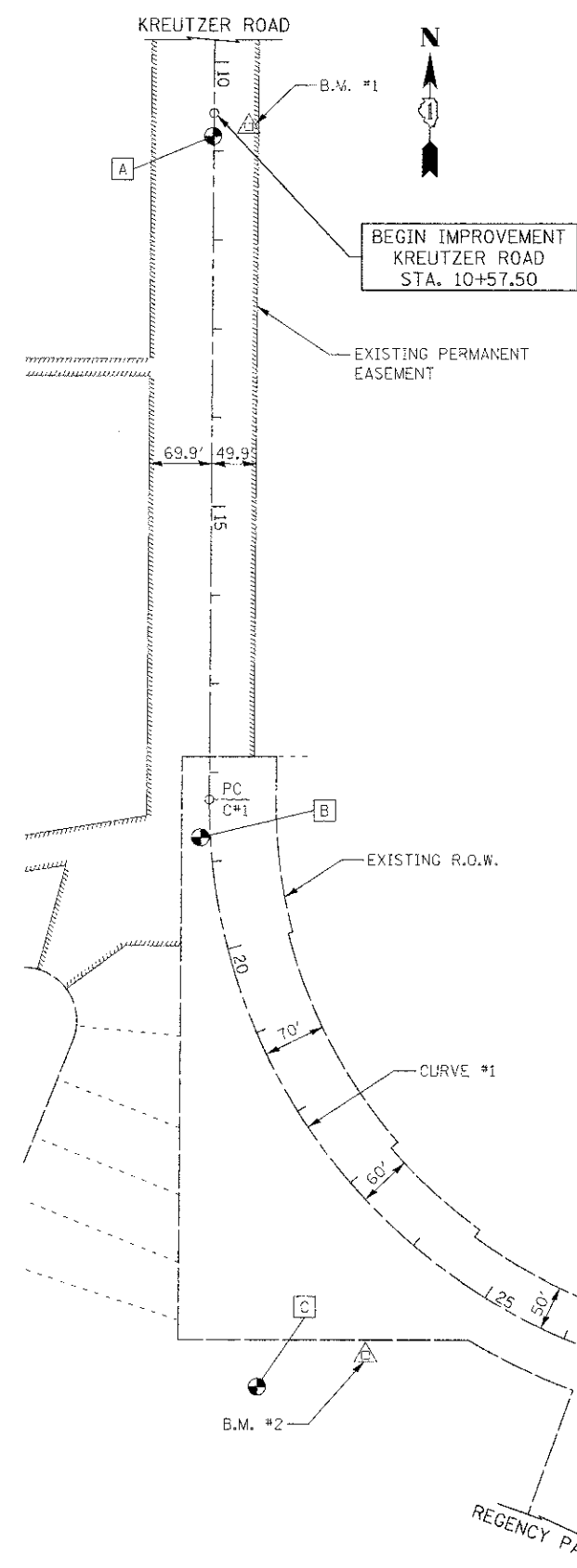
STATION	NORTHING	EASTING	TYPE
9+00.00	2,000,217.662	954,841.554	POT
18+29.89	1,999,287.786	954,836.772	PC
24+88.26	1,998,629.419	954,833.387	PI
28+62.13	1,998,629.418	955,491.763	PT
36+98.41	1,998,629.418	956,328.048	PC
39+02.11	1,998,629.418	956,531.741	PI
41+05.57	1,998,645.987	956,734.760	PRC
43+22.78	1,998,663.655	956,951.245	PI
45+39.71	1,998,662.483	957,168.446	PT
53+50.00	1,998,658.112	957,978.724	POT

ILLINOIS ROUTE 47  
PROPOSED  $\phi$  COORDINATE TABLE

STATION	NORTHING	EASTING	TYPE
110+00.00	1,997,489.306	957,283.307	POT
115+61.19	1,998,050.491	957,282.598	PC
120+68.85	1,998,558.154	957,281.956	PI
125+66.66	1,999,036.828	957,451.052	PCC
129+12.87	1,998,363.268	957,566.370	PI
132+54.94	1,999,647.556	957,763.961	PT
134+55.29	1,999,812.072	957,878.306	POT

CURVE DATA

P. I.	KREUTZER ROAD			ILLINOIS ROUTE 47	
	Curve #1	Curve #2	Curve #3	Curve #E1	Curve #E2
STA.	24+88.26	39+02.11	43+22.78	120+68.85	129+12.87
$\Delta$	90° 17' 41"	4° 39' 57"	4° 58' 29"	19° 31' 43"	15° 20' 40"
D	8° 44' 51"	1° 08' 45"	1° 08' 45"	1° 56' 32"	2° 13' 46"
R	655.00'	5,000.00'	5,000.00'	2,950.00'	2,570.00'
T	658.38'	203.69'	217.20'	507.66'	346.21'
L	1,032.24'	407.16'	434.14'	1,005.48'	688.28'
E	273.70'	4.15'	4.72'	43.36'	23.21'
e	N/A	N/A	N/A	0.027	0.029
T. R.	N/A	N/A	N/A	96.0'	N/A
P. C.	STA. 18+29.89	STA. 36+98.41	STA. 41+05.57	STA. 115+61.19	STA. 125+66.66
P. T.	STA. 28+62.13	STA. 41+05.57	STA. 45+39.71	STA. 125+66.66	STA. 132+54.94



- LEGEND**
- EXISTING R.O.W. ————
  - PROPOSED R.O.W. - - - - -
  - EXISTING PERMANENT EASEMENT ————
  - PROPOSED TEMPORARY EASEMENT ————
  - TIE POINT ●
  - BENCHMARK ▲
- NOTE:**
- BEARINGS AND COORDINATES ARE REFERENCED TO THE ILLINOIS COORDINATE SYSTEM NAD83, EAST ZONE, AS BROADCAST BY THE REGIONAL ILLINOIS GLOBAL POSITIONING NETWORK FROM REFERENCE STATION 0027 ON SEPTEMBER 14, 2007 AND ON NOVEMBER 29, 2007. ELEVATIONS ARE ON NAVD 88 DATUM.
  - REFER TO THE PLAT OF HIGHWAYS, SEE SHEETS 52 TO 61 FOR ROW AND EASEMENT LOCATIONS.

**BENCHMARKS**

BM #	APPROXIMATE LOCATION	ELEVATION
1	CROSS CUT (SET) IN WEST EDGE OF RIM OF SANITARY MANHOLE	875.54
2	CROSS CUT (SET) IN SOUTH EDGE OF RIM OF SANITARY MANHOLE	873.44
3	CROSS CUT IN SOUTHWEST FLANGE BOLT OF FIRE HYDRANT	882.74
4	CROSS CUT (SET) IN SOUTHEAST FLANGE BOLT OF FIRE HYDRANT	890.50

