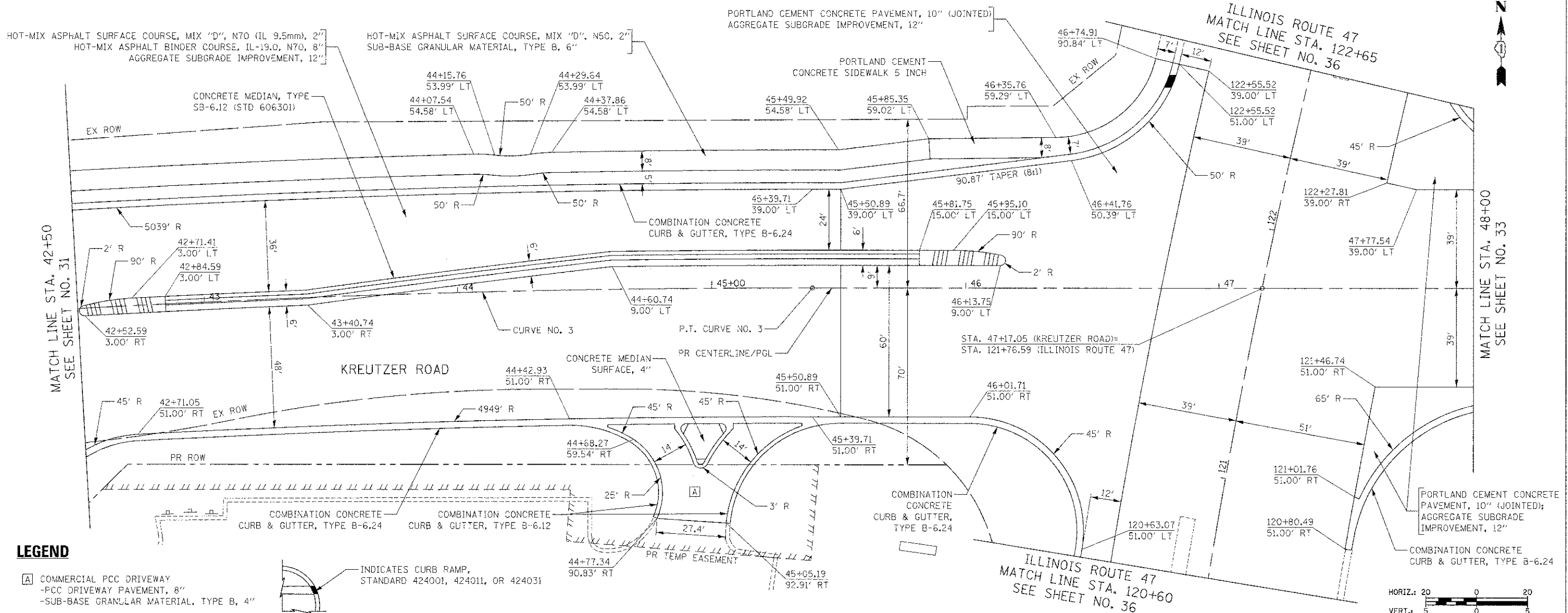


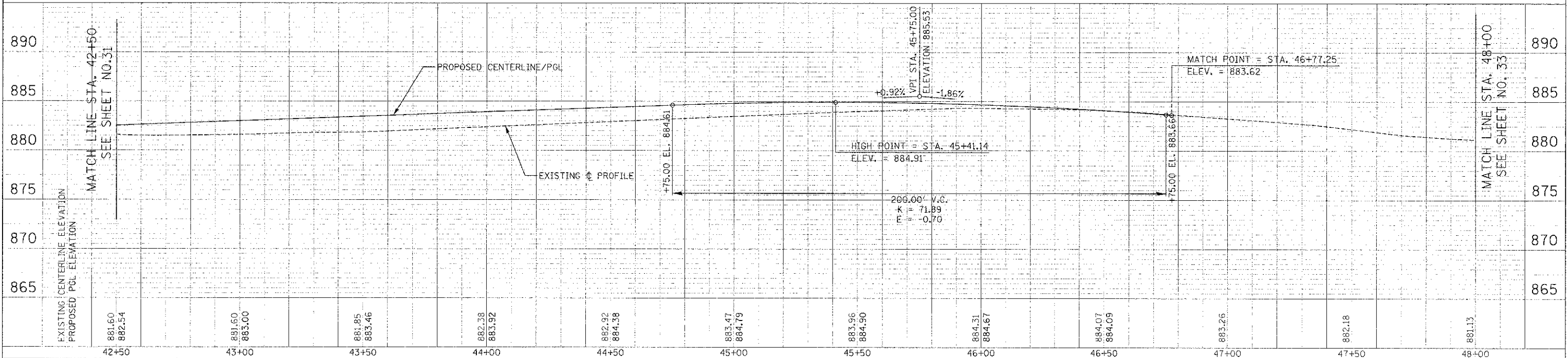
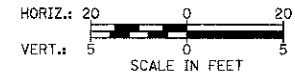
PLAN	DATE
BY	
CHECKED	
NOTED	
NO.	
NO.	
NO.	
NO.	
NO.	

PROFILE	DATE
BY	
CHECKED	
NOTED	
NO.	
NO.	
NO.	
NO.	
NO.	



**LEGEND**

- [A] COMMERCIAL PCC DRIVEWAY  
-PCC DRIVEWAY PAVEMENT, 8"  
-SUB-BASE GRANULAR MATERIAL, TYPE B, 4"
- [Symbol] INDICATES CURB RAMP,  
STANDARD 424001, 424011, OR 424031



FILE NAME = ...2473_P&P_07.dgn	USER NAME = bas	DESIGNED - BAS	REVISED -	<b>STATE OF ILLINOIS DEPARTMENT OF TRANSPORTATION</b>	<b>PLAN AND PROFILE</b>	F.A.U. RTE. 4068	SECTION 07-0031-00-PV	COUNTY McHENRY	TOTAL SHEETS 167	SHEET NO. 7 OF 11 SHEETS	STA. 42+50 TO STA. 48+00	CONTRACT NO. 63743
PLOT SCALE = 20.0000' / 1"	CHECKED - GAB	DATE - 10/22/12	REVISED -			PED. ROAD DIST. NO. 1	ILLINOIS	FED. AID PROJECT XXX				
PLOT DATE = 12/18/2012	DATE - 10/22/12	REVISED -	REVISED -									