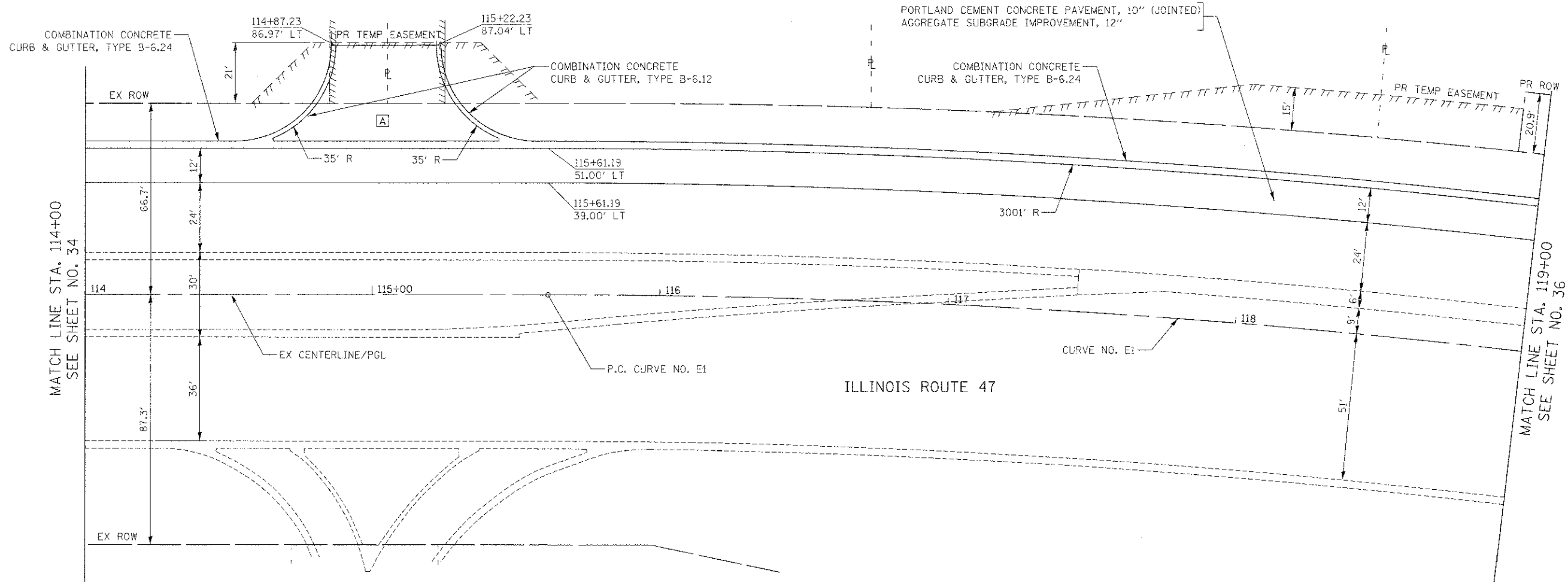


PLAN	DATE
BY	
CHECKED	
NO. OF WAY	
NO.	

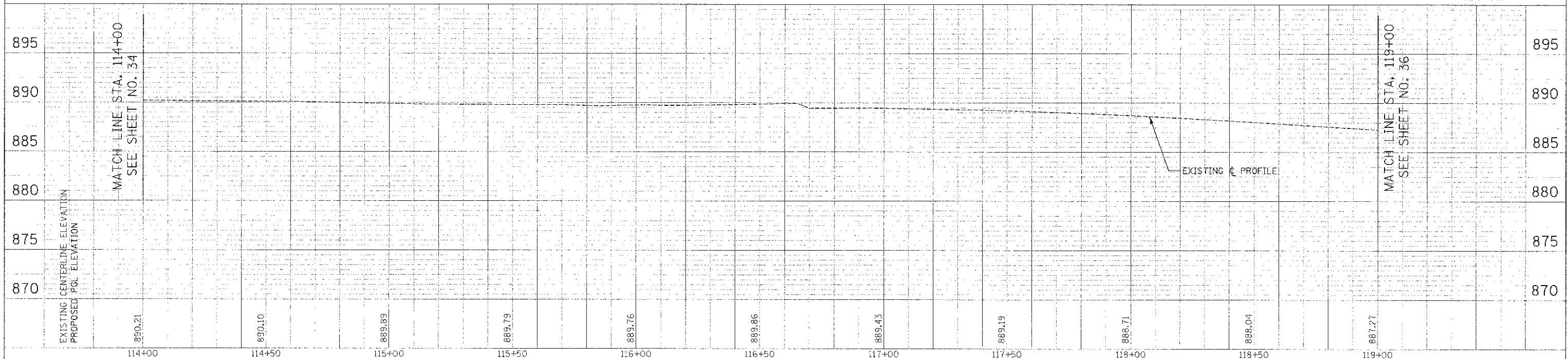
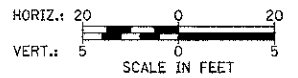
PROFILE	DATE
BY	
CHECKED	
NO. OF WAY	
NO.	



CURVE NO. E1
 PI STA. = 120+68.85
 $\Delta = 19^\circ 31' 43''$ (RT)
 $D = 1^\circ 56' 32''$
 $R = 2,950.00'$
 $T = 507.66'$
 $L = 1,005.48'$
 $E = 43.36'$
 $e = 0.027$
 $T.R. = 96.0'$
 $S.E. RUN = 129.6'$
 $P.C. STA = 115+61.19$
 $P.T. STA = 125+66.66$

LEGEND

- [A] COMMERCIAL PCC DRIVEWAY
 -PCC DRIVEWAY PAVEMENT, 8"
 -SUB-BASE GRANULAR MATERIAL, TYPE B. 4"



FILE NAME = ...2473_P&P_10.dgn	USER NAME = bas	DESIGNED - BAS	REVISED -	STATE OF ILLINOIS DEPARTMENT OF TRANSPORTATION	PLAN AND PROFILE	F.A.U. RTE. 4068	SECTION 07-0031-00-PV	COUNTY MCHENRY	TOTAL SHEETS 167	SHEET NO. 10	OF 11 SHEETS	STA. 114+00 TO STA. 119+00	FED. ROAD DIST. NO. ILLINOIS	FED. AID PROJECT XXX-XXXX
PLDT SCALE = 20,0000' / in.	CHECKED - GAB	REVISED -	REVISED -			CONTRACT NO. 63743								
PLDT DATE = 12/18/2012	DATE = 10/22/12	REVISED -	REVISED -											