

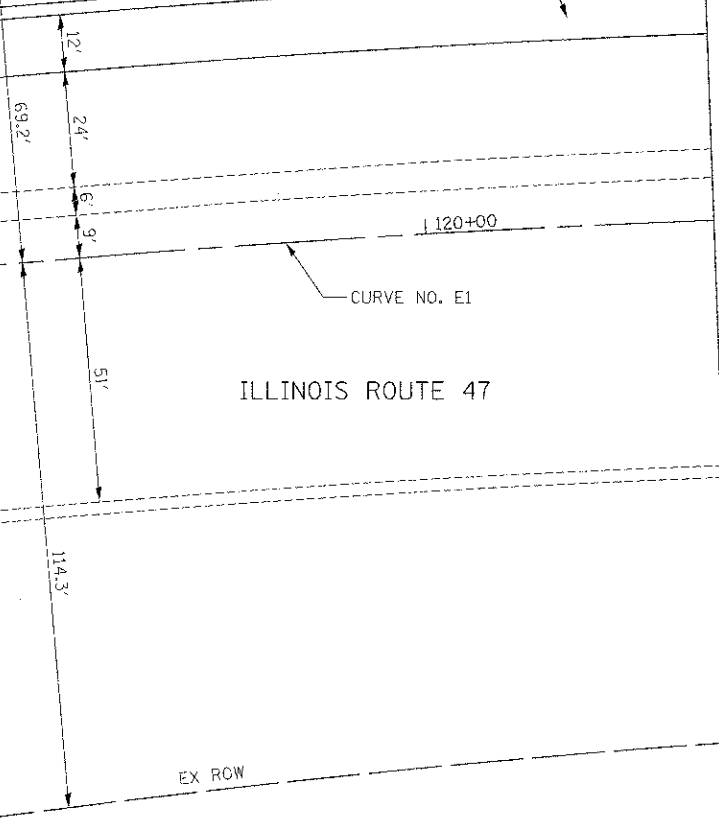
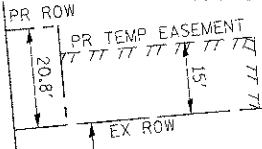
PLAN	DESIGNED	DATE
NOTE BOOK	ALIGNED	
NO.	CHECKED	
	BY	
	DATE	

PROFILE	DESIGNED	DATE
NOTE BOOK	PLOTTED	
NO.	GRADES CHECKED	
	BY	
	DATE	

PORTLAND CEMENT CONCRETE PAVEMENT, 10" (JOINTED)  
AGGREGATE SUBGRADE IMPROVEMENT, 12"

COMBINATION CONCRETE  
CURB & GUTTER, TYPE B-6.24

MATCH LINE STA. 119+00  
SEE SHEET NO. 35



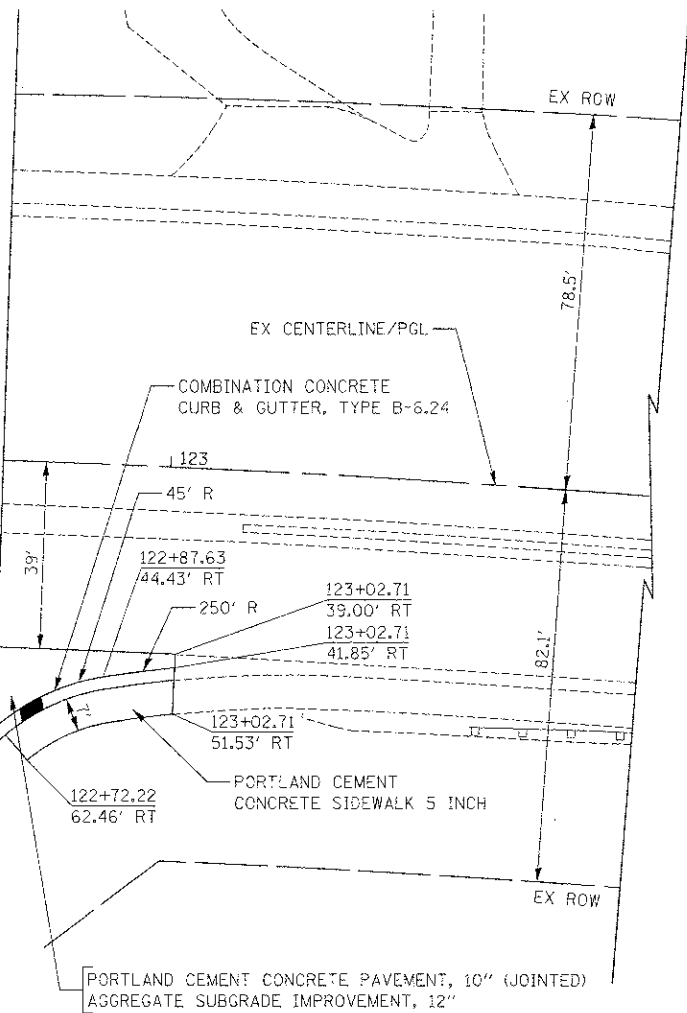
ILLINOIS ROUTE 47

MATCH LINE STA. 120+60  
SEE SHEET NO. 32

STA. 47+17.05 (KREUTZER ROAD)=  
STA. 121+76.59 (ILLINOIS ROUTE 47)

KREUTZER ROAD

MATCH LINE STA. 122+65  
SEE SHEET NO. 32

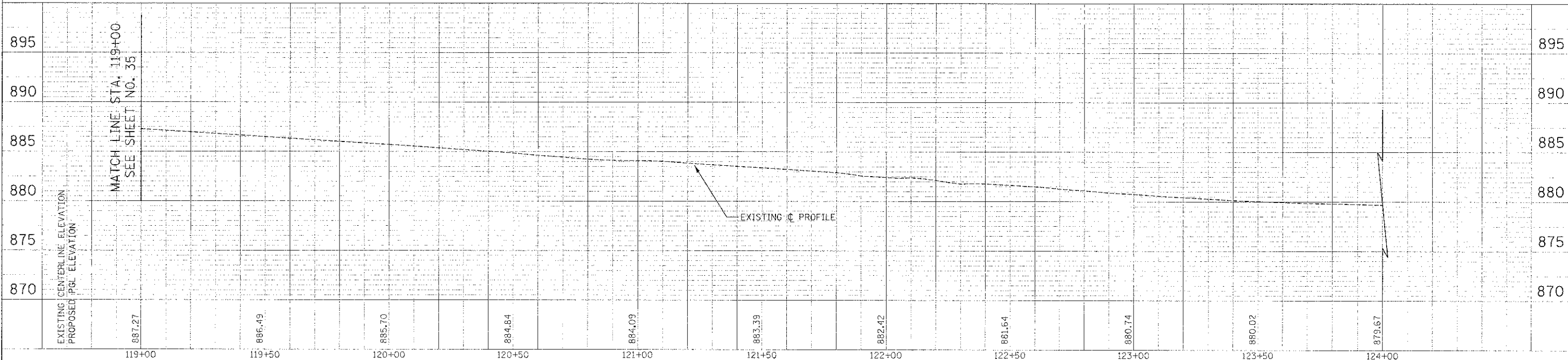
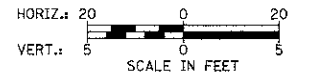
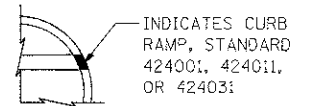


COMBINATION CONCRETE  
CURB & GUTTER, TYPE B-6.24

PORTLAND CEMENT  
CONCRETE SIDEWALK 5 INCH

PORTLAND CEMENT CONCRETE PAVEMENT, 10" (JOINTED)  
AGGREGATE SUBGRADE IMPROVEMENT, 12"

**LEGEND**



FILE NAME =	USER NAME =	DESIGNED =	REVISED =	<b>STATE OF ILLINOIS DEPARTMENT OF TRANSPORTATION</b>	<b>PLAN AND PROFILE</b>	F.A.U. R.T.E.	SECTION	COUNTY	TOTAL SHEET SHEETS NO.
...2473_P&P_11.dgn	bas	DRAWN =	REVISED =			4068	07-0031-00-PV	McHENRY	167 36
		CHECKED =	REVISED =			CONTRACT NO. 63743			
		DATE =	REVISED =			FED. ROAD DIST. NO. 1 ILLINOIS FED. AID PROJECT XXX			