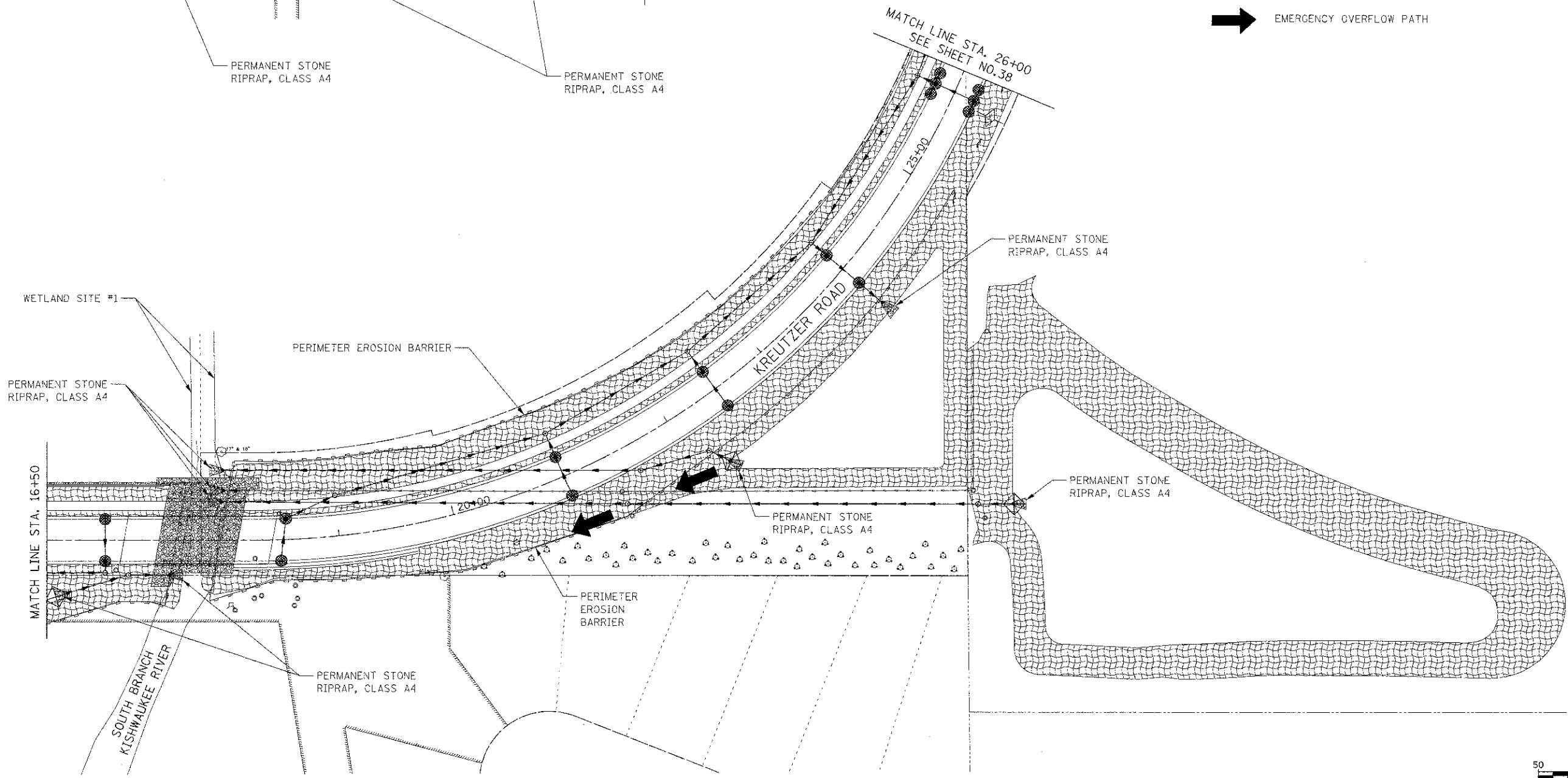


- LEGEND
- EROSION CONTROL BLANKET AND TEMPORARY EROSION CONTROL SEEDING
 - INLET FILTER AND PERIMETER EROSION BARRIER PLACED AROUND OPEN GRATE STRUCTURE IN ACCORDANCE WITH 280001-05
 - INLET FILTERS
 - TEMPORARY DITCH CHECKS
 - EMERGENCY OVERFLOW PATH



WETLAND SITE #1
PERMANENT STONE RIPRAP, CLASS A4

MATCH LINE STA. 16+50

SOUTH BRANCH
KISHWAUKEE RIVER



FILE NAME =
...V2473.ERD.01.dgn

USER NAME = bas
DESIGNED - BAS
DRAWN - BAS
CHECKED - GAB
DATE - 10/22/12

REVISED -
REVISED -
REVISED -
REVISED -

STATE OF ILLINOIS
DEPARTMENT OF TRANSPORTATION

EROSION AND SEDIMENT CONTROL PLAN

SCALE: 1" = 50' SHEET NO. 1 OF 3 SHEETS STA. 10+57 TO STA. 26+00

F.A.U. RTE.	SECTION	COUNTY	TOTAL SHEETS	SHEET NO.
4068	07-0031-00-PV	McHENRY	167	37
FED. ROAD DIST. NO. 1 ILLINOIS			CONTRACT NO. 63743	
FED. AID PROJECT XXX-----				