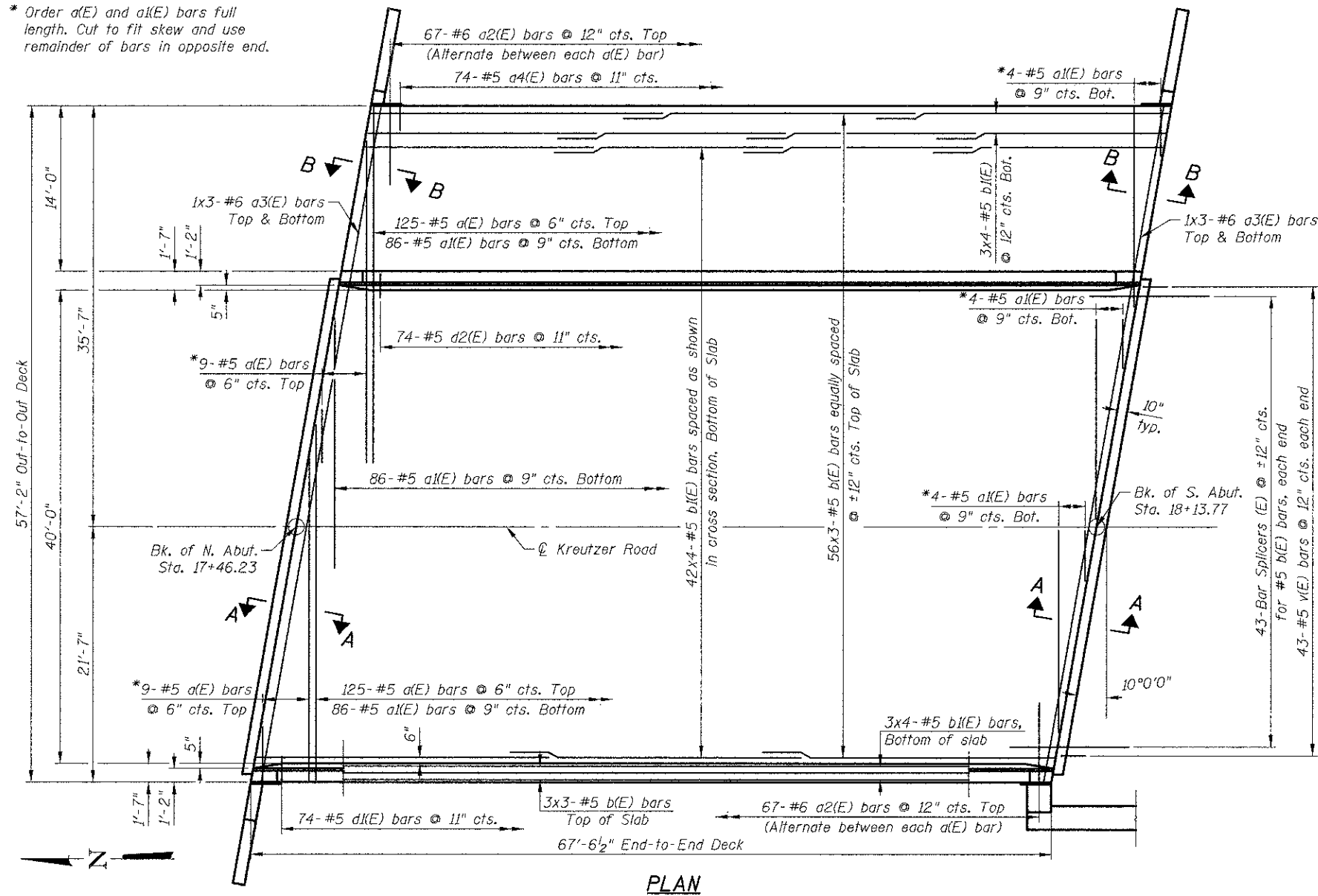


* Order a(E) and a1(E) bars full length. Cut to fit skew and use remainder of bars in opposite end.

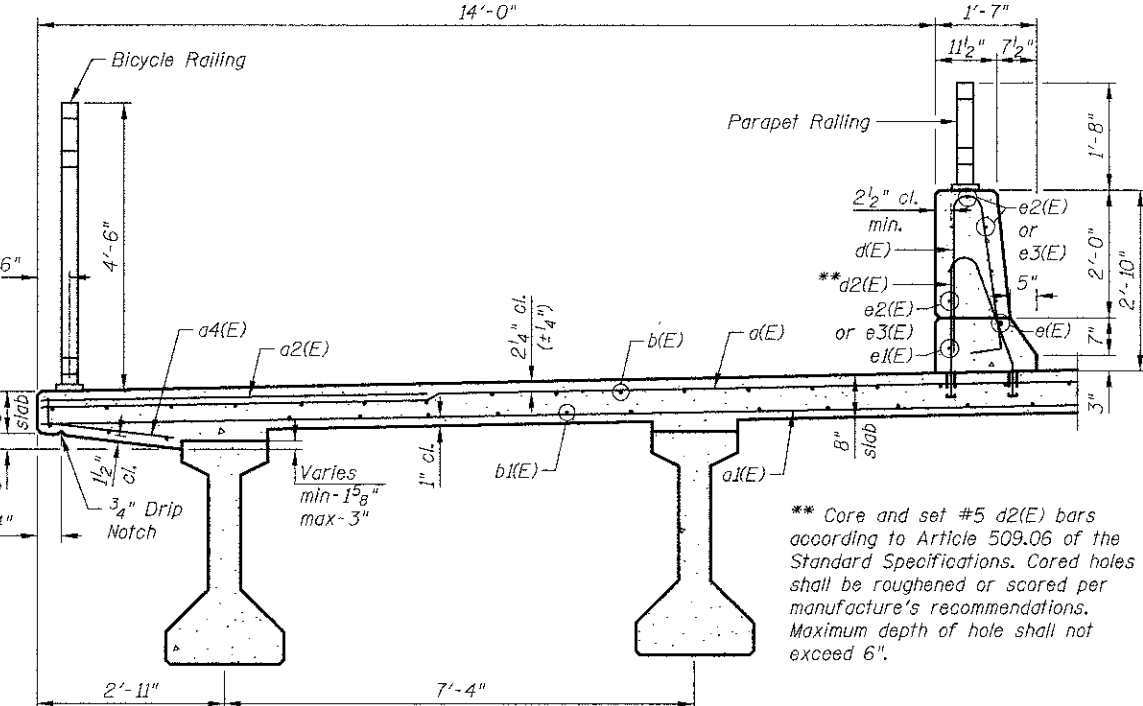


PLAN

MINIMUM BAR LAP

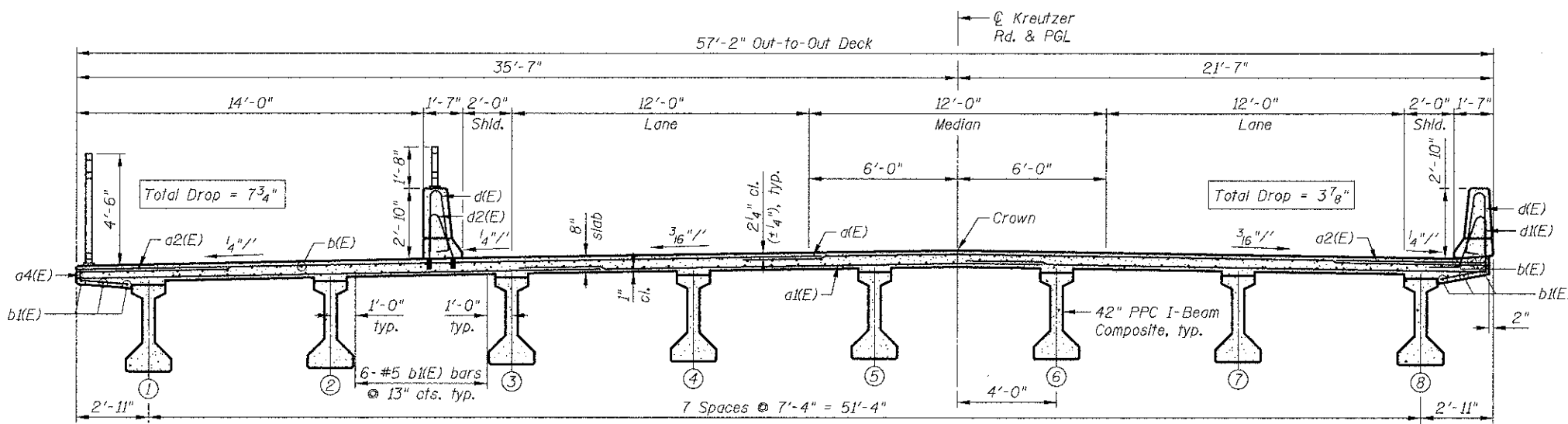
(Deck)
#5 bar = 3'-3"
#6 bar = 3'-10"

Notes:
See Sheet S7 for superstructure details and Bill of Material.
See Sheet S7 for Sections A-A & B-B and diaphragm details.
See sheet S7 for parapet reinforcement.
See sheet S16 for Bar Splicer details.
Bars indicated thus 20x3-#5 etc. indicates 20 lines of bars with 3 lengths per line.



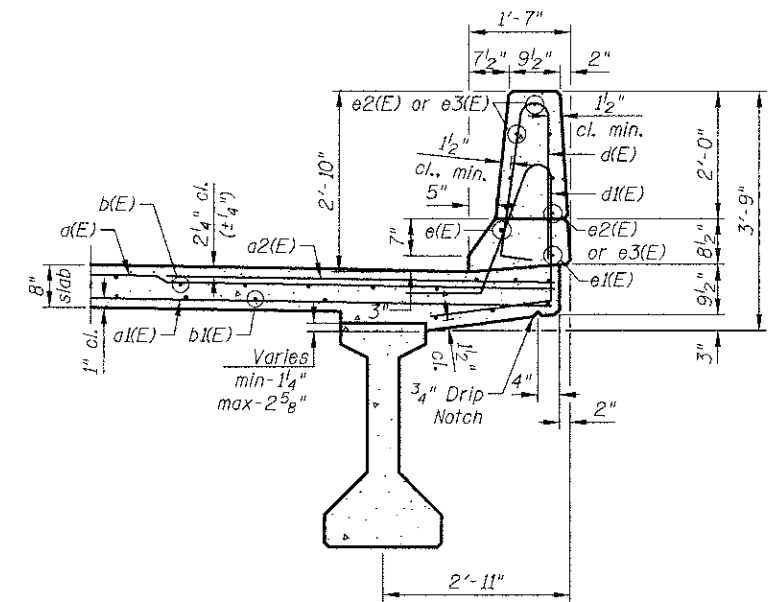
SECTION THRU EAST PARAPET

(All edges have a 3/4" chamfer)



CROSS SECTION

(Looking South)



SECTION THRU WEST PARAPET

(All edges have a 3/4" chamfer)

68655 PM
 10/18/2012
 I:\2473\cod\sheet\7-Structures\Bridges\06_Superstructure.dgn