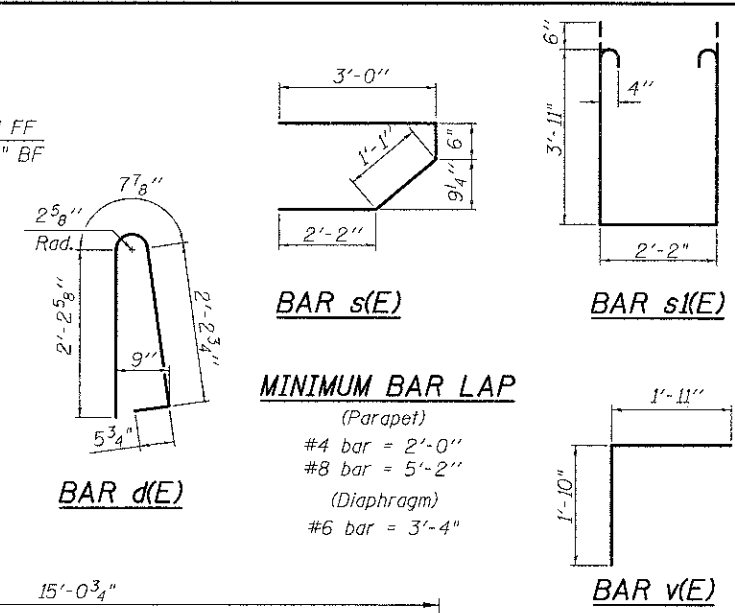


INSIDE ELEVATION OF WEST PARAPET
(Looking West)

East Parapet is mirror image of West Parapet.
* Field cut to fit and use remainder of bars in opposite end of parapet.



BAR s(E)

BAR s(E)

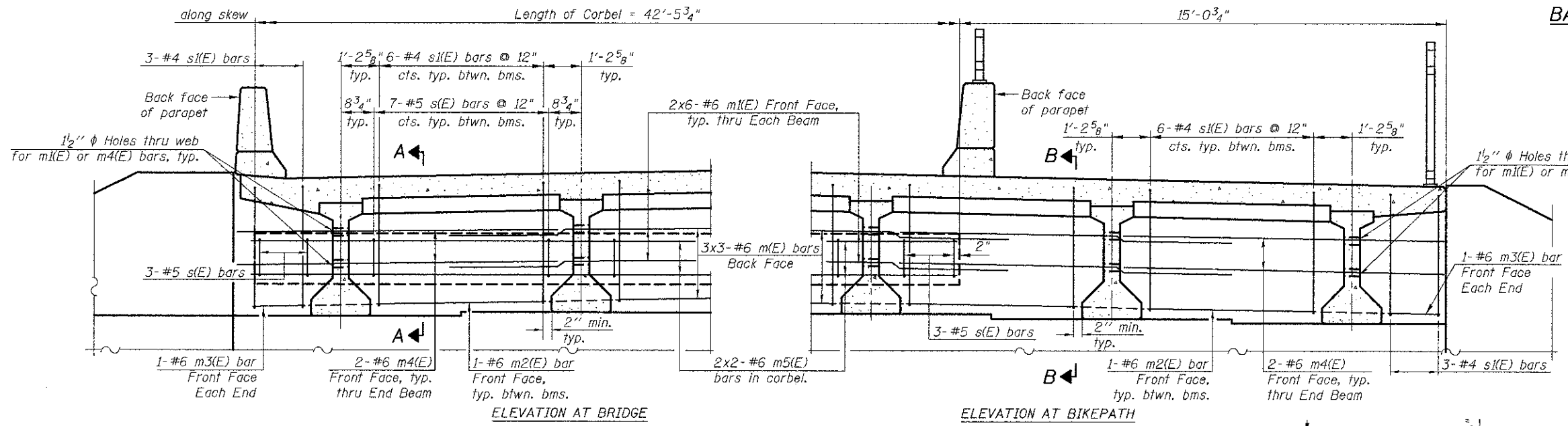
BAR d(E)

BAR v(E)

MINIMUM BAR LAP
(Parapet)
#4 bar = 2'-0"
#8 bar = 5'-2"
(Diaphragm)
#6 bar = 3'-4"

SUPERSTRUCTURE BILL OF MATERIAL

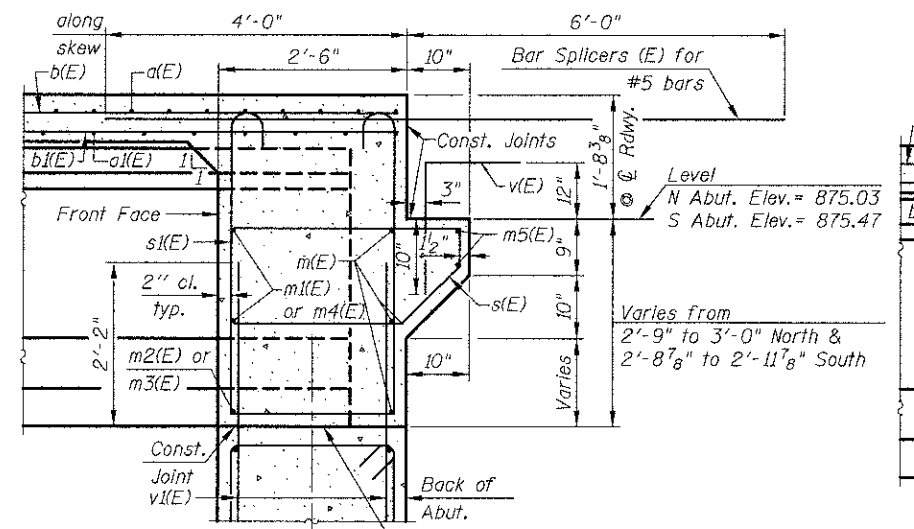
Bar	No.	Size	Length	Shape
a(E)	268	#5	30'-0"	—
a1(E)	270	#5	21'-1"	—
a2(E)	134	#6	6'-6"	—
a3(E)	12	#6	21'-10"	—
a4(E)	74	#5	2'-4"	—
b(E)	177	#5	24'-7"	—
b1(E)	192	#5	19'-3"	—
d(E)	148	#5	5'-7"	—
d1(E)	74	#5	7'-7"	—
d2(E)	74	#5	4'-8"	—
e(E)	6	#8	25'-11"	—
e1(E)	6	#4	23'-9"	—
e2(E)	22	#4	16'-7"	—
e3(E)	3	#4	16'-4"	—
e4(E)	3	#4	16'-9"	—
m(E)	18	#6	21'-7"	—
m1(E)	24	#6	10'-3"	—
m2(E)	14	#6	5'-3"	—
m3(E)	4	#6	1'-9"	—
m4(E)	8	#6	9'-11"	—
m5(E)	8	#6	22'-9"	—
s(E)	41	#5	6'-9"	—
s1(E)	48	#4	11'-0"	—
v(E)	86	#5	3'-9"	—
Item	Unit	Quantity		
Concrete Superstructure	Cu. Yd.	155.0		
Bridge Deck Grooving	Sq. Yd.	406		
Protective Coat	Sq. Yd.	485		
Reinforcement Bars, Epoxy Coated	Pound	29,680		



ELEVATION AT BRIDGE

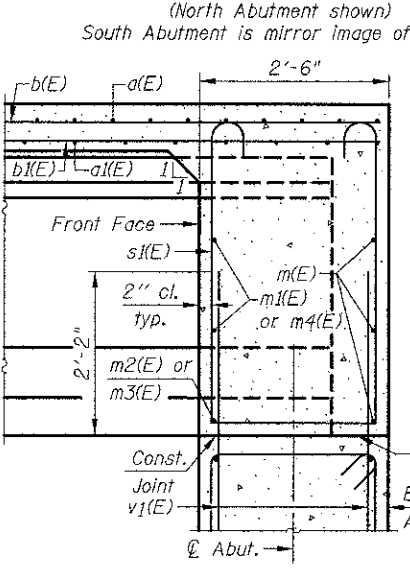
ELEVATION AT BIKEPATH

DIAPHRAGM ELEVATION AT ABUTMENT
(North Abutment shown)
South Abutment is mirror image of N. Abutment



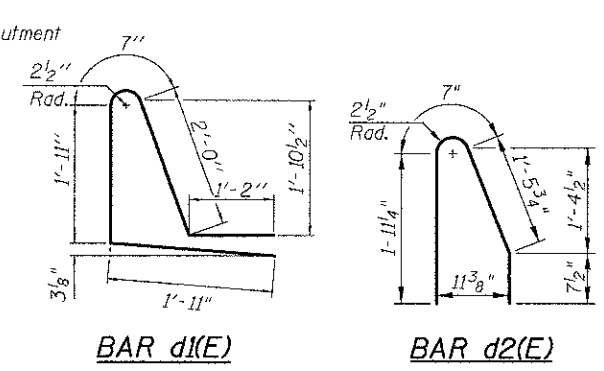
SECTION A-A

Dimensions at right angles to abutment, except as shown.



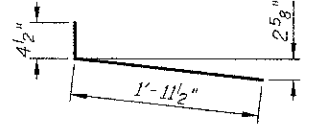
SECTION B-B

Dimensions at right angles to abutment, except as shown.

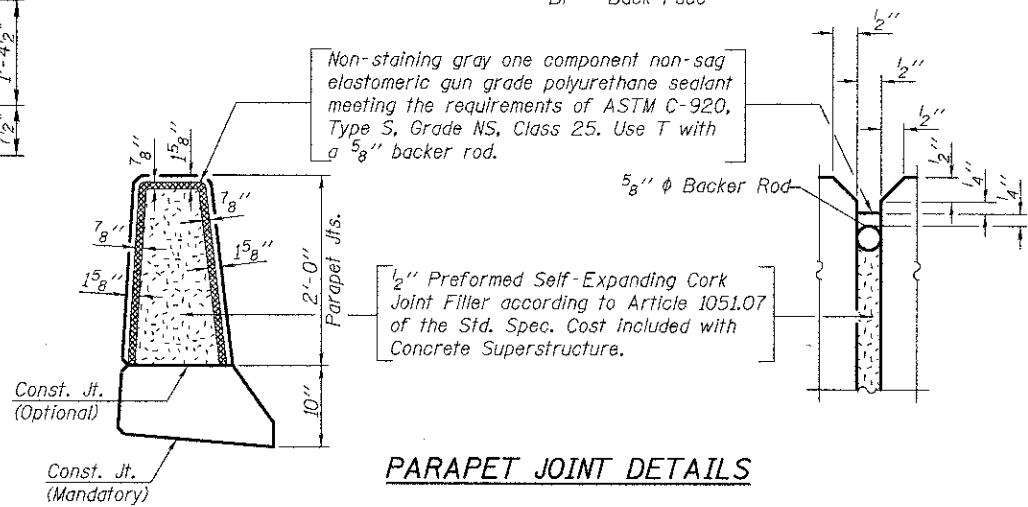


BAR d1(E)

BAR d2(E)



BAR a4(E)



PARAPET JOINT DETAILS

655556 PM
 10/18/2012
 J:\2473\road\sheet\17-Structures\Bridges\07-Superstructure-Details.dgn

CIVILTECH
 450 E Devon Ave, Suite 300
 Itasca, Illinois 60143
 Tel: 630.773.3900 Fax: 630.773.3975
 www.civiltechinc.com

DRAWN	- K. BOCHNOWSKI	REVISED	-
DESIGNED	- M. LANGE	REVISED	-
CHECKED	- G. HATLESTAD	REVISED	-
DATE	- 10/22/12	REVISED	-

STATE OF ILLINOIS
DEPARTMENT OF TRANSPORTATION

SUPERSTRUCTURE DETAILS
KREUTZER ROAD OVER S. BR. KISHWAUKEE RIVER
STRUCTURE NO. 056-6010

F.A.U. RTE.	SECTION	COUNTY	TOTAL SHEETS	SHEET NO.
4068	07-00031-00-PV	MCHENRY	167	95
CONTRACT NO.			63743	
ILLINOIS FED. AID PROJECT				

SHEET NO. 57 OF 518 SHEETS