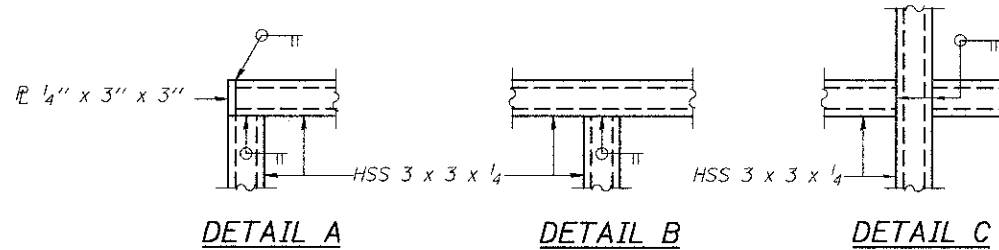


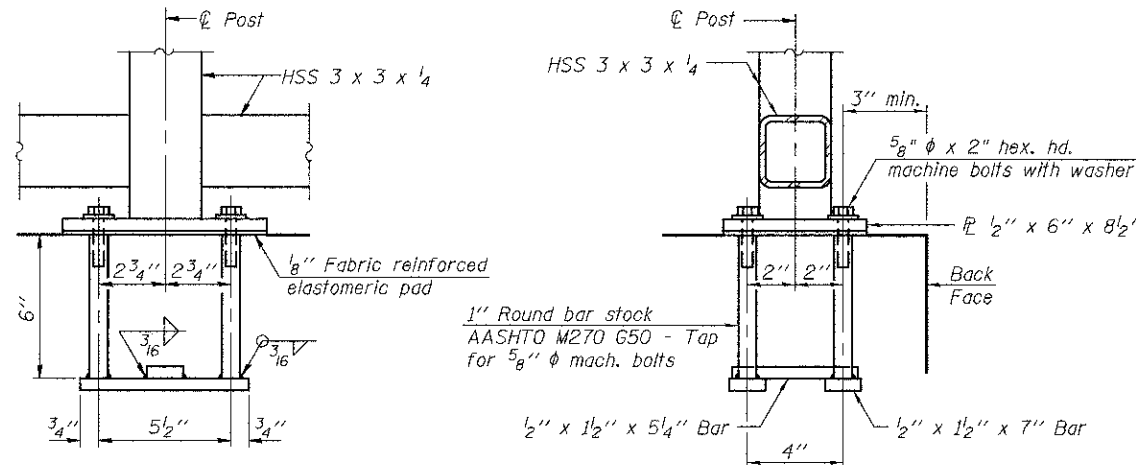
BICYCLE RAILING



DETAIL A

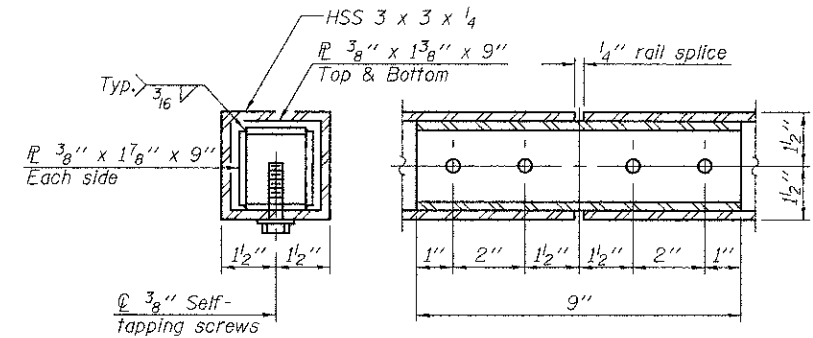
DETAIL B

DETAIL C

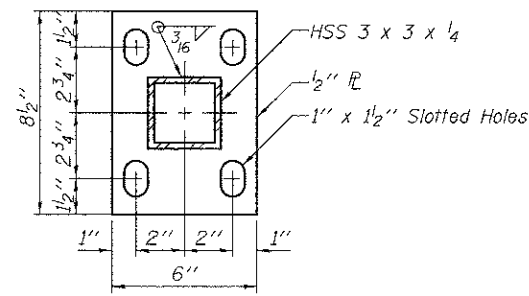


ANCHOR BOLT DETAILS

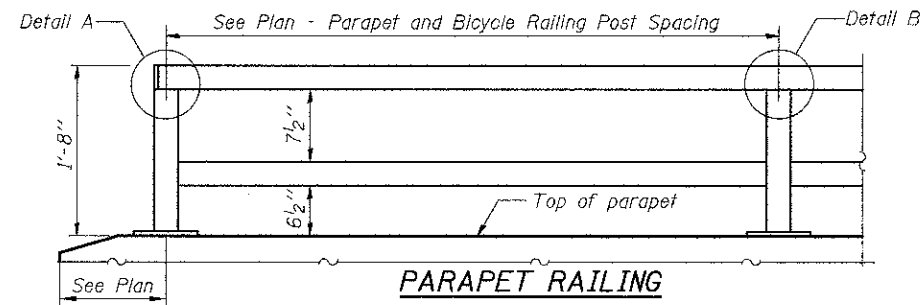
In lieu of the cast-in-place anchor device shown, the Contractor has the option of drilling and setting 5/8" ϕ anchor rods according to Article 509.06 of the Standard Specifications. Embedment shall be according to the manufacturer's specifications.



RAIL SPLICE

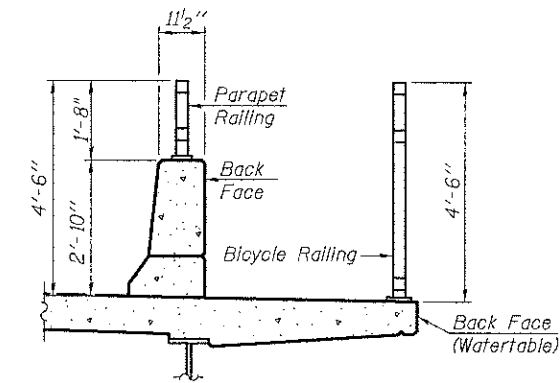


BASE PLATE

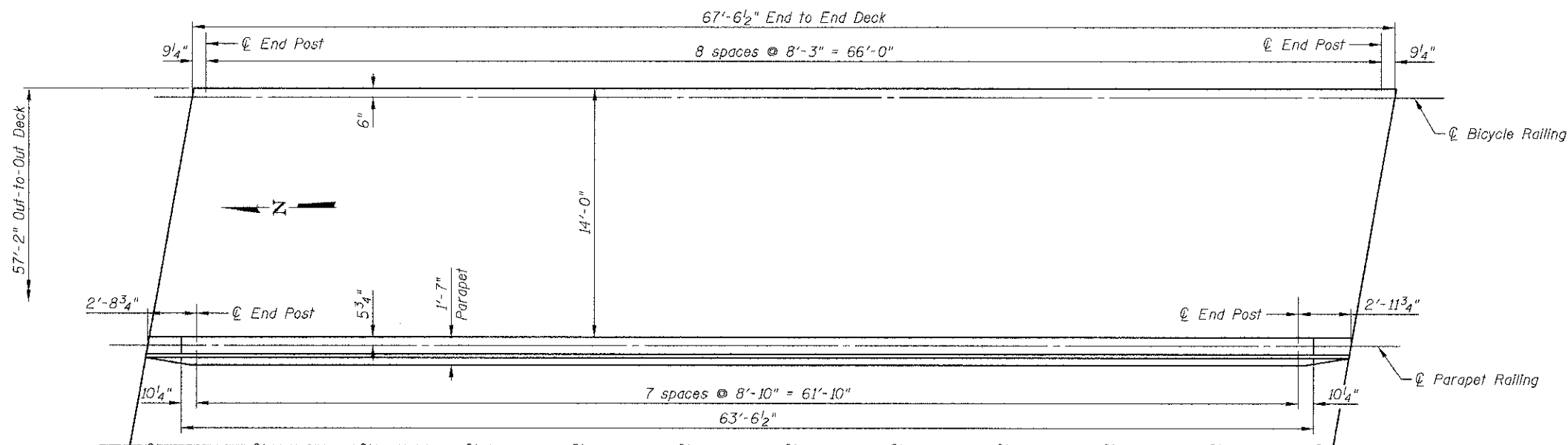


PARAPET RAILING ELEVATION

(Inside Face of Two Element Rail)



SECTION THRU DECK



PLAN - PARAPET AND BICYCLE RAILING POST SPACING

BILL OF MATERIAL

| Item | Unit | Quantity |
|-----------------|------|----------|
| Bicycle Railing | Foot | 66 |
| Parapet Railing | Foot | 62 |

65655T PM
 11/24/12 1:00 PM
 I:\2473\cad\sheet\17-Structures\Bridges\08_Bicycle_Railing.dgn

450 E Devon Ave, Suite 300
 Itasca, Illinois 60143
 Tel: 630.773.3900 Fax: 630.773.3975
 www.civiltechinc.com

| | | | |
|----------|-----------------|---------|---|
| DRAWN | - K. BOCHNOWSKI | REVISED | - |
| DESIGNED | - M. LANGE | REVISED | - |
| CHECKED | - G. HATLESTAD | REVISED | - |
| DATE | - 10/22/12 | REVISED | - |

STATE OF ILLINOIS
DEPARTMENT OF TRANSPORTATION

BICYCLE RAILING
KREUTZER ROAD OVER S. BR. KISHWAUKEE RIVER
STRUCTURE NO. 056-6010
 SHEET NO. 58 OF 518 SHEETS

| | | | | |
|---------------------------|----------------|---------|--------------------|-----------|
| F.A.U. RTE. | SECTION | COUNTY | TOTAL SHEETS | SHEET NO. |
| 4068 | 07-00031-00-PV | MCHENRY | 167 | 96 |
| | | | CONTRACT NO. 63743 | |
| ILLINOIS FED. AID PROJECT | | | | |