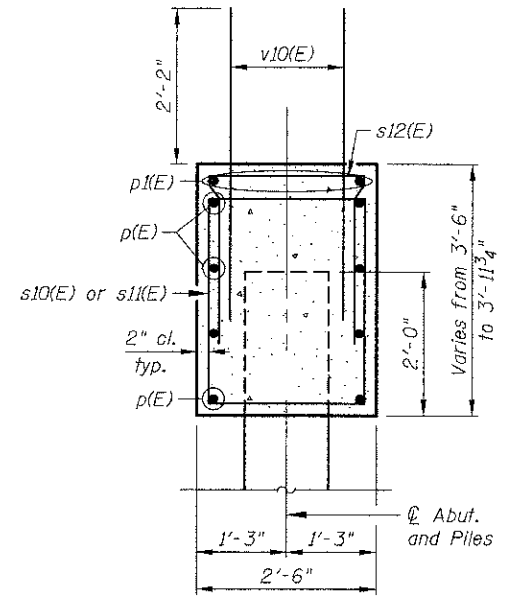
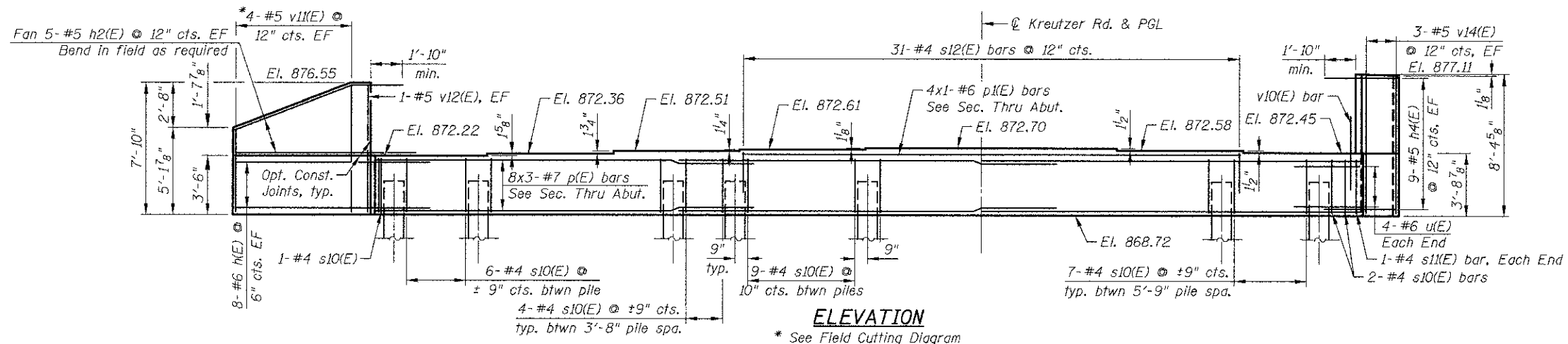


PILE DATA

(South Abutment)

Type: Metal Shell Piles 14" ϕ x 0.312"
 Nominal Required Bearing: 363 kips
 Factored Resistance Available: 200 kips
 Est. Length: 51 feet
 No. Production Piles: 10
 No. Test Piles: 1

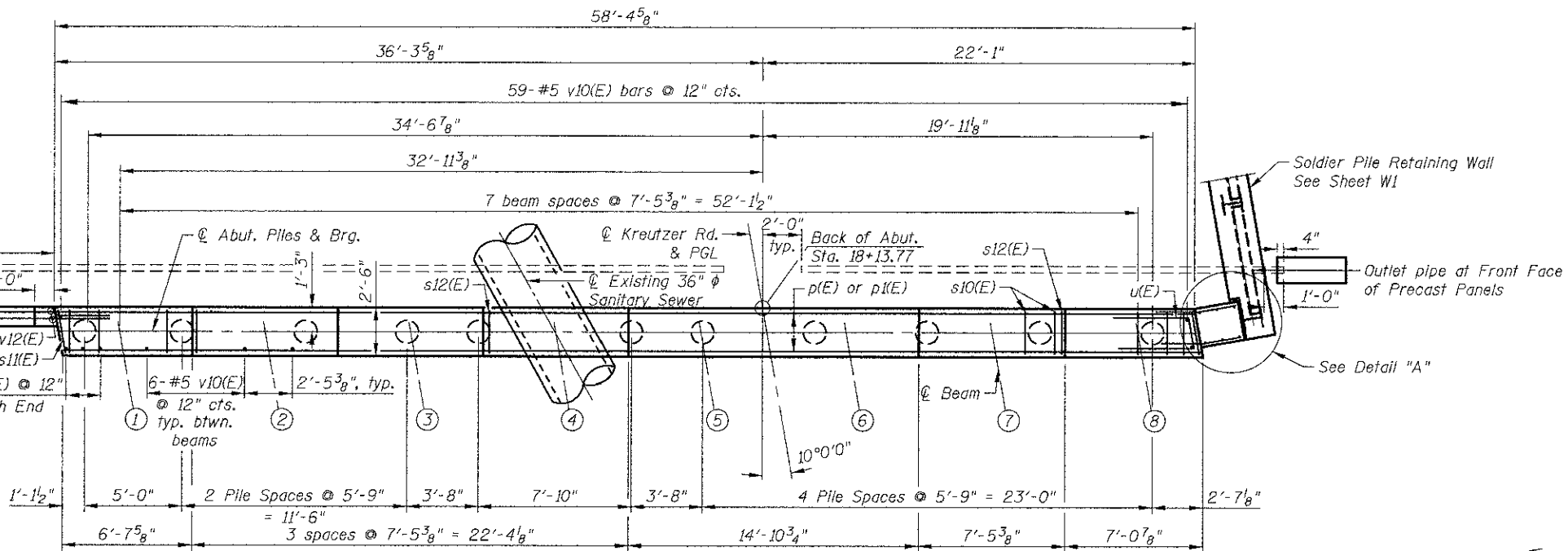


SECTION THRU ABUTMENT

MINIMUM BAR LAP

#7 bar = 5'-10"

For details of concrete headwall and rodent shield, See IDOT std. 601101. Cost included with Pipe Underdrain for Structures, 4"



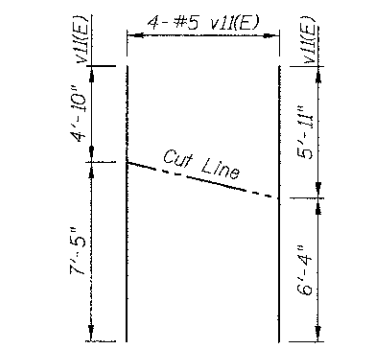
PLAN

BILL OF MATERIAL

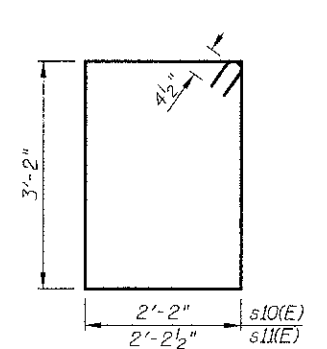
Bar	No.	Size	Length	Shape
h(E)	16	#6	10'-8"	—
h2(E)	10	#5	10'-8"	—
h4(E)	18	#5	4'-1"	—
p(E)	24	#7	23'-4"	—
p1(E)	2	#5	29'-5"	—
s10(E)	68	#4	11'-5"	□
s11(E)	2	#4	11'-6"	□
s12(E)	31	#4	6'-4"	□
u(E)	8	#6	9'-6"	∩
v10(E)	107	#5	4'-4"	—
v11(E)	8	#5	12'-3"	—
v12(E)	2	#5	7'-6"	—
v14(E)	6	#5	8'-0"	—
Item	Unit	Quantity		
Granular Backfill for Structures	Cu. Yd.	99		
Concrete Structures	Cu. Yd.	24.0		
Reinforcement Bars, Epoxy Coated	Pound	3,090		
Furnishing Metal Shell Piles 14" x 0.312"	Foot	510		
Driving Piles	Foot	510		
Test Pile Metal Shells	Each	1		
Geocomposite Wall Drain	Sq. Yd.	52		
Pipe Underdrain for Structures, 4"	Foot	69		

Notes:
 Bars indicated thus 1x3-#8 etc. indicates 1 line of bars with 3 lengths per line.
 For details of piles, see sheet S15.
 Pour steps monolithically with cap.
 EF = Each Face

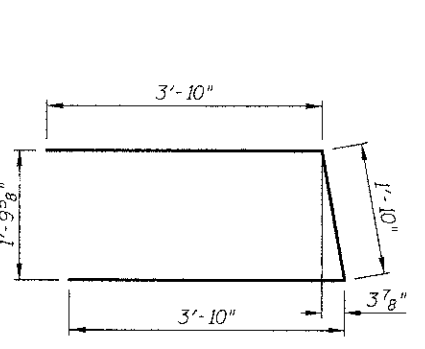
5/5/06 PM J:\2473\road\shel17-S\Structures\Br\Logo\N_South_Abutment.dgn



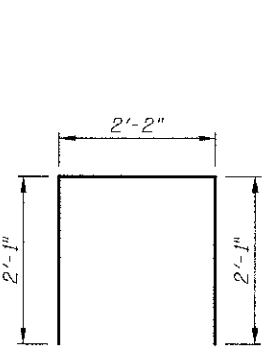
FIELD CUTTING DIAGRAM



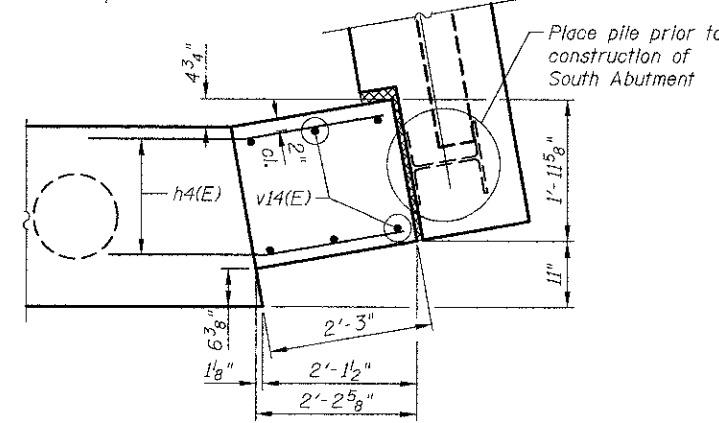
BARS s10(E) AND s11(E)



BAR u(E)



BAR s12(E)



DETAIL "A"

CIVILTECH
 450 E Devon Ave, Suite 300
 Itasca, Illinois 60143
 Tel: 630.773.3900 Fax: 630.773.3975
 www.civiltechinc.com

DRAWN	- K. BOCHNOWSKI	REVISED	-
DESIGNED	- M. LANGE	REVISED	-
CHECKED	- G. HATLESTAD	REVISED	-
DATE	- 10/22/12	REVISED	-

STATE OF ILLINOIS
DEPARTMENT OF TRANSPORTATION

SOUTH ABUTMENT
KREUTZER ROAD OVER S. BR. KISHWAUKEE RIVER
STRUCTURE NO. 056-6010
 SHEET NO. S14 OF S18 SHEETS

F.A.U. RTE.	SECTION	COUNTY	TOTAL SHEETS	SHEET NO.
4068	07-00031-00-PV	MCHENRY	167	102
			CONTRACT NO.	63743
ILLINOIS FED. AID PROJECT				