

FOR INDEX OF SHEETS, SEE SHEET NO. 2

FOR INDEX OF HIGHWAY STANDARDS, SEE SHEET NO. 2

STATE OF ILLINOIS DEPARTMENT OF TRANSPORTATION DIVISION OF HIGHWAYS PLANS FOR PROPOSED FEDERAL AID PROJECT

FAU 4006 (MAPLE AVENUE)
FAU 4005 (WASHINGTON STREET) TO
FAU 4006 (L.W. BESINGER DRIVE)
SECTION 95-00049-00-PV
PROJECT: TE-M-8003 (095)
ROADWAY RECONSTRUCTION
VILLAGE OF CARPENTERSVILLE
KANE COUNTY
JOB NO.: C-91-399-01

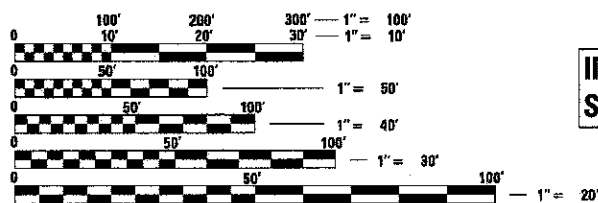
F.A.U. RTE.	SECTION	COUNTY	TOTAL SHEETS	SHEET NO.
4006	95-00049-00-PV	KANE	138	1
STA. 111+65	TO STA. 180+41		43	141
FED. ROAD DIST. NO.	ILLINOIS	FED AID PROJECT		
1	C-91-399-01	TE-M-8003 (095)		

CONTRACT NO. 63745 Revised 4/18/13

TRAFFIC DATA

MAPLE AVENUE - URBAN COLLECTOR
2040 ADT = 9,000
POSTED SPEED LIMIT = 25 MPH
(BETWEEN WASHINGTON STREET AND LORD AVENUE)
POSTED SPEED LIMIT = 20 MPH
(BETWEEN LORD AVENUE AND CARPENTER BOULEVARD)
POSTED SPEED LIMIT = 30 MPH
(BETWEEN CARPENTER BOULEVARD AND L.W. BESINGER DRIVE)
DESIGN SPEED = 30 MPH

BAXTER & WOODMAN, INC
STATE OF ILLINOIS - PROFESSIONAL DESIGN FIRM
LICENSE NO. - 184-001121 - EXPIRES 4/30/2013



FULL SIZE PLANS HAVE BEEN PREPARED USING STANDARD ENGINEERING SCALES. REDUCED SIZED PLANS WILL NOT CONFORM TO STANDARD SCALES. IN MAKING MEASUREMENTS ON REDUCED PLANS, THE ABOVE SCALES MAY BE USED.

J.U.L.I.E. DESIGN STAGE REQUEST
DIG. No. A0751042

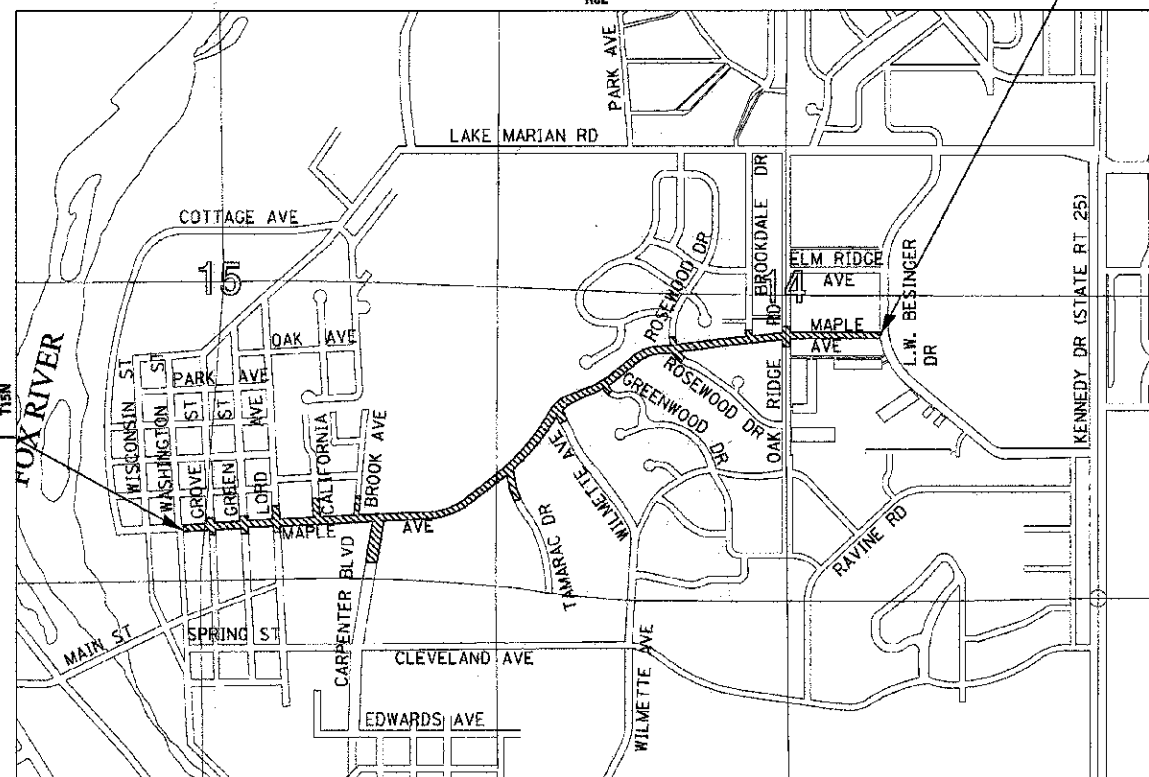
Call Before You Dig

JULIE
ILLINOIS ONE-CALL SYSTEM

CONTACT JULIE AT 811 OR 800-892-0123 WITH THE FOLLOWING:
COUNTY = KANE
CITY-TOWNSHIP = E DUNDEE
SEC. & 1/4 SEC. NO. - 14 & 15 T42N, R8E
48 HOURS (2 working days) BEFORE YOU DIG

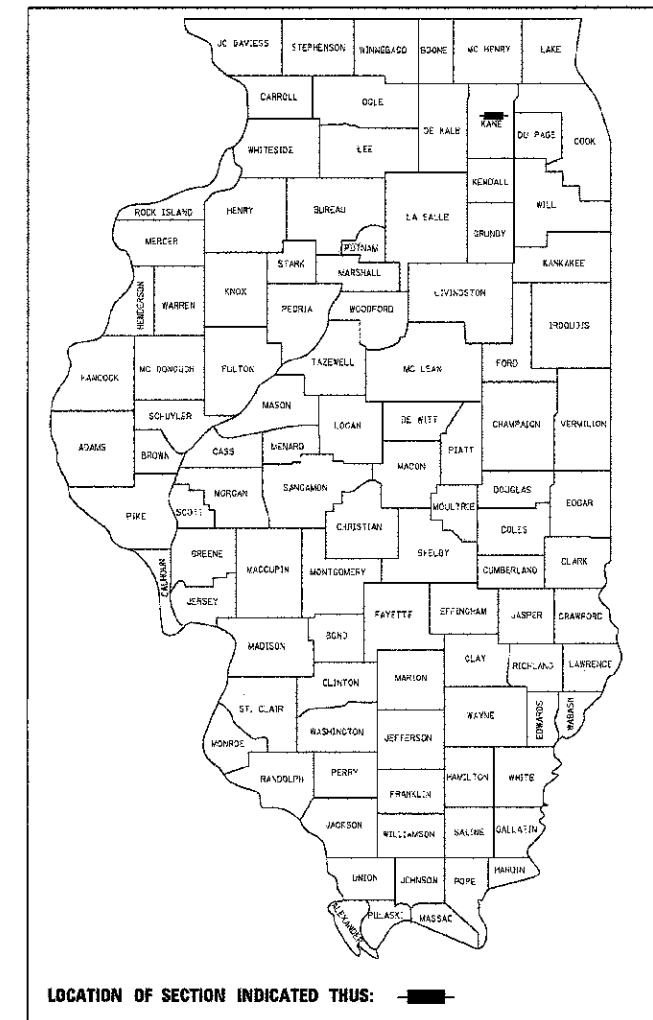
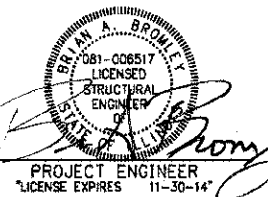
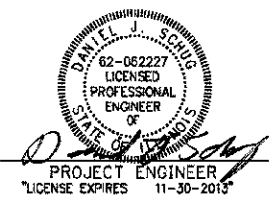
CONTRACT NO. 63745

LOCATION MAP
(NOT TO SCALE)
R8E



SECTION 14 & 15, T42N, R8E, OF THE THIRD PRINCIPAL MERIDIAN

DUNDEE TOWNSHIP
GROSS LENGTH OF IMPROVEMENT = 6,876 LF OR 1.30 MILES
NET LENGTH OF IMPROVEMENT = 6,876 LF OR 1.30 MILES



STATE OF ILLINOIS
DEPARTMENT OF TRANSPORTATION
DIVISION OF HIGHWAYS

APPROVED DECEMBER 11, 2012
Ed Seydowski
VILLAGE OF CARPENTERSVILLE

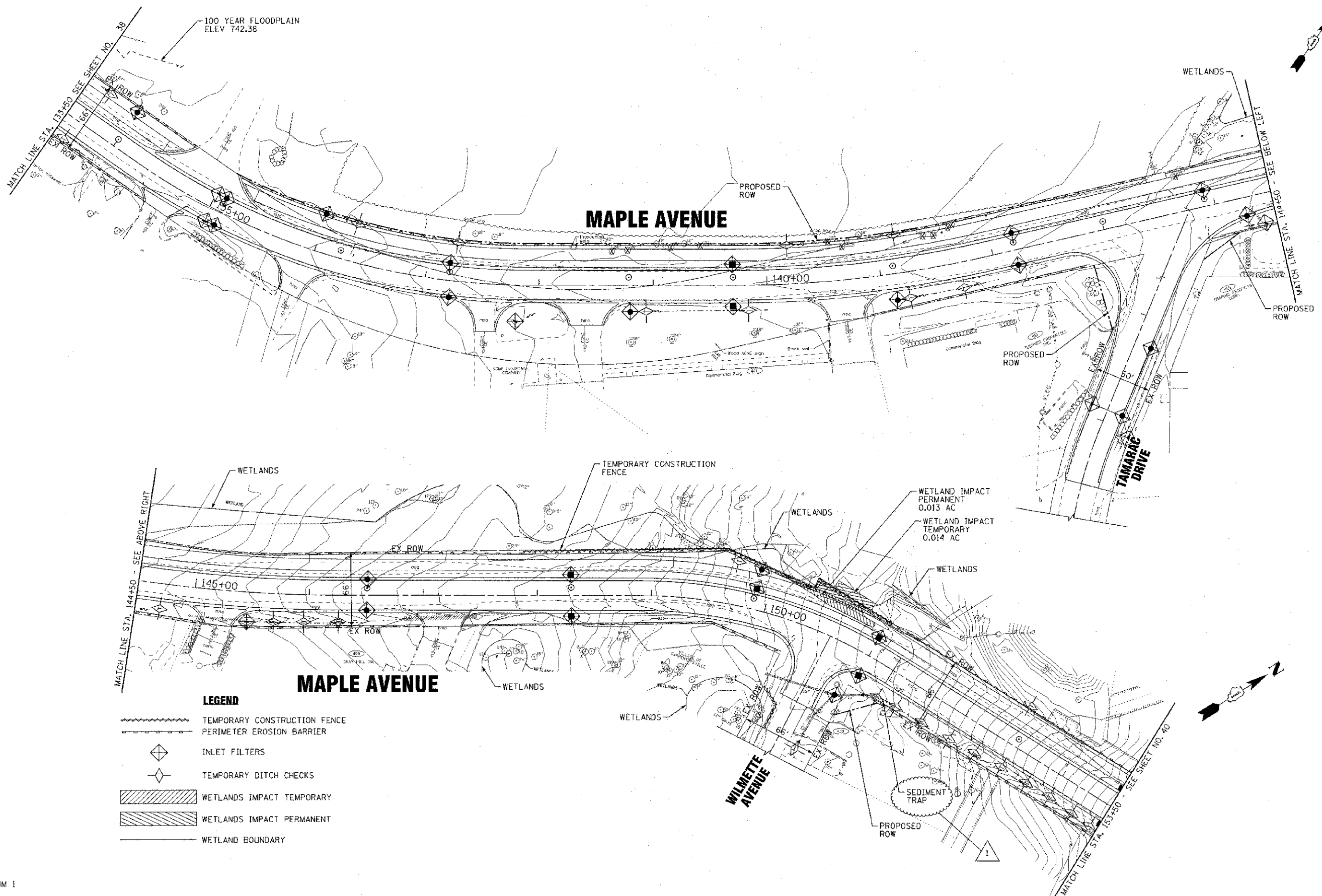
PASSED DECEMBER 31, 2012
C. Holt
LOCAL ROADS ENGINEER

RELEASING FOR BID
BASED ON LIMITED
REVIEW JANUARY 2, 2013
Deputy Director of
HIGHWAYS, REGION 1 ENGINEER

PRINTED BY THE AUTHORITY
OF THE STATE OF ILLINOIS

B&W PROJECT NO.: 110994.40

PROGRAM AND OFFICE ENGINEER: CHARLES F. RIDDLE, PE (847) 705-4406



LEGEND

- TEMPORARY CONSTRUCTION FENCE
- PERIMETER EROSION BARRIER
- INLET FILTERS
- TEMPORARY DITCH CHECKS
- WETLANDS IMPACT TEMPORARY
- WETLANDS IMPACT PERMANENT
- WETLAND BOUNDARY

COPYRIGHT © 2012 BY BAXTER & WOODMAN INC.
 ALL RIGHTS RESERVED. DESIGN, DRAWING, AND CONSTRUCTION OF THIS PROJECT IS THE SOLE PROPERTY OF BAXTER & WOODMAN INC.
 NO PART OF THIS DOCUMENT IS TO BE REPRODUCED OR TRANSMITTED IN ANY FORM OR BY ANY MEANS, ELECTRONIC OR MECHANICAL, WITHOUT PERMISSION IN WRITING FROM BAXTER & WOODMAN INC.

1 ADDENDUM 1



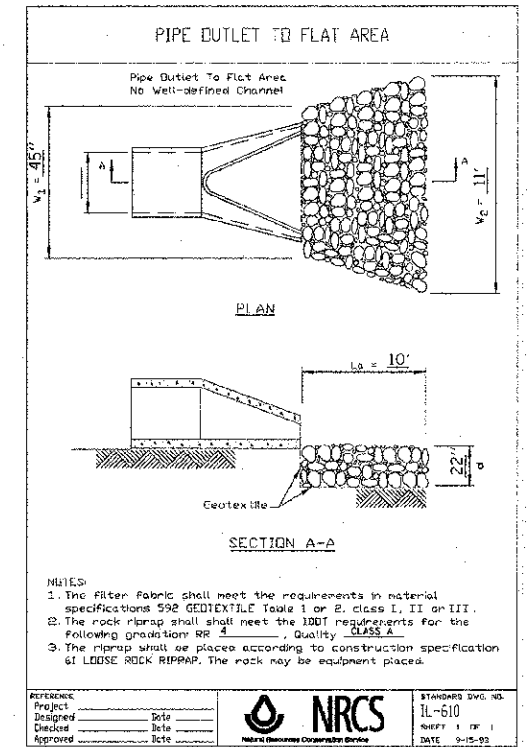
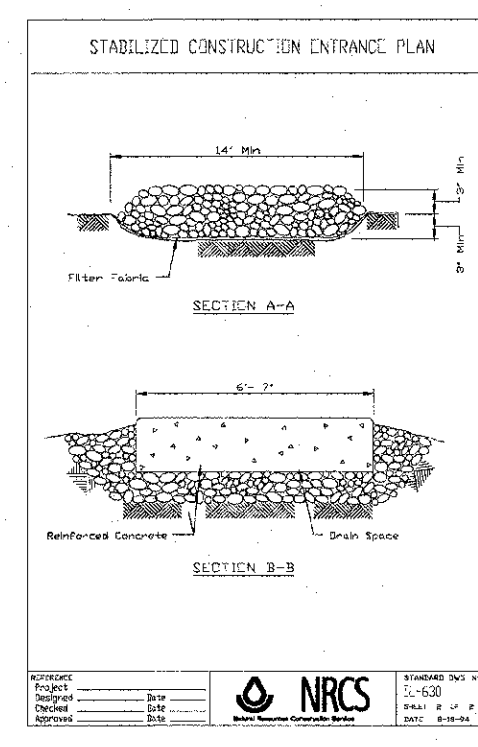
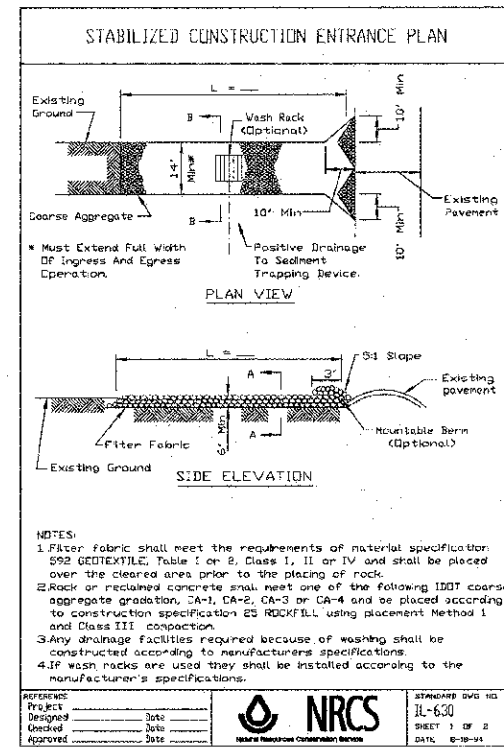
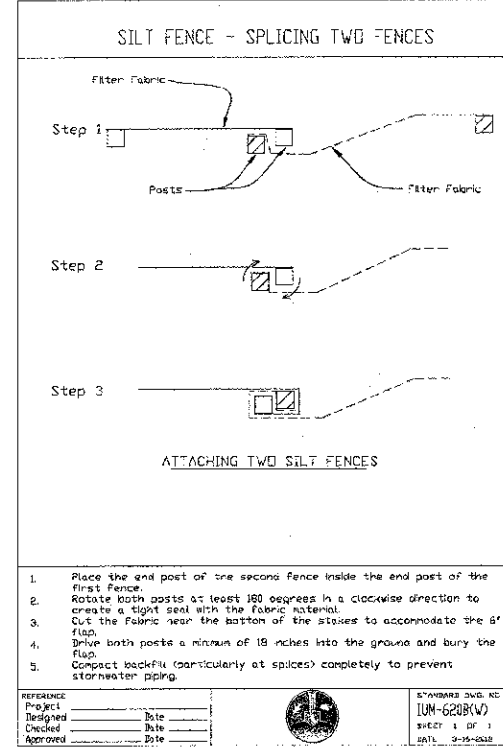
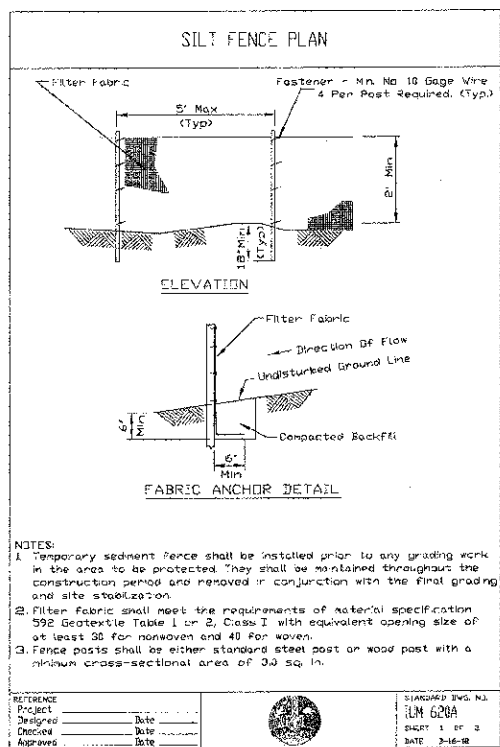
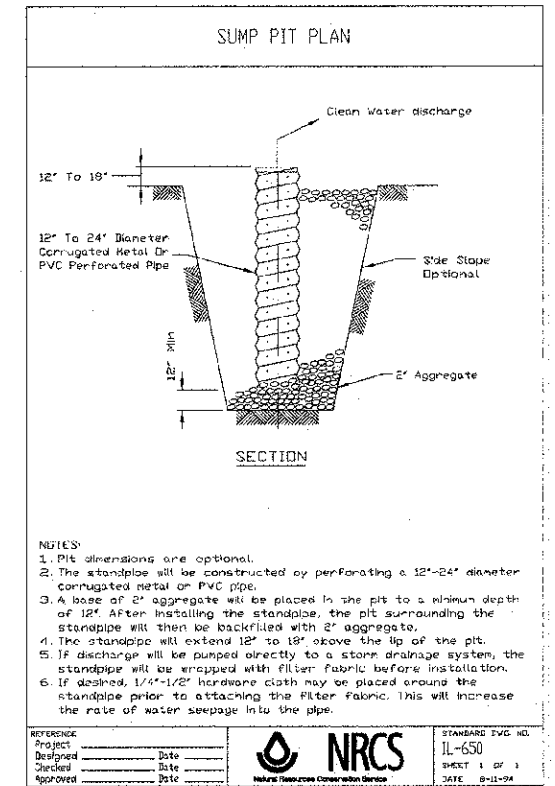
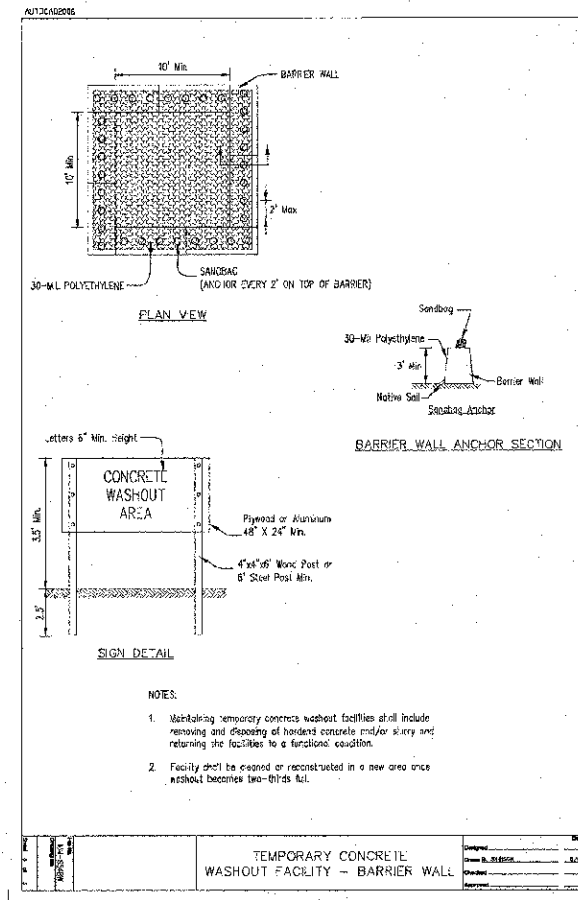
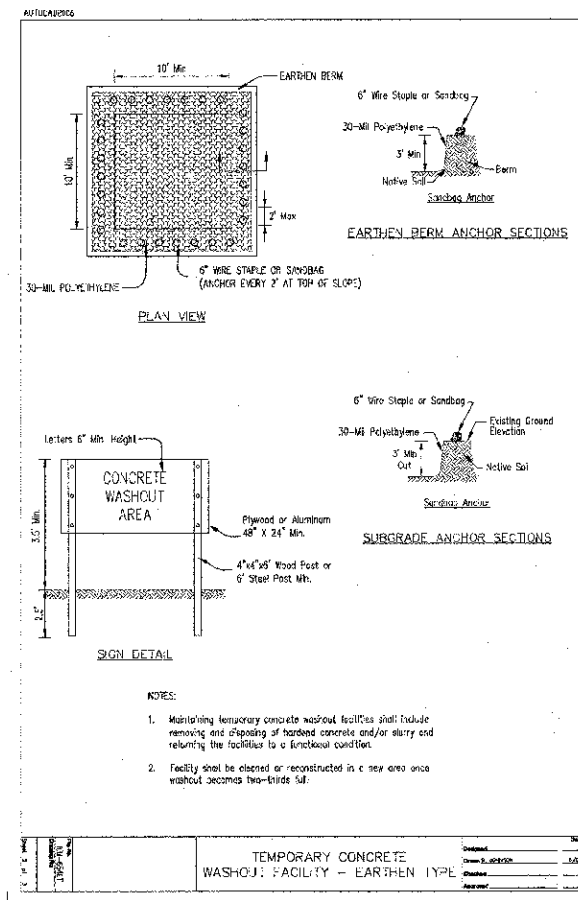
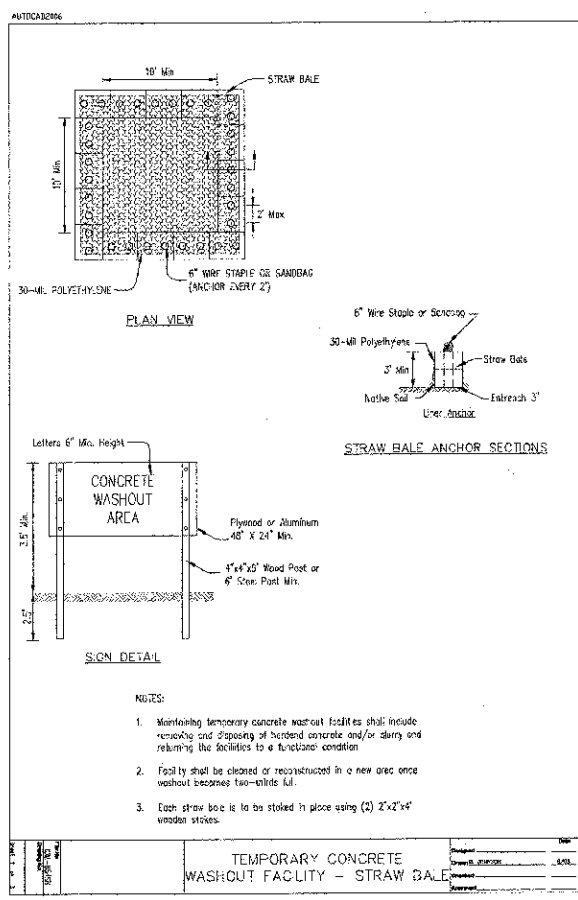
DESIGNED - DJS	REVISED - PER IDOT 10/19/12
DRAWN - UKB	REVISED - PER KDSWCD 04/09/13
CHECKED - RWL	REVISED -
DATE - 06/20/12	FILE - 110994-ER052.sht

**STATE OF ILLINOIS
DEPARTMENT OF TRANSPORTATION**

EROSION CONTROL PLAN

SCALE: 1"=40' STA. 133+50 TO STA. 153+50

F.A.J. R.T.E. 4006	SECTION 95-00349-00-PV	COUNTY KANE	TOTAL SHEETS 138	SHEET NO. 39
CONTRACT NO. 63745				
FED. ROAD DIST. NO. 1 ILLINOIS' FED. AID PROJECT M-8003 (095)				



ADDENDUM 1

DESIGNED - DCS	REVISED - PER IDOT 10/19/12
DRAWN - URK	REVISED - PER KDSWCD 04/09/13
CHECKED - RWL	REVISED
DATE - 06/20/12	FILE - 110994-ER054-Datgls.sht

STATE OF ILLINOIS
DEPARTMENT OF TRANSPORTATION

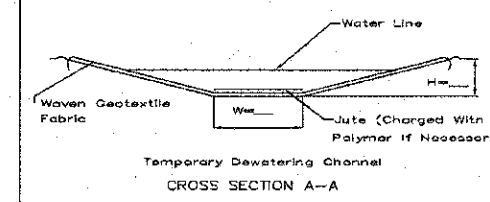
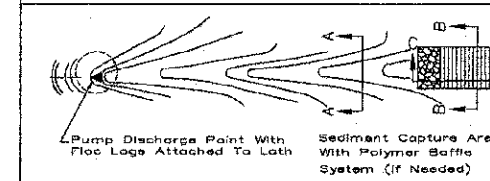
EROSION CONTROL DETAILS

SCALE: NONE STA. TO STA.

F.A.U. PTE.	SECTION	COUNTY	TOTAL SHEETS
4006	95-00049-00-PV	KANE	138 of 404
CONTRACT NO. 63745			SHEET 1 OF 1
FED. ROAD DIST. NO. 1 ILLINOIS FEB. AND PROJECT M-8003 (095)			

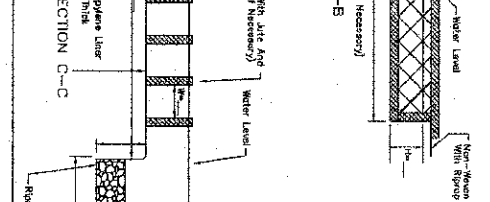
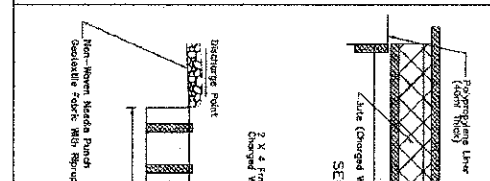
COPYRIGHT © 2012 BY BAXTER & BOZEMAN, INC.
 515 E. ILLINOIS PROFESSIONAL DESIGN FIRM
 11/27/2012

TEMPORARY MIXING SWALE WITH OPTIONAL BAFFLE PIT



REFERENCE	STANDARD DWG. NO.
Project	IUM-594A
Designed	SHEET 1 OF 1
Checked	DATE: 6-21-11
Approved	

TEMPORARY MIXING SWALE WITH OPTIONAL BAFFLE PIT



REFERENCE	STANDARD DWG. NO.
Project	IUM-594B
Designed	SHEET 2 OF 2
Checked	DATE: 6-21-11
Approved	



COPYRIGHT © 2004 BY BAXTER & WOODMAN, INC.
 STATE OF ILLINOIS - PROFESSIONAL ENGINEER DESIGN FIRM
 4700/2003
 563632
 \\userp01.sawwood.com\proj\10934\10934-02\er054-2\er054-2.dwg

1 ADDENDUM 1



DESIGNED -	DJS	REVISED -	PER IDOT 10/19/12
DRAWN -	UKB	REVISED -	PER KDSWCD 04/09/13
CHECKED -	RWL	REVISED -	
DATE -	06/20/12	FILE -	110934-ER054-Detail.sh

STATE OF ILLINOIS
DEPARTMENT OF TRANSPORTATION

EROSION CONTROL DETAILS

SCALE: NONE

STA. TO STA.

F.A.J. RTE.	SECTION	COUNTY	TOTAL SHEETS	SHEET NO.
4006	95-00049-00-PV	KANE	138	408
CONTRACT NO. 63745				
FED. ROAD DIST. NO. 3 (ILLINOIS) FED. AID PROJECT #4-8003 (056)				