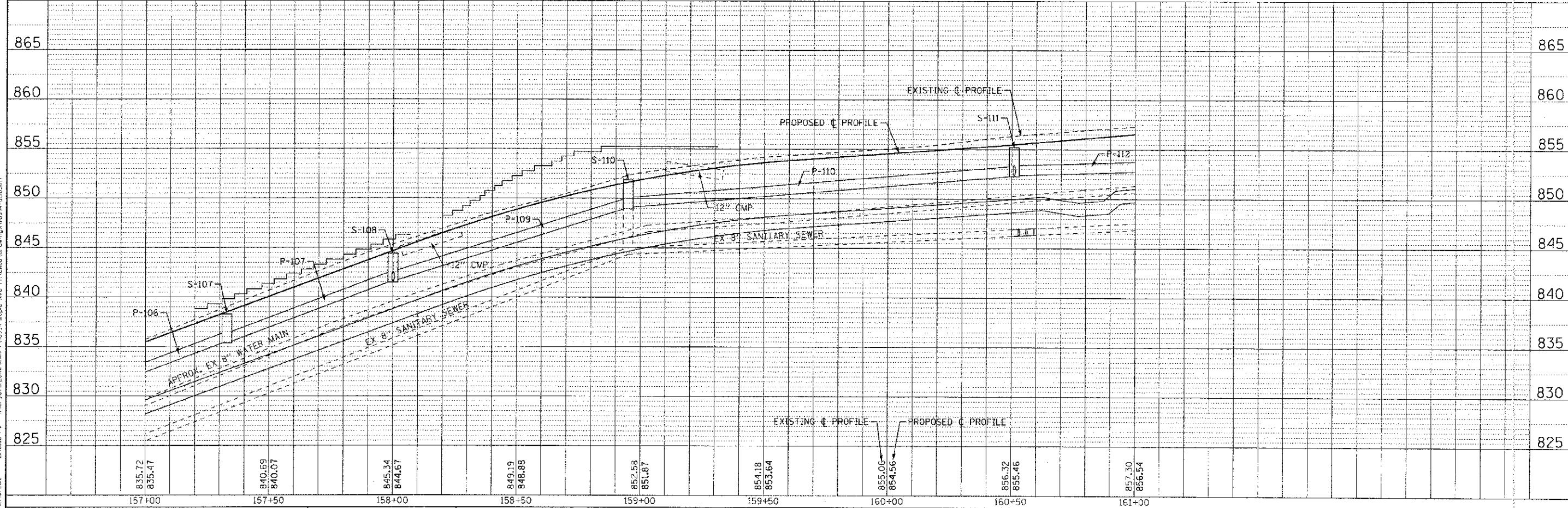


STRUCTURE/STRUCTURES									
LABEL	STATION	OFFSET (FT)	TYPE	FRAME	ELEVATION	RIM/EP	Elevation (invert) (ft)		
S-107	157+33	7'	LT MANHOLE TYPE A, 4'DIA.	T-1 F. C.L.	836.28	RIM	836.45 12°N; 835.34 12°SW		
S-108	158+00	13'	LT INLETS, SPECIAL NO. 2		844.41	EP	841.48 12°SW; 841.68 12°NE; 841.57 12°SE		
S-109	158+01	13'	RT CATCH BASIN TYPE C	T-24 F&G	844.93	EP	841.70 12°NW		
S-110	158+95	18'	LT MANHOLE TYPE A, 4'DIA.	T-1 F. C.L.	851.85	RIM	849.02 12°NE; 848.92 12°SW		
S-111	160+51	13'	LT INLETS, SPECIAL NO. 2		855.20	EP	852.37 12°E; 852.27 12°SW; 852.36 12°S		
S-112	160+52	13'	RT CATCH BASIN TYPE C	T-24 F&G	855.72	EP	852.50 12°N		

PIPES						
NO.	TYPE	TY	DIA. (IN)	LENGTH (FT)	SLOPE	TBF (CY)
P-107	STORM SEWERS, CLASS A, RUBBER GASKET	1	12	68	8.87%	15
P-108	STORM SEWERS, CLASS A, RUBBER GASKET	1	12	27	0.48%	7
P-109	STORM SEWERS, CLASS A, RUBBER GASKET	1	12	97	7.57%	21
P-110	STORM SEWERS, CLASS A, RUBBER GASKET	1	12	161	2.02%	35
P-111	STORM SEWERS, CLASS A, RUBBER GASKET	1	12	26	0.54%	7
P-112	STORM SEWERS, CLASS A, RUBBER GASKET	1	12	131	0.75%	42

MAPLE AVENUE



	DESIGNED - AMM	REVISED - PER IDOT 10/19/12	STATE OF ILLINOIS DEPARTMENT OF TRANSPORTATION	DRAINAGE AND UTILITY MAPLE AVENUE	F.A. RTE. 4006	SECTION 95-00049-C0-PV	COUNTY KANE	TOTAL SHEETS 138
	DRAWN - LKB	REVISIONS -			CONTRACT NO. 63745			
	CHECKED - RWL	REVISIONS -			FED. ROAD DIST. NO. 1	ILLINOIS FED. AID PROJECT M-8003 (095)		
	DATE - 06/20/12	FILE 1:0994-DU10.sht			SCALE: H: 1"=20' V: 1"=5'	STA. 157+00 TO STA. 161+00		

COPYRIGHT © 2012 BY BAXTER WOODMAN, INC. ALL RIGHTS RESERVED. NO PART OF THIS DOCUMENT IS TO BE REPRODUCED OR TRANSMITTED IN ANY FORM OR BY ANY MEANS, ELECTRONIC OR MECHANICAL, INCLUDING PHOTOCOPYING, RECORDING, OR BY ANY INFORMATION STORAGE AND RETRIEVAL SYSTEM. PROJECT: ILLINOIS DEPARTMENT OF TRANSPORTATION, DISTRICT 1, PROJECT M-8003 (095), MAPLE AVENUE, KANE COUNTY, ILLINOIS. DRAWING NO. 1:0994-DU10.sht. DATE: 06/20/12.