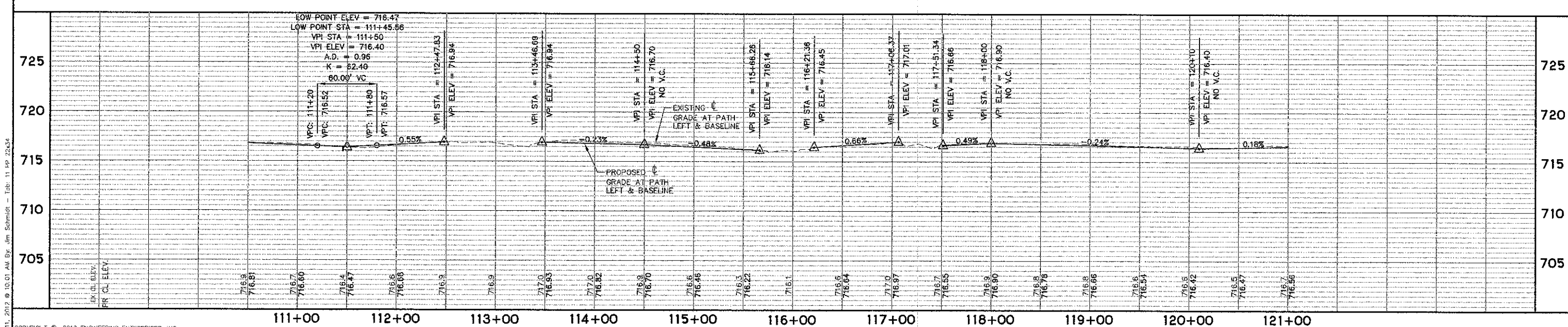


- NOTES:**
1. ANY EXISTING PAVEMENT MARKING WHICH CONFLICTS WITH PROPOSED PAVEMENT MARKINGS SHALL BE REMOVED ACCORDING TO SECTION 783 OF THE STANDARD SPECIFICATIONS. WATER BLASTING SHALL BE USED TO REMOVE EXISTING PAVEMENT MARKINGS. THE USE OF GRINDERS WILL NOT BE ALLOWED ON EXISTING SURFACE COURSE.
  2. SEE SCHEDULES FOR COMBINATION CURB & GUTTER REMOVAL AND PROPOSED CURB & GUTTER LOCATIONS.
  3. SEE SCHEDULES FOR DETECTABLE WARNING LOCATIONS.

SCALE:  
 HORIZONTAL 1" = 50'  
 VERTICAL 1" = 5'



Engineering Enterprises, Inc. CONSULTING ENGINEERS 52 Wheeler Road Sugar Grove, Illinois 60554 630.466.8700 / www.eelweb.com		USER NAME # PLOT SCALE # PLOT DATE #	DESIGNED - SWM DRAWN - CLN CHECKED - JRL DATE - 07/20/12	REVISED - REVISED - REVISED - REVISED -	<b>STATE OF ILLINOIS          DEPARTMENT OF TRANSPORTATION</b>		<b>PLAN AND PROFILE          CONTINENTAL DRIVE</b>		F.A.U. RTE. N/A	SECTION 11-00032-00-BT	COUNTY DUPAGE	TOTAL SHEETS 26	SHEET NO. 11	CONTRACT NO. 63760
Copyright © 2012 Engineering Enterprises, Inc.		DATE: 07/20/12			SCALE: 1"=50'		SHEET NO. 2 OF 2 SHEETS		STA. 110+50 TO STA. 121+00		FED. ROAD DIST. NO. 1 ILLINOIS FED. AID PROJECT N-9003(84)			

Plotted: October 11, 2012 @ 10:01 AM By: Jim Schmidt - Tab: 11.rpt 22x34

File: H:\PROJECTS\11003\11003-00-BT-PLAN-ENG-WP1006-PP