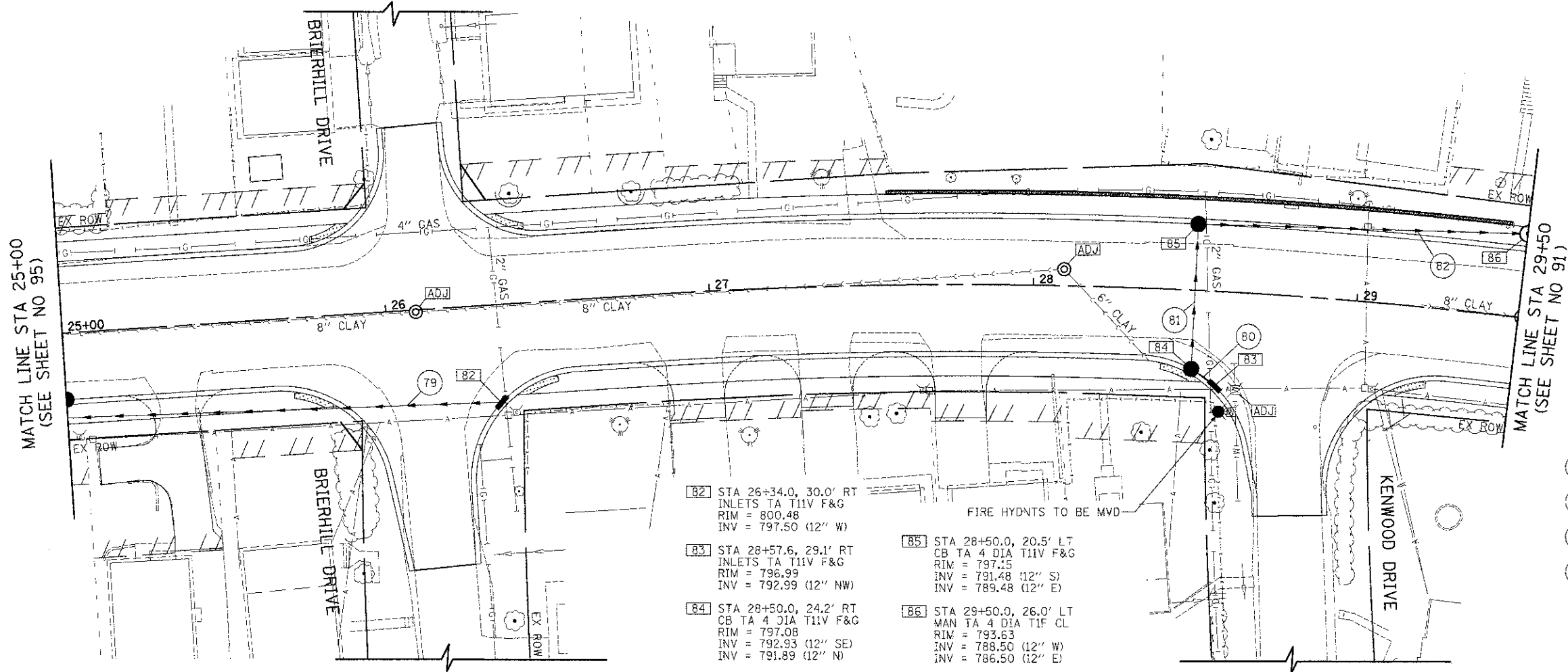


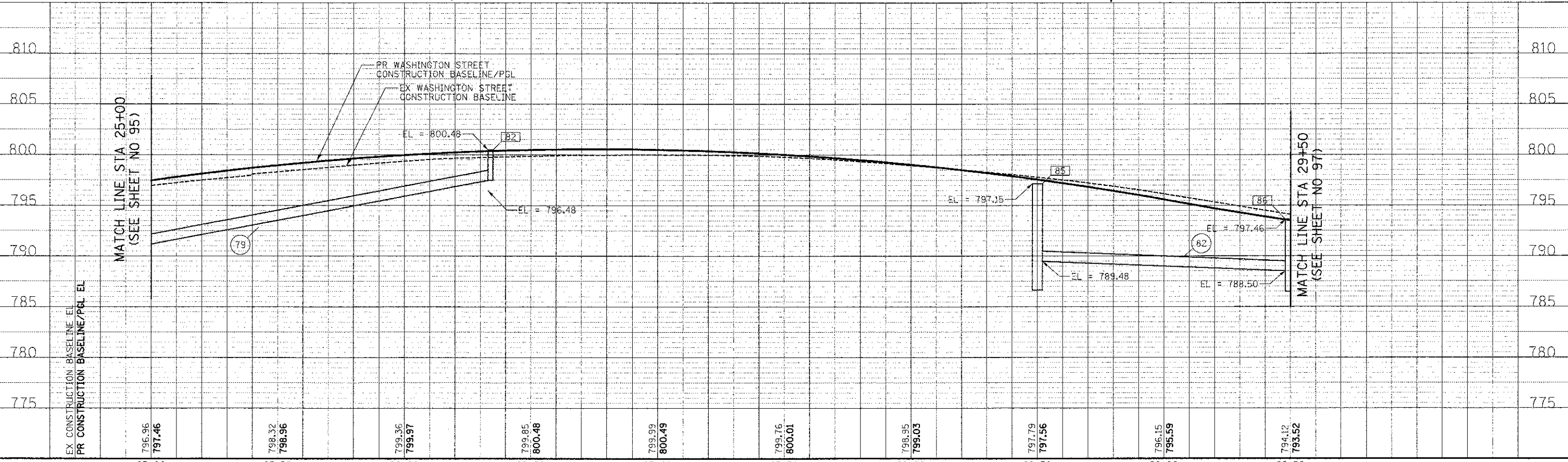
DATE	
BY	
FINAL SURVEY	
SURVEY PLOTTED	
NOTE BOOK	
AREAS CHECKED	

DATE	
BY	
ORIGINAL SURVEY	
SURVEY PLOTTED	
NOTE BOOK	
AREAS CHECKED	



- 82 STA 26+34.0, 30.0' RT
INLETS TA T11V F&G
RIM = 800.48
INV = 797.50 (12" W)
- 83 STA 28+57.6, 29.1' RT
INLETS TA T11V F&G
RIM = 796.99
INV = 792.99 (12" NW)
- 84 STA 28+50.0, 24.2' RT
CB TA 4 DIA T11V F&G
RIM = 797.08
INV = 792.93 (12" SE)
INV = 791.89 (12" N)
- 85 STA 28+50.0, 20.5' LT
CB TA 4 DIA T11V F&G
RIM = 797.15
INV = 791.48 (12" S)
INV = 789.48 (12" E)
- 86 STA 29+50.0, 26.0' LT
MAN TA 4 DIA T1F CL
RIM = 793.63
INV = 788.50 (12" W)
INV = 786.50 (12" E)

- 79 137' STORM SEW CL A 1, 12" @ 4.76%
TRENCH BACKFILL = 30 CU YD
- 80 6' STORM SEW CL A 1, 12" @ 1.00%
TRENCH BACKFILL = 1 CU YD
- 81 41' STORM SEW CL A 1, 12" @ 1.00%
TRENCH BACKFILL = 13 CU YD
- 82 98' STORM SEW CL A 1, 12" @ 1.00%
TRENCH BACKFILL = 50 CU YD



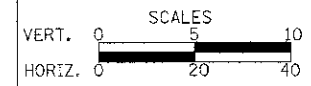
EX CONSTRUCTION BASELINE/EL	796.96	798.32	799.36	799.85	799.99	799.76	798.95	797.79	796.15	794.12	
PR CONSTRUCTION BASELINE/PGL EL	797.46	798.96	799.97	800.48	800.49	800.01	799.03	797.56	795.59	793.52	
	25+00	25+50	26+00	26+50	27+00	27+50	28+00	28+50	29+00	29+50	

CIVILTECH
450 E Devon Ave, Suite 300
Itasca, Illinois 60143
Tel: 630.773.3900 Fax: 630.773.3975
www.civiltechinc.com

DESIGNED - PK
DRAWN - JRR
CHECKED - RTM
DATE - 12/17/2012

REVISED -
REVISED -
REVISED -
REVISED -

STATE OF ILLINOIS
DEPARTMENT OF TRANSPORTATION



DRAINAGE AND UTILITIES

SHEET NO. 6 OF 15 SHEETS STA. 25+00 TO STA. 29+50

F.A.U. RTE.	SECTION	COUNTY	TOTAL SHEETS	SHEET NO.
0187	05-00121-07-WR	LAKE	223	96
CONTRACT NO. 63765			FED. ROAD DIST. NO. 1 ILLINOIS FED. AID PROJECT	