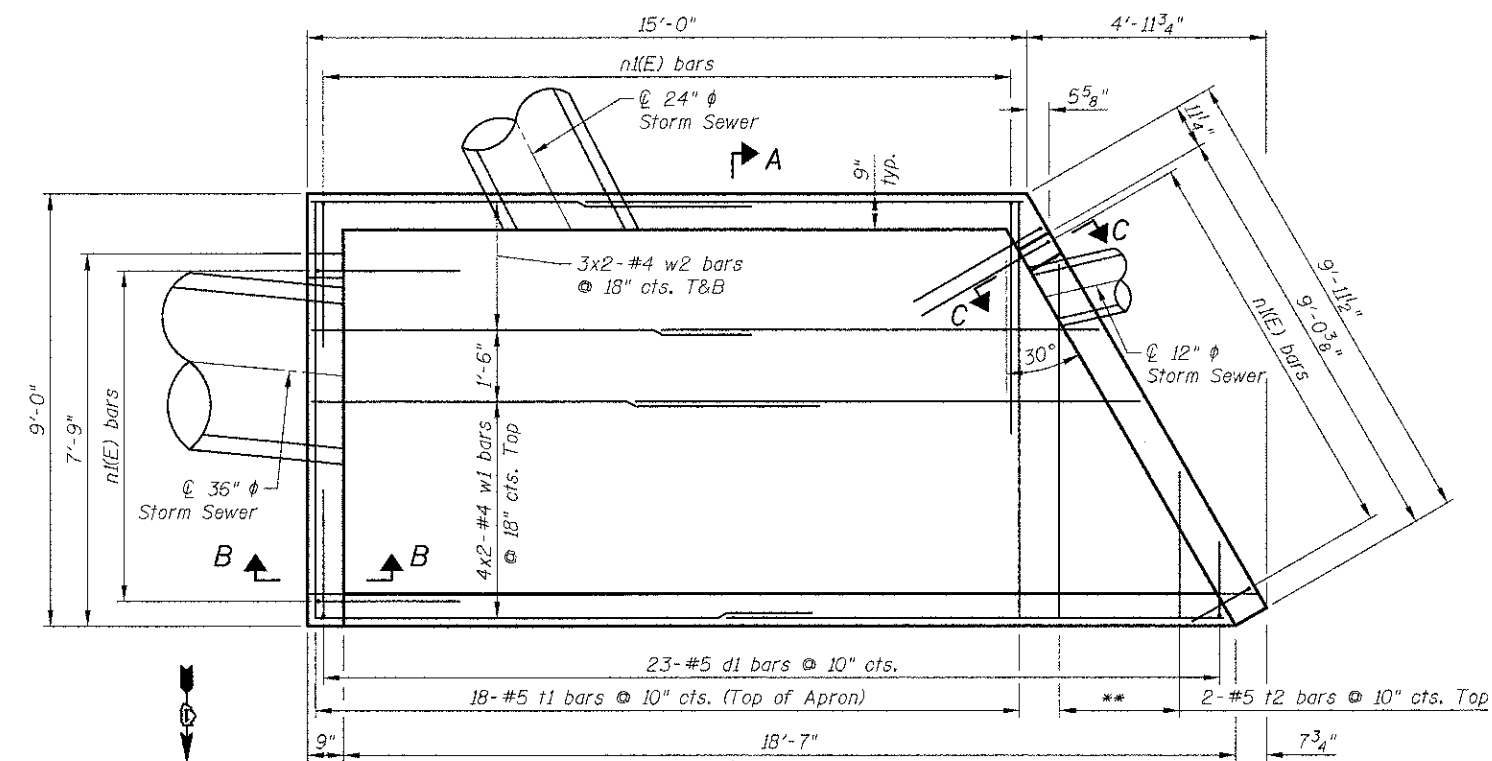
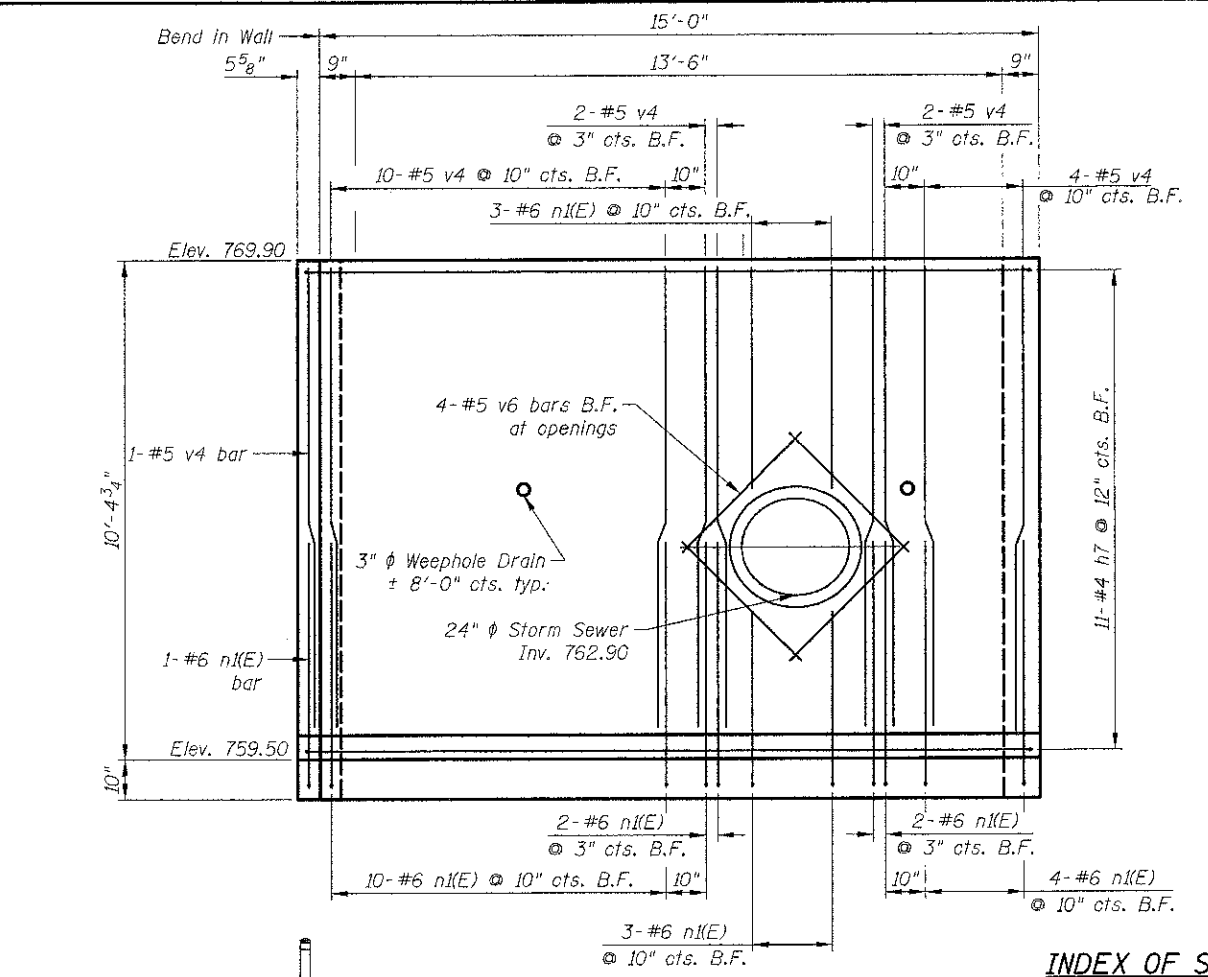


**END VIEW ELEVATION**



**FOOTING PLAN**



**SOUTH WINGWALL**  
(Looking at Back Face of Wall)  
Ornamental Railing Not Shown

Ornamental Fence  
See LCDOT Std. LC6601

**INDEX OF SHEETS**

- S1 Culvert Headwall Details I
- S2 Culvert Headwall Details II

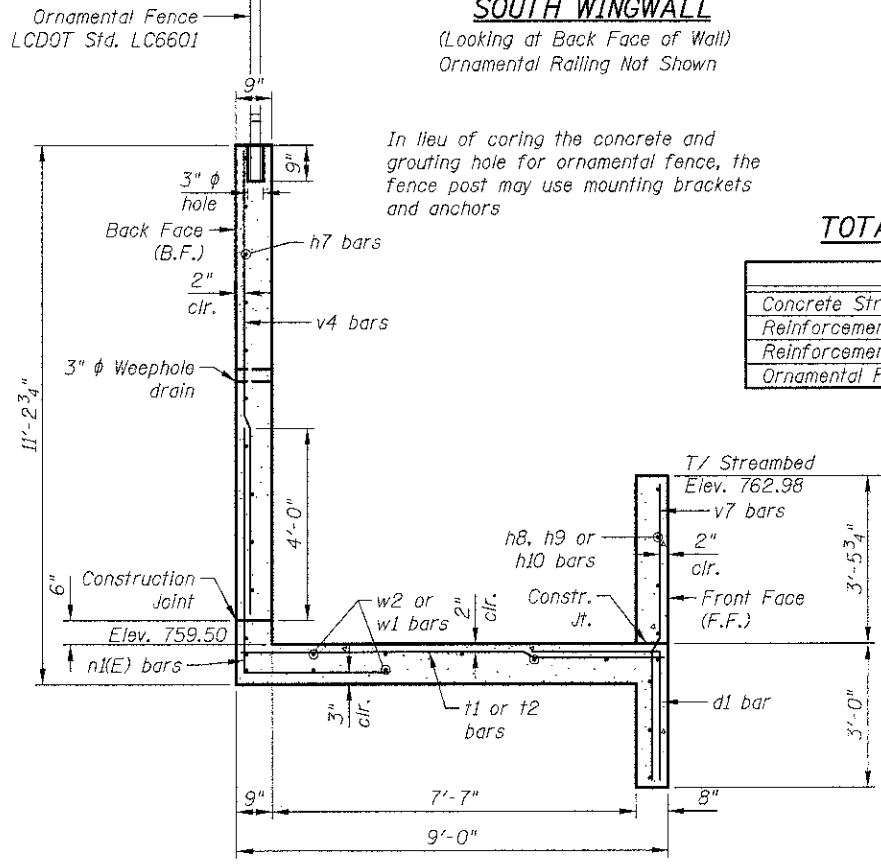
**DESIGN STRESSES**

**FIELD UNITS**

$f'_c = 3,500$  psi  
 $f_y = 60,000$  psi (Reinforcement)

**TOTAL BILL OF MATERIAL**

ITEM	UNIT	TOTAL
Concrete Structures	Cu. Yd.	16.4
Reinforcement Bars	Pound	1,380
Reinforcement Bars, Epoxy Coated	Pound	560
Ornamental Fence	Foot	32



**SECTION A-A**

In lieu of coring the concrete and grouting hole for ornamental fence, the fence post may use mounting brackets and anchors

Notes:  
See Sheet S2 for Sections B-B, C-C and D-D.  
Bars indicated thus 3x2-#4 etc. indicates 3 lines of bars with 2 lengths per line.  
\*\* See field Cutting Diagram

**MINIMUM BAR LAP**

#4 bar = 1'-9"  
#6(E) bar = 3'-10"

12/12/2012 2:36:29 PM I:\2449\cadd\sheet\14\_STR\Headwall\01\_headwall\_1.rvt