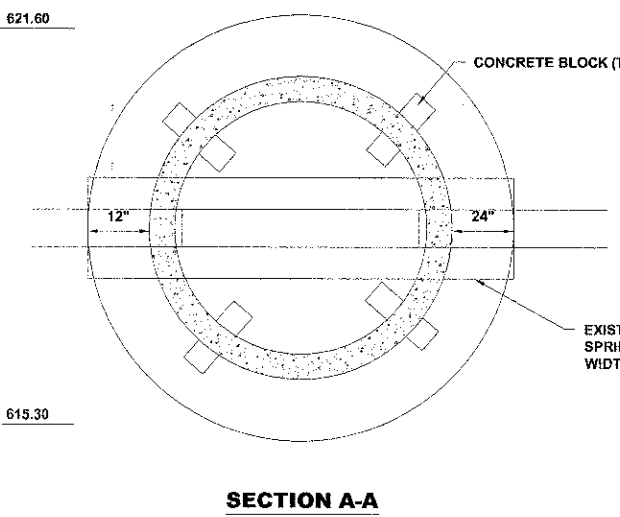


DOGHOUSE MANHOLE PROFILE



SECTION A-A

- NOTE:**
- 1.) THE BASE AND BENCH OF THE MANHOLE SHALL BE POURED INTEGRALLY. NO PRECAST BASES WILL BE ALLOWED.
 - 2.) ALL POURED IN PLACE CONCRETE MUST BE 4000 PSI NON-SHRINK MIX. THE MINIMUM DIALTER OF MANHOLE IS 60".
 - 3.) CONCRETE BONDING AGENT MUST BE APPLIED TO ALL INTERFACES OF PRECAST CONCRETE SURFACES WITH POURED IN PLACE CONCRETE.
 - 4.) A CURVED INTERNAL ARCH FORM MUST BE USED DURING COLLAR CONCRETE PULL. NO BRICK, MORTAR, OR DEBRIS IS TO BE USED IN PLACE OF CONSOLIDATED CONCRETE.
 - 5.) DEBRIS MUST NOT BE ALLOWED TO ENTER THE SEWER SYSTEM AT ANY TIME DURING CONSTRUCTION. THE STRUCTURE MUST NOT BE BACKFILLED FOR A MINIMUM OF 24 HOURS AFTER CONSTRUCTION.
 - 6.) THE MANHOLE BENCH MUST HAVE 4% SLOPE TO DRAIN TO SPRING-LINE OF EXISTING SEWER.
 - 7.) THE MANHOLE BASE MUST BE POURED ON A MINIMUM OF 8" COMPACTED AGGREGATE.
 - 8.) THE MANHOLE BASE MUST BE 8" BELOW THE INVERT OF THE EXISTING SEWER AND EXTEND AROUND BARREL A MINIMUM OF 12", BUT WILL REACH THE OUTSIDE DIAMETER OF THE EXISTING RELIEF SEWER.
 - 9.) ALL CONSTRUCTION MUST MEET APPROVAL OF MWRD REQUIREMENTS.

PROPOSED STORM SEWER CONNECTION TO EXISTING SEWER

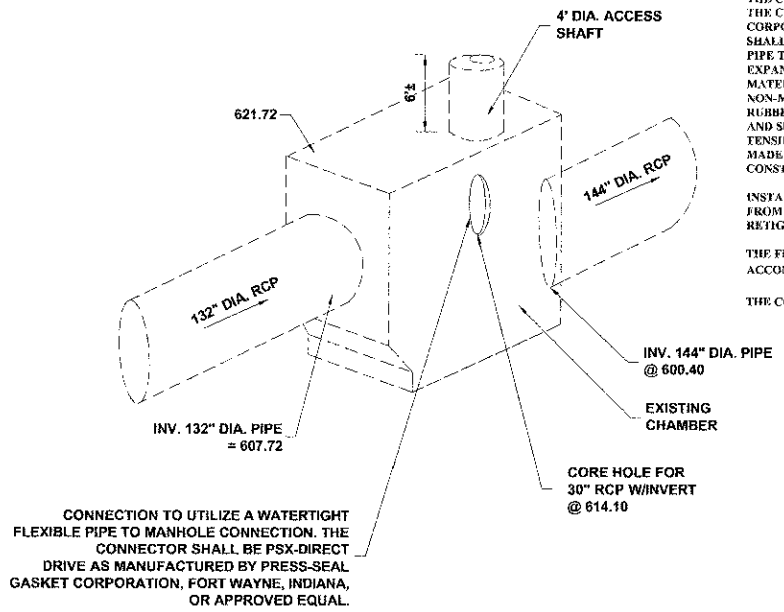
NOTE:

THE CONNECTION SHALL UTILIZE A WATERTIGHT FLEXIBLE PIPE-TO-MANHOLE CONNECTOR. THE CONNECTOR SHALL BE PSX-DIRECT DRIVE AS MANUFACTURED BY PRESS-SEAL GASKET CORPORATION, FORT WAYNE, INDIANA, OR APPROVED EQUAL. THE CONNECTOR ASSEMBLY SHALL BE THE SOLE ELEMENT RELIED ON TO ASSURE A FLEXIBLE WATERTIGHT SEAL OF THE PIPE TO THE STRUCTURE. THE CONNECTOR SHALL CONSIST OF A RUBBER GASKET, AN INTERNAL EXPANSION SLEEVE, AND ONE OR MORE EXTERNAL COMPRESSION TAKE-UP CLAMPS. APPROVED MATERIALS FOR THE CONNECTOR SHALL BE NATURAL OR SYNTHETIC RUBBER AND SERIES 300 NON-MAGNETIC STAINLESS STEEL. NO PLASTIC COMPONENTS SHALL BE PERMITTED. THE RUBBER GASKET ELEMENT SHALL BE CONSTRUCTED SOLELY OF SYNTHETIC OR NATURAL RUBBER, AND SHALL MEET/EXCEED THE REQUIREMENTS OF ASTM C 923, AND SHALL HAVE A MINIMUM TENSILE STRENGTH OF 1600 PSI. THE INTERNAL EXPANSION SLEEVE COMPONENTS SHALL BE MADE OF SERIES 300 NON-MAGNETIC STAINLESS STEEL AND SHALL UTILIZE NO WELDS IN THEIR CONSTRUCTION.

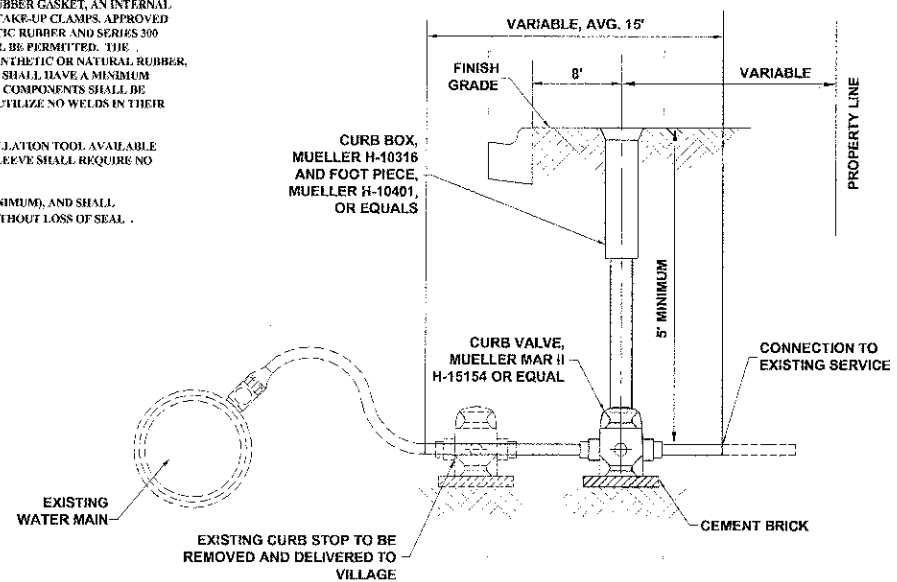
INSTALLATION SHALL BE PERFORMED USING A CALIBRATED INSTALLATION TOOL AVAILABLE FROM THE CONNECTOR MANUFACTURER. INSTALLATION OF THE SLEEVE SHALL REQUIRE NO RETIGHTENING AFTER THE INITIAL INSTALLATION.

THE FINISHED CONNECTION SHALL PROVIDE SEALING TO 13 PSI (MINIMUM), AND SHALL ACCOMMODATE DEFLECTION OF PIPE TO 7 DEGREES (MINIMUM) WITHOUT LOSS OF SEAL.

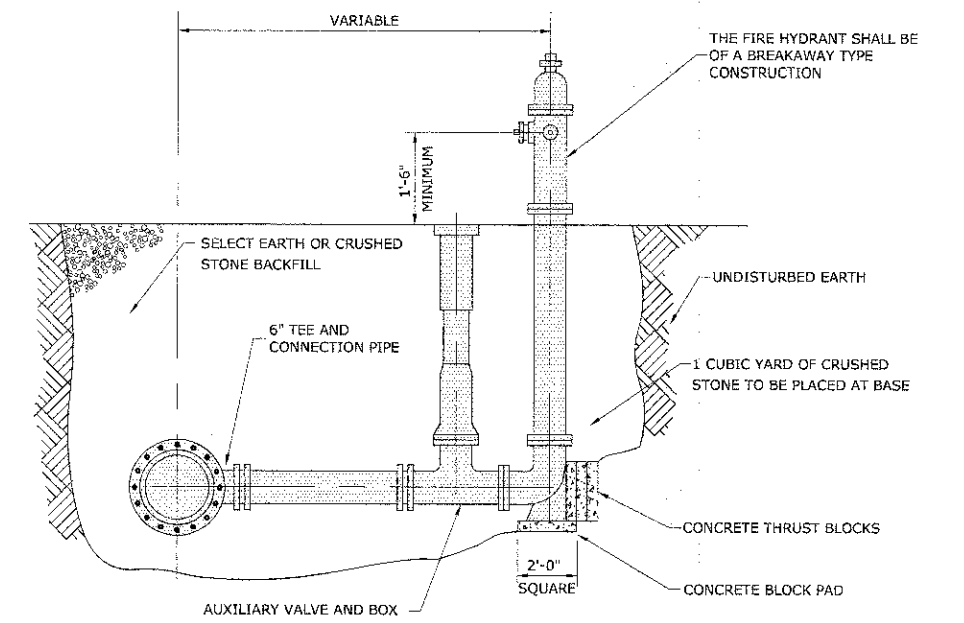
THE CONNECTION MUST SATISFY MWRD REQUIREMENTS.



PROPOSED STORM SEWER CONNECTION TO EXISTING MANHOLE



WATER SERVICE LINE RELOCATED



FIRE HYDRANT DETAIL

HANCOCK ENGINEERING

- ◆ Civil Engineers
- ◆ Municipal Consultants
- ◆ Established 1911

913 Roosevelt Road
Westchester, Illinois 60154-2799
Phone: 708/865-0300
Fax: 708/865-1112

DESIGNED -	CB/SBC	REVISED -	
DRAWN -	ECW, MK, DMM	REVISED -	
CHECKED -	MDL	REVISED -	
DATE -	12-7-12	REVISED -	

**STATE OF ILLINOIS
DEPARTMENT OF TRANSPORTATION**

DRAINAGE AND UTILITIES DETAILS

SCALE: NONE SHEET NO. 3 OF 4 SHEETS STA. TO STA.

F.A.U. RTE.	SECTION	COUNTY	TOTAL SHEETS	SHEET NO.
1260	12-00097-00-PV	COOK	56	38
FIELD BOOK NO. : X		CONTRACT NO. 63771		
FED. ROAD DIST. NO. 1		ILLINOIS FED. AID PROJECT		

E.H.E. PROJECT NO. 760-12-05201