

FOR INDEX OF SHEETS, SEE SHEET NO. 2
 FOR LIST OF HIGHWAY STANDARDS, SEE SHEET NO. 2

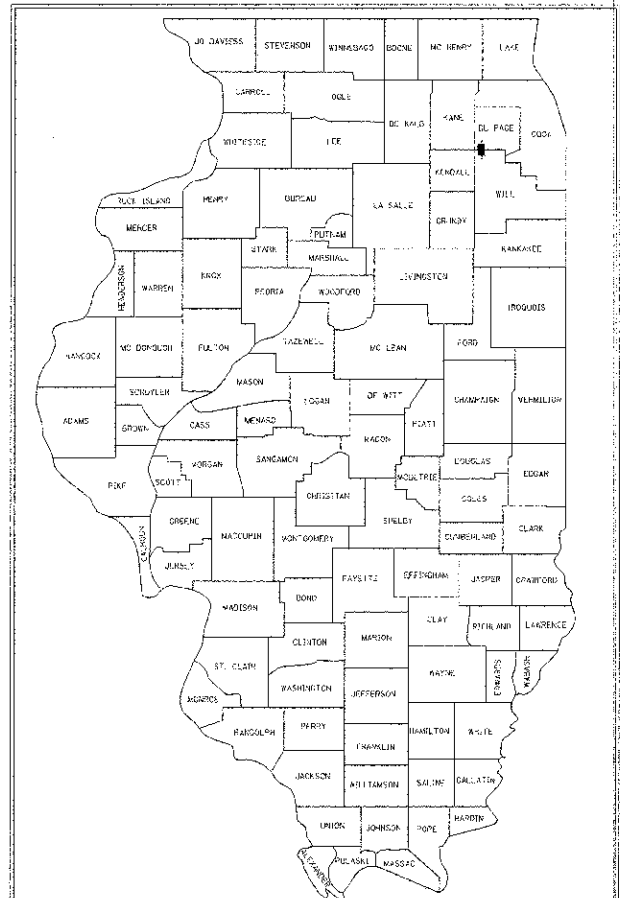
STATE OF ILLINOIS
 DEPARTMENT OF TRANSPORTATION
 DIVISION OF HIGHWAYS

PLANS FOR PROPOSED
 FEDERAL AID HIGHWAY

FAU 2531 (EOLA ROAD)
 WOLF'S CROSSING ROAD TO E. NEW YORK STREET
 TRAFFIC SIGNAL INTERCONNECT
 SECTION 11-00296-00-TL
 PROJECT NO. CMM-9003 (937)
 DUPAGE /WILL COUNTY
 JOB NO.: C-91-218-12
 CITY OF AURORA

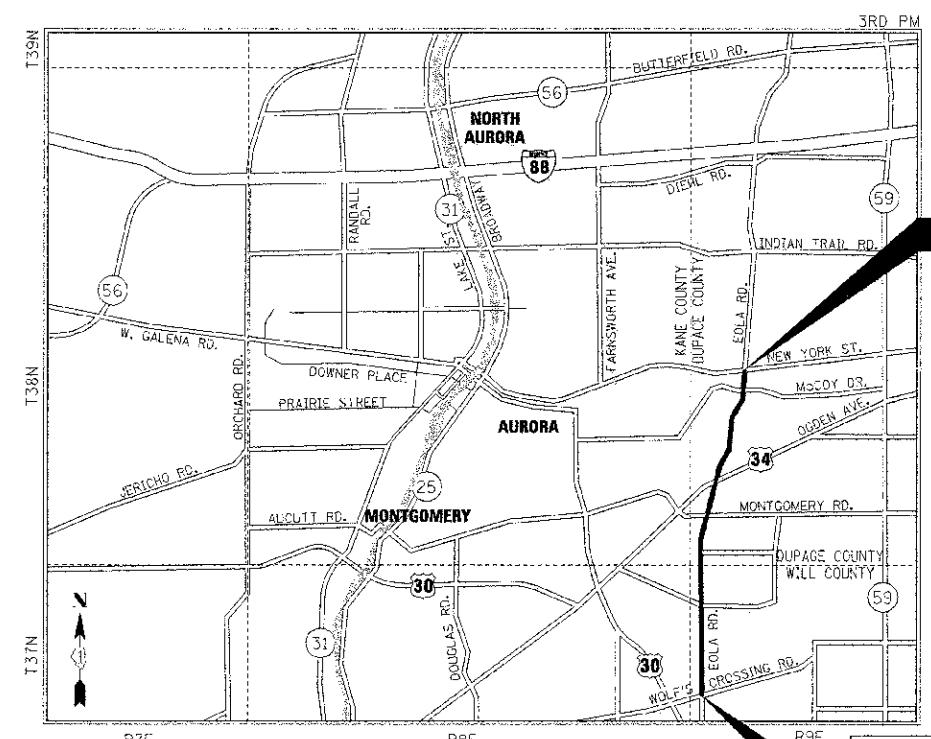
F.A.U. RTE.	SECTION	COUNTY	TOTAL SHEETS	SHEET NO.
2531	11-00296-00-TL	DUPAGE/WILL	48	

CONTRACT NO. 63786



LOCATION OF SECTION INDICATED THUS: -

THIS IMPROVEMENT IS LOCATED IN THE CITY OF AURORA



END PROJECT (E. NEW YORK STREET) STA 1240+00

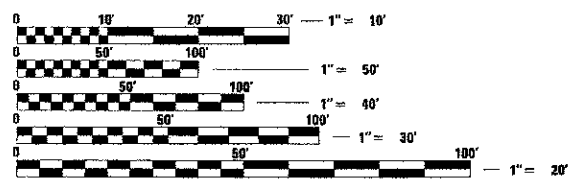
BEGIN PROJECT (WOLF'S CROSSING ROAD) STA 1005+00

LOCATION MAP
 SCALE: N.T.S

PROJECT GROSS LENGTH = 23,500.00 FEET = 4.45 MILES
 PROJECT NET LENGTH = 23,500.00 FEET = 4.45 MILES

EXISTING ADT (2008) = 33,000
 POSTED / DESIGN SPEED = 30-35 M.P.H.
 DESIGN DESIGNATION = MAJOR ARTERIAL

J.U.L.I.E.
 JOINT UTILITY LOCATING INFORMATION FOR EXCAVATION
 1-800-892-0123 (CALL 48 HOURS IN ADVANCE)



FULL SIZE PLANS HAVE BEEN PREPARED USING STANDARD ENGINEERING SCALES. REDUCED SIZED PLANS WILL NOT CONFORM TO STANDARD SCALES. IN MAKING MEASUREMENTS ON REDUCED PLANS, THE ABOVE SCALES MAY BE USED.

CONTRACT NO: 63786

STATE OF ILLINOIS
 DEPARTMENT OF TRANSPORTATION
 DIVISION OF HIGHWAYS

APPROVED December 17 2012
E. J. Della
 CITY OF AURORA, CITY TRAFFIC ENGINEER

PASSED December 31 2012
C. Holt
 DISTRICT 1 ENGINEER OF LOCAL ROADS & STREETS

RELEASING FOR BID
 BASED ON LIMITED
 REVIEW JANUARY 21 2013
J. P. [Signature]
 DEPUTY DIRECTOR OF HIGHWAYS, REGION 1 ENGINEER

PRINTED BY THE AUTHORITY
 OF THE STATE OF ILLINOIS

651 PRAIRIE POINTE, SUITE 201 | YORKVILLE, ILLINOIS 60560
 Phone: 630.553.7560 | Toll Free: 800.728.7805 | Fax: 630.553.7646 | HRGreen.com
 ILLINOIS PROFESSIONAL DESIGN FIRM #184-001322

Anthony P. Simmons
 ANTHONY P. SIMMONS, P.E.
 NO. 02-058414
 EXPIRES: 11/30/2013
 HR GREEN, INC.
 12/17/2012

DISTRICT 1 - PROGRAM AND OFFICE ENGINEER: CHARLES F. RIDDLE, P.E. (847) 705-4406, SCHAUMBURG